



# Service Bulletin

Bulletin No.: PIP6031E

Date: June, 2026

## PRELIMINARY INFORMATION

**Subject: CVT Transmission Leaks From Case Half**

Brand:	Model:	Model Year:		VIN:		Engine:	Transmission:
		from	to	from	to		
Buick	Encore GX	2022 - 2027		All	All	All	MRG
Chevrolet	Equinox	2025-2027		All	All	All	MRQ
Chevrolet	Malibu	2022 - 2026		All	All	All	MRG
Chevrolet	Trailblazer	2022 - 2027		All	All	All	MRG
GMC	Terrain	2025-2027		All	All	All	MRQ

<b>Involved Region or Country</b>	North America
<b>Condition</b>	Transmission leaks from the case half.
<b>Cause</b>	Machining Imperfection on the case.

### Correction

Some Customers may comment on a leak from the transmission.

Technicians may find a leak coming from the case halves.

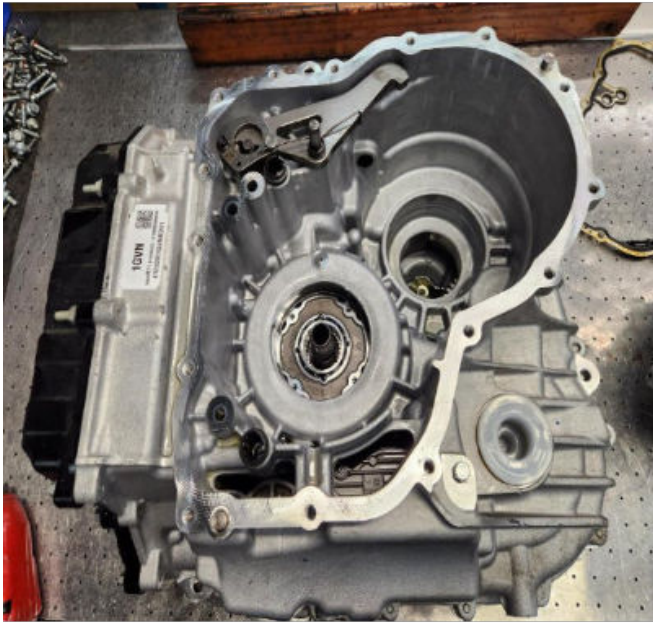
Now that tool GM-52317 is available we can separate the case and repair.

If a leak is found in this location, then follow the video in the Emerging issues 10224.07V in Center of Learning (US Dealers) or 57550.01V (Canadian Dealers) to separate the case halves.

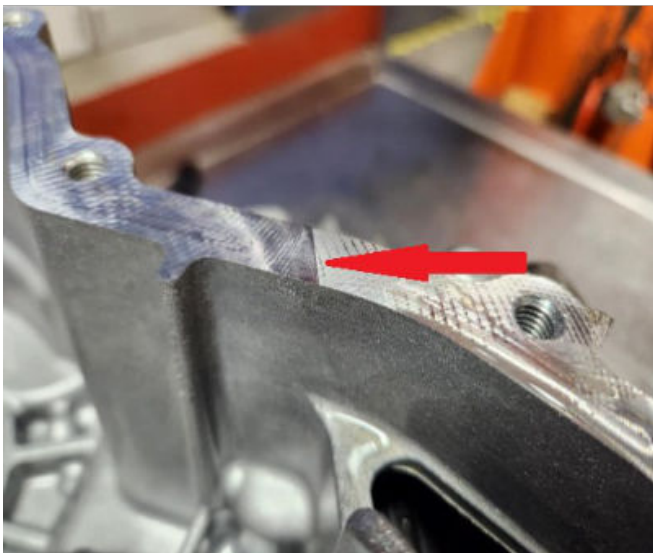
Separate the Case halves and inspect for Machining Imperfection.

Machining Imperfection as seen below can be repaired by block sanding the case with either 400 or 600 grit sandpaper then replacing the gasket.

**Note:** When sanding the case attention must be paid to prevent taking off too much material, all that needs to be done is to remove the machining damage to the case.



6750270



6782719

Once reassembled please drive the vehicle and re inspect for leaks.

## Warranty Information

For vehicles repaired under the Powertrain coverage, use the following labor operation. Reference the Applicable Warranties section of Investigate Vehicle History (IVH) for coverage information.

Labor Operation	Description	Labor Time
8481128*	Malibu repair machining imperfection by block sanding	9.5 Hr.
	Trailblazer repair machining imperfection by block sanding	8.7 Hr.
	Encore GX repair machining imperfection by block	8.7 Hr.
	Equinox repair machining imperfection by block sanding	7.9 Hr.
	Terrain repair machining imperfection by block sanding	8.1 Hr
Add time	Vehicles equipped with R1234YF	0.9 Hr.
R1234YF A/C recovery and recharge	(Vehicles with R134A 0.3 has already been included in the above	
*This is a unique Labor Operation for Bulletin use only.		

<b>Version</b>	6
<b>Modified</b>	<p>12/11/2024 - Created on.</p> <p>06/09/2025 - Updated to include COL course 57550.01V for Canadian Dealers and the 2025 GMC Terrain and Labor Operation and Models.</p> <p>07/16/2025 - Update to Warranty section.</p> <p>8/02/2025 - Updated to correct labor op table.</p> <p>12/12/2025 - Updated to correct labor time</p> <p>06/03/2025 - Updated to correct labor time and update model years</p>

