



Technical Service Bulletin

GROUP
**ELECTRIC VEHICLE
SYSTEM**

NUMBER
26-EV-004H

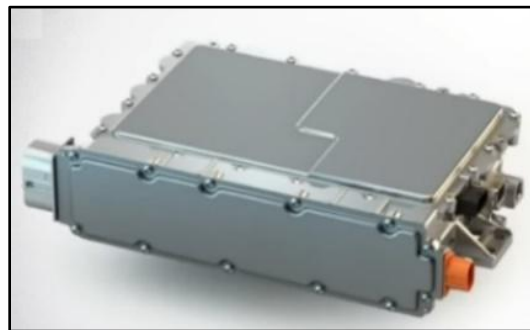
DATE
MAY 2026

MODEL(S)
SEE BELOW

SUBJECT: DTC VERIFICATION – INTEGRATED CHARGING CONTROL UNIT (ICCU) REPLACEMENT (WARRANTY EXTENSION Z14)

Description: Hyundai is extending the warranty coverage for the Integrated Charging Control Unit (ICCU) and ICCU fuse to 15 years/180,000 miles from the date of original retail delivery or date of first use (whichever occurs first) and is valid for original and subsequent owners.

Follow the flowchart in this bulletin to check for an active or stored occurrence of any Diagnostic Trouble Code (DTC) that requires replacement of the ICCU and replace the ICCU and ICCU fuse if necessary. Some vehicles may have an active DTC that requires ICCU replacement.



Applicable Vehicles:

Model Year	Model	Production Dates
2022 – 2024	IONIQ 5 (NE EV)	10/04/2021 – 11/01/2024
2024	IONIQ 5 ROBOTAXI (NER)	10/09/2023 – 10/29/2024
2023 – 2025	IONIQ 6 (CE EV)	12/14/2022 – 10/10/2024

NOTICE


To avoid any potential damage to IONIQ vehicles, IONIQ repairs can only be performed at IONIQ certified dealers.

SUBJECT: DTC VERIFICATION - INTEGRATED CHARGING CONTROL UNIT (ICCU)
REPLACEMENT (WARRANTY EXTENSION Z14)

DTC Information:

DTC	Description
P1A9096	DC/DC Converter Input Voltage Sensor Fault
P1E011C	PFC Voltage Sensor Reliability and Initial Offset Value Check
P1E0211	PFC Voltage Sensor Circuit Low
P1E1300	Inverter Charging Relay Fault
P1E1417	PFC Output Voltage Too High
P1E0C73	Input Relay Stuck Closed Check
P0D5C00	Battery Charger Hybrid/EV Battery Output Power Performance

Parts Information:

Model	Part Name	Part Number	Remarks
IONIQ 5 (NE EV)	ICCU Assy (Integrated Charging Control Unit)	36400-1XAA0AQQH	
IONIQ 5 ROBOTAXI (NER)		36400-1XMA0AQQH	
IONIQ 6 (CE EV)		36400-1XEA0AQQH	
All	Fuse – High Voltage	375F2-GI040QQH	Order High-Voltage Fuse in Conjunction with the ICCU for DTC P1A9096 ONLY
	Pink Antifreeze/ Coolant	00232-19098	3.8L (1 gallon)

NOTICE

Do **NOT** install the fuse alone without ICCU replacement. If vehicle is placed in **Ready Mode** after replacing only the fuse and not the ICCU, there is a possibility of DTC **P1B77**, Battery PRA damage occurring. Refer to the shop manual to determine if fuse replacement is required for the specific DTC.

SUBJECT: DTC VERIFICATION - INTEGRATED CHARGING CONTROL UNIT (ICCU)
REPLACEMENT (WARRANTY EXTENSION Z14)

SST Information:

Tool Name	Tool Number	Figure	Ordering Information
VCI 3	G0VHNNN06		Website: https://hyundaessentialtools.com/ Email: Hyundaitools@snapon.com Phone: 1-855-763-9199 Hours: 7 AM – 7 PM CST
VCI 2	G1XDDMN001		

NOTE: VCI 2 can **NO** longer be ordered but can be used for the updates in this TSB.

Warranty Information:

Model	Op. Code	Operation	Op. Time	Causal Part	Nature Code	Cause Code
IONIQ 5 (NE EV)	60D097R0	DTC Check (LDC), and ICCU and Fuse Replacement (P1A9096)	2.1 M/H	36400-1XAA0 (IONIQ 5)	W11	ZZ3
IONIQ 5 ROBOTAXI (NER)	60D097R1	DTC Check (OBC) and ICCU Replacement (P1E011C, P1E0211, P1E1300, P1E1417, P1E0C73, P0D5C00)	2.0 M/H	36400-1XMA0 (IONIQ 5 ROBOTAXI)		
IONIQ 6 (CE EV)	60D097R2	DTC Check (Others) and ICCU Replacement	2.0 M/H	36400-1XEA0 (IONIQ 6)		

NOTE 1: If the affected parts are within the warranty period of 15 years/180,000 miles, then submit as campaign claim type. Please note that any vehicles under 15 years/180,000 miles are covered by this TSB, even if vehicle is within High Voltage Warranty of 10 years/120,000 miles.

NOTE 2: This TSB includes repair justification in the form of automatically uploaded DTC(s) via GDS e-report at the time of diagnosis. To ensure adherence to the Digital Documentation Policy before claim submission, DTC history can be reviewed via the e-Report function within the GDS.

NOTE 3: The incident parts are subject to callback through the normal Warranty Technical Center (WTC) parts return process. **Claim is subject to debit if the part is not returned.**

NOTE 4: If any part(s) not subject to this TSB are found in need of replacement while performing the repair procedure, and the affected part(s) are still under warranty, the dealer may submit a separate claim using the same repair order. If the part(s) not subject to this TSB are out of warranty coverage, the dealer has the option to submit a PA Request for goodwill consideration on a case-by-case basis.

Service Procedure:

DIGITAL DOCUMENTATION



This TSB includes repair justification in the form of automatically uploaded DTC(s) via GDS e-report at the time of diagnosis. To ensure adherence to the Digital Documentation Policy before claim submission, DTC history can be reviewed via the e-Report function within the GDS.

NOTICE

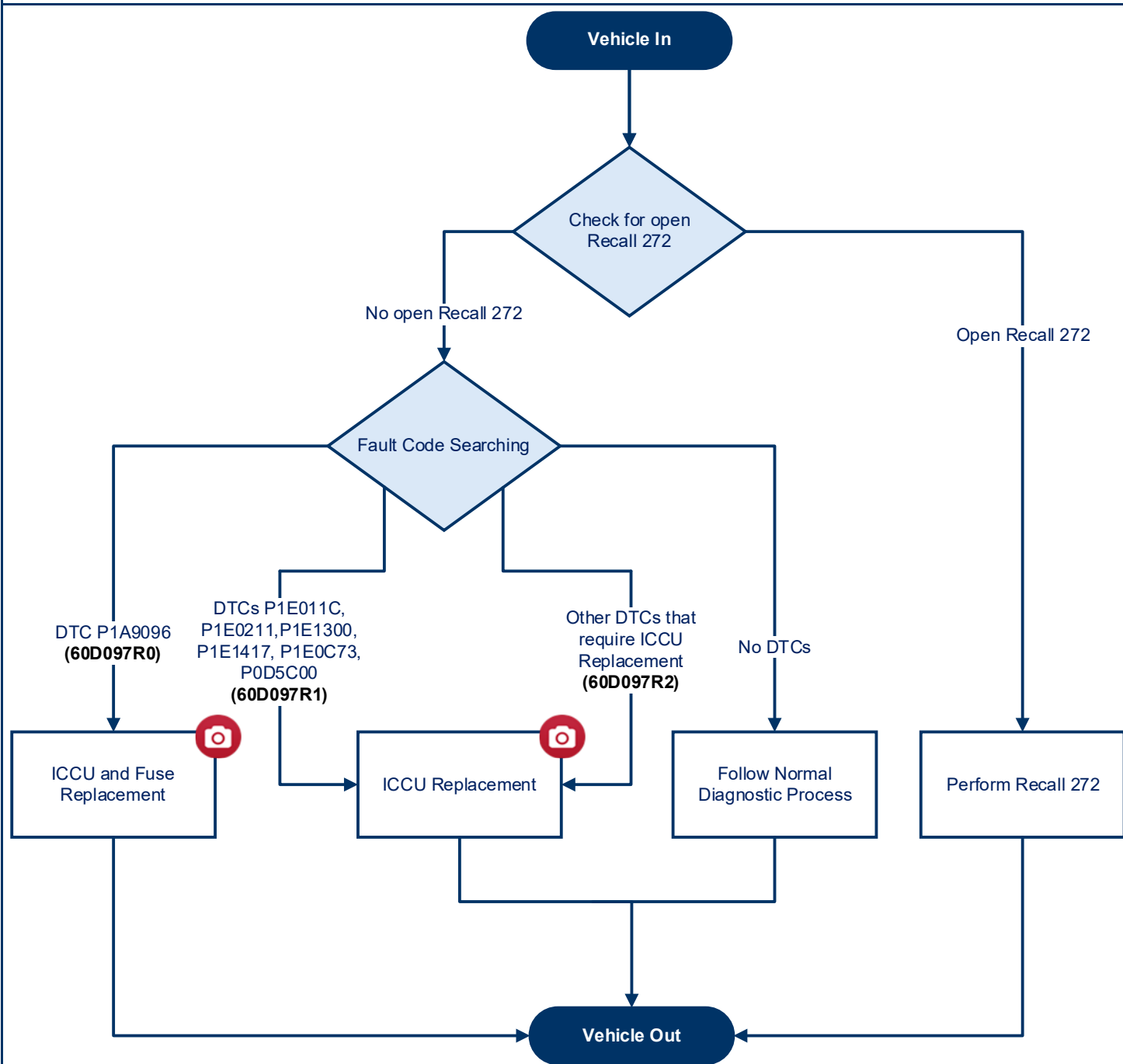
Applying the recommended torque to all fasteners is essential to reduce potential issues from occurring after the service procedure.

⚠ WARNING

Be sure to read the **Safety and Precautions** and **High Voltage Shut-off Procedures** sections of the shop manual before performing any work related to high-voltage systems. Failure to do so may result in serious electrical injuries.

Be sure to follow your country's/region's regulations when performing work on or around high voltage components.

Flowchart



1) If there is a LDC (Low-voltage DC-DC Converter) related DTC (**P1A9096**), replace the ICCU **AND** ICCU fuse following the shop manual and proceed with the claim using the warranty extension OP code (**60D097R0**).

2) If there are OBC (On Board Charger) related DTCs (**P1E011C, P1E0211, P1E1300, P1E1417, P1E0C73, POD5C00**), replace the ICCU **ONLY** following the shop manual and proceed with the claim using the warranty extension OP code (**60D097R1**).

3) If there are other DTCs that require ICCU replacement, replace the ICCU **ONLY** following the shop manual and proceed with the claim using the warranty extension OP code (**60D097R2**).

SUBJECT: DTC VERIFICATION - INTEGRATED CHARGING CONTROL UNIT (ICCU)
REPLACEMENT (WARRANTY EXTENSION Z14)

1. Confirm that Recall 272 has already been performed on the vehicle:
 - If Recall 272 has **NOT** been performed, refer to **TSB #26-01-025H** to perform the recall. This service procedure is now complete.
 - If Recall 272 has been performed, proceed to **step 2**.
2. Use the GDS to perform **Fault Code Searching** for any DTC that requires ICCU replacement:
 - If the DTC does **NOT** require ICCU replacement, or **NO** DTC is stored, then proceed with the normal diagnostic process. This service procedure is now complete.
 - If the DTC requires ICCU replacement, proceed to **step 3**.

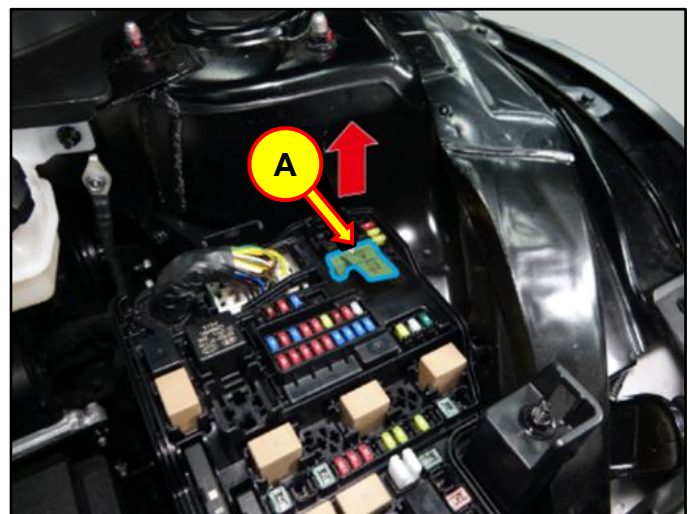
i **Information**

If DTC **P1A9096** is stored, it is necessary to replace the ICCU fuse **after** replacing the ICCU.

3. Shut **OFF** the high-voltage circuit (A) by referring to the shop manual:
 - **Battery Control System >High Voltage Shut-off Procedures**

! CAUTION

Wait for more than **5 minutes** so that the capacitor in the high voltage system will be fully discharged.



4. Remove the ICCU by referring to the shop manual:
 - **Battery Control System > High Voltage Charging System > Integrated Charge Control Unit (ICCU) > Removal**
5. Install the new ICCU in the reverse order of the removal process.
6. If DTC **P1A9096** was stored, replace the ICCU fuse by referring to the shop manual:
 - **Battery Control System > High Voltage Charging System > Integrated Charge Control Unit (ICCU) > Removal**
7. Confirm the proper operation of the vehicle.
8. The service procedure is now complete.