

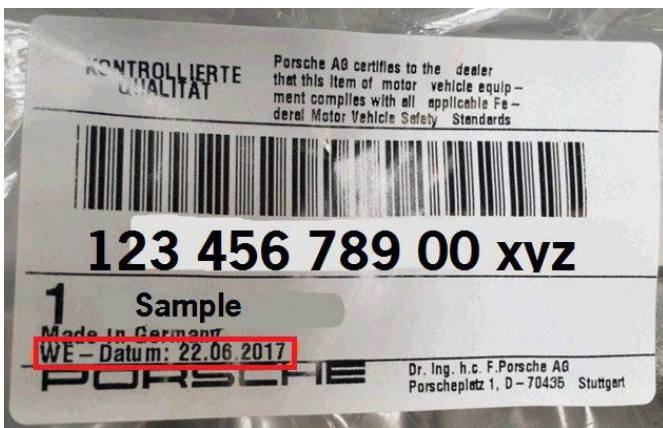
Parts Withdrawal - Various Parts

Replaces all previous bulletin bearing this number.

Attention: Porsche Parts Managers/Parts Personnel

Porsche Cars North America requests return of the following part(s) to PCNA if in stock at your Porsche Center:

| Part Number | Description | Instructions |
|-------------|----------------------------|--|
| 9J1827447B | lock | All parts before WE-Date 11.02.2026 |
| 95B201060AA | Fuel tank with attachments | All parts with WE-Dates 26.01.2026, 06.03.2026 and 24.03.2026 (DD/MM/YY) |
| PAA971221B | Module connector | All parts without heat-shrink tubing, see example picture |



To avoid restocking charges and receive full credit, follow these steps:

- Please enter a return in PPL by **Tuesday, May 26, 2026**.
- Please use **GR13D785** as a purchase order number.
- Parts returned to PCNA without a return delivery note will be sent back to the Porsche Center at Porsche Center's expense.
- Return requests received after the specified return date **will not be processed** and the parts will not be accepted for return. Parts will be coded non-returnable from that date on.
- These parts must be physically returned by close of business day on **Friday, May 29, 2026**, to your facing PDC.

Thank you for your cooperation in this matter.

Porsche Cars North America