

**E3 Cayenne Auxiliary Hydraulic Pump for Transmission Oil**

**Vehicles Affected**

Models	Model Year	Model Type	VIN Range	Vehicle-Specific Equipment
Cayenne	As of 2019	9YA, 9YB	N/A	N/A

**Revision History**

Revision	Release Date	Changes
0	12/08/2023	<ul style="list-style-type: none"> <li>▪ Original document</li> </ul>
1	06/24/2025	<ul style="list-style-type: none"> <li>▪ Part ID correction in Warranty section</li> </ul>
2	05/12/2026	<ul style="list-style-type: none"> <li>▪ Update to Model Year</li> <li>▪ Update to Technical Background</li> </ul>

**Condition**

The customer complains of a check engine light or an engine control fault indicator in the instrument cluster.

**Technical Background**

The workshop finds the fault code **POC2A00**, **POC2900**, or **U028700** stored in the transmission electronics control unit.

The faults may be caused by an internal oil leak in the auxiliary hydraulic pump for transmission oil.

**Service Information**

If the transmission electronics control unit contains these fault codes:

1. Create a VAL to document the fault
2. Order a new auxiliary transmission oil pump (PAB321281A)

3. Ensure that the supplier part number is correct upon arrival. The supplier part number should be **0501.341.288**.  
=> check the supplier part number stamped on the part

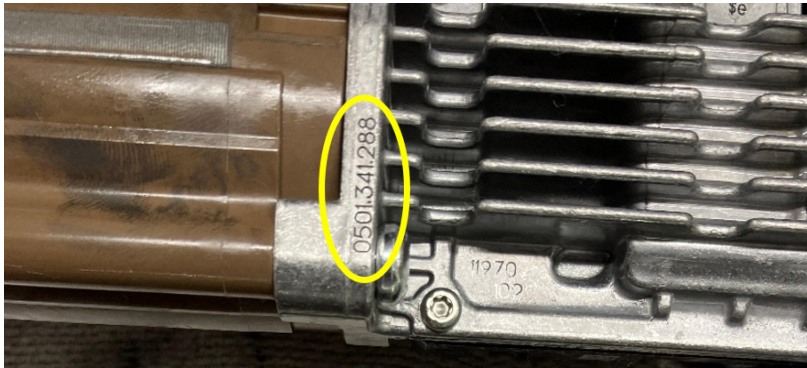


Figure 1

4. Replace the auxiliary transmission oil pump per *WM 385819 Removing and installing transmission-oil pump*.

## Warranty

As always, document the repair completely in PCSS.

For this repair, code the "cause" as follows:

Cause location: 38580 Transmission Oil Pump  
Cause symptom: 1611 No Function

Use the following labor operations:

**03350050** Fault memory reading out  
**03350053** Create VAL  
**38581950** Transmission oil pump remove and install

Additional labor operations may be claimed **only as needed**.

## Search Items

E3, E3 Transmission Oil Pump, Transmission Oil Pump, ATF Pump, Transmission, Cayenne

**Important Notice:** Technical Bulletins issued by Porsche Cars North America, Inc. are intended only for use by professional automotive technicians who have attended Porsche service training courses. They are written to inform those technicians of conditions that may occur on some Porsche vehicles, or to provide information that could assist in the proper servicing of a vehicle. Porsche special tools may be necessary in order to perform certain operations identified in these bulletins. Use of tools and procedures other than those Porsche recommends in these bulletins may be detrimental to the safe operation of your vehicle, and may endanger the people working on it. Properly trained Porsche technicians have the equipment, tools, safety instructions, and know-how to do the job properly and safely. Part numbers listed in these bulletins are for reference only. The work procedures updated electronically in the Porsche PIWIS diagnostic and testing device take precedence and, in the event of a discrepancy, the work procedures in the PIWIS Tester are the ones that must be followed.