



S-Series™

2.0 Battery Disconnect Switch

Date: May 13, 2026
Bulletin Name: FDM-SVC-045
Model: Oshkosh S-Series 2.0
Units Affected: SN 788727 - 814085

Purpose

This bulletin provides instructions to install the latest battery disconnect switch on S-Series 2.0 vehicles in serial number range 788727 - 814085.

Notice

- Read and understand this bulletin in its entirety before performing this procedure.
• All procedures outlined in the bulletin must be performed by skilled service personnel. Refer to the product service manual for descriptions of maintenance procedures.

SAFETY NOTICE
Perform your company's Lockout/Tagout procedure. If your company does not have a Lockout/Tagout procedure, follow OSHA 1910.147 and 1910.146 Confined Space as appropriate.

SAFETY NOTICE
Use appropriate Personal Protective Equipment (PPE) as required by your company.

Tools and Equipment Required

Customer to supply:

- Hand tools
• Torque wrench (foot pounds & inch pounds)

Parts Required

Table with 4 columns: Item, Part Number, Description, Qty.
Row 1: 1, A000F030, SEALANT, NOVAGARD 200, BK, FL-RTV, A/R
Row 2: 2, A000W209, SWITCH, BTDSC, SPST, 1
Row 3: 3, A000W262, BRKT, BTDSC, MTG, SVC, 1

Procedure

Lockout/Tagout

1. Place unit on a flat surface, engage parking brake, chock truck tires, and perform your company's Lockout/Tagout procedure. If your company does not have a Lockout/Tagout procedure, follow OSHA 1910.147 and 1910.146 Confined Space as appropriate.
2. The vehicle's BATTERY DISCONNECT switch is located on the left-hand side of the battery box. Use the battery disconnect switch when performing any maintenance so the vehicle cannot accidentally be started.
a. Turn the battery disconnect switch (Figure A, Item 1) counterclockwise so the hole on the switch aligns with the hole in the bracket (Figure A, Item 2).
b. Install the safety lockout device ring (Figure B, Item 1) through the holes on the battery disconnect switch and the bracket.

c. Install a padlock (Figure B, Item 2) onto the safety lockout device ring, lock it, and put the key in your pocket. If more than one person is working on the vehicle, each person must install his or her own padlock.

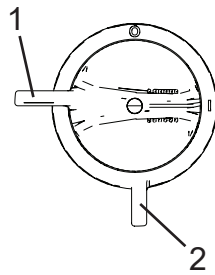


Figure A

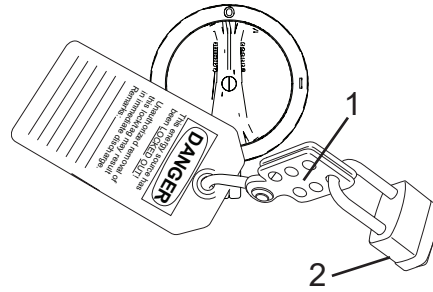


Figure B

Battery Disconnect Switch Removal

3. Release hood hatch latches and open hatch.
4. Remove battery box cover by squeezing cover hinge handles inward and up to separate hinges. See Figure 1. Set cover aside.

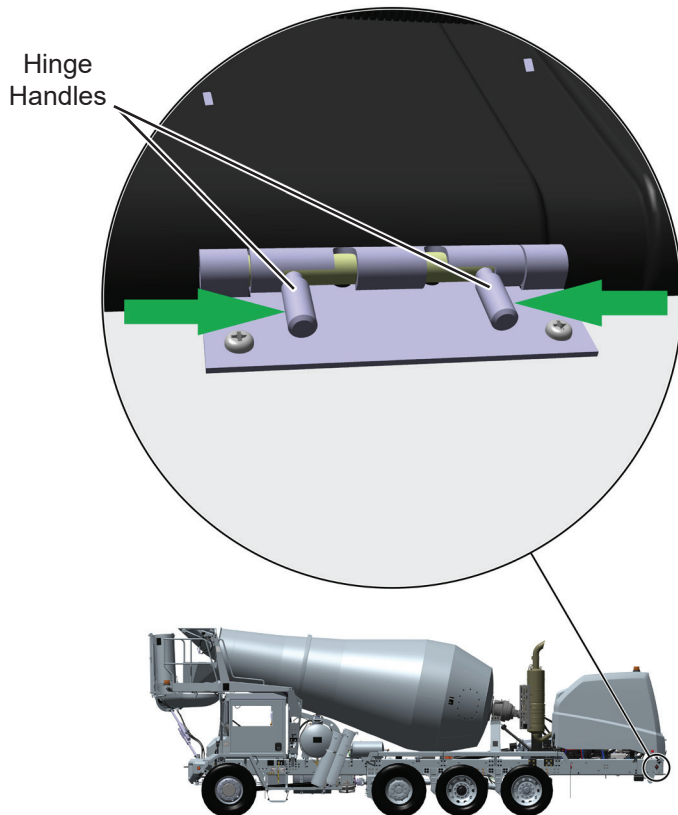


Figure 1. Battery Box Cover Hinge

5. Loosen and remove the three nuts securing negative jumper to the batteries. See Figure 2.
6. Secure the negative jumper out of way.
7. Loosen and remove the three nuts securing positive jumper to the batteries. See Figure 2.
8. Secure the positive jumper out of way.
9. Loosen and remove nuts securing battery hold-down bracket. See Figure 2. Save nuts for reinstallation of hold-down bracket.
10. Remove hold-down bracket from batteries. See Figure 2. Save hold-down bracket for reinstallation.

11. Remove left side battery from battery box. Set battery aside.

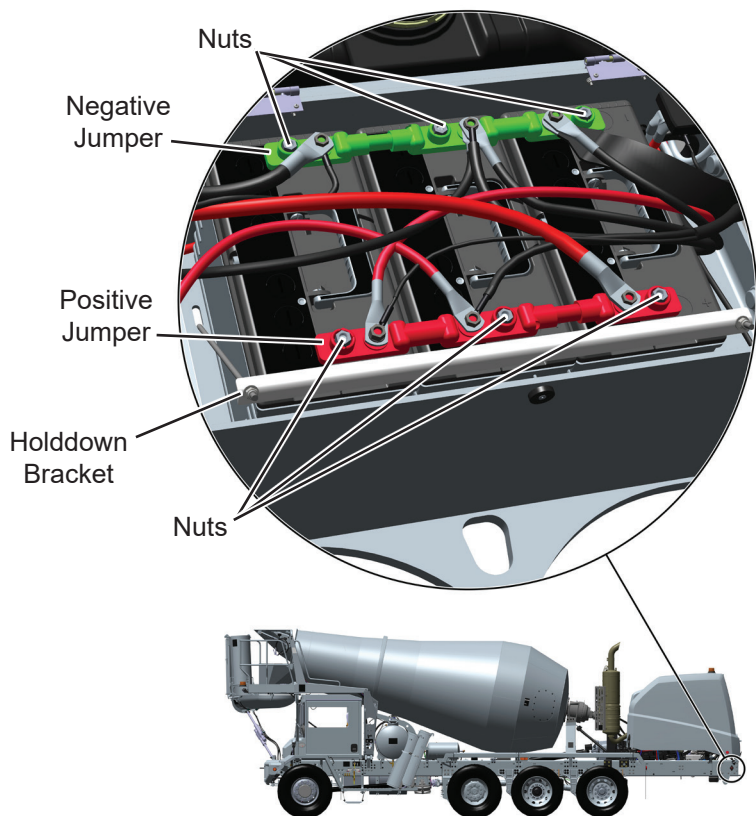


Figure 2. Battery Box

12. Loosen and remove nut securing the single positive cable to battery disconnect switch. See Figure 3. Nut will not be reused.

13. Loosen and remove nut securing the three fuse connectors to the battery disconnect switch. See Figure 3. Nut will not be reused.

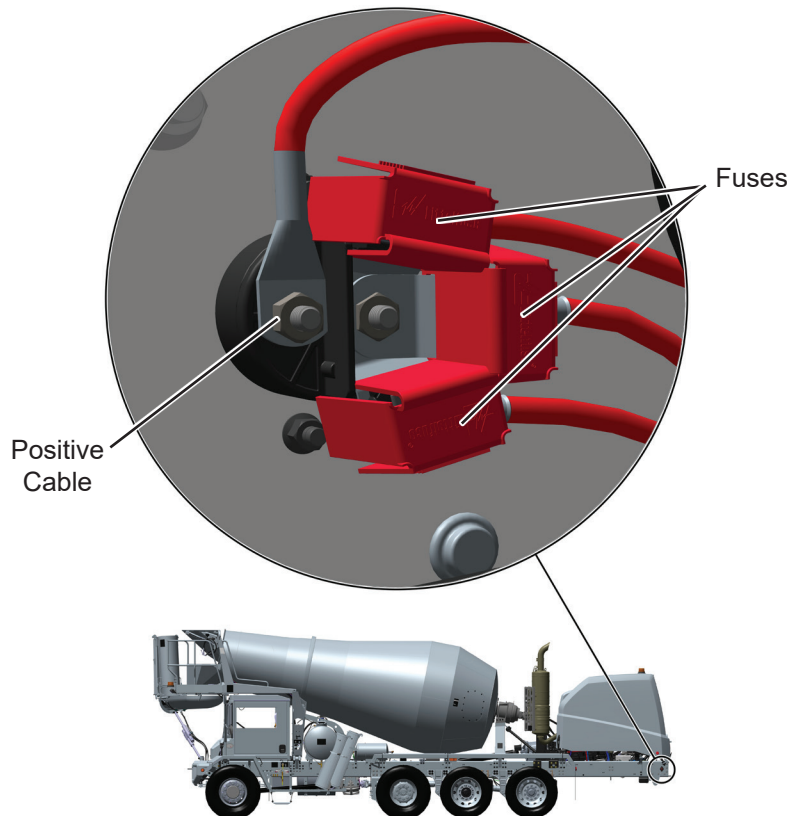


Figure 3. Disconnect Switch Connections

14. Loosen and remove the 0.31-18 x 1.25 inch screws and lock nuts securing battery disconnect switch to frame rail. See Figure 4. Save mounting hardware for installation of new battery disconnect switch.

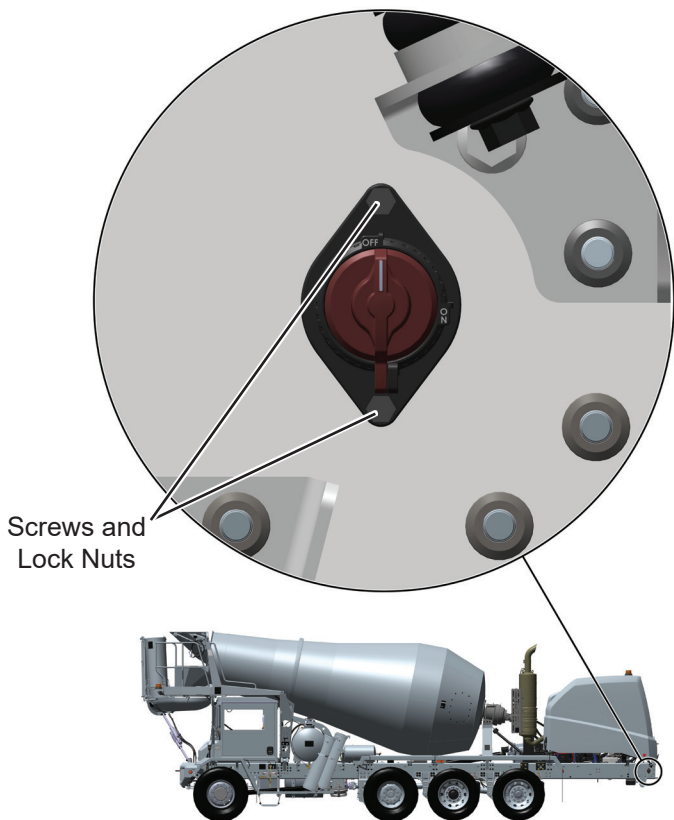


Figure 4. Battery Disconnect Switch Mounting Hardware

15. Remove battery disconnect switch from frame rail.
16. Remove padlock from battery disconnect switch installed during lockout/tagout procedure. Battery disconnect switch will not be reused.

Battery Disconnect Switch Installation

17. Remove plug, screw, knob, bezel, nut and washer from battery disconnect assembly (A000W209). See Figure 5.

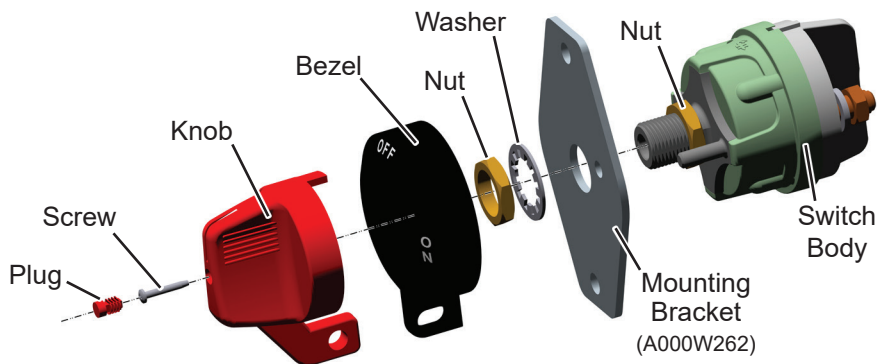


Figure 5. Battery Disconnect Switch Assembly

18. Secure mounting bracket (A000W262) to outside of frame rail with mounting hardware removed in Step 14. See Figure 6. Final tighten mounting hardware to 18 ft. lbs.
19. Install switch body from inside battery box and into mounting bracket. Make sure to align the anti-rotation stud on switch body with hole in mounting bracket. See Figure 6.
20. Install washer and nut on switch body. See Figure 6. Final tighten nut to 18 ft. lbs.
21. Install bezel and knob on switch body. See Figure 6.
22. Install screw in end of knob. See Figure 6. Final tighten screw to 5-9 in. lbs.
23. Install plug in end of knob. See Figure 6.

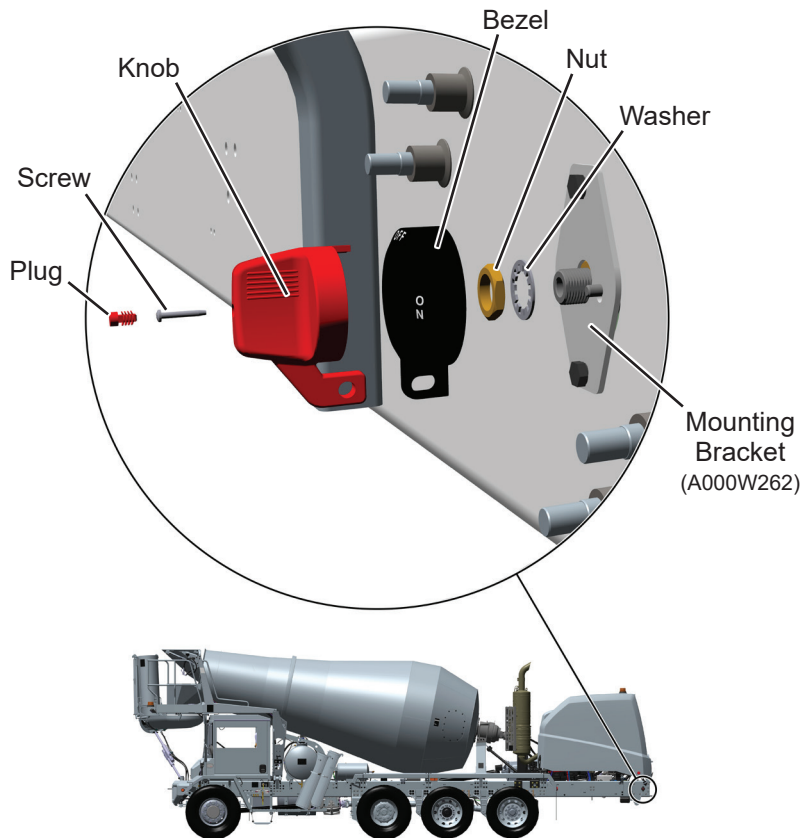


Figure 6. Battery Disconnect Switch Installation

24. Reinstall lockout/tagout padlock on battery disconnect switch.

25. Loosen and remove the two nuts from the battery disconnect switch body studs.
26. Reinstall the three fuse cable terminals to the forward body stud in the order shown in Figure 7. Reinstall one nut removed in Step 25 and final tighten to 70-90 in. lbs.
27. Reinstall the single positive cable to the rear body stud and reinstall second nut removed in Step 25. Final tighten to 70-90 in. lbs.
28. Apply a coating of RTV sealant (A000F030) to connections on body stud terminals.

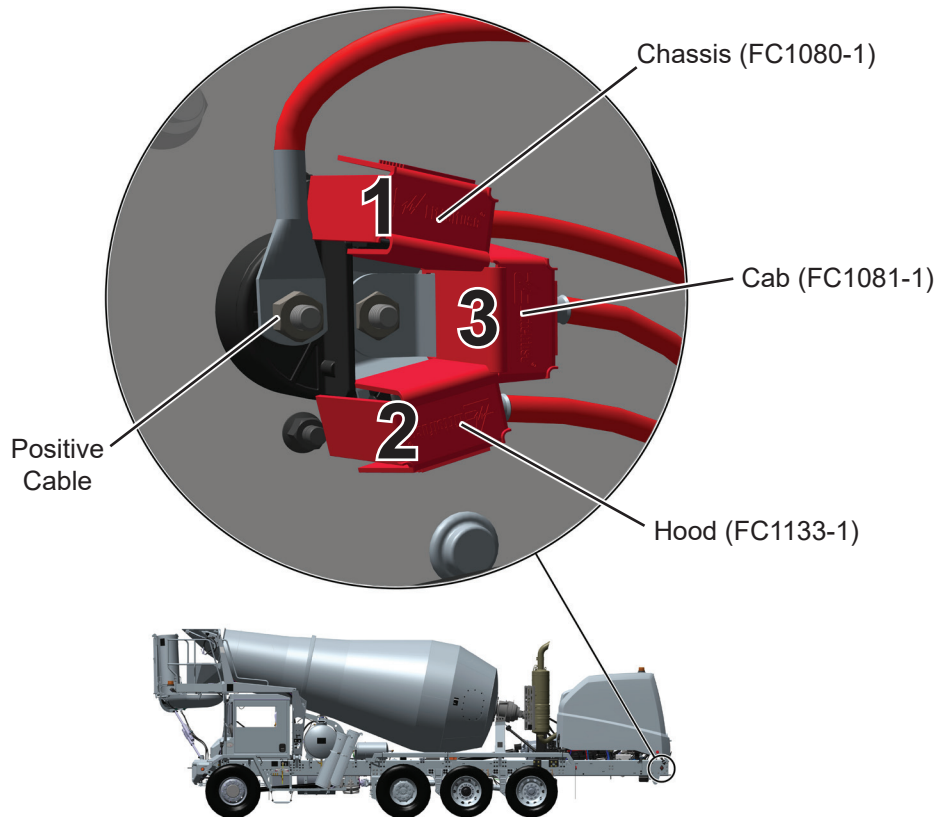


Figure 7. Battery Disconnect Switch Connections

29. Reinstall left battery removed in Step 11.
30. Reinstall battery hold-down and nuts removed in Steps 9 and 10. Final tighten nuts to 65 in. lbs.
31. Reinstall positive jumper to batteries with three nuts removed in Step 7. Final tighten nuts to 20 ft. lbs.
32. Reinstall negative jumper to batteries with three nuts removed in Step 5. Final tighten nuts to 20 ft. lbs.
33. Reinstall battery box cover.
34. Close and secure hood hatch.
35. Remove lockout/tagout and tire chocks.

Continuous Improvement:

The change included in this document is part of the Oshkosh® S-Series™ Continuous Improvement Process.

Oshkosh S-Series' quality policy is providing customer satisfaction through innovative products, dedicated service, and a constant focus on continuous improvement.



(888) 686-7278

www.streetsmartparts.com