

Technical Service Bulletin

Transaction No.: **2077475/2**

37 Transmission: gearbox fault warning light on - event memory entry
P0174A00/P174E00

Release date: May 8, 2026

Condition

Model(s)	Year(s)	VIN Range	Vehicle Specific Equipment
A3	2017 – 2020 2022 – 2026	All	With PR Code: 0IJ
A3 Cabriolet	2017 – 2019		
S3	2018 – 2020 2022 – 2026		
TT, TTS, and TT Roadster	2019 – 2023		
Q3	2026		

REVISION HISTORY		
Revision	Date	Purpose
2	-	Revised header (Added MY) Revised <i>Condition</i> (Added model table) Revised <i>Warranty</i> (Added disclaimer, footnote)
1	04/02/2025	Initial publication

Customer states:

- The warning lamp for a ‘transmission fault’ lights up in the instrument cluster.

Workshop findings:

- The customer statement can be reproduced.
- There are no issues with the gear-change characteristics of the gearbox.

At least one of the following DTCs and symptom code(s) is/are logged (passive/sporadic) in *the Transmission Electronics -J217-*, (address word 0002):

- **DTC P174A00** – Valve 3 in partial transmission 1 electrical malfunction

- Symptom: 10739
- Frequency counter in the “Standard Ambient Conditions” is at least 2 (or more – see figure 1)

or

- **DTC P174E00** – Valve 3 in partial transmission 2 electrical malfunction
 - Symptom: 10740
 - Frequency counter in the “Standard Ambient Conditions” is at least 2 (or more – see figure 1)

DTC memory entry

Number:

Error type 2:

Symptom:

Status:

— Standard ambient conditions

Date:

Time:

Mileage (DTC):

Priority:

Frequency counter:

Elimination counter / driving cycle:

Figure 1. Example of frequency counter under Standard Ambient Conditions.

NOTICE

It is imperative to observe the symptom number and the frequency counter in the standard ambient conditions. This TSB only applies if the symptom number stated previously and the frequency counter with at least 2 are stored on the event memory entry.

NOTICE

This TSB does not apply if the event memory entries P174A00 or P174E00 have other symptom numbers than 10739 or 10740 and the frequency counter in the standard ambient conditions is 1. In this case, you must work through the event memory entry using Guided Fault Finding. Please note however, that in this case, the costs of repairing the vehicle cannot be invoiced based upon this TSB.

Technical Background

Component-related issue in the gearbox mechatronic unit.

Production Solution

Not applicable.

Service

Read/compare DTCs in the transmission control unit and (if necessary) replace the mechatronic unit contact plate.

NOTICE

Special tools, test equipment and auxiliary items required:

- ESD workplace -VAS 6613-

CAUTION

Electrostatic charge can irreparably damage electrical components in the mechatronic unit!

- Touch a suitable earthed object (ESD workplace -VAS 6613-) before working on electrical components of mechatronic unit.
- Do not touch the contacts or electronic components directly.

CAUTION

Hair or dirt particles can cause functional restrictions to the mechatronic unit or cause it to fail.

- You must ensure the highest levels of cleanliness for all work on the mechatronic unit.
- Ensure no hair or dirt particles enter the system.

- Read the event memory entry for the transmission control unit (diagnostic address 0002) using Guided Fault Finding. Compare event memory entries (P174A00 or P174E00, symptom 10739 or 10740 and frequency counter in standard ambient conditions is at least 2).
- If the previously specified event memory entries apply exactly (P174A00 or P174E00 with symptom 10739 or 10740 and frequency counter at least 2 in the standard ambient conditions), proceed as follows.

NOTICE

Due to the rules for cleanliness, assembly work should only be performed after you have received all required genuine parts, and in one complete work sequence.

- Unscrew oil drain plug on mechatronic unit (see figure 2, black arrow) according to the Workshop Manual.
 - Drain oil.

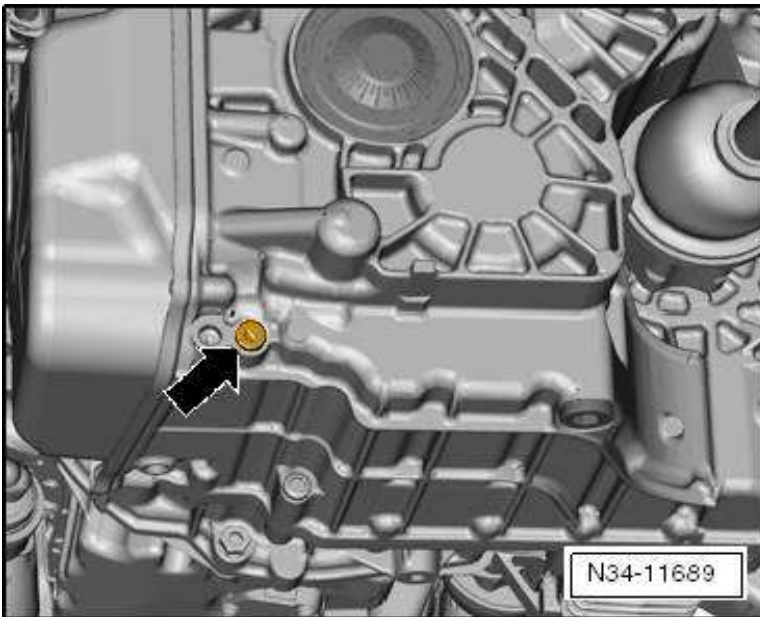


Figure 2. Mechatronic unit oil drain plug.

- Remove mechatronic unit cover according to Workshop Manual.
- Unscrew securing bolts for the contact plate (see figure 3, numbers 1-12).

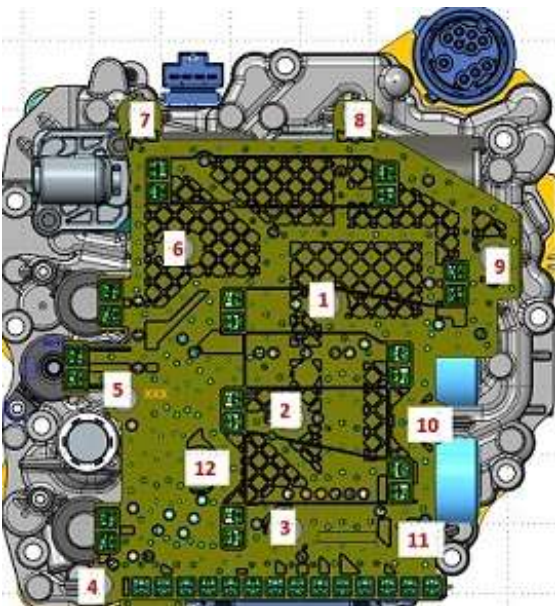


Figure 3. Mechatronic unit / contact plate for gearbox.

- Carefully detach the contact plate from the mechatronic unit towards the front, without levering it off.
- Fit new contact plate (see *Parts Information* for part number) on the mechatronic unit and carefully engage it audibly on the contacts (see figures 4 and 5).

⚠ CAUTION

Bent contacts when fitting contact plate on the mechatronic unit.

- It is essential to ensure that all contacts are inserted in the intended/correct connector and do not get bent when fitting the contact plate to the mechatronic unit (refer to figures 4 and 5).

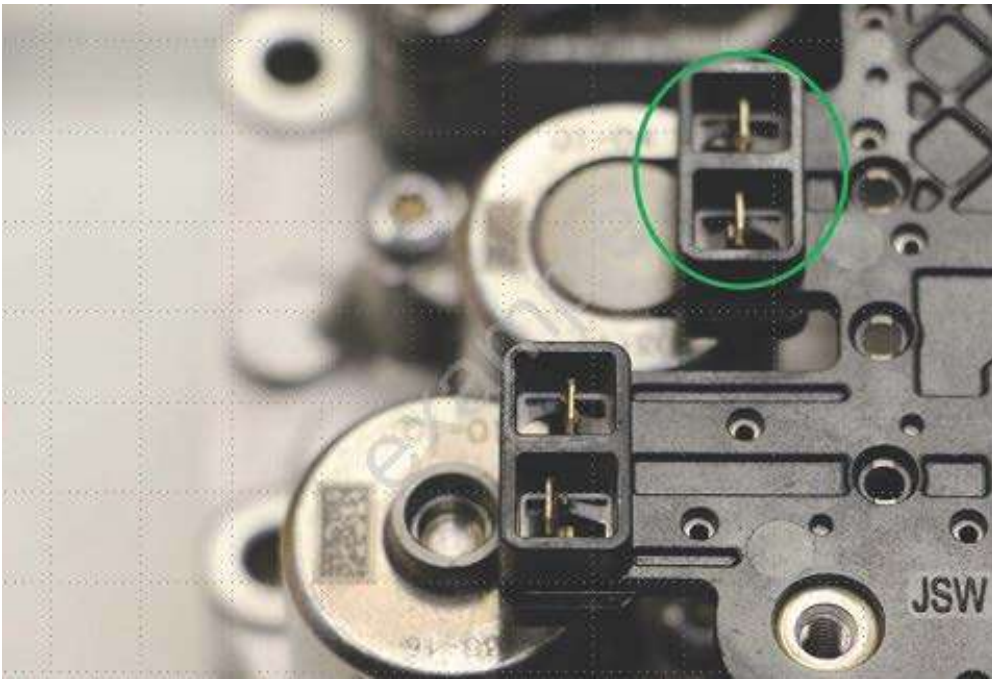


Figure 4. Contacts OK (green).

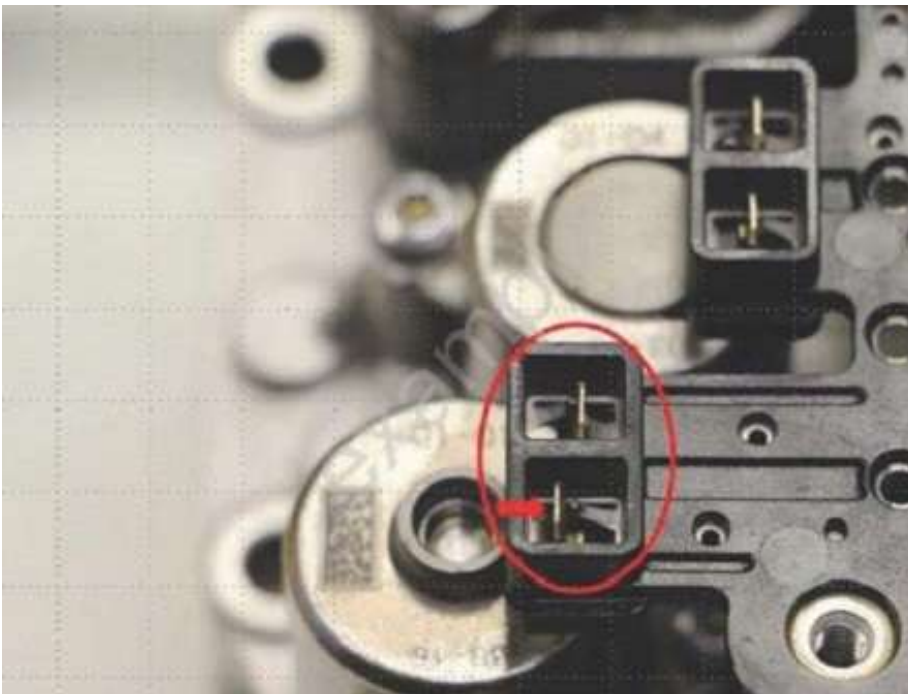


Figure 5. Contacts not OK (red).



CAUTION

Hair or dirt particles can cause functional restrictions to the mechatronic unit or cause it to fail.

- You must ensure the highest levels of cleanliness for all work on the mechatronic unit.
- Ensure no hair or dirt particles enter the system.

- Tighten new contact plate in two stages and in the specified order using new securing bolts (see *Parts Information* for part number).

- **Tightening sequence for securing bolts (contact plate):**
 - 1 -> 2 -> 3 -> 12 -> 5 -> 4 -> 11 -> 10 -> 9 -> 8 -> 6 -> 7
- **Tightening torque for securing bolts (contact plate):**
 - Stage 1: 2 Nm
 - Stage 2: 3 Nm + 30°

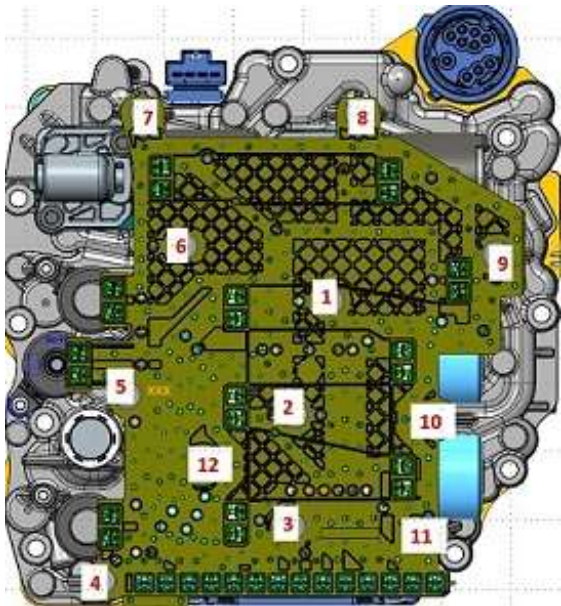


Figure 6. Tightening sequence for securing bolts on contact plate.

- Fit new cover for mechatronic unit according to Workshop Manual using new securing bolts (see *Parts Information* for part numbers).
- Check the oil level according to the Workshop Manual and fill up if necessary.
- Perform a road test and check that the performed repair/measure rectified the complaint.
 - If the performed repair/measure rectified the complaint, the vehicle can be returned to the customer.
 - If the performed repair/measure did not rectify the complaint, proceed according to Guided Fault Finding.

Warranty

NOTICE

The labor times correspond to the specified times in the repair operations list at the time of the publication of this TSB. There may be differences if the repair operations list has been updated in the meantime. If this is the case, the current time specifications in the repair operations list apply. Times to be entered manually (...99) are exempt from this

- The time required to use the Offboard Diagnostic Information System tester is not included in the times specified below. This time must be billed separately via the diagnostic log of the Offboard Diagnostic Information System tester
- This TSB does not apply if a different symptom number than 10739 or 10740 is logged for DTC P174A00 or P174E00. Please note that in this case, the costs of repairing the vehicle cannot be invoiced based on this TSB

Claim Type:	<ul style="list-style-type: none"> If the vehicle is outside of any warranty, this Technical Service Bulletin is informational only. 		
Service Number:	3878		
Damage Code:	0010		
Labor Operations:	Remove and install mechatronic unit cover	3460 19xx	See SRT with associated operations (1)
	Repair mechatronic unit	3511 4199	40 TU (1)
	GFF	1050 0060	Time stated on the diagnostic protocol
	Charge Battery	2706 8950	See SRT with associated operations
Claim Comment:	As per TSB 2077475/2		

All warranty claims submitted for payment must be in accordance with the *Audi Warranty Policies and Procedures Manual*. Claims are subject to review or audit by Audi Warranty.

(1) Because of the number of models, please refer to the repair operations catalog for the repair operation and the work that precedes and follows it.

The specified time may only be used for this TSB.

Required Parts and Tools



NOTICE

The part numbers and indexes of this TSB are correct at the time of publication. There may be mismatches if the parts catalogue has been updated in the meantime. In this case, the part numbers and indexes as currently specified in the parts catalogue apply.

Part number	Designation	Quantity
0GC 927 709 B	Contact plate	1
N 904 552 02	Bolt for contact plate	12
0GC 325 201 * (according to the Parts Catalogue)	Cover for mechatronic unit	1
N 910 327 02	Bolt for cover for mechatronic unit	4
G 055 529 A2	Gear oil	As per the Workshop Manual
0BH 325 147	Retaining clip	1
N 043 809 2	Seal	1

Additional Information

All parts and service references provided in this TSB (2077475) are subject to change and/or removal.

©2026 Audi of America, LLC / Audi Canada Inc. All rights reserved. The information contained in this document is based on the latest information available at the time of printing and is subject to the copyright and other intellectual property rights of Audi of America, LLC / Audi Canada Inc., its affiliated companies, and its licensors. All rights are reserved to make changes at any time without notice. No part of this document may be reproduced, stored in a retrieval system, or transmitted in any form or by any means, electronic, mechanical, photocopying, recording, or otherwise, nor may these materials be modified or reposted to other sites, without the prior expressed written permission of the publisher.