

2026 RAV4 PHV Pre-Delivery Service (PDS)

Service Category General

Section Pre-Delivery Service

Market USA

Toyota Supports
 ASE Certification 

Applicability

YEAR(S)	MODEL(S)	ADDITIONAL INFORMATION
2026	RAV4 PHV	

REVISION NOTICE

May 11, 2026 Rev1:

- The **Accessory Mode** section has been removed
 - The **VIN Synchronization** section has been included.
 - The **Required Tools & Equipment** section has been updated.
- Any previous printed versions of this bulletin should be discarded.

Introduction

Pre-Delivery Service (PDS) is a critical step in satisfying our new car customers. Customer feedback indicates the following areas deserve special attention when performing PDS:

- Careful inspection for paint chips/scratches and body dents/dings.
- Proper operation of electrical accessories (including interior light, clock, and radio reset).
- Interior cleanliness.
- Proper function of mechanical systems.

The PDS process helps identify potential vehicle concerns before customer delivery. After completing the PDS process, maintain accurate PDS records by ensuring the required documents listed below are completed and recorded in accordance with Toyota Warranty Policy.

- GTS+ Health Check
- Completed PDS Check Sheet
- Battery Charge Test Print Out
- GTS+ Tire Pressure Information

Customer retention and proper maintenance of vehicles are and have always been a major focus for Toyota. To help remind customers that regular service is essential to the proper maintenance of the vehicle, dealers are required to install a service reminder sticker before delivery. By doing this, customers will be reminded to return to your dealership for service. Your current service reminder sticker may be used. (See PDS *Check Sheet* item 7 of “Final Inspection and Cleaning.”)

2026 RAV4 PHV Pre-Delivery Service (PDS)

Introduction (continued)

This bulletin contains the PDS procedures that apply specifically to 2026 model year RAV4 Plug-in Hybrid vehicles.

Refer to [T-SB-0023-25](#), the universal *Check Sheet* that contains PDS steps that apply to all 2026 model year Toyota vehicles. To properly perform a complete PDS, you must complete all procedures contained in this TSB as well as the universal PDS *Check Sheet*. In addition, if the vehicle is stored for over 30 days, refer to [T-SB-0002-26](#), *Long-Term Vehicle Storage Guidelines*.

Refer to the table below for a definition of terms that may be used in this bulletin.

Table 1.

TERM	ACRONYM	DEFINITION
Conventional Vehicle	CV	A vehicle with only a gasoline engine for propulsion
Electrified Vehicle	EV	A vehicle that utilizes a hybrid, plug-in hybrid, fuel cell, or battery electric system for propulsion
Hybrid Electric Vehicle	HEV	A vehicle with both a gasoline engine and an HV battery
Plug-in Hybrid Electric Vehicle	PHEV	A vehicle with both a gasoline engine and an HV battery that can be charged externally
Battery Electric Vehicle	BEV	A vehicle with only an HV battery that can be charged externally
Fuel Cell Electric Vehicle	FCEV	A vehicle with both a hydrogen fuel cell and an HV battery
State of Charge	SOC	The remaining capacity available in a battery
12-Volt	12V	Standard 12V battery used to power electrical systems separate from high voltage components
High Voltage	HV	HV battery used to power the electrified vehicle

2026 RAV4 PHV Pre-Delivery Service (PDS)

Table of Contents

- [Warranty Policy](#)..... 4
- [Warranty Information](#) 4
- [Required Tools & Equipment](#) 4
- [D/C Cut Fuse Installation](#)..... 5
- [If a Permanent DTC is Present](#) 6
- [Front License Plate and Mounting Bracket Installation](#) * 6
- [Front Emergency Towing Eyelet Removal and Hole Cover Installation](#) * 7
- [Installation of Rubber Body Plugs](#)* 9
- [Check Torque of Wheel Fasteners](#)..... 10
- [Tire Pressure Warning System \(TPWS\) Initialization](#) 10
- [Seat Position Control ECU Initialization](#)* 10
- [VIN Synchronization](#) 11
- [Head Unit System Reset](#) 11
- [Driving Assist Setting Enhancement](#) 12
- [Changing The Date & Time Settings](#)..... 12

*If applicable.

2026 RAV4 PHV Pre-Delivery Service (PDS)

Warranty Policy

If the need for additional repairs or adjustment is noted during PDS, the required service should be performed under warranty. Reimbursement will be managed under the warranty policy.

The Warranty Policy and Procedures Manual requires that you maintain the completed Check Sheet in the customer's file. If you cannot produce a completed form for each retailed vehicle upon TMS and/or Region/Distributor audit, the PDS payment amount will be subject to debit.

An additional Repair Order completed in conjunction with normal PDS MUST have time punch/flags for service. If multiple repairs are performed, separate time flags MUST be punched for each repair.

Warranty Information

OP CODE	DESCRIPTION	MODEL	TIME	OFP	T1	T2
001013	Pre-Delivery Service (PDS)	RAV4 PHV	1.5	-	-	-

Required Tools & Equipment

REQUIRED EQUIPMENT	SUPPLIER	PART NUMBER	QTY
Techstream ADVi* w/ Grey Case VIM**	ADE	TSADVUNITECP	1
Techstream Lite w/ Blue & Black Case w/Detachable Cable**		TSLP3DLR01	

*Essential SST.

**MFC3 VIM is required for communication with this model.

NOTE

- Only ONE of the Techstream units listed above is required.
- GTS+ software version 2026.01.003.02. or later is required.
- Additional Techstream units may be ordered by calling Approved Dealer Equipment (ADE) at 1-800-368-6787 or by visiting *TIS – Diagnostics – Tools & Equipment – Techstream Order Portal*.

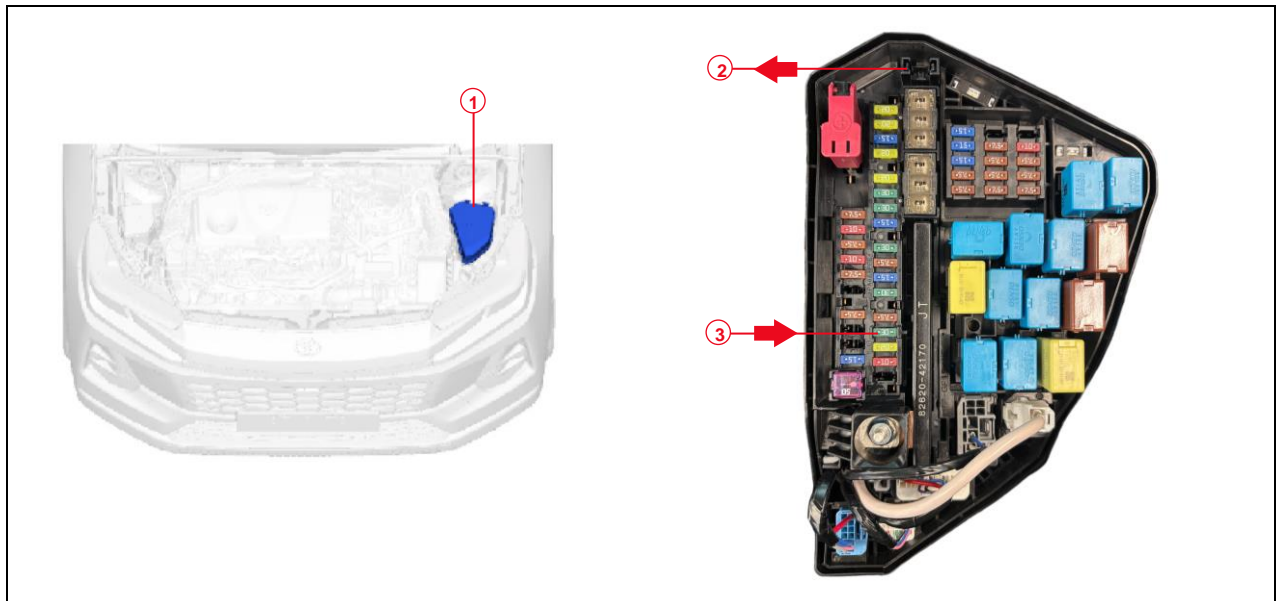
2026 RAV4 PHV Pre-Delivery Service (PDS)

D/C Cut Fuse Installation

Check the location of the D/C Cut fuse. It may have been removed at the assembly plant and temporarily stored in the blank space of the relay block in the engine compartment to minimize battery discharge during transportation and storage.

- If the D/C Cut fuse is still in its original location in the relay block, proceed with performing a Health Check using GTS+.
- If the D/C Cut fuse is NOT in its original location, it is necessary to remove the D/C Cut fuse from the blank space in the relay block and reinstall it to its original location as shown. After installation, confirm ALL related DTCs are cleared.

Figure 1.



1	Relay Block
2	Remove the D/C Cut Fuse (30A) (Blank Space)

3	Install the D/C Cut Fuse (30A) (Original Location)
----------	---

NOTE

- With the D/C Cut fuse (30A) removed, if ANY DTCs are detected when the ignition is turned ON during transportation, use GTS+ to clear ALL DTCs after ensuring that there are NO malfunctions.
- While the vehicle is stored at the dealership, disconnect the negative (-) battery terminal to prevent battery discharge. Refer to [T-SB-0005-26](#), *Battery Inspection and Maintenance during PDS*, for battery maintenance information.

2026 RAV4 PHV Pre-Delivery Service (PDS)

If a Permanent DTC is Present

A permanent DTC may be stored even if no warning is displayed on the combination meter. There is not a problem with driving the vehicle. The permanent DTC will be deleted when the driving conditions are met.

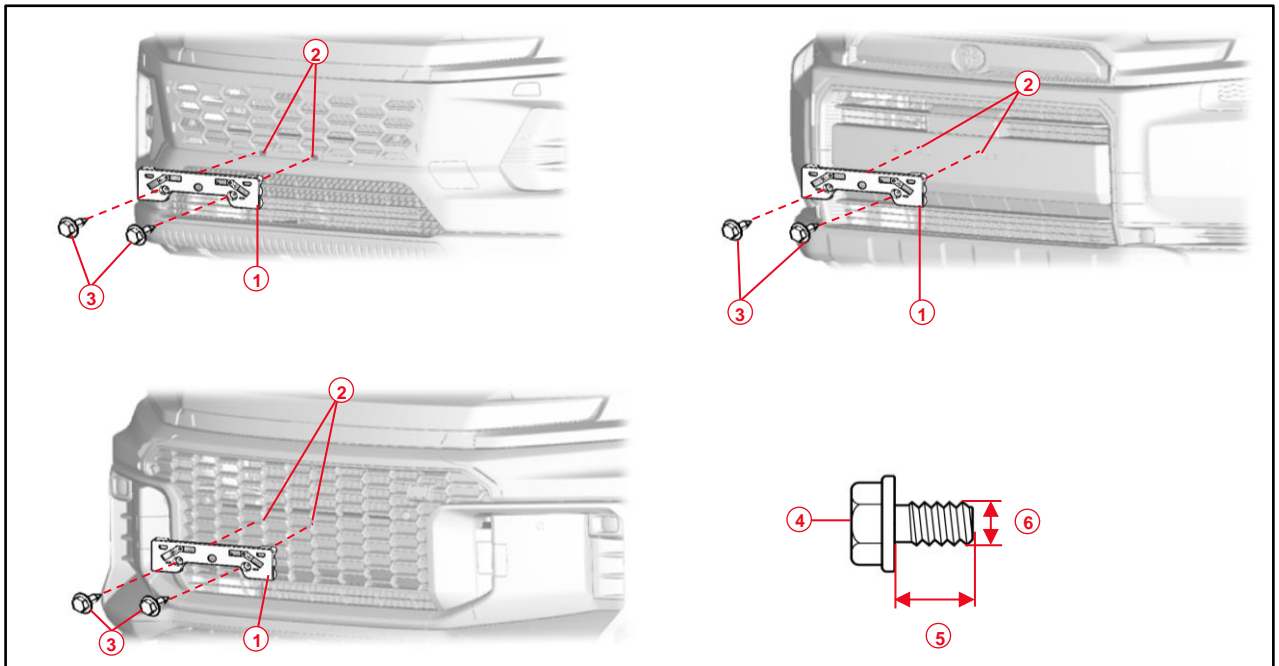
Meet the following conditions during one drive cycle:

1. Keep the vehicle in READY mode (or with the engine running) for a total of 10 minutes.
2. Drive at a speed of 25 mph or higher for a total of 5 minutes.
3. Stop the vehicle and idle without pressing any pedals for a continuous 30 seconds.

Front License Plate and Mounting Bracket Installation (If applicable)

The front license plate mounting bracket kit is stored in the vehicle. Follow this procedure to install the front license plate bracket and front license plate in states where it is required by law.

Figure 2.



1	Mounting Bracket
2	Dimples
3	Screws

4	Bolt
5	Length
6	Diameter

1. Align the mounting bracket with the dimples and attach the two screws to secure the front license plate mounting bracket.
2. Install the front license plate onto the mounting bracket using two noncorroding bolts with the following dimensions:

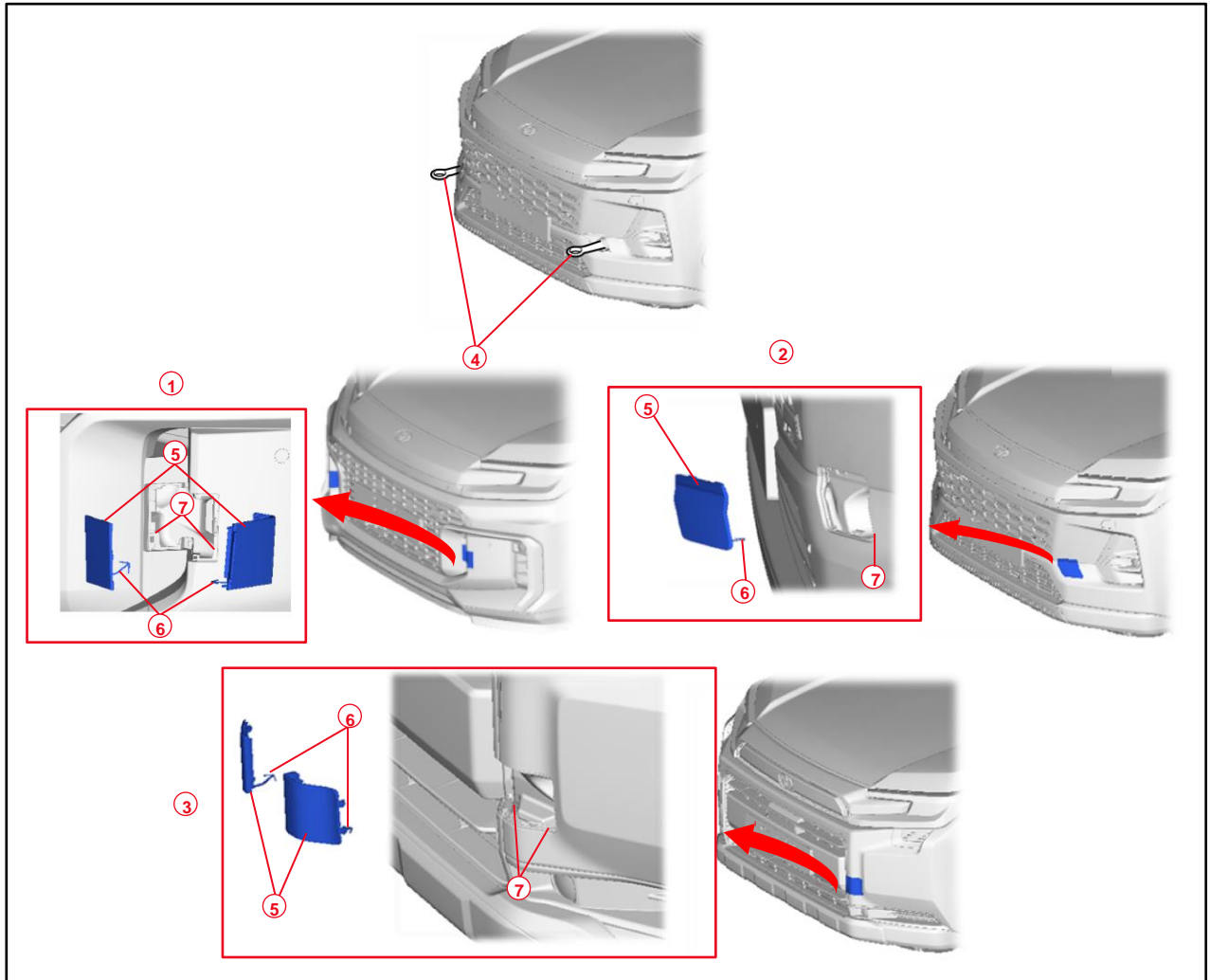
Length: 15.0 mm (0.59 in.)

Diameter: 6.0 mm (0.24 in.)

2026 RAV4 PHV Pre-Delivery Service (PDS)

Front Emergency Towing Eyelet Removal and Hole Cover Installation (If applicable)

Figure 3.



1	Type A
2	Type B
3	Type C
4	Front Emergency Towing Eyelets

5	Front Emergency Towing Eyelet Hole Cover
6	Arrow-shaped Part
7	Eyelet Hole

2026 RAV4 PHV Pre-Delivery Service (PDS)

Front Emergency Towing Eyelet Removal and Hole Cover Installation (If applicable) (continued)

1. Remove the front emergency towing eyelets from the front bumper by turning them counterclockwise.

NOTE

If it is difficult to loosen the front emergency towing eyelets, use a steel bar.

2. Place one of the removed emergency towing eyelets into the tool bag in the luggage storage. For models without tool bag, place the eyelet into the rear luggage tray.

NOTE

Dispose of the other removed emergency towing eyelet.

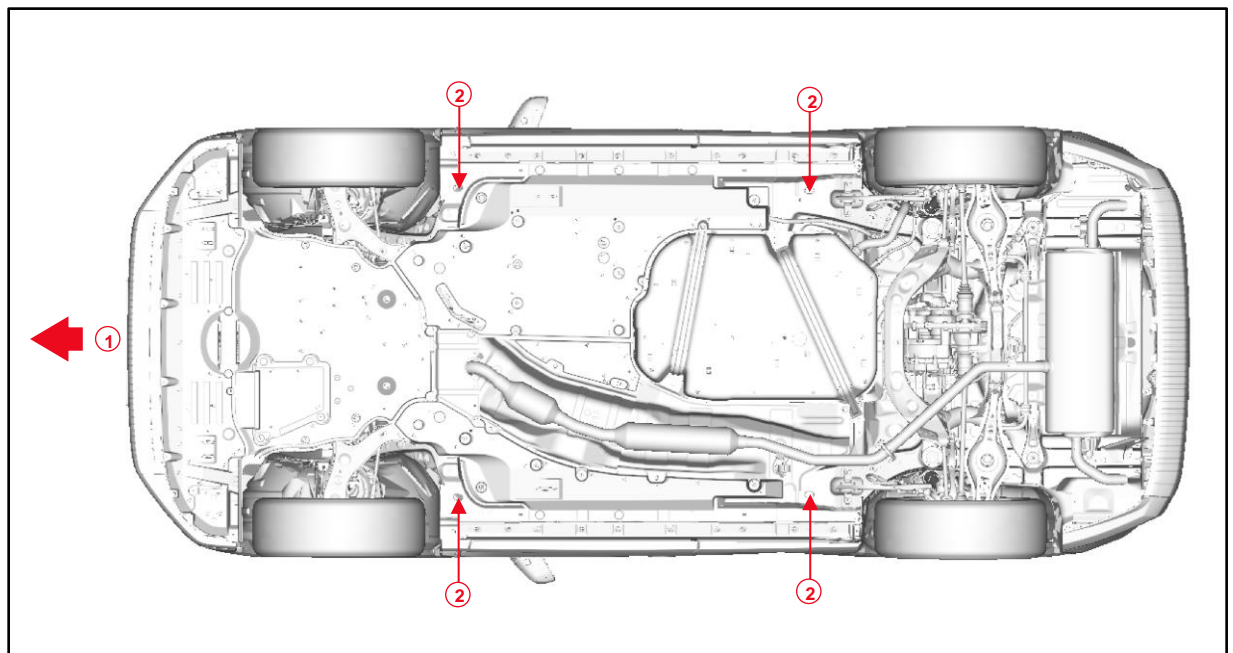
3. Install the front emergency towing eyelet hole covers, which are stored in the vehicle, onto the front bumper.
 - A. Insert the arrow-shaped part of the emergency towing eyelet hole cover into the eyelet hole as shown.
 - B. Install the front emergency towing eyelet covers onto the front bumper.

2026 RAV4 PHV Pre-Delivery Service (PDS)

Installation of Rubber Body Plugs (for vehicles made in Japan)

1. Confirm the number of plugs in the glove box. If two plugs are present, perform substep 2A ONLY. If four plugs are present, perform substep 2A AND substep 2B.
2. Install the plugs according to the instructions below by confirming the number of plugs in the glove box.
 - A. Install two plugs in the rear as shown.
 - B. Install two plugs in the front as shown.

Figure 4.



1	Front Side
----------	-------------------

2	Install Plug Here (if Applicable)
----------	--

NOTICE

- The installation of these plugs is required to prevent rust.
- These plugs are stored in the glove box.
- The number of plugs may vary according to production locations in the same vehicle model.

2026 RAV4 PHV Pre-Delivery Service (PDS)

Check Torque of Wheel Fasteners

Using a calibrated torque wrench, verify the wheel fasteners on each wheel are tightened to at least the specified torque listed in the Repair Manual:

- [2026](#) RAV4 PHV:
General – Maintenance – Tire and Wheel – Installation

NOTICE

Do NOT continue to tighten once verified.

Tire Pressure Warning System (TPWS) Initialization

Refer to the applicable Repair Manual for the TPWS initialization procedure.

- [2026](#) RAV4 PHV:
Suspension – Tire Pressure Monitoring – Tire Pressure Warning Receiver – Initialization

NOTE

- When the outside temperature is significantly colder than the shop's temperature, or there is a significant ambient temperature change overnight, use GTS+ to determine the proper tire pressure.
- From the Health Check Result Status pane, select the refresh button within the Compensation Pressure data display.
- This model has four TPWS sensors.

Seat Position Control ECU Initialization

The seat ECU must be initialized after reinstalling the D/C Cut fuse during PDS.

Refer to the applicable Repair Manual for the seat Position Control ECU Initialization procedure (procedure 2).

- [2026](#) RAV4 PHV:
Vehicle Interior – Seat – Front Power Seat Control System (w/ Memory) – Registration

2026 RAV4 PHV Pre-Delivery Service (PDS)

VIN Synchronization

After the D/C Cut fuse has been installed, perform the VIN synchronization utility with GTS+ to ensure the best customer experience with telematic service-related features.

1. Connect GTS to the DLC3.
2. Turn the power/engine switch on.
3. Enter the following menus: *Body Electrical / Telematics / Utility / VIN Synchronization*.
4. Follow the display on the GTS.
5. Turn the power/engine switch off.
6. Turn the power/engine switch on for 60 seconds.

NOTE

Enter the following menus: *Body Electrical / Telematics / Data List*. When the state of "Communication Status with TSC" is "Complete", the VIN synchronization is complete.

Head Unit System Reset

Before vehicle delivery, confirm that the head unit display shows the welcome screen with the options "Create Profile" and "Sign In" when the ignition is in the ON position. If the welcome screen does not appear, complete the following steps:

1. Turn the engine switch (power switch) to the ON position (ON mode).
2. Enter the Following menus: *Settings (gear icon) – Profile*.
3. Select "Reset System".

NOTE

Ensure the head unit remains ON until the welcome screen is displayed. The head unit may reset automatically during the process.

2026 RAV4 PHV Pre-Delivery Service (PDS)

Driving Assist Setting Enhancement

To enhance user experience please make the following adjustments to Driving Assist. The following two adjustments will be made from the *Notifications* menu.

1. Turn the engine switch (power switch) to the ON position (ON mode).
2. Enter the Following menus: *Settings* (gear icon) – *Driving Assist*.
3. Select “*Notifications*”.
4. Select the *Road Sign Assist (RSA) - Settings* (gear icon).
5. Select the blue text “*Speed Limit +3*” to the right of *Speed Limit Caution Timing*. At the popup select “*Speed Limit +5 mph*”.
6. At the upper left portion of the screen select the blue text “*Notifications*”.
7. Select “*Driver Monitor*”.
8. Select the blue text “*High*” to the right of “*Warning Sensitivity*”. At the popup select “*Low*”.

NOTE

Only complete during PDS or after the Head Unit System Reset has been completed.

Changing The Date & Time Settings

Prior to vehicle delivery, it is necessary to turn the Set date & time automatically setting to the ON position.

1. Turn the engine switch (power switch) to the ON position (ON mode).
2. Navigate the following menus in the head unit: *Settings* (gear icon) – *General* – *Date & Time*.
3. Ensure the Set date & time automatically function is set to the ON position.