


| | | | | | | | |
|---|--|---|----------------------|-----------|-------|---|---------------------|
|  | | MODEL Z FRONT CAP REPOSITIONING INSTRUCTIONS | | | 4 | 4 | Difficulty Level |
| | | | | | | 3 | |
| | | | | | | 2 | |
| | | | | | | 1 | |
| | | | | | | 0 | |
| WI: | WI-092-2026 Model Z Front Cap Repositioning Instructions | | | | | | |
| PRODUCT: | Model Z (See Below) | VIN Range: | 000001 - Current | REVISION: | REV-A | | |
| DATE: | May 12, 2026 | LABOR RATE: | 1.5 Hours Labor Time | | | | |

Instruction Overview

Certain Model Z units may have the front cap installed in a manner that contacts the structure behind it. As a result, there is the possibility a “bulge” may occur in the cap. Should this occur, the following procedure for repositioning the front cap will eliminate this anomaly.

| AFFECTED FLOORPLANS | |
|---------------------|--------|
| Z 2670 | Z 2680 |
| Z 2700 | Z 2810 |
| Z 2900 | Z 3110 |
| Z 3210 | - |

Safety:

Safety is and should always be observed when performing any type of repair or installation. ANSI (American National Standards Institute) has created a standardized labeling system for different levels of safety and danger. The labels below provides information regarding those levels of danger, and should be observed and adhered to at all times.

CAUTION

The “CAUTION” symbol above is a sign that a procedure has a safety risk involved and may cause personal injury, product and/or property damage if not performed safely and within the parameters set forth in this document.

CAUTION

CAUTION: Always wear Personal Protection Equipment (PPE), such as eye protection, ear protection, gloves and possibly a full face shield depending on the nature of the task to be performed.

TOOLS REQUIRED (NOT PROVIDED):

- | | |
|------------------------|----------------|
| 1. Screw gun | 3. Razor knife |
| 2. #2 Square drive bit | 4. Putty stick |
| | 5. Caulk gun |

**PARTS INFORMATION**

PARTS NEEDED LIST (Most RV Service Centers will stock these items - order as needed if not)

| PART # | Description | Qty |
|--------|--|-----|
| 101006 | SEALANT SILICONE 10.1 OZ BLACK TREMSIL ACETOXY | 1 |
| 102489 | TAPE BUTYL COVERED FOAM 3/16" X 66' BLACK BC-1051 (24 RL/CS) | 24' |
| 100996 | TAPE FOAM 1/4" X 5/8" X 35' BLACK | 12' |
| 100550 | SEALANT 2300 VEHICLE BODY 10.3 OZ CLEAR VBS GC63000 (24/CTN) | 1 |

WARRANTY INFORMATION**NO ADVANCED CONTACT OR PRIOR AUTHORIZATION REQUIRED****CLAIM REIMBURSEMENT PROCESSING:**

All reimbursement requests with completed work orders, including any freight expenses and photographs, should be submitted via a claim in the Brinkley RV Dealer Portal. If you do not have access to our Portal, a claim can be emailed to VCB-Claims@Brinkleyrv.com.

REQUIRED INFORMATION FOR IMMEDIATE REIMBURSEMENT PROCESSING INCLUDES:

1. The full 17 digit VIN;
2. The Retail Name if retail sold;
3. Dealer Name;
4. Dealer Address;
5. Dealer Phone Number;
6. Dealer Hourly Labor Rate;
7. Work Order detailing the work performed and labor time, and
8. Before and after photographs of the completed repair.

Reimbursement checks for claims submitted with all requested information are issued weekly.



WORK INSTRUCTIONS:

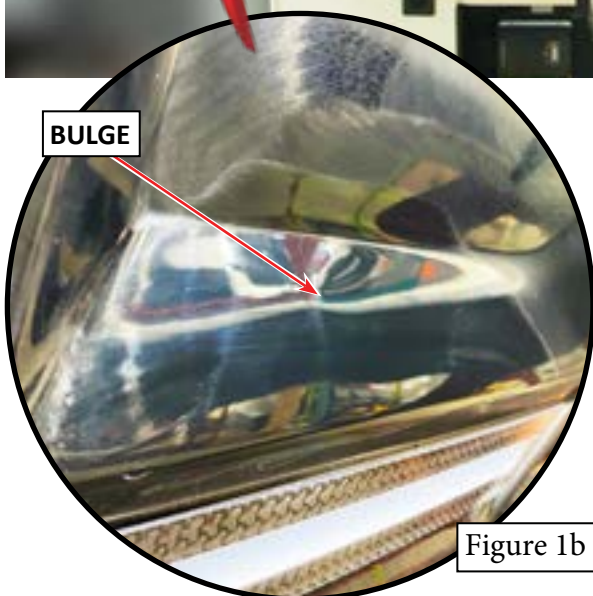
- 1. READ AND UNDERSTAND ALL INSTRUCTIONS PRIOR TO BEGINNING WORK.**
- Inspect the front cap for a bulge in the flat portion of the lower front section (Figure 1a, 1b and 1c). Bulges can occur on either side or both sides.

+ NOTICE

NOTICE: If the bulge is **ONLY ON ONE SIDE**, only perform the following procedure on that side.

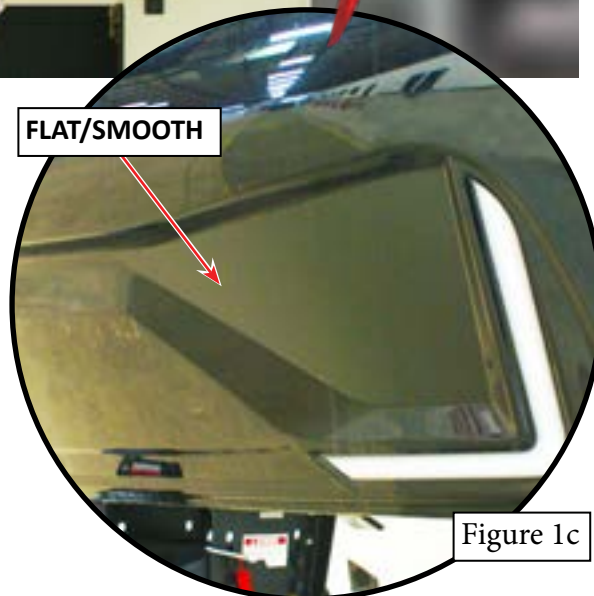


Figure 1a



BULGE

Figure 1b

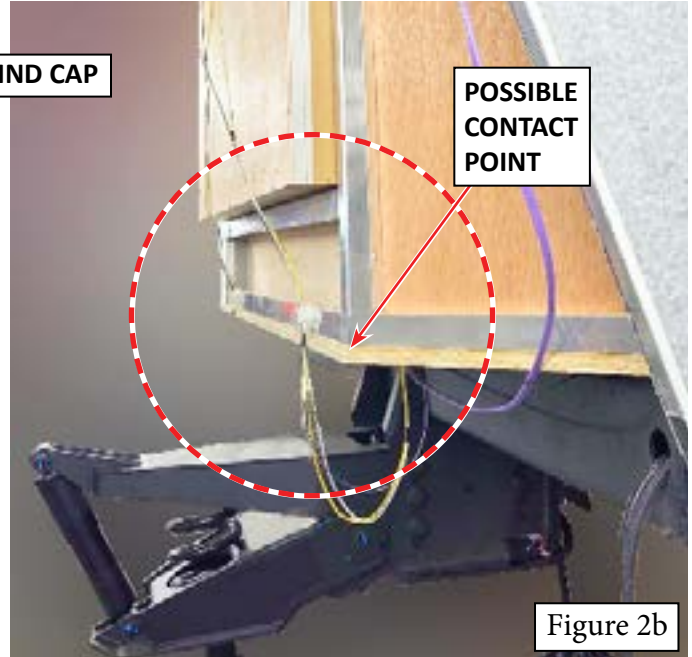
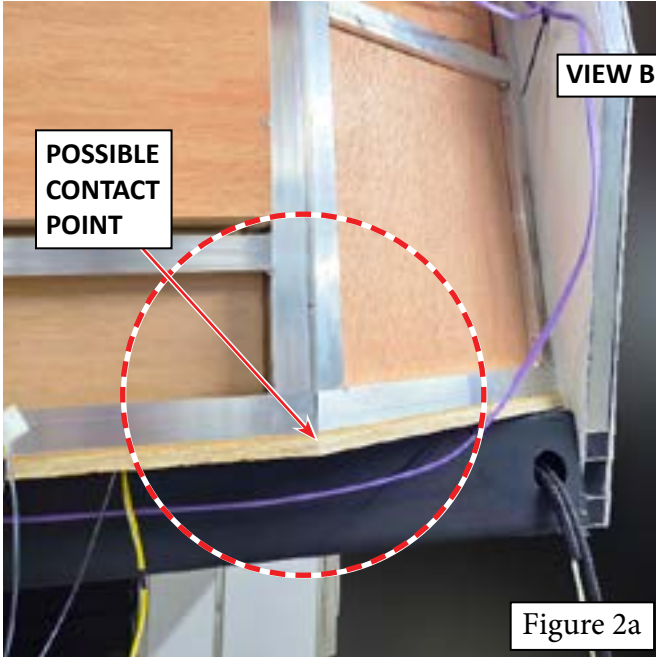


FLAT/SMOOTH

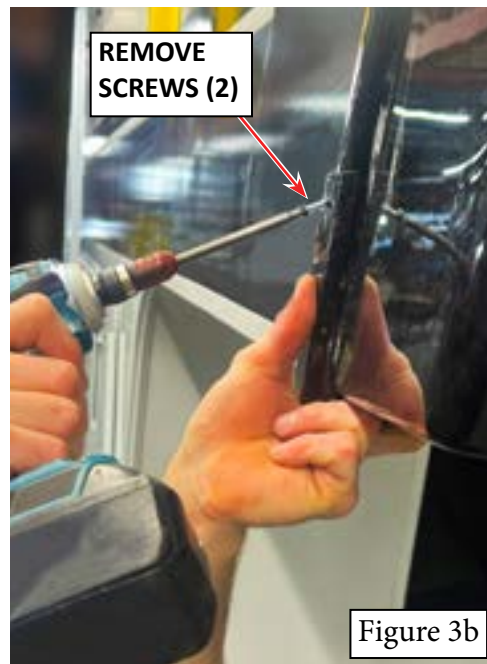
Figure 1c



3. If a bulge is present, it is likely caused by the cap being too far back, which causes physical contact with the lower corner portion of the “cage” support structure behind it (Figure 2a and 2b).

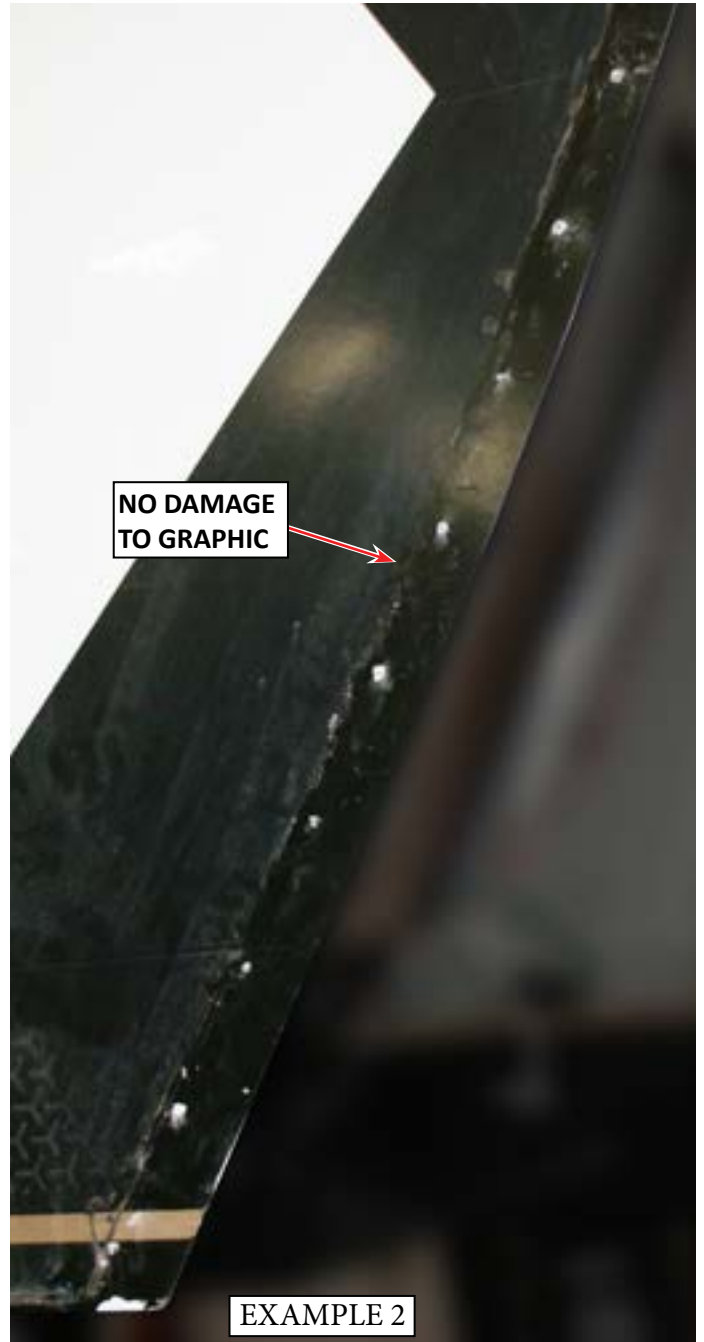


4. To remove the anomaly, the lower portion of the cap must be moved forward approximately 3/16” on the side where the bulge is. Use a razor knife to cut the sealant around the lower trim cover (Figure 3a).
5. Use a screw gun and a #2 square drive bit to remove the two (2) fasteners holding the lower front corner trim cover in place (Figure 3b). Remove the lower corner cover (Figure 3c).

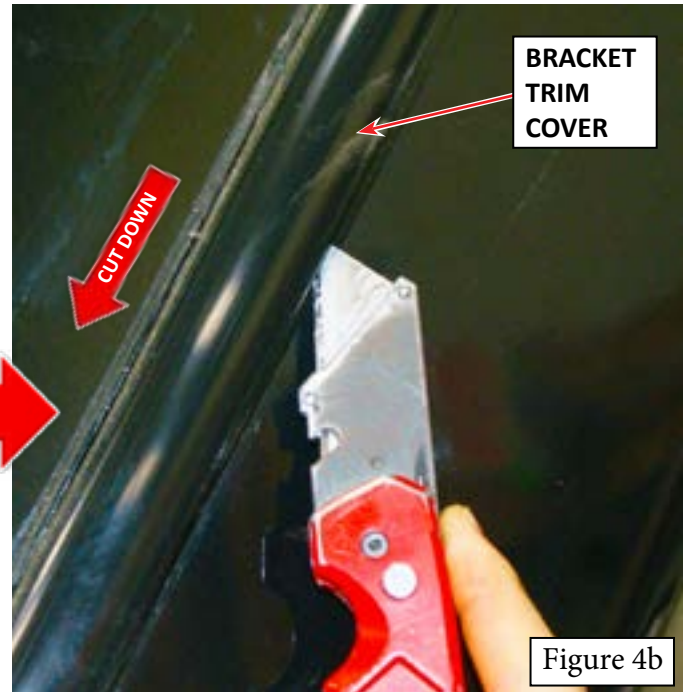


⚠ CAUTION

USE CAUTION when cutting and removing the seals between the cap and the sidewall. If the sidewall graphic is damaged, it will have to be replaced. Examples below show the difference between careless (Example-1) and careful (Example-2) cutting of the decals that are installed between the cap and the sidewalls. For a detailed list of sealants used to seal the cap to the sidewall, see Figure 12, Page 10. Unnecessary damage may occur to the sidewall graphics if not performed safely and within the parameters set forth in this document.



6. Starting approximately 3/4 of the way up the sidewall (Figure 4a), use a razor knife to score the seal at the snap-on trim (Figure 4b). **DO NOT cut the trim seal above the indicated location or across the roof.**



7. Pull the trim off of the rail down the side (Figure 5a) and beneath the upperdeck to the side of the pin box (Figure 5b).



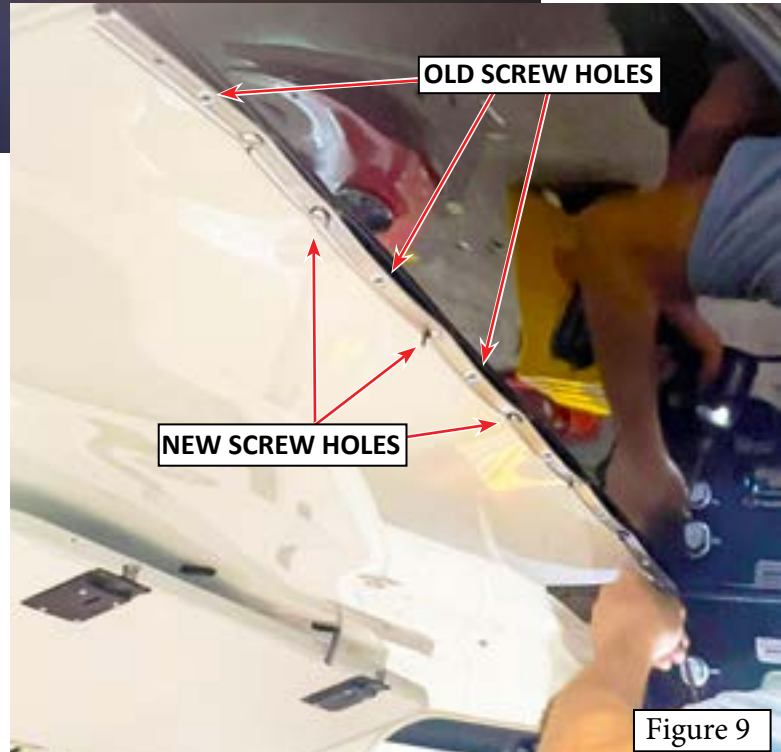
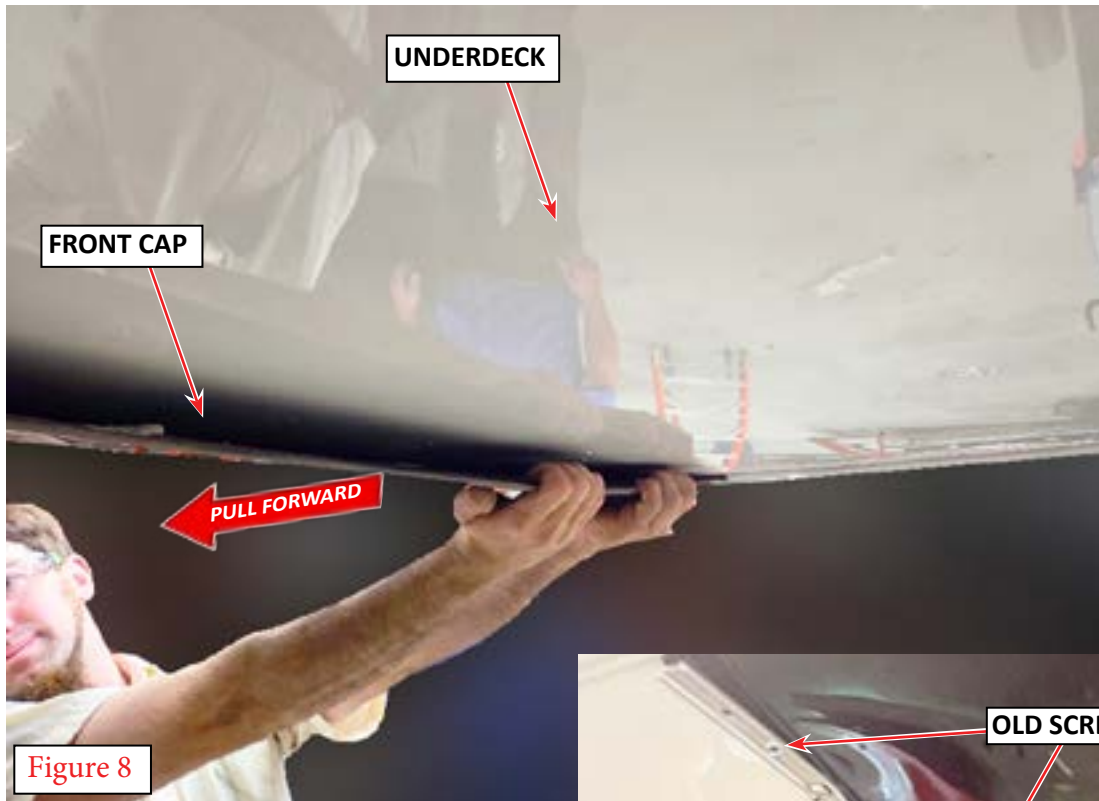
8. Use a screw gun with a #2 square drive bit to remove the fasteners holding the trim rail to the body and upperdeck **ONLY** on the side with the bulge (Figure 6a and 6b).



9. On the side of the cap where the bulge is located, carefully use a putty stick to gently pry the cap loose where it meets the body (Figure 7a and 7b). **USE CAUTION NOT TO DAMAGE THE SIDEWALL GRAPHIC** while breaking the seal between the cap and sidewall. Start with the putty stick at the end of the trim rail.

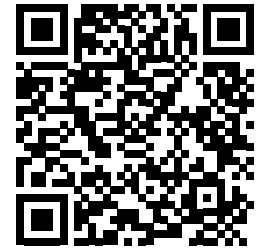


10. Once the cap is loose from the body, move the bottom of the cap forward $\frac{3}{16}$ ". Gently pull the bottom of the cap forward from below by hand (Figure 8).
11. Use a caulk gun and GEOCEL 2300 Black Body Sealant (P/N 100550) to seal the old screw holes shut (not shown).
12. When the cap has been moved forward $\frac{3}{16}$ ", hold it in place while a second person uses a screw gun with a #2 square drive bit to install the original screws in **NEW** screw holes in the trim plate between the original holes (Figure 9).



+ NOTICE

NOTICE: BEFORE screwing the trim rails for the side of the cap into position, inspect the graphics to be sure there is no visible damage at the edge by the cap. If there is damage, the graphic **MUST** be replaced. **NOTE** that the graphic can be replaced without removal of the cap - the edge of the graphic at the cap must be trimmed and tucked beneath the edge of the cap before sealants are applied. For additional information on replacing graphics, scan the QR code to view the video on installing graphics.



13. Using a caulk gun and a tube of TREMPRO 644 Black (P/N 101006) press a bead of the sealant into the seam at the back edge of the cap where it meets the sidewall (Figure 10).
14. Apply 3/16" X 3/16" BCF (Butyl tape - P/N 102489) by pressing it into the seam between the cap and the sidewall (Figure 11).

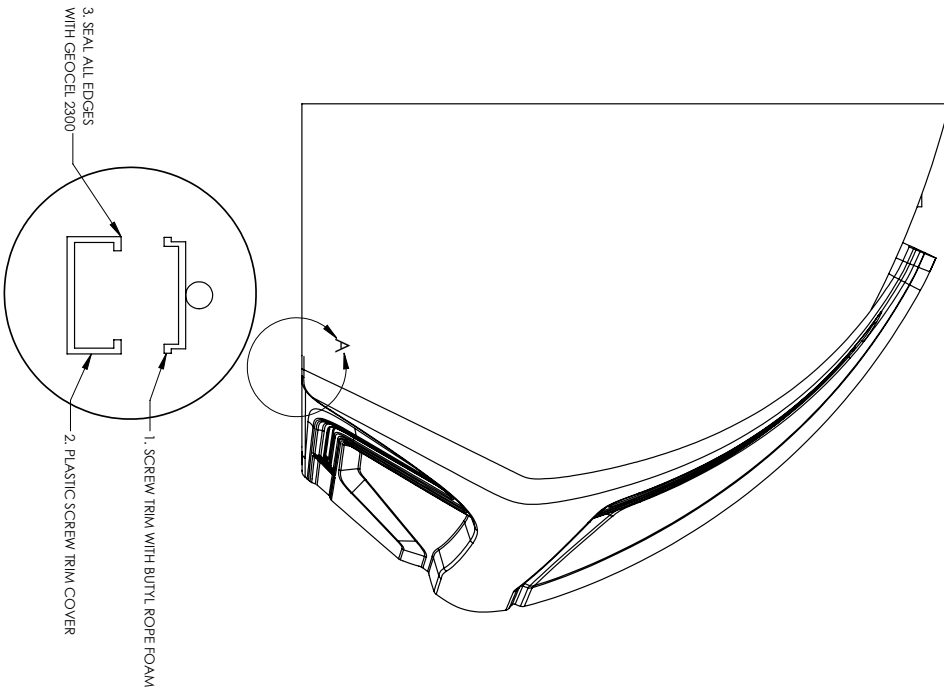


+ NOTICE

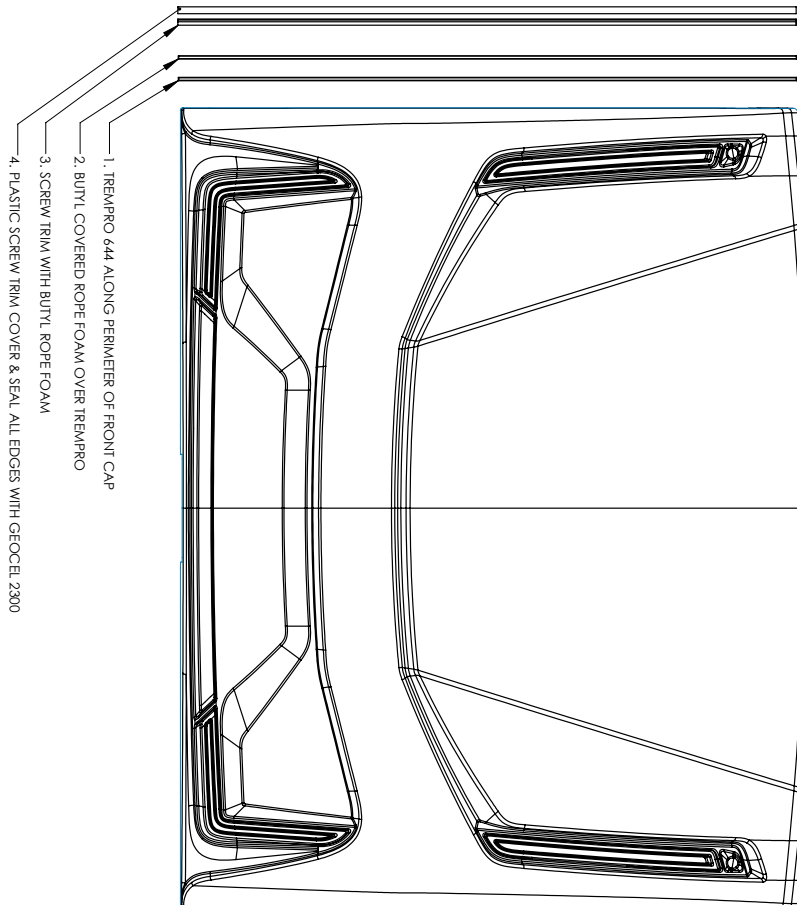
NOTICE: Refer to diagram (Figure 12) on Page 10 for Seal Stack Print.



FRONT CAP - ALCOVE



FRONT CAP - SIDEWALL



FRONT CAP SEAL STACK PRINT

Figure 12



15. Use a screw gun with a #2 square drive bit and the original fasteners to install the sidewall trim rail in place. Install the fasteners in new holes that are equally spaced between the original holes (as with the upperdeck trim rail) (Figure 13).
16. Snap the screw cover trim back in place on side and bottom trim rails (Figure 14).



Figure 13



Figure 14

17. Install the lower corner cap over the screw cover trim using a screw gun with a #2 square drive bit and the original fasteners (Figure 15a and 15b).



Figure 15b



Figure 15a

18. Apply a bead of GEOCEL 2300 Black Body Sealant (P/N 100550) around the perimeter of the screw cover trim on the sidewalls and underdeck, and around the lower corner cap (Figure 16a, 16b and 16c).



Figure 16a



Figure 16b



Figure 16c

19. Repair complete (Figure 17).

