


<b>Title:</b>	<b>MCC Filter Indicator</b>			
<b>Number:</b>	<b>SB_787</b>	<b>Release Date:</b>	<b>05/19/2026</b>	
<b>Revision Number:</b>	<b>Not Applicable</b>	<b>Revision Date:</b>	<b>Not Applicable</b>	
<b>Chassis Type:</b>	<b>All Chassis</b>			
<b>Component Description:</b>	<b>MCC filter assemblies</b>			
<b>Parts:</b>	<b>Filter Assembly (PN 3572863)</b>			

This is a Service Bulletin. Parts and labor associated with the information outlined in this bulletin are listed for informational purposes only and are not covered under warranty. Parts associated with this information can be purchased through the local dealer network.

**Subject:**

MCC filter assembly PN 3572863 - moisture indicator sight glass

**Purpose:**

This bulletin provides dealer guidance for MCC filter assemblies when the moisture indicator sight glass appears to show a “wet” condition before installation, after installation, or on replacement filter assemblies.

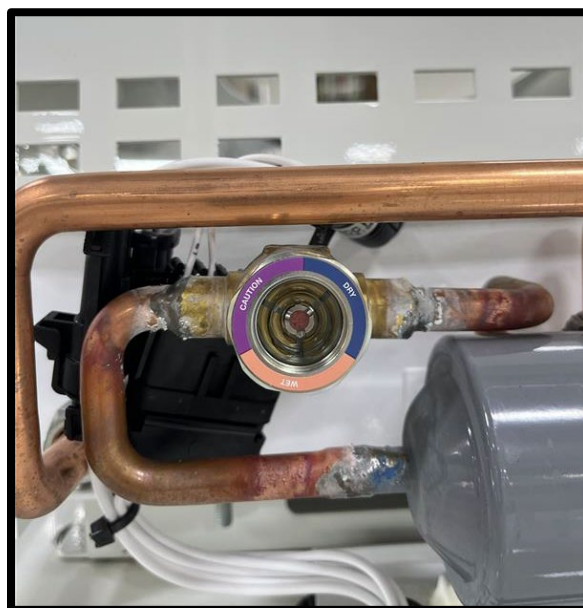
***IMPORTANT:***

**By itself, a wet-color indication does not automatically confirm that the MCC filter assembly is defective or that it must be replaced.**

**Background:**

Pierce has received reports of MCC filter assemblies being replaced because the moisture indicator appeared to show a wet condition. Supplier review found that these filters are vacuum dried before shipment and that MCC has implemented a standard packaging instruction for filter assemblies.

The indicator sight glass is sensitive to ambient moisture. Depending on storage, handling, shipping duration, and exposure to the surrounding environment, the indicator may change color even though the filter assembly is acceptable for use.



## SERVICE BULLETIN #787

### Information:

- The filter assembly should be dry when received, but the moisture indicator may change color due to normal ambient exposure.
- Dust caps over the tube openings may allow enough ambient moisture exposure over time to affect the indicator color.
- The sight glass indicator itself is moisture-sensitive and may react to the ambient environment.
- Reprocessing the filter through a vacuum dry process may remove potential moisture but may not change the indicator back to the dry color.
- When the filter is installed in an operating refrigeration system, the indicator should adjust to the moisture level in the refrigerant. Supplier guidance indicates this may take approximately 12 hours of system operation.

### Dealer Action:

1. Do not replace the MCC filter assembly based only on the indicator showing the wet color before installation or immediately after installation.
2. Inspect the filter assembly for shipping damage, damaged tubes, missing caps, contamination, or other visible damage. If visible damage is present, follow normal technical support and parts return processes.
3. If the filter assembly is otherwise undamaged, install the filter assembly using the applicable service procedure.
4. Operate the refrigeration system and allow approximately 12 hours for the moisture indicator to stabilize to the refrigerant moisture level.
5. After the operating period, recheck the moisture indicator. If the indicator returns to the dry color, no further action is required.
6. If the indicator remains in the wet color after the operating period, open a technical support incident for review. The filter assembly may be faulty and may need to be returned through the normal process.

### **NOTE:**

**A filter that continues to show a wet indication after system operation should not be automatically discarded. Document the condition, include photos if available, and contact Pierce Technical Support for direction before replacement or return.**

If any additional support is needed, please open a technical support incident on [www.pierceparts.com](http://www.pierceparts.com).