

Title:	Hose Bed Grip Tape Installation			
Number:	SB_768	Release Date:	05/05/2026	
Revision Number:	Not Applicable	Revision Date:	Not Applicable	
Chassis Type:	ALL			
Component Description:	Hose bed grip tape			
Parts:	Anti-slip Tape, Black (PN 4710853)			
Tools:	Dual Action Sander, Paper Towel			

This is a Service Bulletin. Parts and labor associated with the information outlined in this bulletin are listed for informational purposes only and are not covered under warranty. Parts associated with this information can be purchased through the local dealer network.

Purpose:

This bulletin covers the proper procedure for the replacement/installation of grip tape on hose bed grating.

Procedure:

NOTE:

- Do not apply Safety Track when the surface temperature is below 50°F (10°C).
- Safety Track is ready for immediate use after installation – no cure time required.

1. Surface Preparation

- a. Remove existing grip tape.



While removing adhesive, lightly sand surface to prevent damage to metal finish. Failure to comply may result in damage to equipment.

- b. Using a Dual Action sander, remove adhesive and touch up corner areas near cutouts to ensure surfaces are smooth.

2. Remove Debris

- a. Blow off the panel using a compressed air hose to remove all shavings, debris, and dust.

3. Clean Surface

- a. Spray the grating with an alcohol solution.



Do not use reusable shop rags, as they may contain grease or oil residue that can cause adhesion issues.

- b. Wipe thoroughly to remove all debris, adhesive, and excess moisture using a disposable, white paper towel.

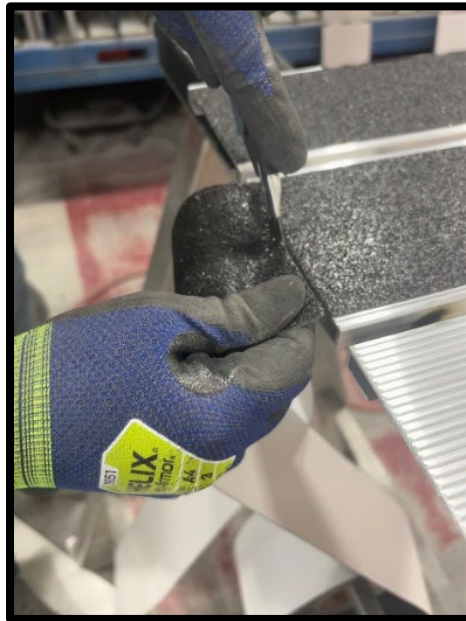
4. Drying

- a. Allow the surface to fully dry before applying the tape.
i. A compressed air hose may be used to assist with drying.



5. Apply Tape

- a. Peel off the adhesive backing and apply Safety Tack to a clean, dry, wax-free, and oil-free surface. At the start, allow a small excess lip to be folder over as this will help the tape stick when pulling it taut and laying it down the rest of the way.



6. Trim Edges

- a. Trim the tape edges flush with the end of the panel using the utility knife.



7. Secure Adhesion

- a. Use a rubber roller to firmly press and smooth the tape, ensure full contact with the surface. Roll starting from the folded edge where tape install began and rolled out down the panel.

If any additional support is needed, please open a technical support incident on www.pierceparts.com.