



Service Bulletin

Bulletin No.: PIP6117

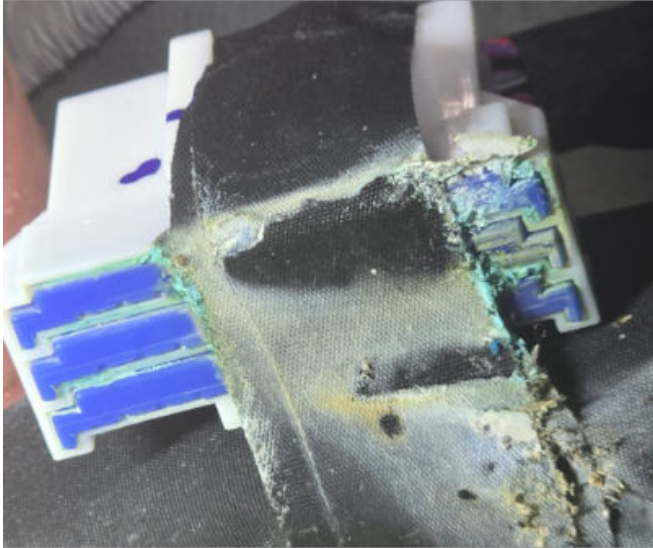
Date: May, 2026

PRELIMINARY INFORMATION

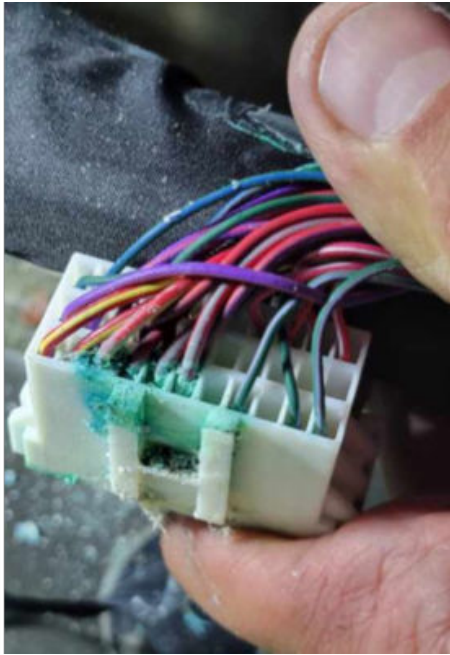
Subject: Diagnostic Tip - SES MIL /No Start / BECM DTCs due to Corroded Splice Pack

Brand:	Model:	Model Year:		VIN:		Engine:	Transmission:
		from	to	from	to		
GMC	Hummer EV	2022-2026		ALL	ALL	ALL	ALL
GMC	Hummer EV SUV	2024-2026		ALL	ALL	ALL	ALL

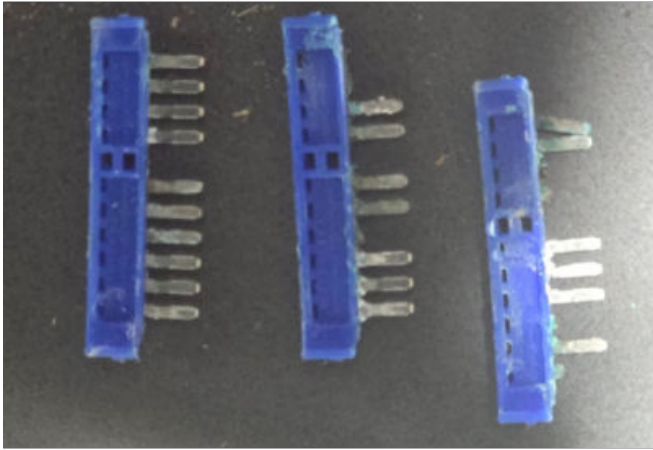
Involved Region or Country	North America
Condition	<p>Customers may experience a MIL (Malfunction Indicator Lamp), a "Service High Voltage" warning message, inability to charge the HV battery, a loss of propulsion or a no start condition due to corrosion of the JX310 splice pack.</p> <p>This corrosion can lead to erratic vehicle behavior including various components being unable to communicate with the BECM over the LIN bus, an inability to control contactors, a loss of communication with the interface modules internal to the high voltage battery, and possibly other symptoms.</p> <p>Dealers may find one or all of the following DTC's (Diagnostic Trouble Codes) in various combinations as CURRENT or HISTORY during a vehicle wide DTC scan: P0AA5, P0AE3, P0C78, U01D6, U100B, U1522, U3505, U3588, U2426, U2427.</p> <p>Dealers may find one or all of the following DTC's (Diagnostic Trouble Codes) in various combinations as CURRENT or HISTORY during a vehicle wide DTC scan: P0AA5, P0AE3, P0C78, U01D6, U100B, U1522, U3505, U3588, U2426, U2427.</p> <p>Water intrusion into the cab of the vehicle can cause corrosion at JX310.</p> <p>An example would be an evaporator drain tube out of position/ draining into the cabin instead of the vehicle's exterior.</p>
Cause	<p>Corrosion at JX310 can lead to circuit malfunctions including the potential for high resistance, an open circuit or excessive voltage drop specifically to the K16 BECM (Battery Energy Control Module) or to the A28 Hybrid/Electric Vehicle Battery Disconnect Relay internal to the A4 Hybrid/ Electric Vehicle Battery Pack.</p>



7143850



7143851



7143852



7143853

Correction

If a vehicle covered by this PI is exhibiting similar symptoms, check for signs of moisture in the cabin of the vehicle (past or present).

If signs of moisture are apparent, inspect JX310 for signs of corrosion or terminal damage and repair JX310 as necessary while also correcting the source of the moisture intrusion.

If no signs of moisture are present, and corrosion is not suspected, proceed with diagnostics according to SI.

Version	1
Modified	05/27/2026 - Created on

