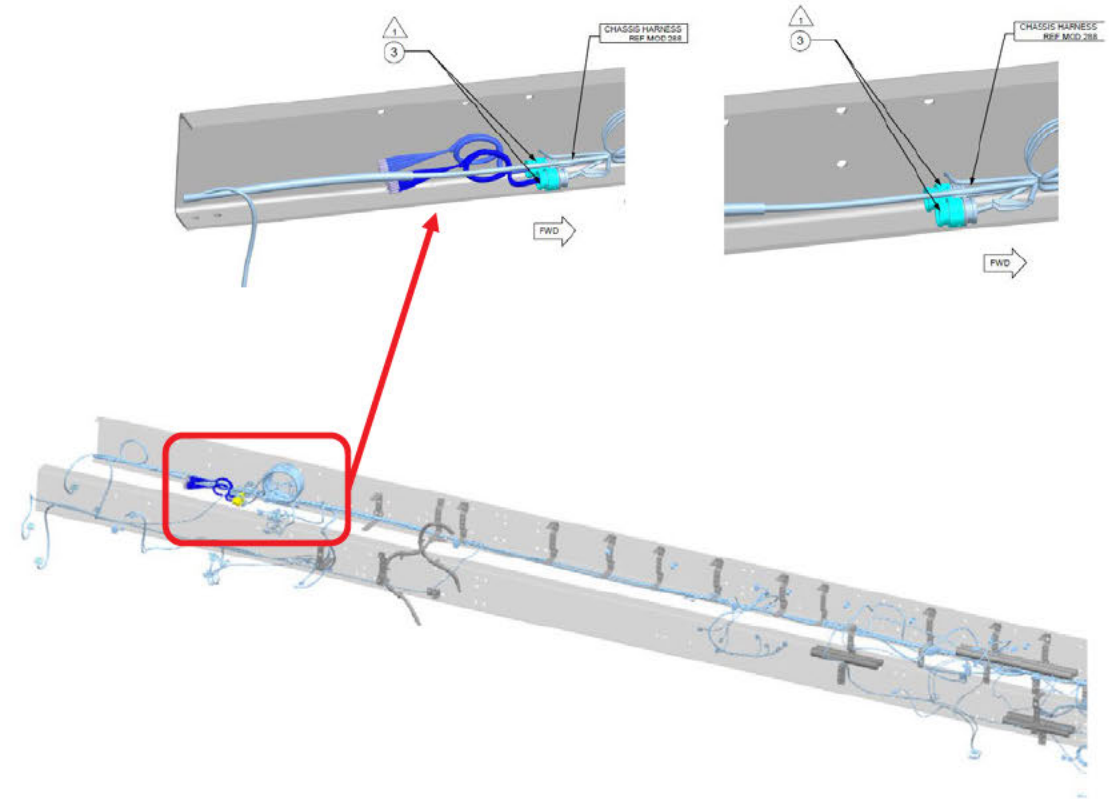


QuickFit Body Lighting Extension

What is it?

This new options updates how Western Star implements the EOF Body Lighting Connector (353) and EOF Hardwired Switch (329). Previously, selecting these codes meant the truck arrived with a loose jumper harness placed inside the cab for the bodybuilder to route and install. With this enhancement, Western Star now delivers the wiring and harnesses fully routed to the end of frame, complete with the appropriate brackets installed at the factory.

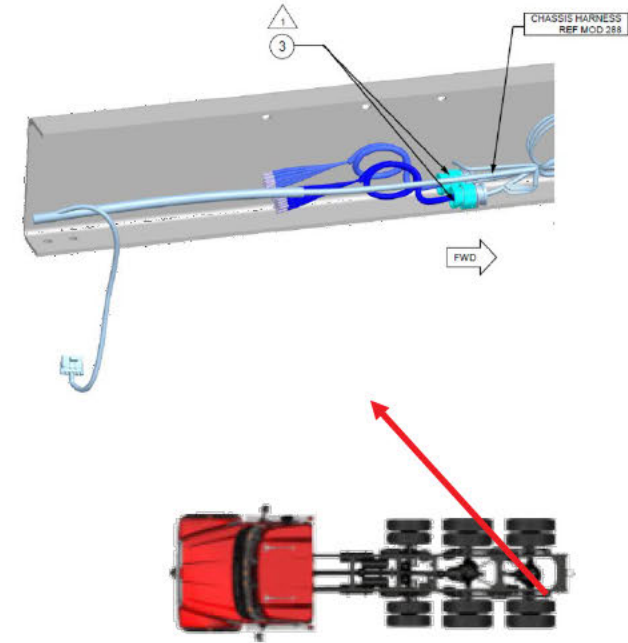


QuickFit Body Lighting Extension

Why is it Important?

By providing factory-routed wiring directly to the end of frame, this option significantly reduces upfit time and eliminates the extra steps of locating, routing, and securing loose harnesses. Bodybuilders can connect body lighting quickly and confidently, improving installation quality and reducing opportunities for wiring errors.

This is especially valuable for construction and utility bodies that require lighting at the rear of the truck, but it benefits virtually any application. Dealers gain a more upfit-friendly spec, and operators receive trucks that are delivered faster, with cleaner, more reliable electrical integration.



QuickFit Body Lighting Extension

Key Features:

Western Star now delivers EOF lighting wiring fully routed to the end of frame, eliminating loose jumper harnesses and simplifying body-builder installation.

Resources:

Affected models: *Western Star 47X & 49X*

Data Codes:

353-075	QUICKFIT BODY LIGHTING CONNECTOR AT END OF FRAME, WITH CAP	
353-076	QUICKFIT BODY LIGHTING CONNECTOR AT END OF FRAME, WITH BLUNTCUTS	

Compatibility Considerations: *See Module 329 for extra in-cab switches routed to the End-Of-Frame (EOF)*

***See SpecPro for latest compatibility information**

Change Log

Date	Summary of Major Changes
4/28/2026	V1 Created

QuickFit Body Lighting Extension

What is it?

These new options updates how Western Star implements the EOF Body Lighting Connector (353) and EOF Hardwired Switch (329). Previously, selecting these codes meant the truck arrived with a loose jumper harness placed inside the cab for the bodybuilder to route and install. With this enhancement, Western Star now delivers the wiring and harnesses fully routed to the end of frame, complete with the appropriate brackets installed at the factory.

Why is it Important?

By providing factory-routed wiring directly to the end of frame, this option significantly reduces upfit time and eliminates the extra steps of locating, routing, and securing loose harnesses. Bodybuilders can connect body lighting quickly and confidently, improving installation quality and reducing opportunities for wiring errors.

This is especially valuable for construction and utility bodies that require lighting at the rear of the truck, but it benefits virtually any application. Dealers gain a more upfit-friendly spec, and operators receive trucks that are delivered faster, with cleaner, more reliable electrical integration.

