



# Service Bulletin

Bulletin No.: PIP5810D

Date: May, 2026

## PRELIMINARY INFORMATION

**Subject: Transfer Case Input Seal Installation**

Brand:	Model:	Model Year:		VIN:		Engine:	Transmission:
		from	to	from	to		
Chevrolet	Silverado 2500 HD/ 3500 HD	2020 - 2026		All	All	All	MGM MGU MKM
GMC	Sierra 2500 HD/3500 HD	2020 - 2026		All	All	All	MGM MGU MKM

<b>Involved Region or Country</b>	North America
<b>Additional Options (RPO)</b>	NQF, NQH
<b>Condition</b>	Repeat transfer case input seal leak.
<b>Cause</b>	New seal installer available.

### Correction

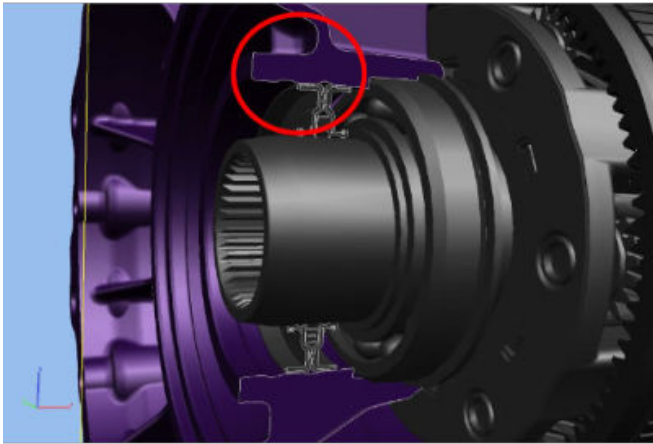
Seals installed in second design transfer cases are installed using GM-53018 which as of May 2026 was deemed essential to all dealers and will be shipped as stock is available.

Failure to use the correct seal installer may result in a repeat leak.

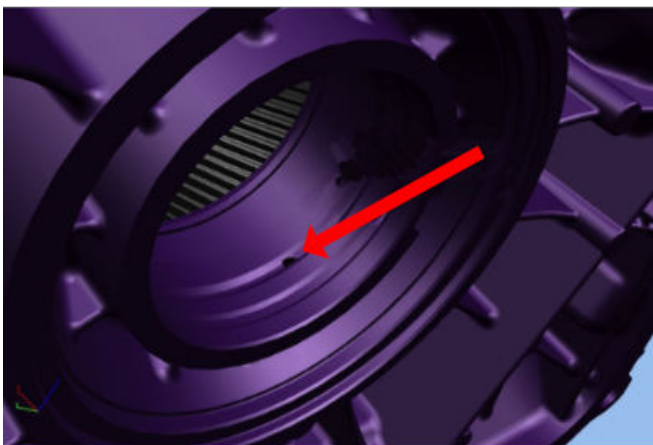
Seal installation depth is critical when replacing the transfer case input seal.

There is a gap around the outer portion of the seal that needs to be centered over a weep hole in the case.

Weep hole is drilled in the center of a groove machined into the case.



5845636



5845634

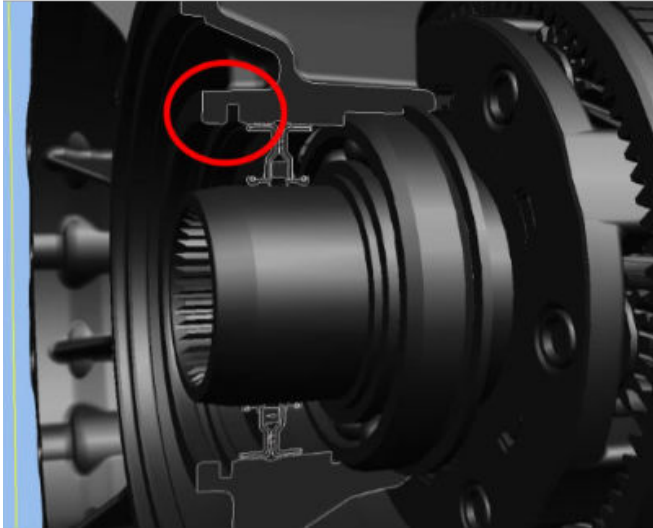
There are 2 design transfer case front case halves and the seals install at different depths between design 1 and 2.

To identify design level look for a machined groove where the seal is installed (Red circles below).

If there is a defined machined groove in the case then it is a first design case.

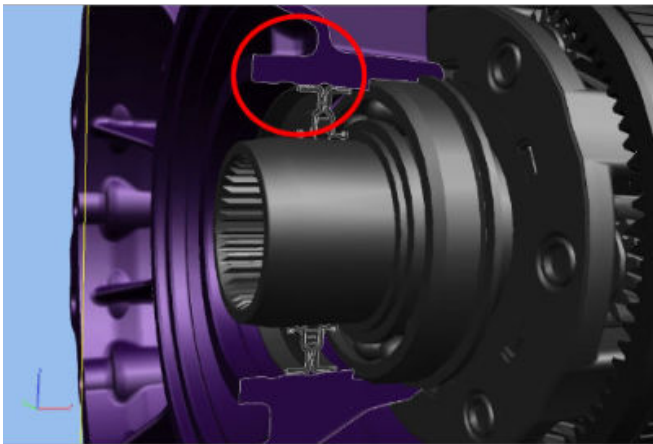
If there is not a defined groove machined into the case then it is second design.

First Design



5845638

## Second Design



5845636

For first design transfer case see Transfer Case Assemble (VIN LF263576 and Earlier (with MGM or MGU)) in 2020 model year Transfer case off vehicle repair instructions. Seal installer DT-53017 (GM-53017)

For second design use either Transfer Case Assemble (VIN LF263577 and Later (with MGM or MGU)) in 2020 model year off vehicle repair instructions or the year of the vehicle you are working on. DT-53018 (GM-53018)

Use of incorrect tool will create a repeat leak as the seal may not be at the correct depth or may not be installed straight.

## Warranty Information

No associated or special labor operation, please use the labor operation for the repair being performed, this document was created to ensure correct depth in case of a seal replacement.

### Other Information

<b>Version</b>	5
<b>Modified</b>	05/29/2021 - Created on 09/19/2022 - Added model years 2022 and 2023. 01/29/2024 - Added RPO MKM and model year 2024. 05/05/2025 – Updated Models and Correction. 05/18/2026 – Updated Models and Correction.

