



INSTRUCTION TO SERVICE

ITS61748		05/22/2026
SECTION:	470-Destination Signs	
SUBJECT:	Torque mounting hardware on front destination sign	
ISSUE:	Hardware is not torqued on front destination sign.	
SUMMARY:	Torque hardware to 60 IN/LBS.	

ITS61748

Ref. NHTSA Recall No.	Ref. Transport Canada Recall No.

THIS ITS DOCUMENT SHOULD BE RETAINED AND REFERRED TO FOR FUTURE MAINTENANCE UNTIL THE NEW FLYER PARTS AND/OR SERVICE MANUAL IS UPDATED TO REFLECT WORK DONE AS A RESULT OF THIS DOCUMENT. ENSURE THAT THIS DOCUMENT IS AVAILABLE FOR PARTS AND MAINTENANCE STAFF GOING FORWARD.

PROCEDURE:

1. Set Park brake.
2. Turn the main battery disconnect switch to the “OFF” position.
3. Locate the front destination sign in the upper front compartment in the bus. For steps 3 & 4, see Figure 1.
4. Loosen off side mounted bolts on the front destination sign. Re-tighten hardware and torque to 60 IN/LBS.
Repeat application on the 3 remaining bolts.

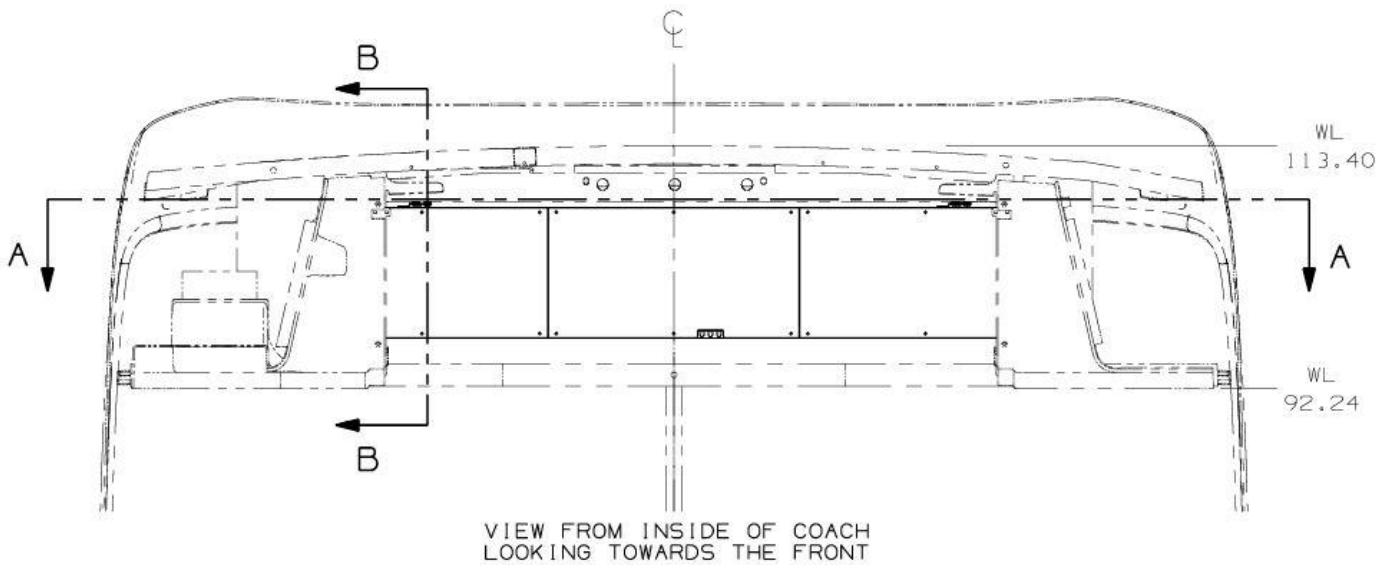
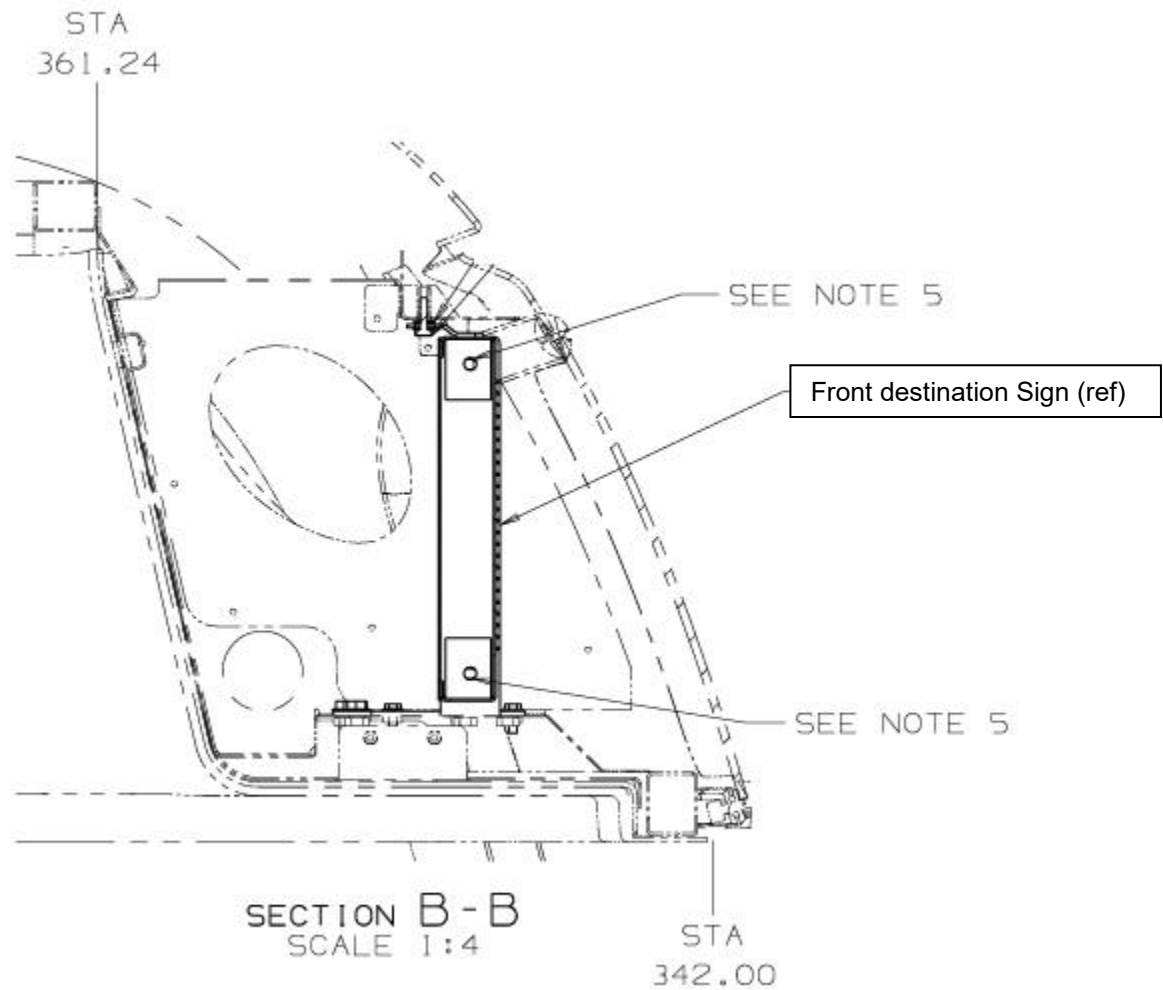


Figure 1: Location of the front destination sign



Note:

5) TORQUE VENDOR SUPPLIED HARDWARE TO 60 IN/LBS

Figure 1a: Torque hardware as per note 5.

5. Remove all tools and debris from work area to return coach to service.
6. Turn the main battery disconnect switch to the "ON" position.



LABOUR ESTIMATE				
	Operation	Number of Technician(s)	Hours	Labor Time T X HR
1	Torque hardware on sides of front destination sign.	1	0.25	0.25

PARTS REQUIRED					
Item	Part Number	Description	Qty. per Coach	Units	Notes