

Published
 List ID: 112180

Message

Target

Options

Approve / Deny

Clone

Edit Request

Communication

Publish Dates

- The Start Date is when the communication will be visible to dealers in DCMail.
- The End Date is when the communication will no longer be visible to dealers in DCMail.
- NOTE: End Dates are limited to one (1) year from the Start Date. If you wish to lengthen the End Date, you may extend it at any time after publish.

Start Date 5/15/2026 7:00 AM

End Date 6/5/2026 11:55 PM

Note: All times are EST

Title

BEZEL - OVERHEAD CONSOLE

What will display in DCMail for dealers to click on.
 TIP: Keep titles short, but specific and eye catching.

Flagged for Reporting Agency

NO

Communication Summary

BEZEL - OVERHEAD CONSOLE

To increase search capability and visibility of your communication, please provide a brief summary or your message (140 characters max). This will display when dealers hover over your communication.

Message

The body of your communication. Use the formatting toolbar above to format text, insert tables, pictures, and/or hyperlinks.

Click Edit > Attach File to attach documents

IMPORTANT NOTES:

- Pictures must have unique file names. If you receive an error message when uploading a picture, it means the file name has already been chosen. Simply change your file name and try again.
- Communications cannot exceed more than 12MB; this includes images and text, and all attachments.

You have been identified as either having stock on hand or in transit to your dealership.

Please check and return suspect stock of part numbers: **7BG201X8AB**. Please refer to QIR attachment.

Please return all parts back to your facing depot using **Return Code 02**, before 5th June 2026.

For replacement place new orders.

Return any open orders in process too. Direct questions regarding returns via email to mopardmail@stellantis.com



Quality Inspection Request

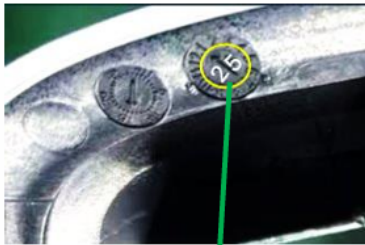
BEZEL - OVERHEAD CONSOLE

Suspect Part Identification

15-May-2026

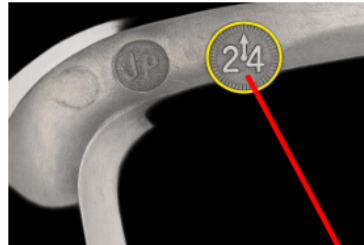
Part Numbers: 7BG201X8AB

Correct Part



Good parts- Parts with clock digit 25 or 26 are good parts

Suspect Part



Suspect Parts – Parts with **clock digits other than 25 or 26** are suspect and must be returned.