

<b>REFERENCE:</b>	<b>TSB:</b> 08-200-26 <b>GROUP:</b> 08 - Electrical	<b>Date:</b>	May 5, 2026	<b>REVISION:</b>	—
<b>VEHICLES AFFECTED:</b>	<p>2023 - 2026 (GC) Alfa Romeo Tonale 2023 - 2026 (GG) Dodge Hornet</p> <p>This bulletin applies to GC vehicles equipped with Cluster 12.3" Full TFT Color Display (Sales Code JAN) and GG vehicles equipped with 12.3" Digital Instrument Cluster (Sales Code JAN).</p>	<b>MARKET APPLICABILITY:</b>			
		<input checked="" type="checkbox"/> NA <input type="checkbox"/> MEA <input type="checkbox"/> SA <input type="checkbox"/> IAP <input type="checkbox"/> EE <input type="checkbox"/> CH			
<b>CUSTOMER SYMPTOM:</b>	<p><b>Customers may experience the following:</b></p> <ul style="list-style-type: none"> <li>• IPC content missing, display abnormal or screen blank.</li> </ul>				
<b>CAUSE:</b>	<b>Understanding IPC Functionality and Operation</b>				

**DISCUSSION:**

This Information Only bulletin contains information helpful or useful for technicians in diagnosing. In Relax Mode the IPC only keeps regulatory-required content visible. The IPC is characterized by less information density and no speedometer / tachometer dials. At times, a customer may accidentally enter Relax Mode by pressing the hard button on the steering column stalk. Complaints of abnormal IPC behavior, content missing or blank screen has been reported, because the customer does not understand relax mode and does not know how to switch back to Classic / Evolved Mode.

The technician will need to toggle the button on the steering column stalk to verify IPC responsiveness (Relax -> Classic -> Evolved->). Measure the voltage of battery, recharge the battery if needed. Adjust dimming roller, verify if the brightness of IPC screen goes up or down.



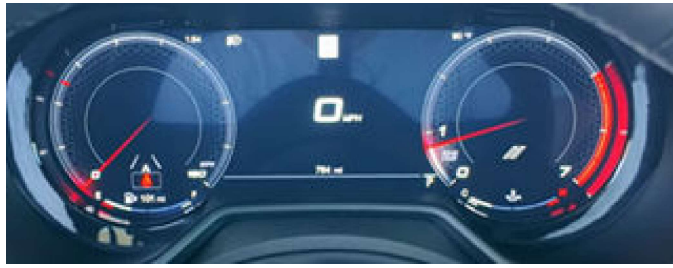
**Fig. 1**

Classic Mode / Evolved Mode / Relax Mode



**Fig. 2**

Dimming Roller



**Fig. 3**  
Classic Mode Example



**Fig. 4**  
Evolved Mode Example



**Fig. 5**  
Relax Mode Example

For any other issues or concerns normal diagnostics should be performed.

**POLICY:**

Information Only.