



SIB 52 19 23

SECOND ROW 60/40 SEAT RAIL FLEX CABLE REPLACEMENT

2026-05-04

This Service Information Bulletin (Revision 4) replaces SI B52 19 23 **dated January 2026**.

What's New:

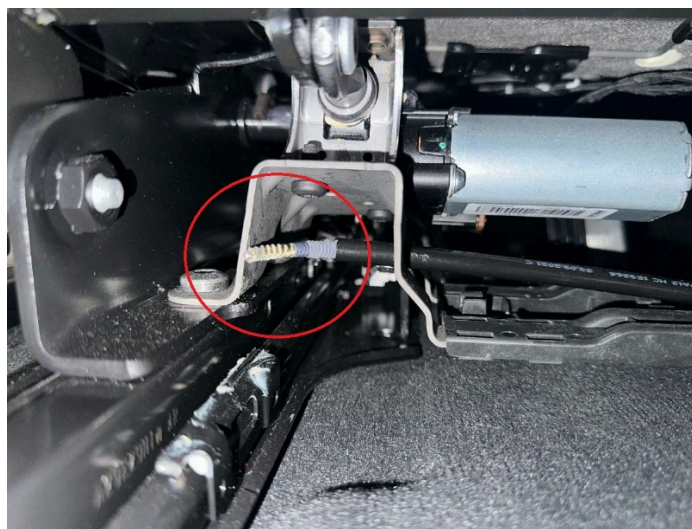
- Parts Section – Part Number 52 20 5 A9C 055 Cable Lengths added

<input type="checkbox"/>	THIS REPAIR IS MOBILE FRIENDLY
<input type="checkbox"/>	THIS REPAIR IS REMOTE SOFTWARE UPGRADE (RSU) FRIENDLY

MODEL

E-Series	Model Description	Affected Option Code
G07	X7 Sports Activity Vehicle	7-passenger vehicle equipped with second row 60% / 40% split seat

SITUATION



In vehicles equipped with the second row 60% / 40% split seat, the flex cable assembly can come out of the seat rail mechanism (circled). This stops the forwards and backwards travel of the seat.

CAUSE

Something has mechanically jammed the seat movement on one or both sides of the seat.

See how an obstruction can cause the flex cable to pop loose.

See VIDEO [BV52 06 24 Flex Cable Pops Out](#)

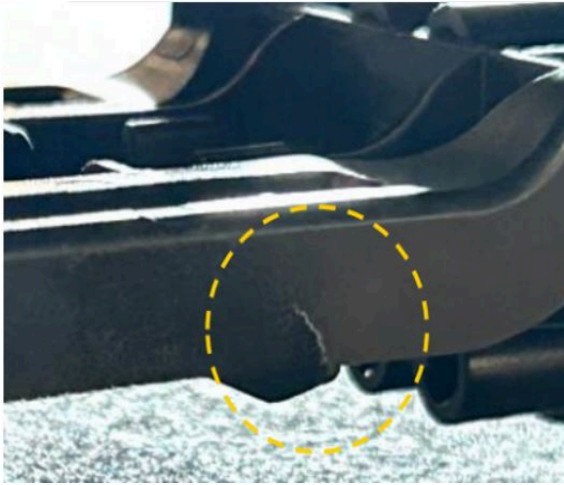
CORRECTION

Locate and remove the foreign object, if still present.

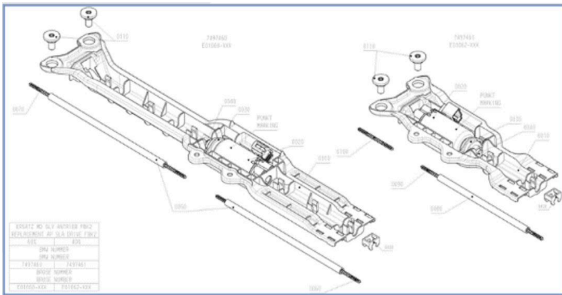
Determine the extent of the damage per the various Situations below, then make the appropriate repair. There are numerous parts kits available, so you don't have to replace the entire seat rail assembly.

SITUATION 1

The plastic SLV Motor Carrier tray is broken.



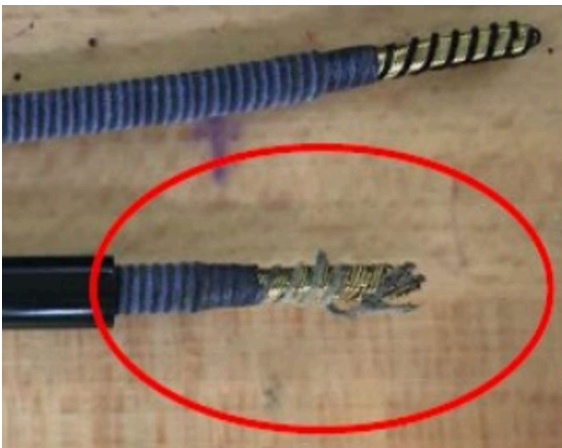
The plastic SLV Motor Carrier tray is available with flex shaft kits.



SITUATION 2

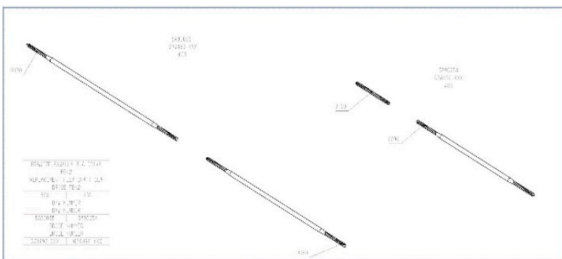
The flex cable is damaged.

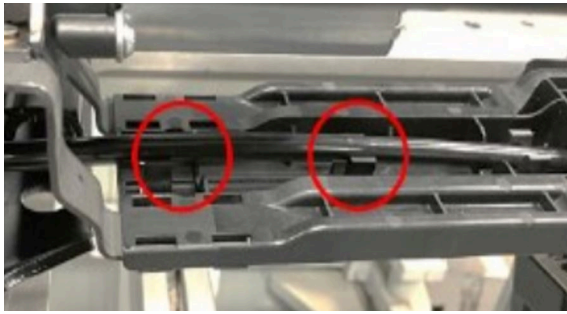
If the flex cable end has been damaged, do not reuse it.



Replace only the damaged flex cable assembly instead of entire seat rail assembly. Install a new locking clip as per situation 3.

NOTE: The locking clip will be available in July 2025. **Until then reuse the existing locking clip.**





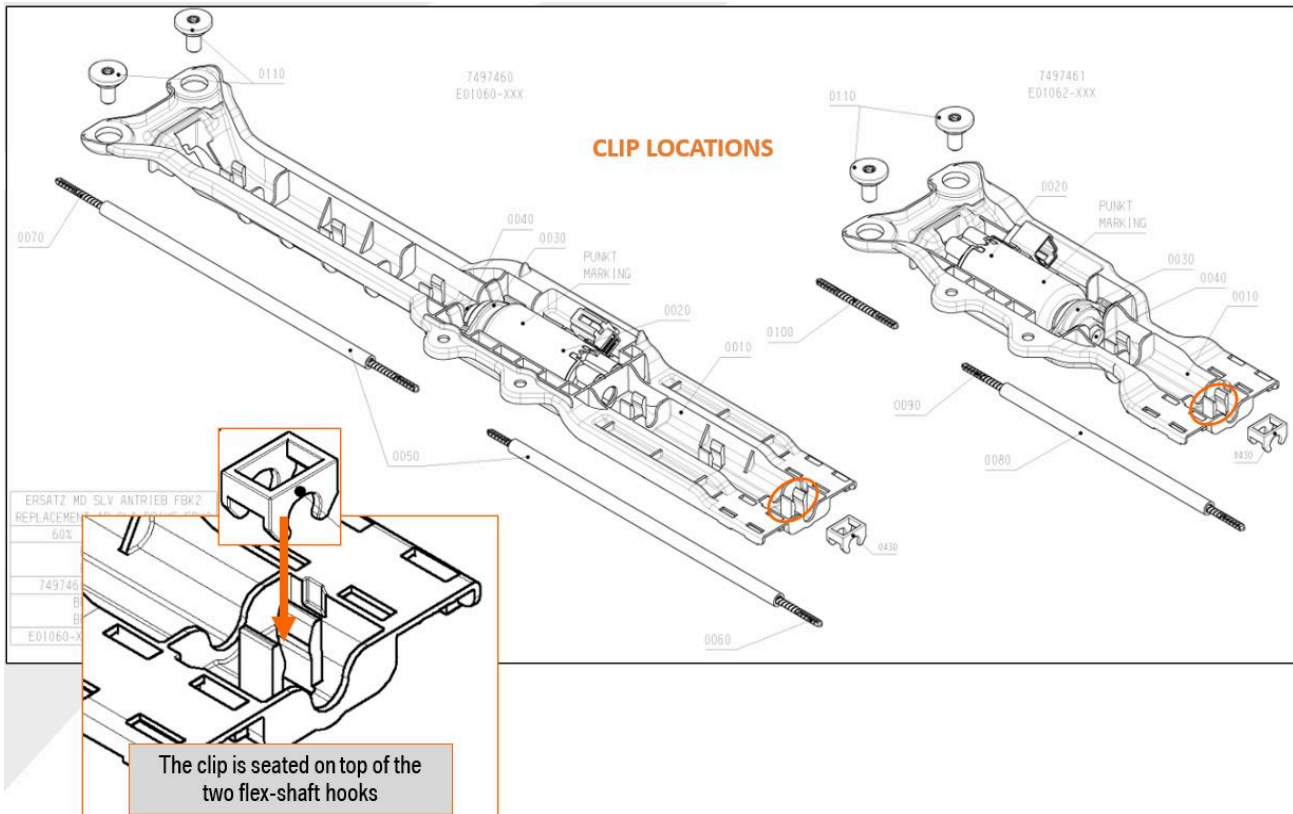
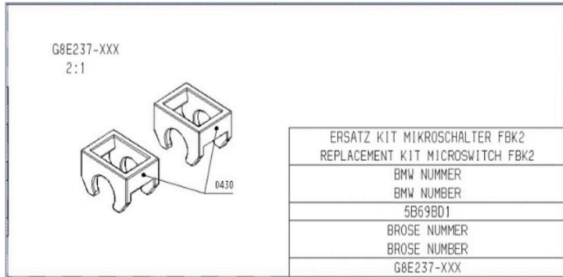
SITUATION 3

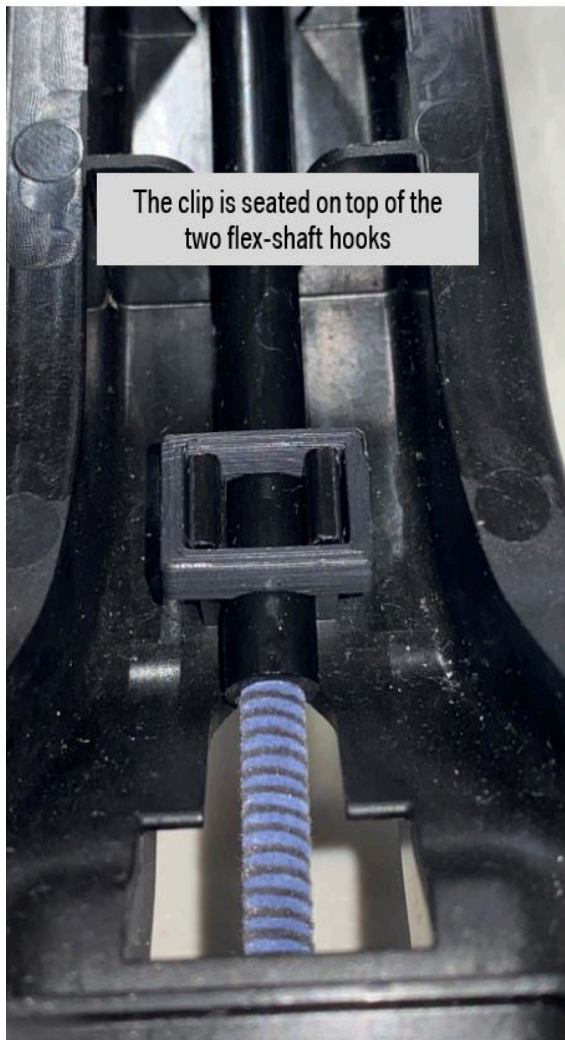
The Flex Cable has popped loose from the U-shaped flex shaft hooks. If the flex cable end is not damaged, check the U-shaped hooks on the plastic carrier.

- If the U-shaped hooks are damaged, replace SLV Motor Carrier tray (see situation 1)
- If the U-shaped hooks are not damaged, reinstall flex cable into U-shaped hooks and replace locking clip

The locking clip is shown in ETK to be used in conjuncture with flex cable repairs.

NOTE: The locking clip will be available in July 2025. **Until then reuse the existing locking clip.**





The clip is seated on top of the two flex-shaft hooks

NOTE: If this locking clip has come loose due to the cable popping free, it should be replaced.

PROCEDURE

1- It is recommended that this repair be done with the seat still assembled in the vehicle, though there is limited access and visibility.

See VIDEO [BV52 07 24 Flex Cable Install](#)

ONLY IF needed for greater access and visibility:

- the seat can be removed from the vehicle.
- the seat cover can be removed as per Repair Instructions:

Replacing the left seat surface cover **52 25 212** for the 60% driver's second row seat

Or

Replacing the right seat surface cover **52 25 214** for the 40% passenger second row seat

2- If damage is found to the Plastic SLV Motor Carrier tray, it should be replaced.

3- See procedure attachment for instructions on how to replace these cables on the 60% driver's second row seat. The procedure is similar for the 40% seat.

NOTE: The attached procedure shows replacement of one of the flex cables both with and without electric motor removal.

- **To replace the long flex cable**, you do not need to remove the electric motor from the carrier; just pivot it up on one side.
- **To replace the short flex cable** the electric motor may have to be removed from the carrier.
- The locking clip, as shown in ETK, is to be replaced in conjuncture with flex cable repairs.
NOTE: The locking clip will be available in July 2025. **Until then reuse the existing locking clip.**
- When replacing the flex cable(s) you must time the seat rails from side to side.
A 'helicopter' type noise occurs when the seat rails are out of timing.
Reference procedure attachment for instructions on timing the seat rails.

4- If the seat is removed from the vehicle, the seat mounting bolts must be replaced and torqued in sequence. See Service Bulletin [B52 23 19](#).

5- These networked seats are described in detail in Service Bulletin [B52 23 19](#) which contains information on all relevant seat bulletins.

PARTS INFORMATION

To determine the part numbers that apply to the specific vehicle being repaired, enter the VIN/chassis number into either ETK or AIR, this will consider the specific equipment and/or options that are fitted to the vehicle.

Part Number	Description	Quantity
52 20 5 A9C 054	Kit flexible shafts (40% seat passenger rear)	1 if needed
52 20 5 A9C 055	Kit flexible shafts (60% seat driver's rear) Cables should be 261mm and 283mm in length	1 if needed
52 20 7497460	Drive, Longitudinal seat adjustment (60%) includes SLV Motor Carrier tray	1 if needed
52 20 7497461	Drive, Longitudinal seat adjustment (40%) includes SLV Motor Carrier tray	1 if needed
52 20 5B69BD1	Mounting kit clips	1 if needed
And if needed:		
07 14 7424979	(Seat mounting) Hexagon screw with flange	4

CLAIM INFORMATION

This Service Information Bulletin provides technical, diagnosis, and repair-related information.

Damage and/or issues caused by outside influences/foreign objects are not covered under the BMW limited warranties.

FEEDBACK REGARDING THIS BULLETIN

Technical Feedback	To submit feedback for the technical topic of this bulletin: Submit your feedback in the rating box at the top of this bulletin
Warranty Feedback	To submit feedback for the CLAIMS section of this bulletin: Submit an IDS ticket to the Warranty Department, or use the chat available in the Warranty Documentation Portal
Parts Feedback	To submit feedback for the PARTS section of this bulletin: Submit an IDS ticket to the Parts Department

Supporting Materials

[picture_as_pdf Attachment B52 19 23 FLEX CABLE RR.pdf](#)

Videos

[52 06 24](#)

[52 07 24](#)



FLEX CABLE REPLACEMENT, SLV MOTOR, 60% SEAT

G07 (X7) SECOND ROW 60/40 SEAT RAIL

Technical Service

NOTE: This repair can be done with the seat still assembled in the vehicle but there is limited access and visibility.

If needed for greater access and visibility:

- the seat coverings can be removed
- the seat can be removed from the vehicle.

Pictures show the seat removed from vehicle and stripped of coverings for clarity.

1. Place seat bottom cushion raised in the rear and backrest straight up for access as shown.



2. Locate problem area of flex cable drive(s)

In this example the 60% seat inboard flex cable has come out of the seat rail gearbox. **The locking clip has come loose.**

This will stop the seat from moving forwards and backwards on the rails.



3. Measure the misalignment on both rails and compare how much the difference is. Note: Do the same process for the right side and the left side.

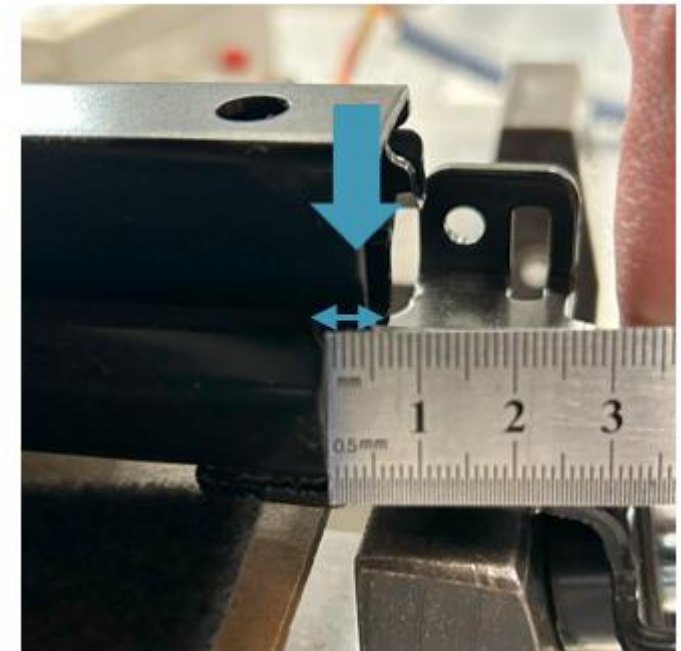
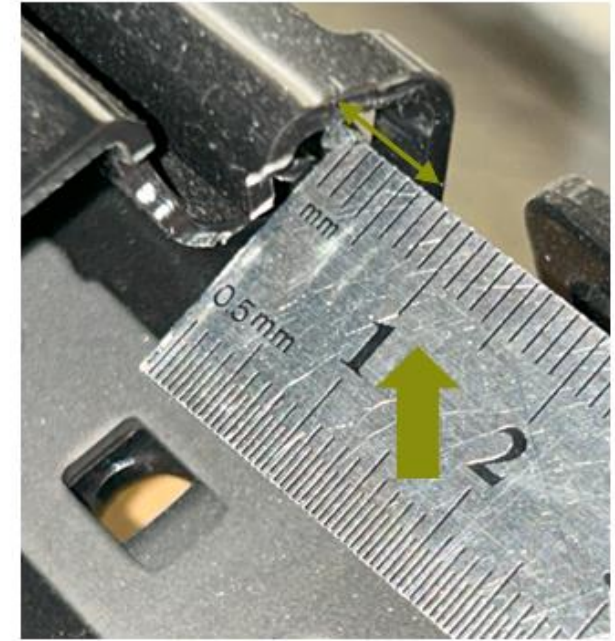
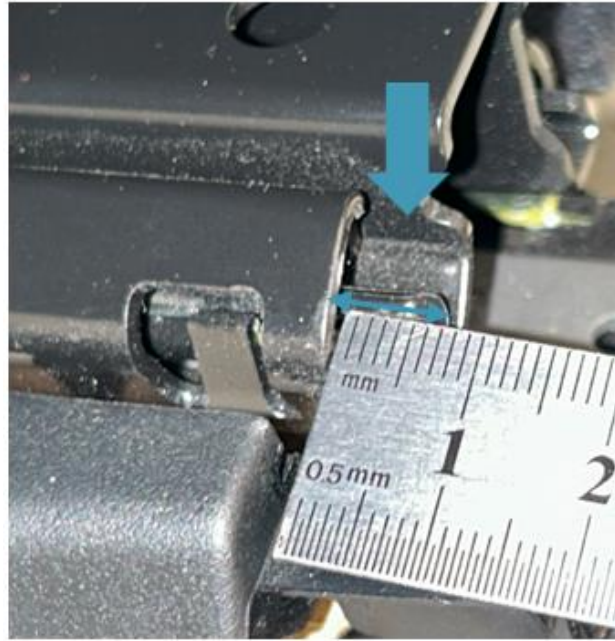
Left Rail: 8 mm outside Frame

Right rail: 6 mm Inside Frame

Considering that the right flex shaft is out of position, the left one must move the necessary distance so that it is aligned with the right one.

After aligning rails side to side remeasure before flex cable installation.

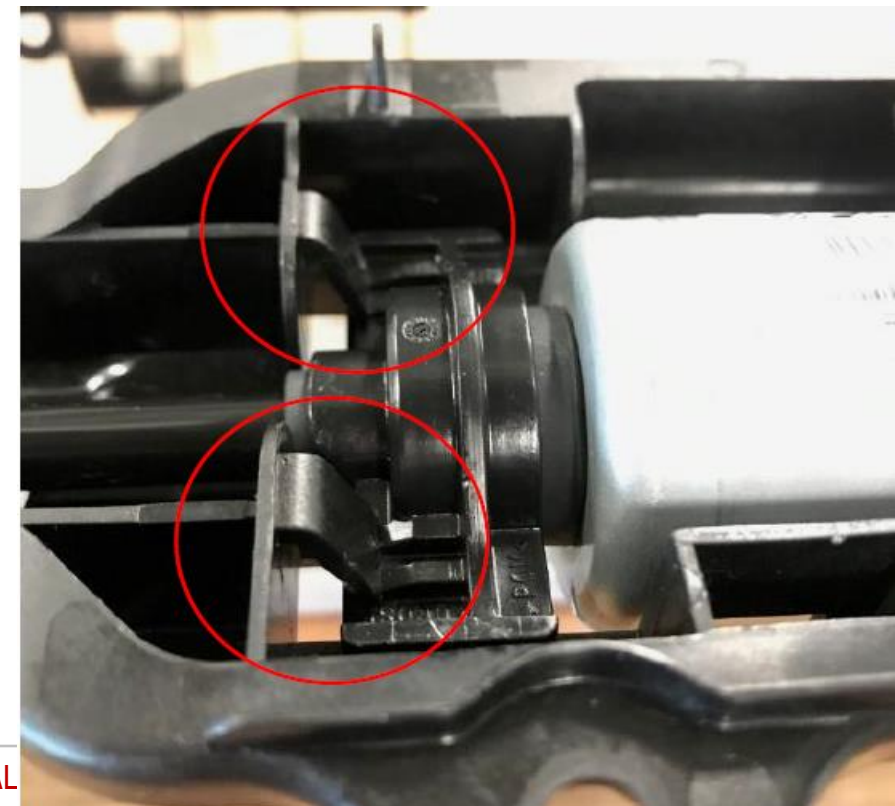
Now both rails are at 4 mm



4. To make this repair the inboard flex cable and cover tube needs to be completely removed from the motor carrier tray and replaced. This will be shown in the next steps.



5. The motor for forward/backwards adjustment (SLV) must be removed next. Use flathead screwdrivers to carefully disengage the two motor carrier spring clips to unsecure. Remove motor retainer/cover and one side flex cable. See next steps for detail



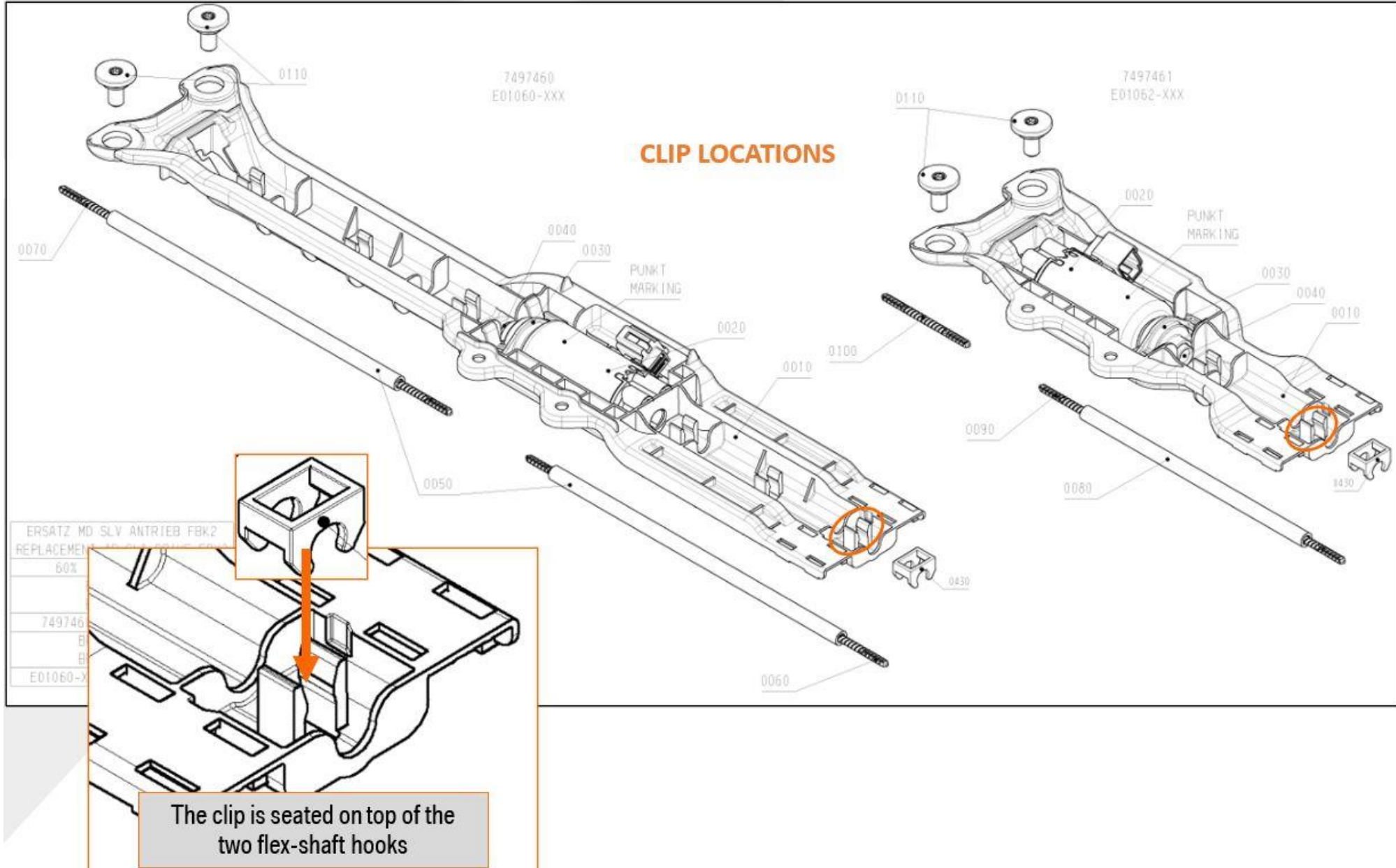
6. Use flathead screwdrivers to carefully disengage one of the motor carrier spring clips. That allows you to pivot the motor upwards without removing the opposite side flex cable.



7. Remove motor retainer/cover.

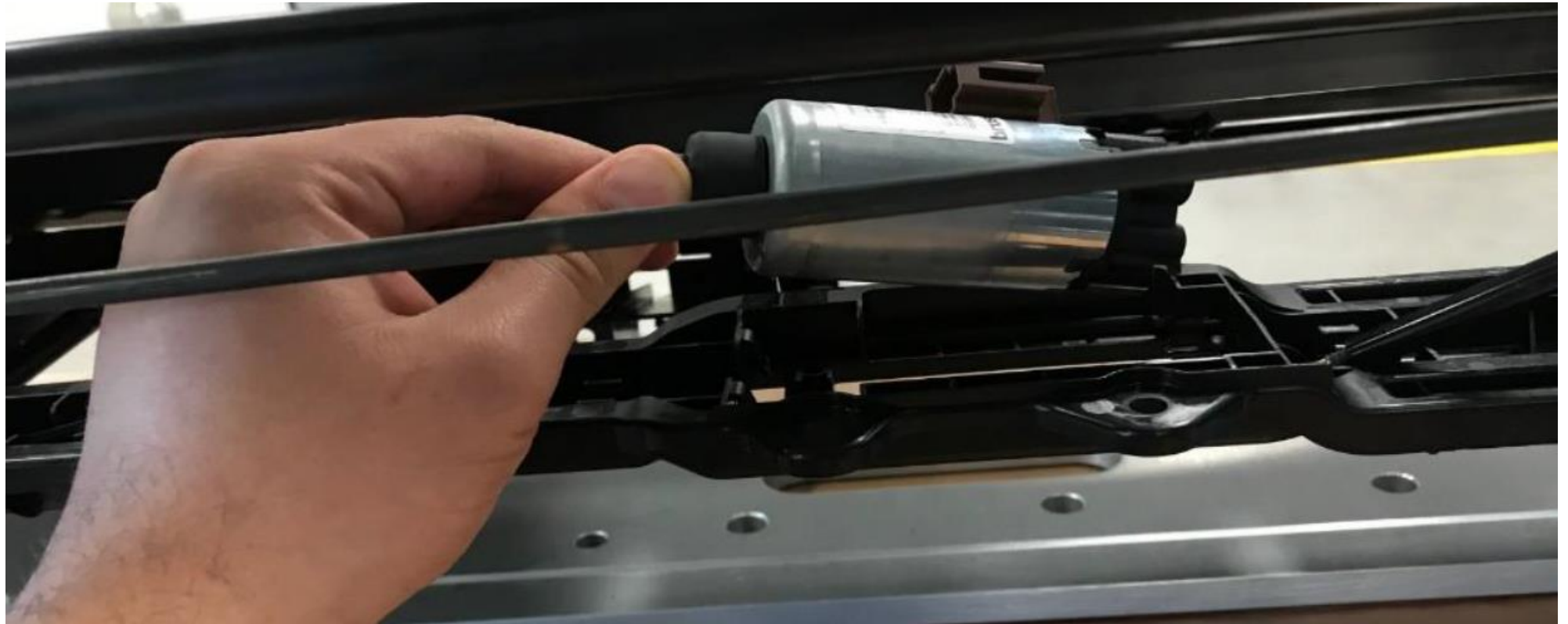


8. Remove and replace the locking clip if you have to replace/access the flex cable.



9. Only remove motor if you have to replace/access the short cable.

For our one long cable repair the motor can be left held in place by one of the motor carrier spring clips on the side of the cable you are not replacing.



10. Reinstall the inboard side flex cable and cover tube into the motor carrier clips.



11. Insert the flex cable into the motor and loosely reseat motor into motor carrier tray.



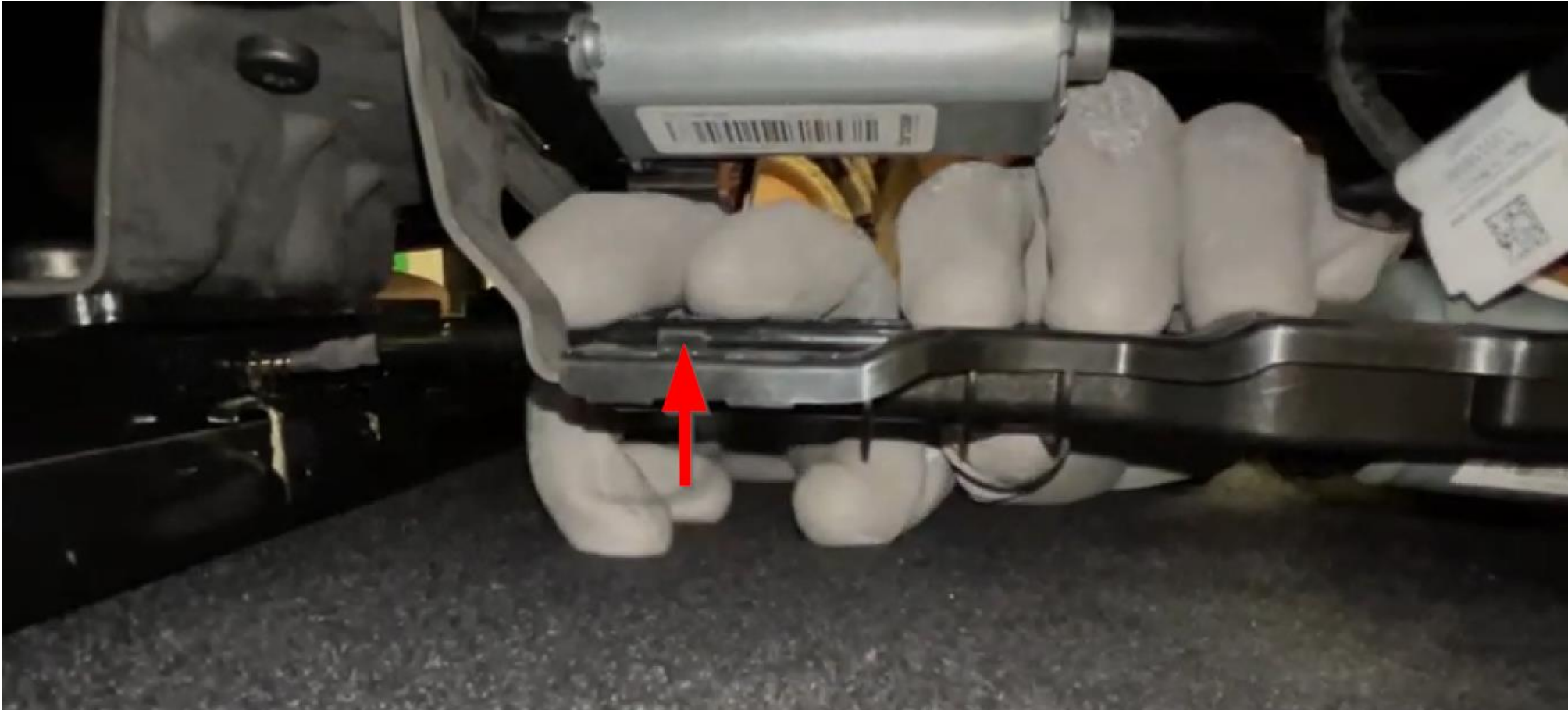
12. Move flex cable in the inboard direction so it is properly seated into the rail gearbox.



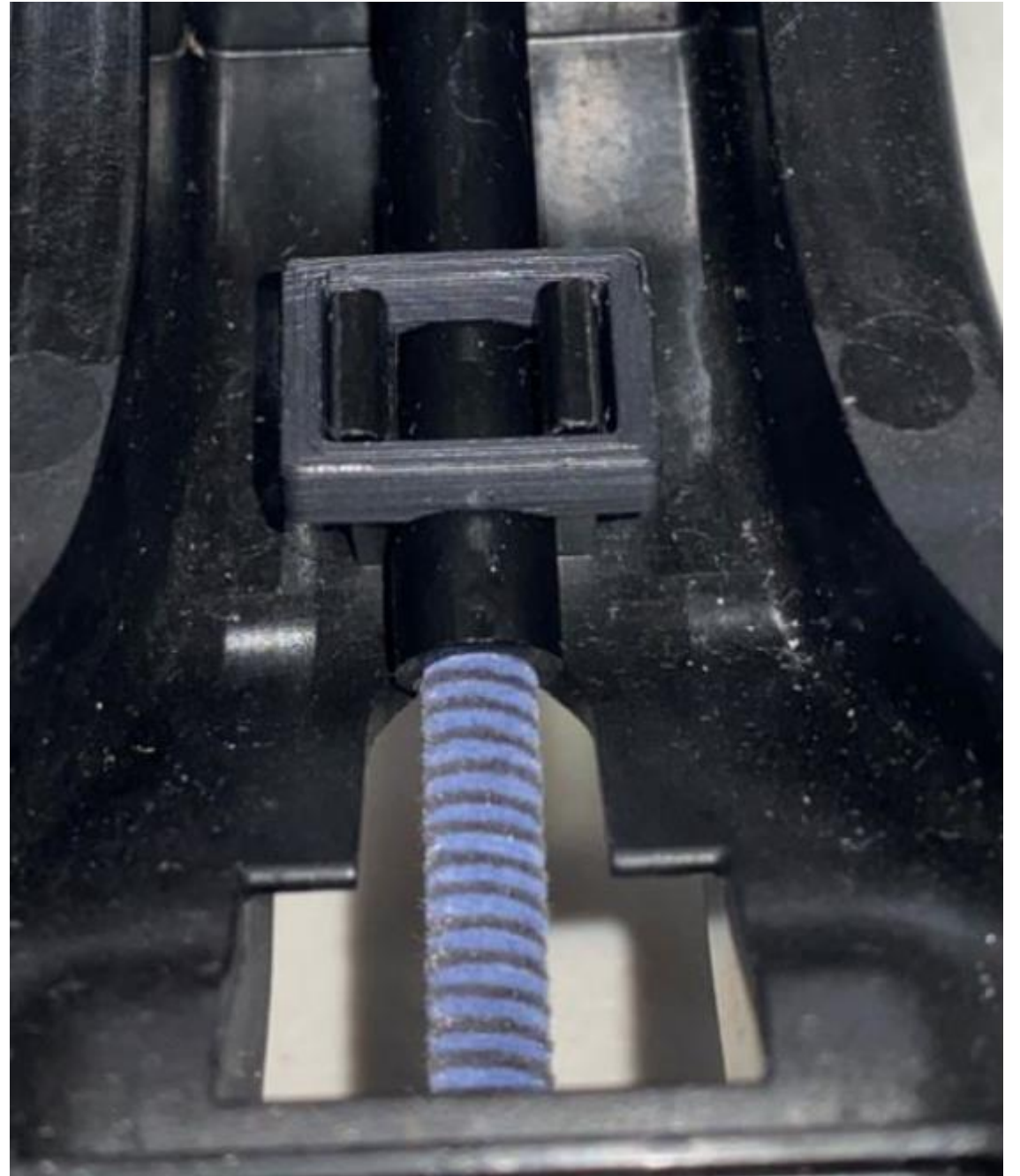
13. Connect outboard flex cable into motor.



14. Make sure the flex shaft is fully inserted into the electric motor and then push the flex shaft down into the plastic clips holding it in place.



15. Install a new Lock clip on top of the two flex shaft hooks attached to the motor carrier tray. The Lock clip snaps into place to retain the flex cable.



16. Once both flex cables are properly secured and aligned, use plastic cover piece to resecure motor. Make sure both spring clips are engaged.



17. Test seat operation multiple times fully forwards and fully backwards on rails to ensure installation was correct and flex cables correctly engaged the rail gearboxes.

