

Turn off LP Gas at LPG Tank(s). Disconnect the vehicles' battery Positive and Negative, disconnect any House battery(s) Positive and Negative, if equipped with a generator ensure it is off and lastly, ensure the vehicle is disconnected from shore power. Block any tires/wheels to prevent the vehicle from rolling. Failure to do so may result in electrocution, fire or other personal injury, property damage and/or death.

### **TRUMA COMBI - INSTALL TRUMA POWER HARNESS**

**PARTS NEEDED:** TRUMA POWER HARNESS, BELL CAPS, ZIP TIES

**TOOLS NEEDED:** SCREW GUN, WIRE STRIPPERS, WIRE CRIMPERS, INCH POUND TORQUE WRENCH

STEP 1: LOCATE FUSE BOX, REMOVE FUSE BOX COVER AND SEAT COVER. (FIGURE 1, 2)

STEP 2: LOOSEN RETAINER ON GROMMET AND REMOVE BROWN 16 AWG WIRE IN POSITION 3 FROM THE FUSE BOX AND CAP OFF BROWN 16 AWG WIRE. (FIGURES 3, 4)

STEP 3: VIEW PRINT THAT CORRESPONDS TO THE FLOORPLAN. THIS WILL SHOW EASIEST PATH TO ROUTE WIRE THROUGH COACH AND LOCATION OF THE TRUMA COMBI HEATER

STEP 4: LOCATE COMBI HEATER - REMOVE ACCESS PANELS THEN PULL ELECTRICAL HOOK UP COVER ON THE COMBI HEATER (FIGURES 5, 6)

STEP 5: CUT ANY ZIP TIES SECURING THE WIRES, REMOVE THE BROWN 16 AWG WIRE AND WHITE 16 AWG WIRE FROM THE TRUMA COMBI HEATER, CUT THE SPADE CONNECTOR ENDS AND CAP OFF. (FIGURE 7)

STEP 6: TAKE THE TRUMA POWER HARNESS AND HOOK UP THE COLORED 12 AWG WIRE WITH SPADE CONNECTOR TO THE POSITIVE TERMINAL AND THE WHITE 12 AWG WIRE WITH SPADE CONNECTOR TO THE NEGATIVE TERMINAL. (FIGURE 7)

STEP 7: RESECURE THE WIRES WITH ZIP TIES AND REINSTALL THE ELECTRICAL COVER ON THE COMBI HEATER. (FIGURES 8)

STEP 8: TAKE THE OTHER END OF THE HARNESS FOLLOW THE PATH PROVIDED BY THE CORRECT CORRESPONDING FLOORPLAN. (IF NECESSARY) REMOVE PANELS AND COVERS MAKING SURE TO PROPERLY SECURE THE TRUMA POWER HARNESS EVERY 3'. (FIGURE 9)

STEP 9: ONCE THE HARNESS IS ROUTED TO THE FUSE BOX, RUN THROUGH THE LOOSENED GROMMET, THE COLORED WIRE WILL GO BACK INTO POSITION 3 AND THE WHITE 12 AWG WIRE WILL GO ON THE 12V GROUND BAR. CUT TO LENGTH LEAVING A MINIMUM OF 6 INCHES OF ADDITIONAL LENGTH FOR SERVICE. TORQUE EACH TO 16 in.-lbs. (FIGURES 10,11)

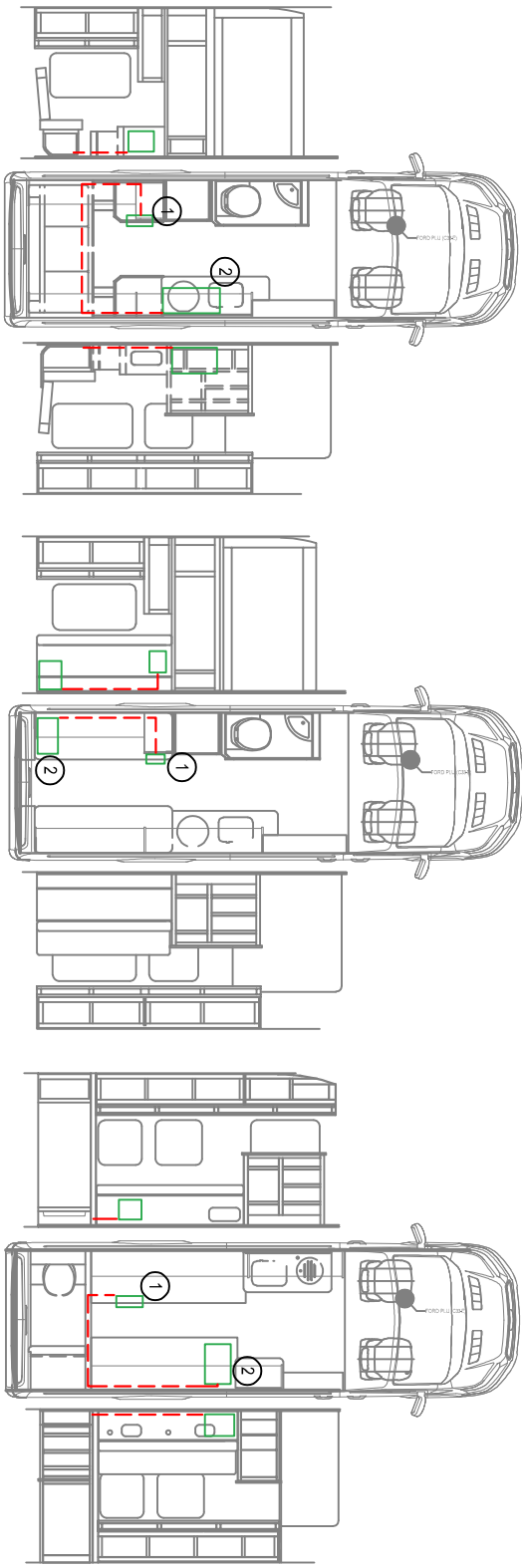
STEP 10: RESTORE POWER TO UNIT AND GO THROUGH PROPER TRUMA COMBI TESTING TO VERIFY FIX

STEP 11: TIGHTEN LOOSENED GROMMET (FIGURE12), REINSTALL ALL DISTURBED PANELS, AND BREAKER BOX COVER (FIGURE13)

**NOTES:**

1.-

THIS DRAWING AND THE INFORMATION CONTAINED HEREIN ARE THE EXCLUSIVE PROPERTIES OF COACHMEN R.V. CO. IT SHALL NOT BE COPIED OR REPLICATED IN ANY MANNER WITHOUT OUR WRITTEN CONSENT.	REV	CHANGE DESCRIPTION	BY	DATE	EQUIP
	-				



222C

222D

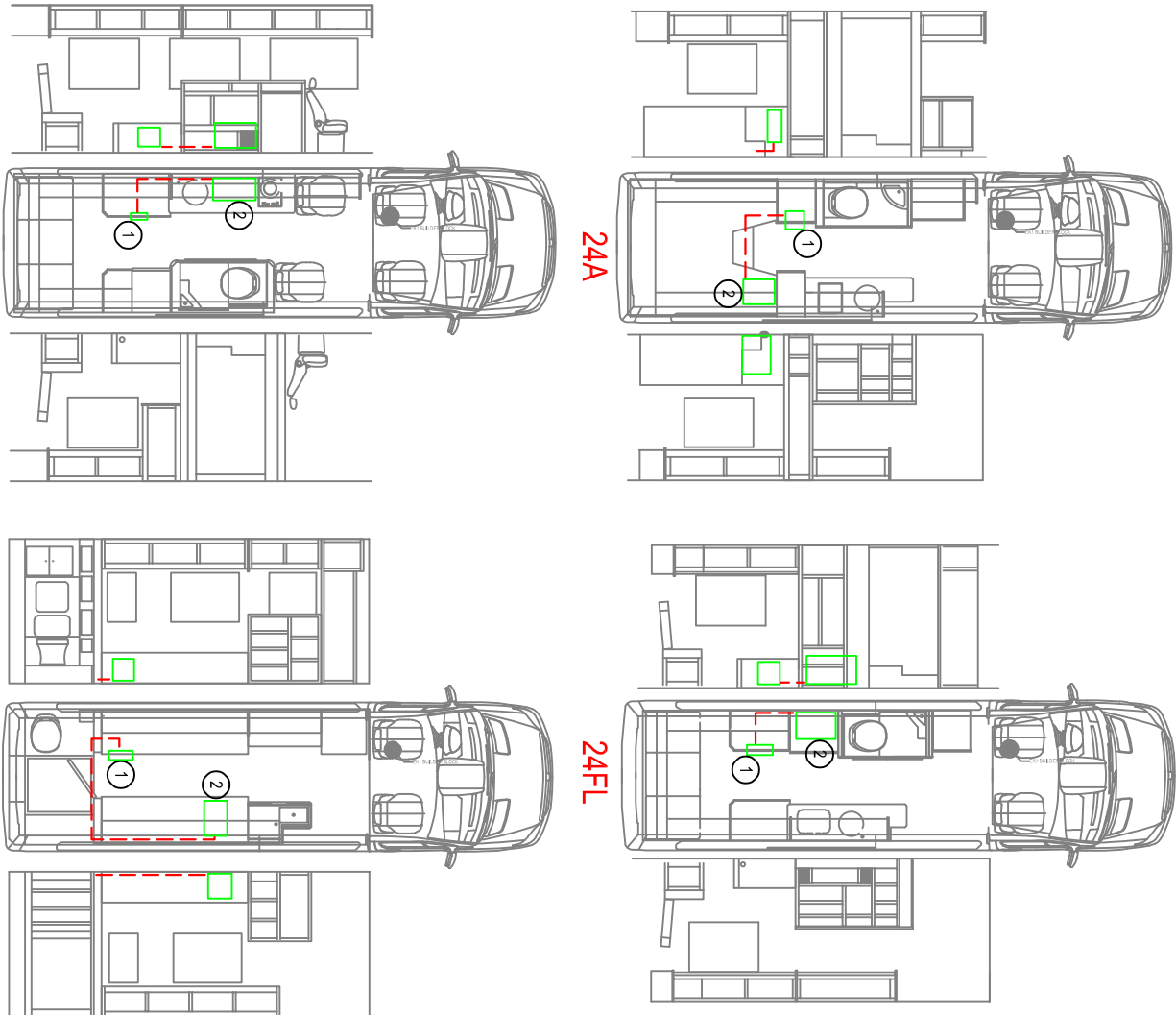
222RB

QUANTITY	REV	PART NO.	MATERIAL OR PART DESCRIPTION
-	3	-	TRUMA COMBI. FURNACE/WATER HEATER
-	2	-	WECO FUSE BOX
-	1	-	
MATERIAL OR PART DESCRIPTION			
CLASS CODE: -			
COACHMEN R.V. CO.			
DIVISION OF FOREST RIVERS, INC.			
DATE: 4/16/26			
NAME: SERVICE, COMBI POWER/ROUND WIRE ROUTE			
SCALE: DO NOT SCALE			
DRAWN BY: B			
SHEET: 1 OF 4			
USED ON: BEYOND			

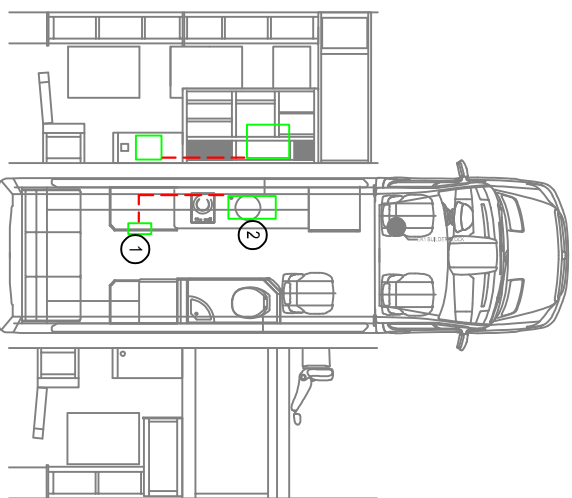
BEYOND

USED ON

NOTES:  
1.



REV	CHANGE DESCRIPTION	BY	DATE	EQUIP
1	REVISIONS TO EQUIP			



24T

QUANTITY	REF	PART NO.	MATERIAL OR PART DESCRIPTION
3	-	-	TRUMA COMBI. FURNACE/WATER HEATER
2	-	-	WECO FUSE BOX
1	-	-	

TOLERANCE UNLESS OTHERWISE SPECIFIED		DATE	
WOOD	±.125"	DATE	4/16/26
OTHER	±.063"	DATE	

GALLERIA		DO NOT SCALE	
USED ON	±.1"	SCALE	±.5"

COACHMEN R.V. CO.		CLASS CODE: -	
DIVISION OF FOREST RIVERS, INC.		SERVICES: COMBI POWER/ROUND WIRE ROUTE	

USED ON

±.1"

±.5"

DO NOT SCALE

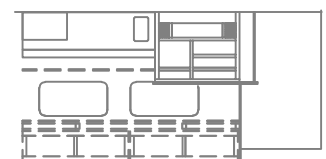
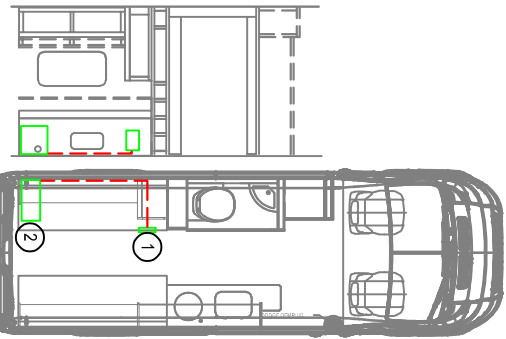
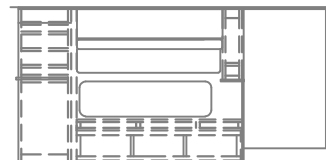
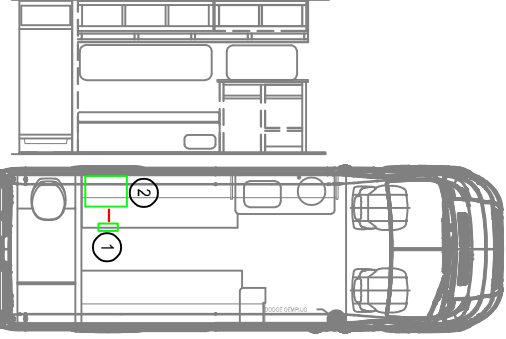
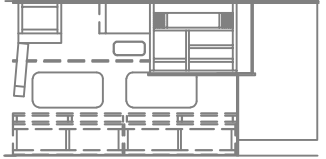
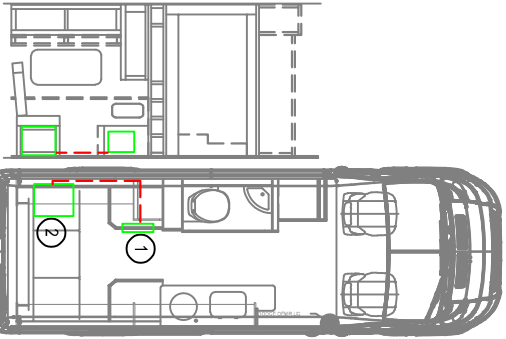
B

SHEET 2 OF 4

**NOTES:**

1.-

REV	CHANGE DESCRIPTION	BY	DATE	EQUIPP
1	THIS DRAWING AND THE INFORMATION CONTAINED HEREIN ARE THE EXCLUSIVE PROPERTY OF COACHMEN R.V. CO. IT SHALL NOT BE COPIED OR REPRODUCED IN ANY MANNER WITHOUT OUR WRITTEN CONSENT.			



QUANTITY	REF	PART NO.	MATERIAL OR PART DESCRIPTION
-	-	3	-
-	-	2	TRUMA COMBI. FURNACE/WATER HEATER
-	-	1	WECO FUSE BOX

CLASS CODE	DATE	DATE	SCALE	BY	DATE	REVISION
NOVA	4/16/26	4/16/26	DO NOT SCALE	B	3	4

TOLERANCE UNLESS OTHERWISE SPECIFIED	DATE	DATE	SCALE	BY	DATE	REVISION
WOOD ±.125"	NTH	4/16/26	DO NOT SCALE	B	3	4
OTHER ±.063"						



FIGURE 1



FIGURE 2



FIGURE 3



FIGURE 4



FIGURE 5

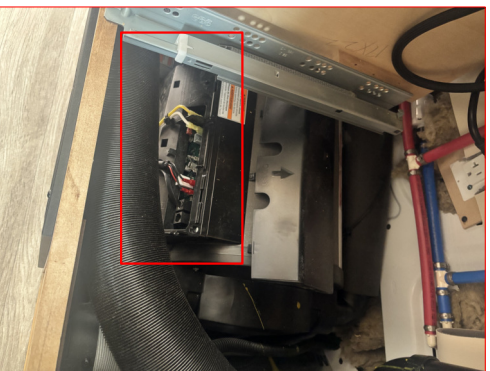


FIGURE 6



FIGURE 7

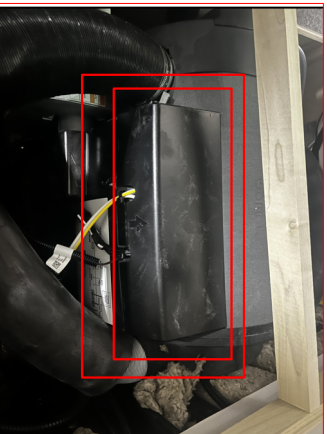


FIGURE 8



FIGURE 9

TERMINAL DESCRIPTION:	Max. Temperature (°C)	TORQUE: (In. - lbs.)	WIRE GAUGES: (AWG)
TERMINAL BARS: GROUND AND NEUTRAL	90	25 30 35	10-14 AWG WIRE 8 AWG WIRE 6 AWG WIRE
DC FUSE PANEL LUGS: +VCC, NEG., POS+	75	25 45 50	10 AWG WIRE 8 AWG WIRE 6 AWG WIRE 4 AWG WIRE
DC FUSE PANEL: SINGLE CIRCUIT TERMINALS	75	12-20 14-20 16-20 20-25	16 AWG WIRE 14 AWG WIRE 12 AWG WIRE 10 AWG WIRE

AVCC is not present on WF-8830/50

CD-L-00018-1

FIGURE 10

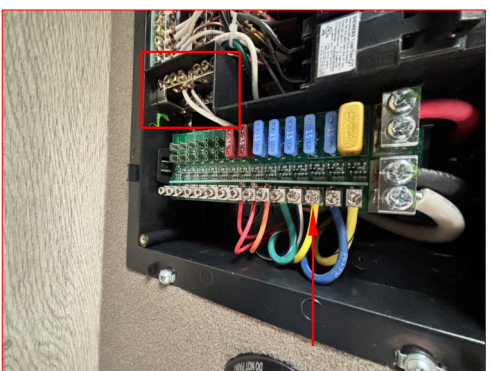


FIGURE 11

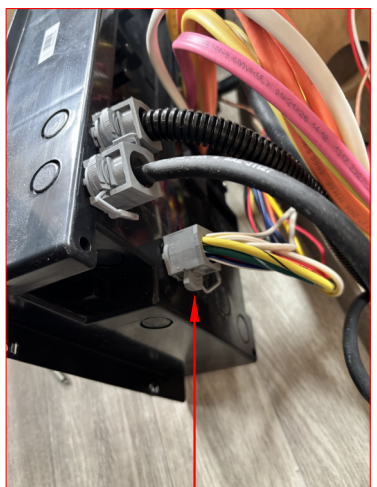


FIGURE 12



FIGURE 13

**NOTES:**

1.-

THIS DRAWING AND THE INFORMATION CONTAINED HEREIN ARE THE PROPERTY OF COACHMEN R.V. CO. IT SHALL NOT BE COPIED OR REPRODUCED IN ANY MANNER WITHOUT OUR WRITTEN CONSENT.	REV	CHANGE DESCRIPTION	BY	DATE	EQUIP#
	-				



QUANTITY	REV	PART NO.	MATERIAL OR PART DESCRIPTION
-	3	-	TRUMA COMBI, FURNACE/WATER HEATER
-	2	-	WECO FUSE BOX
-	1	-	

TOLERANCE UNLESS OTHERWISE SPECIFIED		DATE	
WOOD	±.125"	DATE	4/16/26
OTHER	±.063"	DATE	

DRAWN BY		SCALE	
PIXEL		DO NOT SCALE	

CLASS CODE		SHEET	
B		4 OF 4	