



**Countries:** CANADA, UNITED STATES, MEXICO  
**Availability:** ISIS, Bus ISIS, FleetISIS, NotSIR  
**Major System:** Fuel system  
**Current Language:** English  
**Other Languages:** NONE  
**Viewed:** 558

**Document ID:** IK1500105  
**Revision:** 1  
**Created:** 6/10/2023  
**Last Modified:** 4/22/2026  
**Author:** Brandon Akridge

[Less Info](#)

Hide Details

Coding Information

<b>Copy Link</b> 	<b>Copy Relative Link</b> 	<b>Bookmark</b>  <a href="#">View My Bookmarks</a>	<b>Add to Favorites</b> 	<b>Print</b> 	<b>Provide Feedback</b> 	<b>Helpful</b>  5	<b>Not Helpful</b>  0
----------------------	-------------------------------	--	-----------------------------	------------------	-----------------------------	-------------------------	-----------------------------

**Title:** Bus Diesel Fuel Cap Leaks

**Applies To:** MY2020, MY2021, MY2022, MY2023, MY2024 Bus with diesel fuel tank cap leaks built 11/30/20 to 5/18/23. OR MY2024, MY2025 Bus with fuel neck loose built 1/2/24 to 9/19/25.

## CHANGE LOG

Please refer to the change log text box below for recent changes to this article:

04/22/26 - added info for fuel neck loose  
06/20/2023 - Initial Article Release

## DESCRIPTION

This document is for Diesel buses MY2020, MY2021, MY2022, MY2023, and MY2024 specifically built between 11/30/20 and 5/18/23 that are experiencing fuel leaks at the fuel tank cap for not being seated fully, and for MY2024 and MY2025 buses built between 1/2/24 and 9/19/25 for fuel necks being loose.

## SYMPTOM(s)

**Customer Observations or Concerns:**

Fuel leaks at the cap during operation of the bus.

## SPECIAL TOOL(s) / SOFTWARE


Not applicable


## SERVICE PARTS INFORMATION

Kit Description	Part Number	Quantity Required	Notes

NECK,FUEL TANK FILLER , BTR DIESEL KIT, THRU FLOOR	4227136C91	1	Includes cap
RIVET , 5/32 IN NYLON	4344252C1	3	Optional larger rivet
Rivet, Alum Pop	400050000	3	Current production rivet

## **DIAGNOSTIC STEP(S)**

 <b>WARNING:</b>	
<p>To prevent property damage, personal injury, and/or death, park the vehicle on a hard, flat surface, turn the engine off, set the parking brake, and install wheel chocks to prevent the vehicle from moving in either direction.</p>	

 <b>WARNING:</b>	
<p>To prevent personal injury, and/or death, always wear safe eye protection, gloves, and any additional needed equipment when performing vehicle maintenance.</p>	

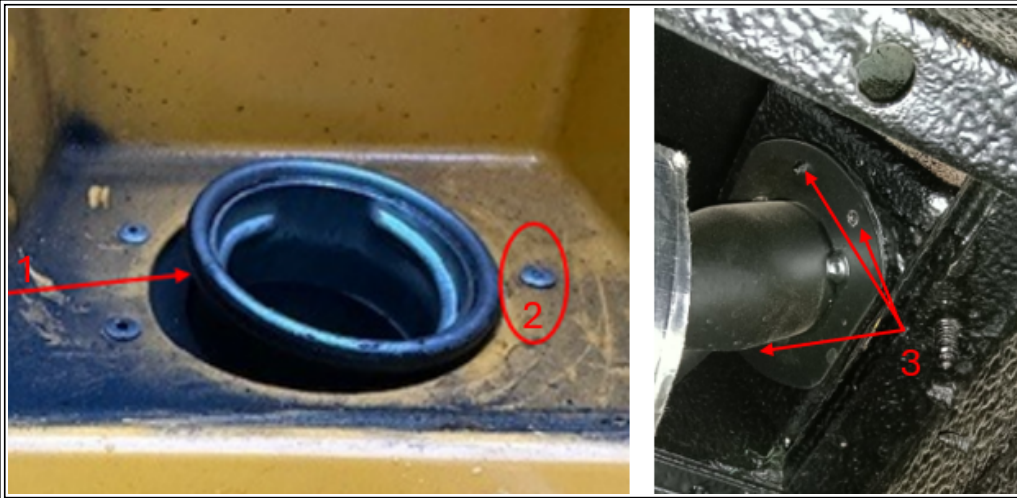
Step	Action	Decision
#1	<p><b>DIAGNOSTIC:</b></p> <p>Does your bus have fuel leaking from the cap area as shown in Figure #1 below?</p>	<p><b>Yes.</b> Proceed to Question #2.</p>
		<p><b>No.</b> This article does not apply.</p>



**Figure # 1: Fuel Cap Leaking**

- Item 1: Fuel Cap
- Item 2: Fuel Pocket Door Assembly
- Item 3: Rivets

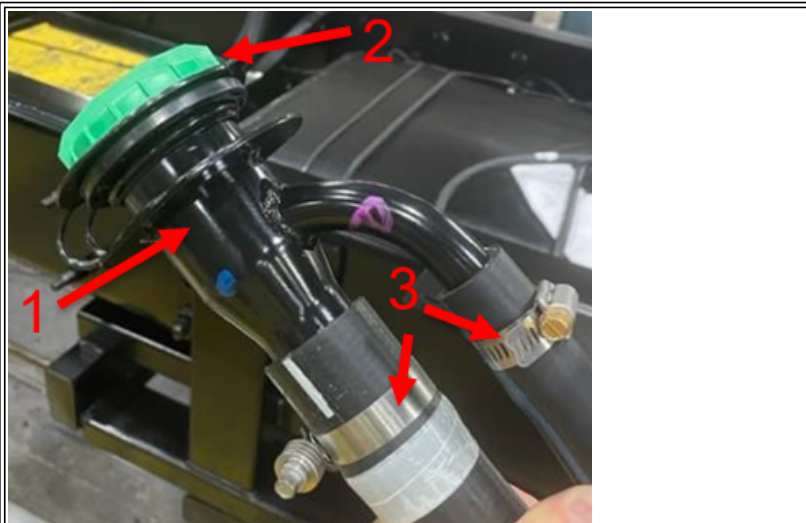
Step	Action	Decision
#2	<p><b>DIAGNOSTIC:</b></p> <p>Does your bus have a fuel neck that is leaning or loose, as shown in Figure #2 below?</p>	<p><b>Yes.</b> Proceed to Repair Instructions Section 2.</p>
		<p><b>No.</b> Proceed to Repair Instructions Section 1.</p>



**Figure # 2: Fuel Neck Loose**

- Item 1: Fuel Neck leaning/loose
- Item 2: Fuel Neck Rivets (3 total)
- Item 3: Fuel Neck Holes to receive Rivets

## **REPAIR STEP(s)**



**Figure #3: Fuel Neck**

- Item 1: Fuel Neck Assembly
- Item 2: Fuel Cap
- Item 3: Hose Clamps

## **Section 1**

### **REMOVAL PROCEDURE:**

1. Remove the fuel cap (item 2 in Figure #3). Can be retained for an extra shop part.
2. Remove the neck assembly from the fuel pocket door assembly as shown in Figure #1, by removing the rivets (item 3 in Figure #1).
3. Once the neck is separated from the fuel pocket, then loosen/remove the clamps (item 3 in Figure #3), and save for later.
4. Remove the fuel neck and discard.

### **INSTALLATION PROCEDURE:**

1. Install the new fuel neck as shown in Figure #3 onto the fuel lines and reinstall the clamps. Please orient the clamps as shown in Figure #3, and torque the fill hose clamp to 65 in-lbs and vent hose to 25 in-lbs.
2. Remove the fuel cap (save for step 3) from the assembly and install the new neck assembly (check rivet hole size, should be .14") into the fuel pocket door with the 3 rivets.
3. Install the new fuel cap.

## Section 2

### REMOVAL PROCEDURE:

1. Remove the fuel cap (item 2 in Figure #3). Examine Rivets (Item 2 in Figure #2) for any mounting defects (loose or unseated).
2. Remove and suspect rivets by drilling them out.
3. Check hole size in fuel neck, should be .14", if not drill to that size.

### INSTALLATION PROCEDURE:

1. Push the fuel neck against the pocket opening and reattach the fuel neck with 3 rivets 400050000.

Note: If holes are larger than .14", you can move to the larger 5/32" rivet 4343452c1.

---

## WARRANTY INFORMATION

### Warranty Claim Coding:

Refer to the [Warranty Coding Manual](#) for Group and Noun Codes.

---

### Standard Repair Time(s):

Refer to the [SRT Manual](#) for Repair Times

---

## OTHER RESOURCES

[Master Service Information Site](#)

 Hide Details

#### Feedback Information

Viewed: 557

Helpful: 5

Not Helpful: 0

No Feedback Found