



Countries: RUSSIA, AUSTRALIA, BAHAMAS, BOLIVIA, BRAZIL, BELIZE, CANADA, CHILE, TAIWAN, COLOMBIA, COSTA RICA, DOMINICAN REPUBLIC, ECUADOR, EL SALVADOR, TRINIDAD AND TOBAGO, UNITED STATES, URUGUAY, VENEZUELA, MEXICO, ARUBA, NICARAGUA, PERU, PUERTO RICO, Curaçao, GUAM, GUATEMALA, GUYANA, HAITI, HONDURAS, JAMAICA, KOREA, SOUTH KOREA, NEW ZEALAND, PANAMA, SOUTH AFRICA

Document ID: IK2600297

Availability: ISIS, FleetSIS, Body Builder, IsSIR

Revision: 0

Major System: PROGRAMMING SUPPORT

Created: 10/28/2025

Current Language: English

Last Modified: 4/14/2026

Other Languages: NONE

Author: Matthew Carrigan

Viewed: 91

[Less Info](#)

Hide Details

Coding Information

Copy Link 	Copy Relative Link 	Bookmark View My Bookmarks	Add to Favorites 	Print 	Provide Feedback 	Helpful 2	Not Helpful 0
----------------------	-------------------------------	--	-----------------------------	------------------	-----------------------------	-------------------------	-----------------------------

Title: Programming Information Associated with International A26B Engines

Applies To: A26B engines

CHANGE LOG

Please refer to the change log text box below for recent changes to this article:

04/14/2026 - Initial Article Release

Description

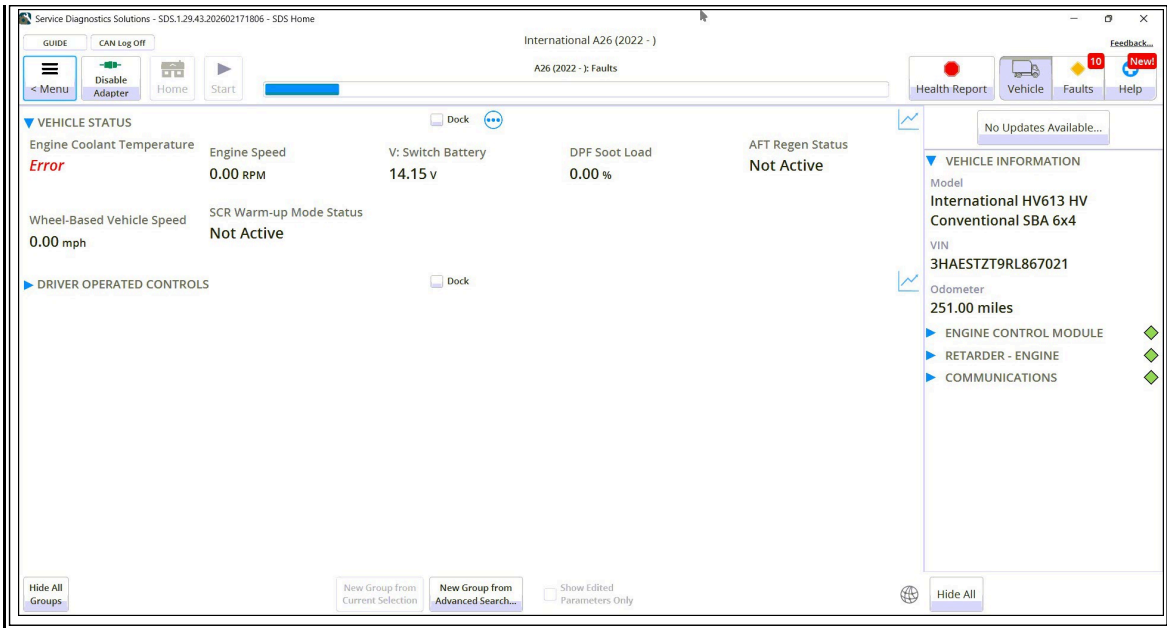
This document enables technicians to:

1. Accurately identify International® A26B engine control systems.
2. Understand the programming requirements and system behavior.
3. Perform programming tasks independently without needing technical support.

Table Of Contents

Timeline	Common Programming Issues With A26B Systems	A26B Horsepower Quotes
Software / Hardware Integrations	Connecting To An A26B Engine	A26B Engine Swaps And IQA Data
How To Identify An A26B Engine	Source Addresses	SDS Programming Special Instructions
How A26B Engine Modules Work	A26B Module Parts Information	

Timeline



[Return to Top](#)

Source Addresses

- The ECM broadcasts source address 0 (zero) on the J1939 data link.
 - [IK0800351](#) provides more information on source addresses.
- The source address can be seen in the sniffer in either NED or NavKal.
- If using a NEXIQ Communication cable, you could check the NEXIQ Device Tester to see if source address 0 shows on the J1939 data link.
 - [IK2600293](#) provides more information about the NEXIQ Device Tester.

[Return to Top](#)

International A26B Engine Module Parts Information

- If you need engine identification information, please see [IK2600242](#).
- For more pictures of these modules, see [IK2600273](#).

A26B ECM	Programming Station Connected



[Return to Top](#)

International A26B Horsepower Quotes

- Horsepower increases are supported for A26B engines. Follow the process outlined in [IK2600069](#) to submit a case file for a horsepower quote.
- Horsepower quotes are only supported for International® dealerships. Horsepower quote information can only be provided via a case file.
- Below is some general ratings information.
 - 2021 A26B engines in line haul trucks can only be rated at 475 hp. There are no other ratings options.
 - 2021 A26B engines in vocational trucks have a range of 370 hp to 475 hp, depending on the truck model.
 - 2022+ A26B engine in line haul trucks can be rated at either 475 hp or 515 hp. Those are the only ratings available.
 - 2022+ A26B engines in vocational trucks have a range of 370 hp to 515 hp, depending on the truck model.
- **Although the engine may support a range of horsepower ratings, this does not mean the vehicle qualifies for the highest available rating. International only supports horsepower ratings that were available for any given vehicle / engine combination at the time the vehicle was built.**
- If the engine you're considering already has the highest possible rating, then no increases are available. There is no need to submit a case file requesting a horsepower quote if the engine is already at the highest supported rating, as such a request will be denied. The screenshot below shows the highest ratings available for A26B engines in both vocational and line haul trucks.

Application	Rating Code	Horsepower	Torque
2021 Line Haul	12BGH	475	1,700
2021 Vocational	12BEY	475	1,700
2022+ Line Haul	12BGJ	515	1,850
2022+ Vocational	12BEZ	515	1,850

[Return to Top](#)

International A26B Engine Swaps and IQA Data

There are three A26B engine types technicians should be aware of.

Engine Type	ESN Structure	IQA Data
Production Engine	124KM2Yxxxxxx	Production engines were originally built to be installed in a specific VIN at an assembly plant. As-built IQA data is stored by International. However, International does not have IQA data for injectors that were changed after the truck was built.

Service Engine	124KM2Yxxxxxx	Service engines were not built for a specific VIN. They were built to remain available until they are needed to replace another engine. As-built IQA data is stored by International. However, <u>International does not have IQA data for injectors that were changed after the truck was built.</u>
Remanufactured Engine	ESN typically begins with "S".	Remanufactured engines were remanufactured by another business besides International and therefore were not given an ESN that follows the structure of International ESNs. <u>International does not have any record of the IQA values.</u>

See [IK2600047](#) for information about engine swaps in general. Programming changes may be needed in order to accommodate an engine swap. There are some instances where International CANNOT support an engine swap. If you have any doubts about whether your engine swap will be supported by International, please start a case file with the Vehicle Programming group BEFORE swapping engines and we will let you know if International® will support the swap. The potential negative outcome would be that you install an engine that International cannot support – then we would not be able to provide you with any programming changes to support the new engine.

[Return to Top](#)

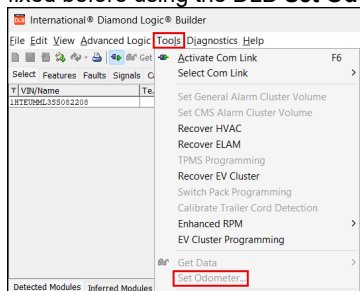
SDS Programming Special Instructions

1. SDS is the only software for programming A26B ECMs.
2. You DO NOT need to remove fuses to program an A26B ECM with SDS.
Explanation: Before SDS begins programming, it sends out a data link message instructing all other modules to stop communicating. A26A powered vehicles were the first vehicles produced by International that had all modules compliant with this data link message. For all vehicles built prior to 2017 A26A engines (N Series, MaxxForce...), International recommends removing the ABS fuse and transmission fuse before programming.

[Return to Top](#)

Common Programming Issues with A26B Systems

1. Cluster Message: "Regen Failed: Contact Service Center"
Issue: This is a message sent by the ECM to the cluster to warn the driver that there is an issue with the regen process but it is not to the point of setting a fault code.
-Fix: Diagnostics can be found in the engine diagnostic manual: Symptom Diagnostics > Aftertreatment System > Diesel Particulate Filter (DPF) Regeneration Fails
2. Total Miles in odometer (in instrument cluster) changes during programming.
Issues:
 - a. Odometer miles is reduced by EXACTLY fifty percent (cut in half)
-Fix: Remote support will be needed. Start a case file with the Vehicle Programming group as the body controller kernel will need to be rolled back. See [IK3000111](#) for instructions on how to start a case file.
 - b. Odometer miles increase
-Fixes:
 1. Use DLB **Set Odometer** function to set the odometer to the current ECM value for total vehicle distance. This option can be found in DLB > Tools > Set Odometer. The DLB **Set Odometer** function forces the cluster to acquire the total vehicle distance from the engine ECM. If the ECM total vehicle distance is set to an incorrect value, that will need to be fixed before using the DLB **Set Odometer** option.



2. If setting the odometer through DLB does not fix the issue, then remote support will be needed. You will need to start a case file with the Vehicle Programming Group. See [IK3000111](#) for instructions on how to start a case file.
3. SDS Update Manager screen appears blank. This can be caused by having insufficient user permissions for the SDS software.



-Fixes:

1. Contact your dealer administrator to see if you have the standard dealer level permissions
 2. Submit a case file to the EZ-Tech Support Team. See [IK3000111](#) for instructions.
 4. [SDS Cannot clear Oil Change Fault 1378-31](#)
-Fix: Change these parameters: A814 000 "Fuel Used Service Interval", A814 001 "Engine Hours Service Interval", and A814 002 "Vehicle Distance Servcie Interval" to "0" (zero).
- [Return to Top](#)

OTHER RESOURCES

[Master Service Information Site](#)

[RC2600001 - Vehicle Programming Resource Center](#)

 Hide Details

Feedback Information

Viewed: 90
Helpful: 2
Not Helpful: 0

No Feedback Found