

2026 RX 350, RX 350h, RX 450h+, and RX 500h Pre-Delivery Service (PDS)

Service Category General

Section Pre-Delivery Service

Market USA



Applicability

YEAR(S)	MODEL(S)	ADDITIONAL INFORMATION
2026	RX350, RX350H, RX450H+, RX500H	

REVISION NOTICE

April 30, 2026 Rev1:

- The Required Tools & Equipment section has been updated.
- The Customize ACC Function section has been removed.

Any previous printed versions of this bulletin should be discarded.

Introduction

Pre-Delivery Service (PDS) is a critical step in satisfying our new car customers. Customer feedback indicates the following areas deserve special attention when performing PDS:

- Careful inspection for paint chips/scratches and body dents/dings.
- Proper operation of electrical accessories (including interior light, clock, and radio reset).
- Interior cleanliness.
- Proper function of mechanical systems.

The PDS process helps identify potential vehicle concerns before customer delivery. After completing the PDS process, maintain accurate PDS records by ensuring the required documents listed below are completed and recorded in accordance with Lexus Warranty Policy.

- GTS+ Health Check
- Completed PDS Check Sheet
- Battery Charge Test Print Out
- GTS+ Tire Pressure Information

Customer retention and proper maintenance of vehicles are and have always been a major focus for Lexus. To help remind customers that regular service is essential to the proper maintenance of the vehicle, dealers are required to install a service reminder sticker before delivery. By doing this, customers will be reminded to return to your dealership for service. Your current service reminder sticker may be used.

2026 RX 350, RX 350h, RX 450h+, and RX 500h Pre-Delivery Service (PDS)

Introduction (continued)

This bulletin contains the PDS procedures that apply specifically to 2026 model year RX 350, RX 350h, RX 450h+, and RX 500h vehicles.

Refer to [L-PDSB-CS001-D](#) the universal *Check Sheet* that contains PDS steps that apply to all 2026 model year Lexus vehicles. To properly perform a complete PDS, you must complete all procedures contained in this TSB as well as the PDS Check Sheet. In addition, if the vehicle is stored for over 30 days, refer to [L-SB-0011-25](#), *Long-Term Vehicle Storage Guidelines*.

Refer to the table below for a definition of terms that may be used in this bulletin.

Table 1.

TERM	ACRONYM	DEFINITION
Conventional Vehicle	CV	A vehicle with only a gasoline engine for propulsion
Electrified Vehicle	EV	A vehicle that utilizes a hybrid, plug-in hybrid, or battery electric system for propulsion
Hybrid Electric Vehicle	HEV	A vehicle with both a gasoline engine and an HV battery
Plug-in Hybrid Electric Vehicle	PHEV	A vehicle with both a gasoline engine and an HV battery that can be charged externally
Battery Electric Vehicle	BEV	A vehicle with only an HV battery that can be charged externally
State of Charge	SOC	The remaining capacity available in a battery
12-Volt	12V	Standard 12V battery used to power electrical systems separate from high voltage components
High Voltage	HV	HV Battery used to power the electrified vehicle

2026 RX 350, RX 350h, RX 450h+, and RX 500h Pre-Delivery Service (PDS)

Table of Contents

- [Warranty Policy](#).....4
- [Warranty Information](#)4
- [Required Tools and Equipment](#)4
- [D/C Cut Fuse Installation](#)5
- [Front License Plate and Mounting Bracket Installation*](#)6
- [Emergency Towing Eyelet Removal*](#)8
- [Front Emergency Towing Eyelet Hole Cover Installation](#)9
- [Installation of Rubber Body Plugs](#)10
- [Power Back Door Initialization](#)11
- [Tire Pressure Warning System \(TPWS\) Activation and Initialization*](#)11
 - [Activation Procedure](#).....11
 - [Initialization Procedure](#).....12
- [Enable Hybrid Battery Thermal Keep Control Mode*](#)12
 - [Confirm Hybrid Battery Thermal Keep Control Mode State](#).....13
 - [Set Hybrid Battery Thermal Keep Control Mode](#).....13
- [Seating Position Control ECU Initialization](#)14
- [Head Unit System Reset](#)14
- [Dealer Contact Information for Call Dealer Head Unit Function](#)15
- [Navigation — Set Date & Time by GPS](#).....15
- [Parking Support Brake System Initialization](#)15

*If applicable.

2026 RX 350, RX 350h, RX 450h+, and RX 500h Pre-Delivery Service (PDS)

Warranty Policy

If the need for additional repairs or adjustment is noted during PDS, the required service should be performed under warranty. Reimbursement will be managed under the warranty policy.

The Warranty Policy and Procedures Manual requires that you maintain the completed Check Sheet in the customer's file. If you cannot produce a completed form for each retailed vehicle upon TMS and/or Region/Distributor audit, the PDS payment amount will be subject to debit.

An additional Repair Order completed in conjunction with normal PDS MUST have time punch/flags for service. If multiple repairs are performed, separate time flags MUST be punched for each repair.

Warranty Information

OP CODE	DESCRIPTION	TIME	OFP	T1	T2
N/A	Not Applicable to Warranty	-	-	-	-

Required Tools & Equipment

REQUIRED EQUIPMENT	SUPPLIER	PART NUMBER	QTY
Techstream ADVi*	ADE	TSADVUNITECP	1
Techstream Lite		TSLP3DLR01	
Techstream Lite (Green Cable)		TSLP2DLR01	

*Essential SST.

NOTE

- Only ONE of the Techstream units listed above is required.
- Software version 2026.01.003.02 or later is required.
- Additional Techstream units may be ordered by calling Approved Dealer Equipment (ADE) at 1-800-368-6787 or by visiting *TIS – Diagnostics – Tools & Equipment – Techstream Order Portal*.

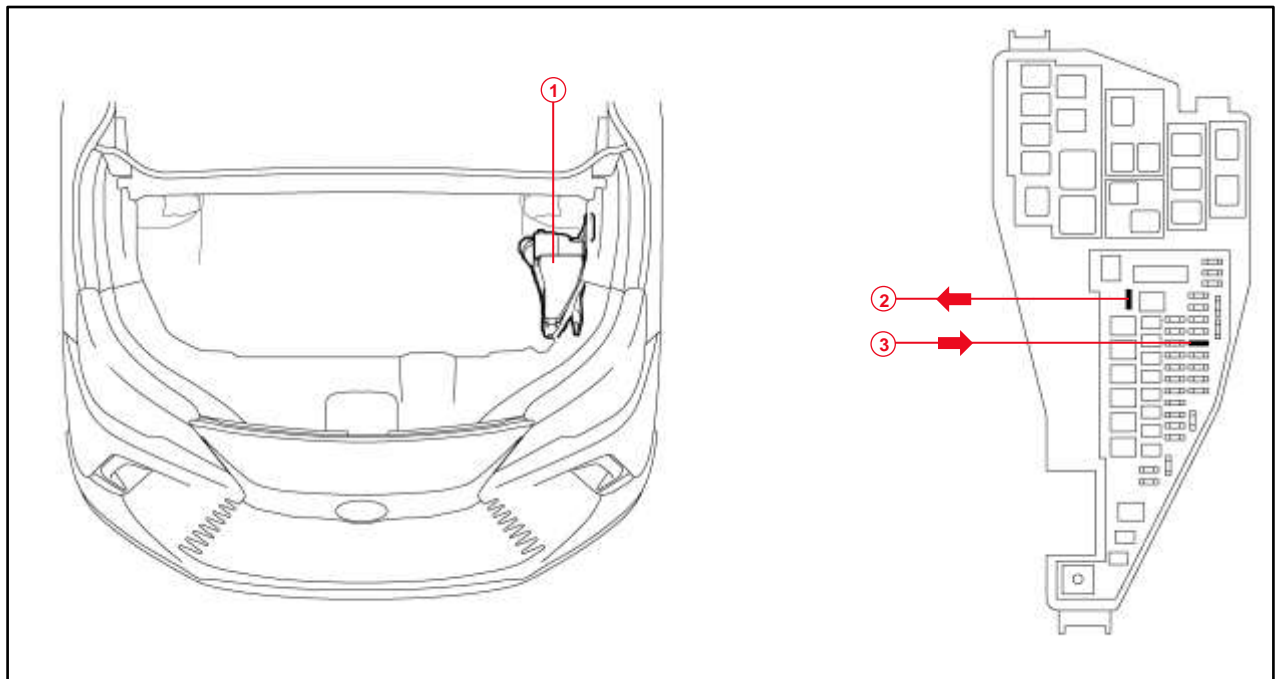
2026 RX 350, RX 350h, RX 450h+, and RX 500h Pre-Delivery Service (PDS)

D/C Cut Fuse Installation

Check the location of the D/C Cut fuse (20A). It may have been removed at the assembly plant and temporarily stored in the blank space of the relay block in the engine compartment to minimize battery discharge during transportation and storage.

- If the D/C Cut fuse (20A) is still in its original location in the relay block, proceed with performing a Health Check using GTS+.
- If the D/C Cut fuse (20A) is NOT in its original location, it is necessary to remove the D/C Cut fuse (20A) from the blank space in the relay block and reinstall it to its original location as shown. After installation, confirm ALL related DTCs are cleared.

Figure 1.



1	Relay Block
2	Remove the D/C Cut Fuse (20A) (Blank Space)

3	Install the D/C Cut Fuse (20A) (Original Location)
----------	---

NOTE

- With the D/C Cut fuse (20A) removed, if ANY DTCs are detected when the ignition is turned ON during transportation, use GTS+ to clear ALL DTCs AFTER ensuring that there are NO malfunctions.
- While the vehicle is stored at the dealership, disconnect the negative (-) battery terminal to prevent battery discharge. Refer to [L-SB-0019-25](#), *Battery Inspection and Maintenance During PDS*, for battery maintenance information.

2026 RX 350, RX 350h, RX 450h+, and RX 500h Pre-Delivery Service (PDS)

Front License Plate and Mounting Bracket Installation

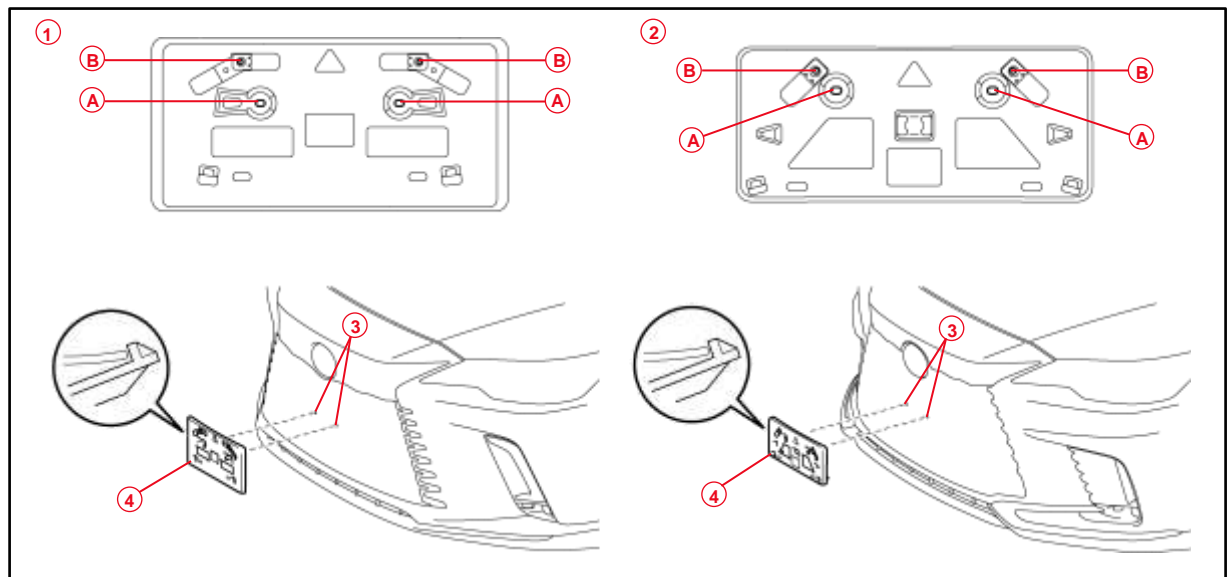
The front license plate mounting bracket and two self-tapping screws are loaded in the vehicle at the assembly plant. Follow this procedure to install the front license plate mounting bracket and front license plate in states where it is required by law.

1. Align holes “A” of the mounting bracket with the dimples on the radiator grille.

NOTE

- Holes “A” are used for installation of the front license plate mounting bracket to the radiator grille.
- Holes “B” are used to install the license plate onto the mounting bracket.

Figure 2.



A	Holes “A” for Mounting Bracket
B	Holes “B” for Front License Plate
1	Type A

2	Type B
3	Dimples
4	Mounting Bracket

2026 RX 350, RX 350h, RX 450h+, and RX 500h Pre-Delivery Service (PDS)

Front License Plate and Mounting Bracket Installation (continued)

- Screw the two self-tapping screws directly into the dimples to install the front license plate mounting bracket.

NOTICE

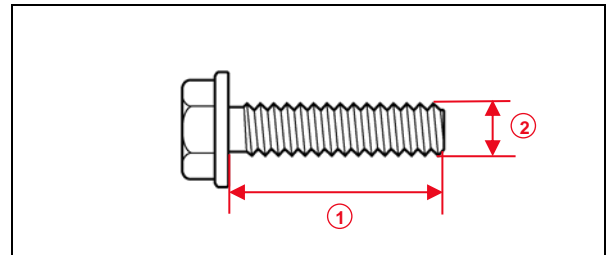
Do NOT overtighten the self-tapping screws.

- Install the front license plate onto the mounting bracket using two non-corroding bolts with the following dimensions:

Nominal Length: 15.0 mm (0.59 in.)

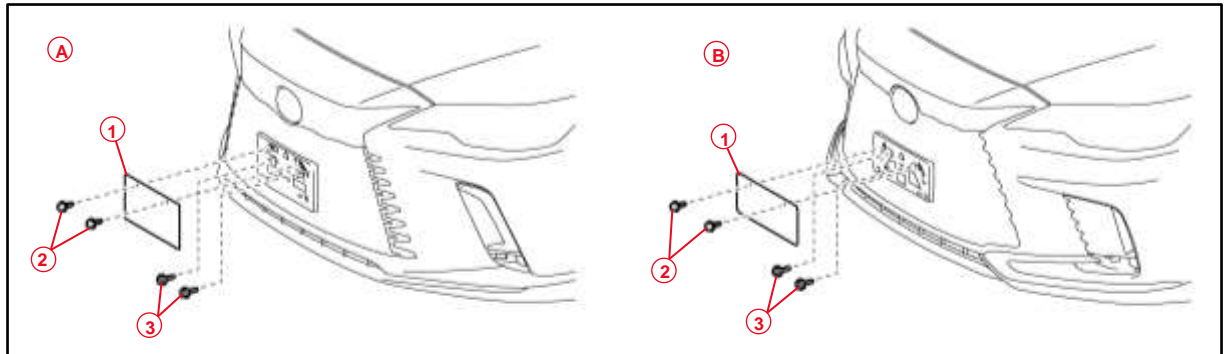
Diameter: 6.0 mm (0.24 in.)

Figure 3.



1	Nominal Length
2	Diameter

Figure 4.



A	Type A
B	Type B
1	Front License Plate

2	Bolts
3	Self-tapping Screws

2026 RX 350, RX 350h, RX 450h+, and RX 500h Pre-Delivery Service (PDS)

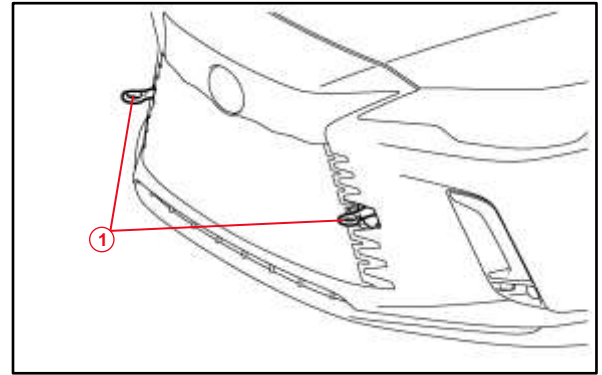
Emergency Towing Eyelet Removal

1. Remove the front emergency towing eyelets from the front bumper by turning them counterclockwise.

HINT

If it is difficult to loosen the front emergency towing eyelet, use a steel bar.

Figure 5.



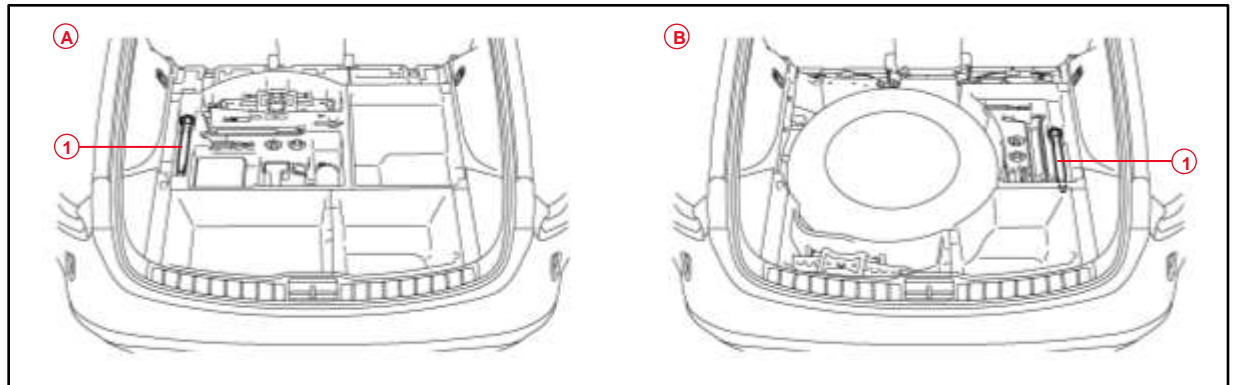
1	Front Emergency Towing Eyelets
----------	---------------------------------------

2. Place one of the removed emergency towing eyelets into the luggage tray in the luggage compartment.

HINT

Dispose of the other removed emergency towing eyelet.

Figure 6.



1	Emergency Towing Eyelet
----------	--------------------------------

A	Type A Layout
----------	----------------------

B	Type B Layout
----------	----------------------

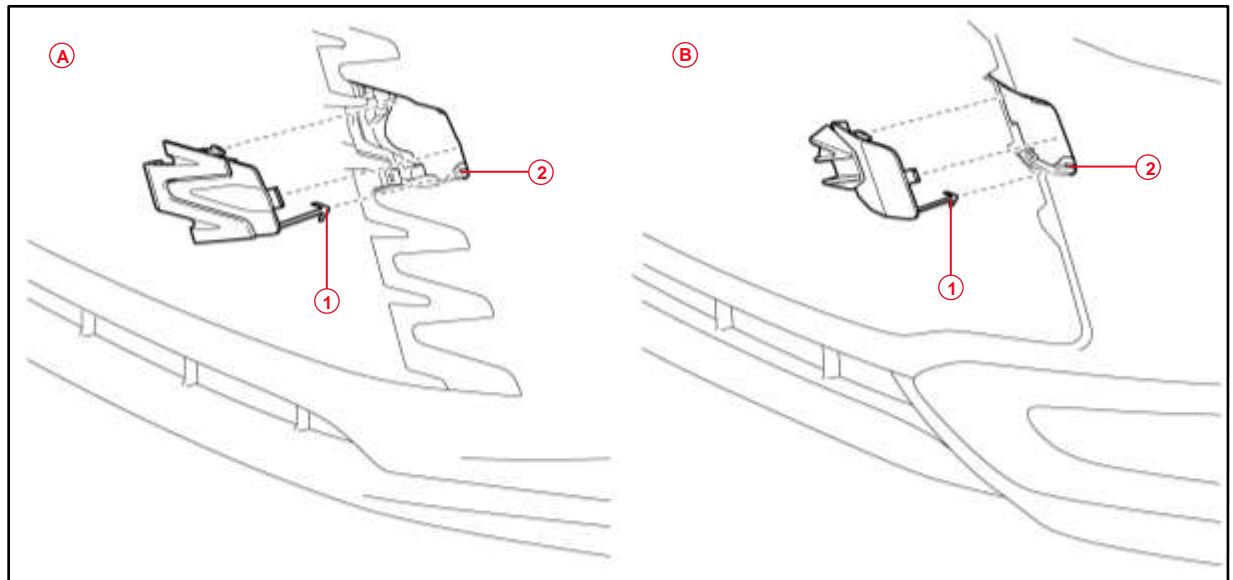
2026 RX 350, RX 350h, RX 450h+, and RX 500h Pre-Delivery Service (PDS)

Front Emergency Towing Eyelet Hole Cover Installation

Install the front emergency towing eyelet hole covers, which are stored in the glove compartment, onto the front bumper.

1. Insert the arrow-shaped part of the emergency towing eyelet hole cover “1” into the eyelet hole “2” as shown.
2. Install the emergency towing eyelet hole cover to the hole of the front bumper.

Figure 7.



1	Arrow-shaped Part
2	Eyelet Hole

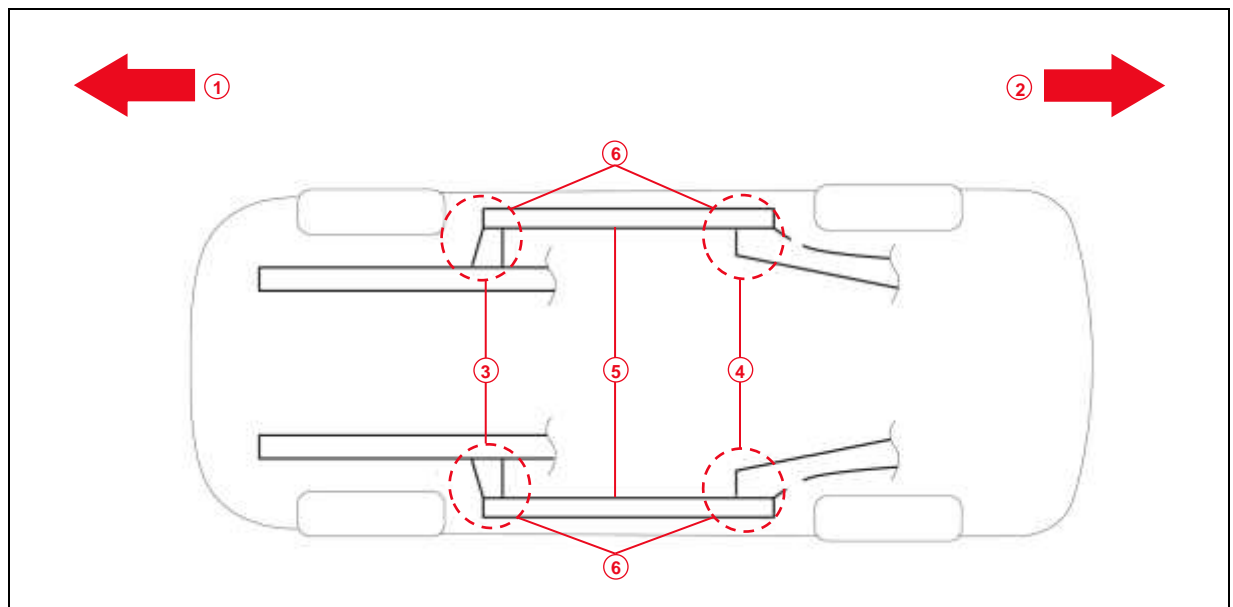
A	Type A Cover
B	Type B Cover

2026 RX 350, RX 350h, RX 450h+, and RX 500h Pre-Delivery Service (PDS)

Installation of Rubber Body Plugs

1. Confirm the number of plugs in the glove box. If two plugs are present, perform substep 2A ONLY. If four plugs are present, perform substep 2A AND substep 2B.
2. Install plugs according to the instructions below by confirming the number of plugs in the glove box.
 - A. Install two plugs in the rear side member hole or rocker inner hole (see below).
 - B. Install two plugs in the torque box hole or rocker inner hole (see below).

Figure 8.



1	Front Side
2	Rear Side
3	Torque Box Hole or Rocker Inner Hole

4	Rear Side Member Hole or Rocker Inner Hole
5	Rocker Inner
6	Install Plug Here (if Applicable)

NOTICE

- The installation of these plugs is required to prevent rust.
- These plugs are stored in the glove box.
- The number of plugs may vary according to production locations in the same vehicle model.

2026 RX 350, RX 350h, RX 450h+, and RX 500h Pre-Delivery Service (PDS)

Power Back Door Initialization

As a result of the removal of the D/C Cut fuse with the back door opened, the “automatic open and close” function of the power back door will be inoperative due to loss of the back door position memory stored in the ECU.

Refer to the applicable Repair Manual for the power back door initialization procedure.

- [2026](#) RX 350, RX 350h, RX 450h+, and RX 500h:
Vehicle Exterior – Door / Hatch – Back Door Closer ECU – Initialization

Tire Pressure Warning System (TPWS) Activation and Initialization

The tire pressure warning valve and transmitter should be activated and initialized during PDS at the dealership. Follow the procedure below to operate the TPWS.

Activation Procedure

1. Connect Techstream to the diagnostic connector DLC3.
2. Turn the ignition switch ON and verify that the tire pressure warning light remains illuminated after blinking for one minute.
3. For each tire, press the valve core to quickly reduce the tire pressure by 40 kPa (0.4 kgf/cm², 6 psi) or more within 30 seconds.
4. Using GTS+, verify that the Vehicle Control History (RoB) does not display Transmitter Stop codes X20F0 – X20F4.
 - A. If the Vehicle Control History (RoB) codes X20F0 – X20F4 are displayed, repeat step 3.
 - B. If the Vehicle Control History (RoB) codes X20F0 – X20F4 are displayed after repeating step 3, turn the tires 90 – 270 degrees.

NOTE

- If any Vehicle Control History (RoB) codes other than the Vehicle Control History (RoB) codes X20F0 – X20F4 are displayed, refer to the applicable Repair Manual.
- Vehicle Control History (RoB) Code X20F4 will only appear in vehicles that include five tire pressure sensors.

2026 RX 350, RX 350h, RX 450h+, and RX 500h Pre-Delivery Service (PDS)

Tire Pressure Warning System (TPWS) Activation and Initialization (continued)

Initialization Procedure

Refer to the applicable Repair Manual for the TPWS initialization procedure.

- [2026](#) RX 350, RX 350h, RX 450h+, and RX 500h:

Suspension – Tire Pressure Monitoring – Tire Pressure Warning Receiver – Initialization

NOTE

- To adjust the tire pressure correctly when the outside temperature is significantly colder than shop temperature, perform a Health Check using GTS+ and select the compensation tire pressure checkbox. Compensation pressures will display on the Health Check results screen. Adjust the tire pressure when the tires are cold.
- This model has four TPWS sensors.

Enable Hybrid Battery Thermal Keep Control Mode (RX 450h+ Only)

The HV/EV battery may freeze in extremely cold areas. As a result, the HV/EV battery may become excessively weak, and the system may NOT be able to be started. By enabling Hybrid Battery Thermal Keep Control Mode, it is possible to warm the HV/EV battery and maintain its current temperature to prevent it from becoming excessively weak.

When this mode is set to ON, the timer charging settings are canceled at temperatures of 14°F (-10°C) or lower. Charging will begin immediately when the charging cable is connected to the vehicle.

Table 2. HV/EV Battery Thermal Keep Control Mode

PURPOSE	CONDITION	OPERATION
Prevent HV/EV battery from freezing	Ambient temperature is 14°F (-10°C) or lower.	Begins to warm the HV/EV battery to maintain its current temperature when the ambient temperature drops to 14°F (-10°C) or lower when the charging cable is connected to the vehicle.
	Charging cable is connected to the vehicle.	To prevent the HV/EV battery from freezing when a charging start time is set, when the Hybrid Battery Thermal Keep Mode is enabled, the charging timer will be disabled, and charging will begin immediately when the charging cable is connected to the vehicle.

To enable Hybrid Battery Thermal Keep Control Mode, it is necessary to use GTS+ during PDS at the dealership.

2026 RX 350, RX 350h, RX 450h+, and RX 500h Pre-Delivery Service (PDS)

Enable Hybrid Battery Thermal Keep Control Mode (RX 450h+ Only) (continued)

Confirm Hybrid Battery Thermal Keep Control Mode State

1. Connect the Techstream to the DLC3.
2. Turn the power switch IG-ON.
3. Read the Data List on GTS+ software by entering the following menus: *Powertrain – HV Battery – Data List – Hybrid Battery Thermal Keep Control Mode Status*.
4. Check the results by referring to the following table:

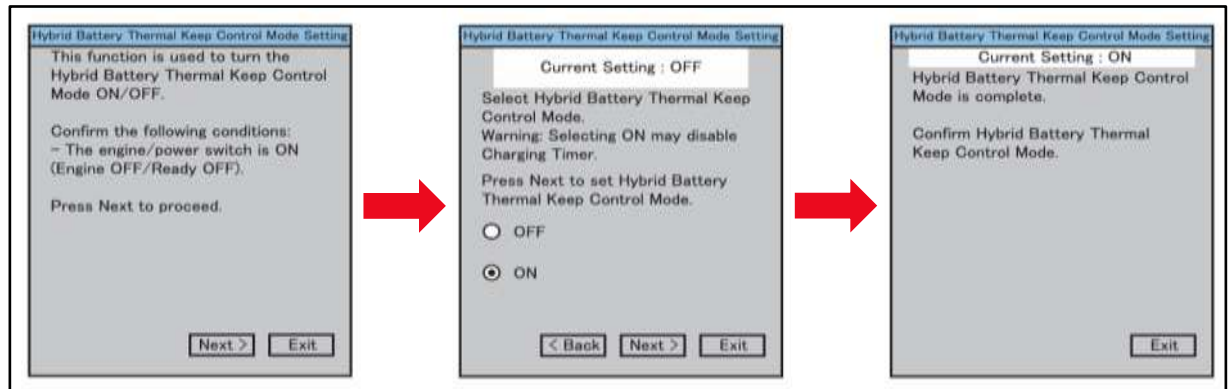
Table 3.

TESTER DISPLAY	MEASUREMENT ITEM	RANGE	NORMAL CONDITION
Hybrid Battery Thermal Keep Control Mode Status	Hybrid Battery Thermal Keep Control Mode State	ON or OFF	ON: Enabled OFF: Disabled

Set Hybrid Battery Thermal Keep Control Mode

1. Connect the Techstream to the DLC3.
2. Turn the power switch to IG-ON.
3. Enter the following menus: *Powertrain – HV Battery – Utility – Hybrid Battery Thermal Keep Control Mode*.

Figure 9.



2026 RX 350, RX 350h, RX 450h+, and RX 500h Pre-Delivery Service (PDS)

Enable Hybrid Battery Thermal Keep Control Mode (RX 450h+ Only) (continued)

Set Hybrid Battery Thermal Keep Control Mode (continued)

4. Confirm the following message is displayed:
“This function is used to turn the Hybrid Battery Thermal Keep Control Mode ON / OFF.”
5. Confirm that the conditions displayed on the screen are met and then press Next.

NOTE

The power switch is ON (Ready OFF).

6. Confirm the following message is displayed: “Select Hybrid Battery Thermal Keep Control Mode.”
7. Select ON and press Next.

NOTICE

Selecting ON may disable the charging timer.

8. Confirm the following message is displayed: “Hybrid Battery Thermal Keep Control Mode is complete.”

Seating Position Control ECU Initialization

Refer to the applicable Repair Manual for the seating position control ECU initialization procedure (procedure 2).

- [2026](#) RX 350, RX 350h, RX 450h+, and RX 500h:
Vehicle Interior – Seat – Front Power Seat Control System (w/ Memory) – Registration

Head Unit System Reset

Prior to vehicle delivery, please confirm that the welcome screen with language options appears on the head unit display when ignition is switched to the ON position. There may be instances where the welcome screen with language options may not properly appear on the head unit display.

If the welcome screen showing language options is not displayed, complete the following steps:

1. Select the Settings option (gear icon).
2. Scroll down and select the Info & Security option.
3. The System Reset dialogue box will appear. Select Reset to confirm the resetting of the system.
4. Confirm that the welcome screen with language options is now displayed.

2026 RX 350, RX 350h, RX 450h+, and RX 500h Pre-Delivery Service (PDS)

Dealer Contact Information for Call Dealer Head Unit Function (Premium Audio Only)

Refer to the *Multimedia System Owner's Manual* to add dealer contact information.

- [2026](#) RX 350, RX 350h, and RX 500h:
Section 2-8 Vehicle settings – Setting Dealer Information
- [2026](#) RX 450h+:
Section 2-8 Vehicle settings – Setting Dealer Information

Navigation — Set Date & Time by GPS

Prior to vehicle delivery, it is necessary to turn the Set date & time by GPS setting to the ON position.

1. Turn the engine switch (power switch) to the ON position (ON mode).
2. Navigate the following menus in the head unit: *Settings – General – Date & Time – Set Date & Time by GPS*.
3. Ensure the Set date & time by GPS function is set to the ON position.

Parking Support Brake System Initialization

After removing and reinstalling the auxiliary battery or the system power supply fuse, you may see the message “[Parking Support Brake System icon] System Stopped See Owner's Manual.” If this message appears, it is necessary to initialize the parking assist ECU (outer mirror origin point learning).

Refer to TIS, applicable model and model year Repair Manual.

- [2026](#) RX 350, RX 350h, RX 450h+, and RX 500h:
Audio / Visual / Telematics – Park Assist / Monitoring – Parking Support Brake System – Initialization