

2026 GX 550 Pre-Delivery Service (PDS)

Service Category General

Section Pre-Delivery Service

Market USA

Toyota Supports
ASE Certification 

Applicability

YEAR(S)	MODEL(S)	ADDITIONAL INFORMATION
2026	GX550	

REVISION NOTICE

April 16, 2026 Rev1:

- **Required Tools & Equipment Section has been updated.**
- **Customize ACC Function Section has been removed.**

Any previous printed versions of this bulletin should be discarded.

Introduction

Pre-Delivery Service (PDS) is a critical step in satisfying our new car customers. Customer feedback indicates the following areas deserve special attention when performing PDS:

- Careful inspection for paint chips/scratches and body dents/dings.
- Proper operation of electrical accessories (including interior light, clock, and radio reset).
- Interior cleanliness.
- Proper function of mechanical systems.

The PDS process helps identify potential vehicle concerns before customer delivery. After completing the PDS process, maintain accurate PDS records by ensuring the required documents listed below are completed and recorded in accordance with Lexus Warranty Policy.

- GTS+ Health Check
- Completed PDS Check Sheet
- Battery Charge Test Print Out
- GTS+ Tire Pressure Information

Customer retention and proper maintenance of vehicles are and have always been a major focus for Lexus. To help remind customers that regular service is essential to the proper maintenance of the vehicle, dealers are required to install a service reminder sticker before delivery. By doing this, customers will be reminded to return to your dealership for service. Your current service reminder sticker may be used.

2026 GX 550 Pre-Delivery Service (PDS)

Introduction (continue)

This bulletin contains the PDS procedures that apply specifically to 2026 model year GX 550 vehicles.

Refer to [L-PDSB-CS001-D](#) the universal *Check Sheet* that contains PDS steps that apply to all 2026 model year Lexus vehicles. To properly perform a complete PDS, you must complete all procedures contained in this TSB as well as the PDS Check Sheet. In addition, if the vehicle is stored for over 30 days, refer to [L-SB-0011-25](#), *Long-Term Vehicle Storage Guidelines*.

Refer to the table below for a definition of terms that may be used in this bulletin.

Table 1.

TERM	ACRONYM	DEFINITION
Conventional Vehicle	CV	A vehicle with only a gasoline engine for propulsion
Electrified Vehicle	EV	A vehicle that utilizes a hybrid, plug-in hybrid, or battery electric system for propulsion
Hybrid Electric Vehicle	HEV	A vehicle with both a gasoline engine and an HV battery
Plug-in Hybrid Electric Vehicle	PHEV	A vehicle with both a gasoline engine and an HV battery that can be charged externally
Battery Electric Vehicle	BEV	A vehicle with only an HV battery that can be charged externally
State of Charge	SOC	The remaining capacity available in a battery
12-Volt	12V	Standard 12V battery used to power electrical systems separate from high voltage components
High Voltage	HV	HV battery used to power the electrified vehicle

2026 GX 550 Pre-Delivery Service (PDS)

Table of Contents

- [Warranty Policy](#) 4
- [Warranty Information](#) 4
- [Required Tools & Equipment](#) 4
- [D/C Cut Fuse Installation](#) 5
- [Front License Plate and Mounting Bracket Installation*](#) 6
- [Check Torque of Wheel Fasteners](#) 7
- [Tire Pressure Warning System \(TPWS\) Initialization](#) 8
- [Seating Position Control ECU Initialization](#) 8
- [Head Unit System Reset](#) 8
- [Dealer Contact Information for Call Dealer Head Unit Function](#) 9
- [Navigation — Set Date & Time by GPS](#) 9

*If applicable.

2026 GX 550 Pre-Delivery Service (PDS)

Warranty Policy

If the need for additional repairs or adjustment is noted during PDS, the required service should be performed under warranty. Reimbursement will be managed under the warranty policy.

The Warranty Policy and Procedures Manual requires that you maintain the completed Check Sheet in the customer's file. If you cannot produce a completed form for each retailed vehicle upon TMS and/or Region/Distributor audit, the PDS payment amount will be subject to debit.

An additional Repair Order completed in conjunction with normal PDS MUST have time punch/flags for service. If multiple repairs are performed, separate time flags MUST be punched for each repair.

Warranty Information

OP CODE	DESCRIPTION	TIME	OFF	T1	T2
N/A	Not Applicable to Warranty	-	-	-	-

Required Tools & Equipment

REQUIRED EQUIPMENT	SUPPLIER	PART NUMBER	QTY
Techstream ADVi*	ADE	TSADVUNITECP	1
Techstream Lite		TSLP3DLR01	
Techstream Lite (Green Cable)		TSLP2DLR01	

*Essential SST.

NOTE

- Only ONE of the Techstream units listed above is required.
- GTS+ software version 2026.01.003.02 or later is required.
- Additional Techstream units may be ordered by calling Approved Dealer Equipment (ADE) at 1-800-368-6787 or by visiting *TIS – Diagnostics – Tools & Equipment – Techstream Order Portal*.

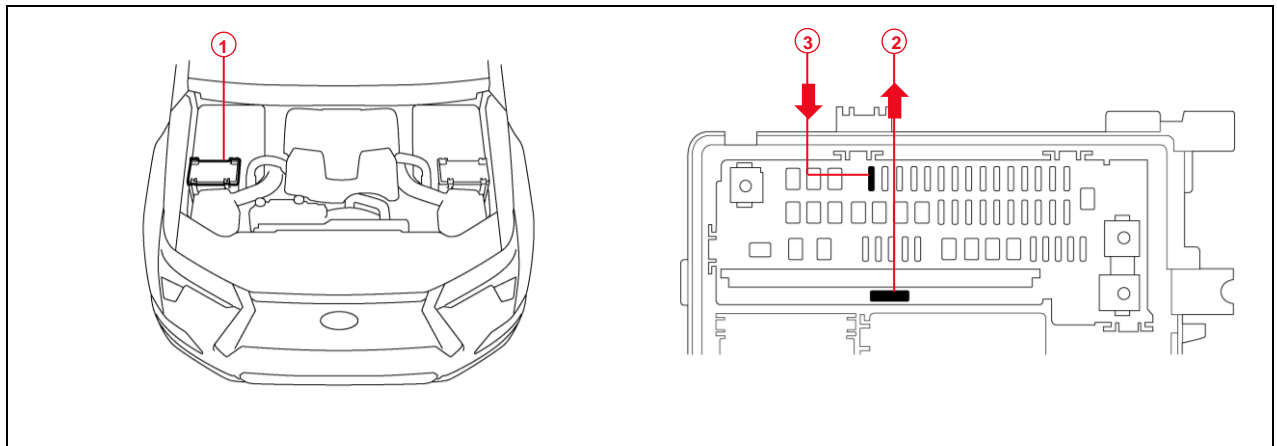
2026 GX 550 Pre-Delivery Service (PDS)

D/C Cut Fuse Installation

Check the location of the D/C Cut fuse (30A). It may have been removed at the assembly plant and temporarily stored in the blank space of the relay block in the engine compartment to minimize battery discharge during transportation and storage.

- If the D/C Cut fuse (30A) is still in its original location in the relay block, proceed with performing a Health Check using GTS+.
- If the D/C Cut fuse (30A) is NOT in its original location, it is necessary to remove the D/C Cut fuse (30A) from the blank space in the relay block and reinstall it to its original location as shown. After installation, confirm ALL related DTCs are cleared.

Figure 1.



1	Relay Block
2	Remove the D/C Cut Fuse (30A) (Blank Space)

3	Install the D/C Cut Fuse (30A) (Original Location)
----------	---

NOTE

- With the D/C Cut fuse (30A) removed, if ANY DTCs are detected when the ignition is turned ON during transportation, use GTS+ to clear ALL DTCs AFTER ensuring that there are NO malfunctions.
- While the vehicle is stored at the dealership, disconnect the negative (-) battery terminal to prevent battery discharge. Refer to [L-SB-0019-25](#), *Battery Inspection and Maintenance During PDS*, for battery maintenance information.

2026 GX 550 Pre-Delivery Service (PDS)

Front License Plate and Mounting Bracket Installation

The front license mounting plate bracket and two self-tapping screws are loaded in the vehicle at the assembly plant. Follow this procedure to install the front license plate mounting bracket and front license plate in states where it is required by law.

1. Align attachment point “A” of the mounting bracket with the dimples on the front bumper.

NOTE

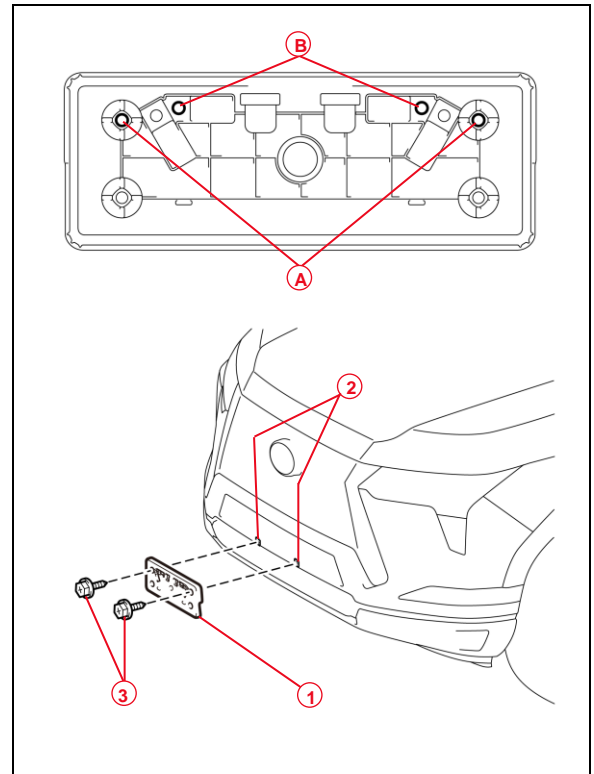
- Attachment point “A” is used for installation of the front license plate mounting bracket to the front bumper.
- Attachment point “B” is used to install the license plate onto the mounting bracket.

2. Install the front license plate mounting bracket to the front bumper using two self-tapping screws.

NOTICE

- Do NOT overtighten the self-tapping screws.
- Do not pre-drill holes in the dimples.

Figure 2.



A	Attachment point “A” for Mounting Bracket
B	Attachment point “B” for Front License Plate
1	Mounting Bracket
2	Dimples
3	Self-tapping Screws

2026 GX 550 Pre-Delivery Service (PDS)

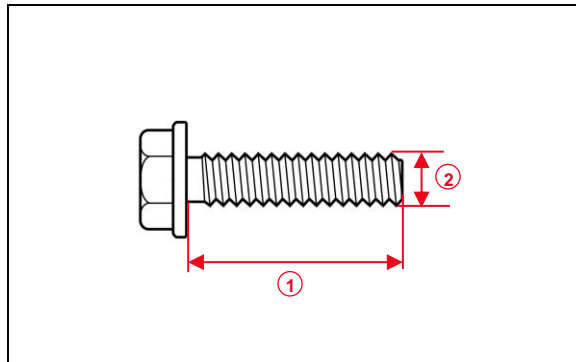
Front License Plate and Mounting Bracket Installation (continued)

3. Install the front license plate to the mounting bracket using two non-corroding bolts with the following dimensions:

Length: 15.0 mm (0.59 in.)

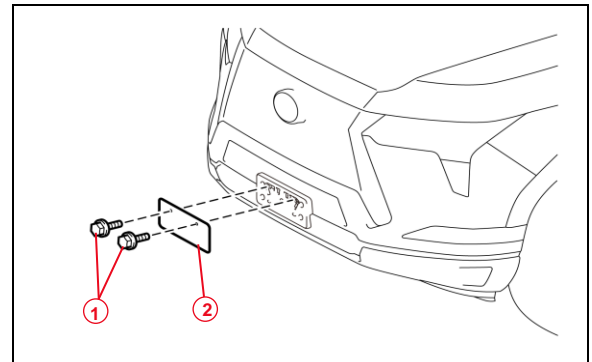
Diameter: 6.0 mm (0.24 in.)

Figure 3.



1	Length
2	Diameter

Figure 4.



1	Bolts
2	Front License Plate

Check Torque of Wheel Fasteners

Using a calibrated torque wrench, verify the wheel fasteners on each wheel are tightened to at least the specified torque listed in the Repair Manual.

- [2026 GX 550](#):
General – Maintenance – Tire and Wheel – Installation

NOTICE

Do NOT continue to tighten once verified.

2026 GX 550 Pre-Delivery Service (PDS)

Tire Pressure Warning System (TPWS) Initialization

Refer to the applicable Repair Manual for the TPWS initialization procedure.

- [2026](#) GX 550:

Suspension – Tire Pressure Monitoring – Tire Pressure Warning Receiver – Initialization

NOTE

- When the outside temperature is significantly colder than the shop's temperature, or there is a significant ambient temperature change overnight, use GTS+ to determine the proper tire pressure.
- From the Health Check Result Status pane, select the refresh button within the Compensation Pressure data display.
- This model has five TPWS sensors.

Seating Position Control ECU Initialization

Refer to the applicable Repair Manual for the seating position control ECU Initialization procedure (procedure 2).

- [2026](#) GX 550:

Vehicle Interior – Seat – Front Power Seat Control System – Registration

Head Unit System Reset

Prior to vehicle delivery confirm radio displays the welcome screen with language options when Ignition is ON.

If the welcome screen with language options does not display complete the following steps:

1. Turn the engine switch (power switch) to the ON position (ON mode).
2. Enter the Following menus: *Settings – Info & Security – Info & Security Reset.*
3. Select yes when the system reset dialogue box appears.
4. Cycle engine switch (power switch) OFF – ON to confirm welcome screen appears.

2026 GX 550 Pre-Delivery Service (PDS)

Dealer Contact Information for Call Dealer Head Unit Function

Refer to the *Multimedia System Owner's Manual* to add dealer contact information.

- [2026 GX 550](#):
Section 2-8 *Vehicle Settings – Setting Dealer Information*

Navigation — Set Date & Time by GPS

Prior to vehicle delivery, it is necessary to turn the Set date & time by GPS setting to the ON position.

1. Turn the engine switch (power switch) to the ON position (ON mode).
2. Navigate the following menus in the head unit: *Settings – General – Date & Time – Set Date & Time by GPS*.
3. Ensure the Set date & time by GPS function is set to the ON position.