

Peeling Panoramic Roof Center Glass Weatherstrip

Service Category Vehicle Exterior

Section Sliding Roof/Convertible

Market USA

Toyota Supports
 ASE Certification 

Applicability

YEAR(S)	MODEL(S)	ADDITIONAL INFORMATION
2018 - 2026	Camry HV	
2018 - 2024	Camry	

REVISION NOTICE

April 14, 2026 Rev1:

- Applicability has been updated to include 2025 – 2026 model year Camry Hybrid vehicles. Any previous printed versions of this bulletin should be discarded.

SUPERSESSON NOTICE

The information contained in this bulletin supersedes Service Bulletin T-SB-0116-20.

- Applicability has been updated to include 2023 – 2024 model year Camry and Camry Hybrid vehicles. Service Bulletin T-SB-0116-20 is obsolete and any printed versions should be discarded.

Introduction

Some 2018 – 2024 model year Camry and 2018 – 2026 model year Camry Hybrid vehicles may exhibit the weatherstrip on the panoramic roof center glass peeling on the edges of the glass. Follow the Repair Procedure in this bulletin to address this condition.

Peeling Panoramic Roof Center Glass Weatherstrip

Warranty Information

OP CODE	DESCRIPTION	TIME	OFF	T1	T2
BD2004	R & R the Sliding Roof Weatherstrip	1.0	63251-#####*	62	15

*Warranty claim MUST be submitted with the correct 10-digit OFF. Choose the correct OFF for the vehicle being repaired by searching for the parts in the Electronic Parts Catalog using the VIN filter.

APPLICABLE WARRANTY

- This repair is covered under the Toyota Basic Warranty. This warranty is in effect for 36 months or 36,000 miles, whichever occurs first, from the vehicle's in-service date.
- Warranty application is limited to occurrence of the specified condition described in this bulletin.

Parts Information

PART NUMBER	PART NAME	QTY
63251-06100	Weatherstrip, Sliding Roof	1

Required Tools & Equipment

REQUIRED TOOLS & MATERIAL	QTY
3M™ 94 Primer	1
180-grit Sandpaper	1
Isopropyl Alcohol 70%	1

Peeling Panoramic Roof Center Glass Weatherstrip

Repair Procedure

1. Confirm the condition exists.
 Does the vehicle exhibit the weatherstrip on the panoramic roof center glass peeling on the edges of the glass?
 - **YES** — Continue to step 2.
 - **NO** — This bulletin does NOT apply. Continue diagnosis using the applicable Repair Manual.

2. Place tape on the glass near the left-hand side AND right-hand side corners to avoid scratching the glass (at least one-fourth the width of the glass). The left-hand side corner is shown; repeat the process for the right-hand side.

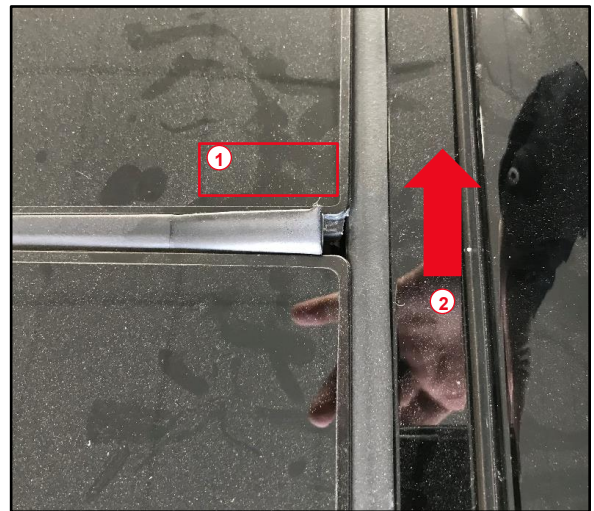
3. Remove the existing weatherstrip.

Figure 1.



1	Peeling Weatherstrip
----------	-----------------------------

Figure 2. Left-hand Side Corner



1	Place Tape Here
2	Back of the Vehicle

Figure 3.

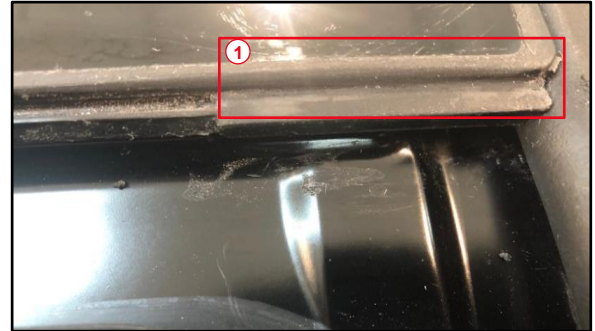


Peeling Panoramic Roof Center Glass Weatherstrip

Repair Procedure (continued)

4. Clean the rims using 180-grit sandpaper.

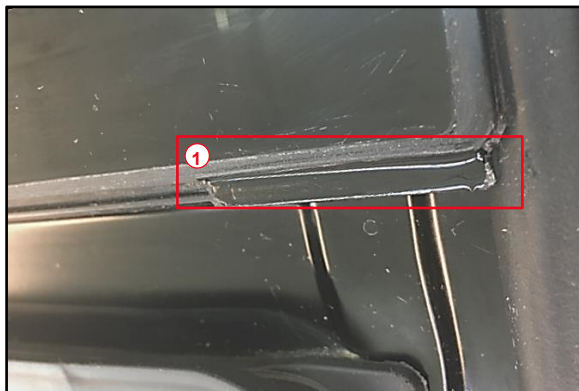
Figure 4.



1	Rim Area
----------	-----------------

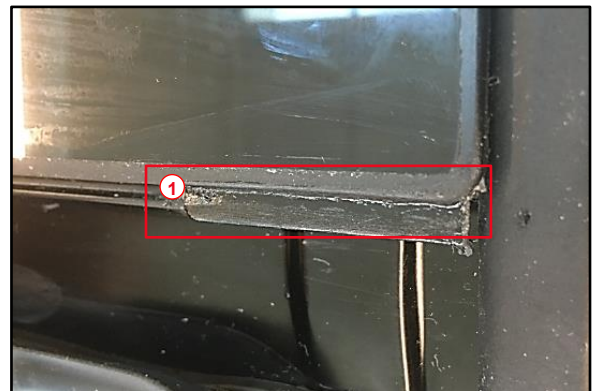
5. Clean the rim with isopropyl alcohol until the surface is smooth and black.
6. Apply 3M™ 94 Primer and let it dry for AT LEAST 90 seconds. Make sure the shine is gone BEFORE proceeding.

Figure 5. Wet Primer



1	Rim Area
----------	-----------------

Figure 6. Dry Primer



1	Rim Area
----------	-----------------

Peeling Panoramic Roof Center Glass Weatherstrip

Repair Procedure (continued)

7. Line up the ends of the weatherstrip to the edges and make sure both ends align properly.

Figure 7.



8. Press the mechanical lock on the ridges on both ends as shown.

Figure 8.



NOTE

The ridge is the point where the rim ends on the inside.

9. Once the edges are secured, engage the center of the weatherstrip and continue toward the ends. Verify the entire length of the weatherstrip is engaged in the mechanical lock.

NOTE

The entire middle area has mechanical locking to secure the weatherstrip.

Figure 9.



Peeling Panoramic Roof Center Glass Weatherstrip

Repair Procedure (continued)

10. Remove the cover tape on the ends of the weatherstrip and push the ends onto the rims on both sides. Press firmly on the rim area of the weatherstrip to ensure proper adhesion. Hold and press firmly for five to seven seconds.

Figure 10.



Figure 11.



11. AFTER the repair is complete, allow the adhesive to cure for AT LEAST 24 hours.

NOTICE

- Allow the adhesive to cure for 24 hours.
- Do NOT wash the vehicle for 24 hours.
- Keep the vehicle away from water and rain for 24 hours.