

MIL ON P140018 - Loose Pin Tension at EGR Connector

Service Category Engine/Hybrid System

Market USA and
Mexico

Section Engine Control

Toyota Supports
ASE Certification 

Applicability

YEAR(S)	MODEL(S)	ADDITIONAL INFORMATION
2021 - 2024	Camry	
2021 - 2025	RAV4	

Introduction

Some customers may experience a rough running engine with a MIL ON P140018 DTC. Upon further inspection, a loose C90/C27 connector pin at the EGR valve may be found. To correct this concern, please reference the repair section of this TSB.

MIL ON P140018 - Loose Pin Tension at EGR Connector

Warranty Information

For USA Market

OP CODE	DESCRIPTION	TIME	OFP	T1	T2
EL2601	Terminal Wire Repair	0.5	82121-#####*	02	57

*Warranty claim MUST be submitted with the correct 10-digit OFP. Choose the correct OFP for the vehicle being repaired by searching for the parts in the Electronic Parts Catalog using the VIN filter.

APPLICABLE WARRANTY

- This repair is covered under the Toyota Basic Warranty. This warranty is in effect for 36 months or 36,000 miles, whichever occurs first, from the vehicle's in-service date.
- Warranty application is limited to occurrence of the specified condition described in this bulletin.

For Mexico Market

OP CODE	DESCRIPTION	TIME	OFP	T1	T2
EL2601	Terminal Wire Repair	0.5	82121-#####*	02	57

*Warranty claim MUST be submitted with the correct 10-digit OFP. Choose the correct OFP for the vehicle being repaired by searching for the parts in the Electronic Parts Catalog using the VIN filter.

APPLICABLE WARRANTY

- This repair is covered under the Toyota Basic Warranty. This warranty is in effect for 36 months or 60,000 kilometers, whichever occurs first, from the vehicle's in-service date
- Warranty application is limited to occurrence of the specified condition described in this bulletin.

MIL ON P140018 - Loose Pin Tension at EGR Connector

Parts Information

PART NUMBER	PART NAME	QTY
90980-12495	Housing, Connector F	1
82998-74030	Terminal, Repair W/W	1 – 4

*Order appropriate number of terminals based on number of loose terminals found.

PART NUMBER	PART NAME	QTY
82121-06F80	Wire/Engine	-
82121-06J60		
82121-0680		
82121-06L31		
82121-0R170		
82121-0R171		
82121-0R200		
82121-0R220		
82121-0R221		
82121-0R222		
82121-0R270		
82121-0R271		
82121-0R280		
82121-0R281		
82121-0R282		
82121-0R300		
82121-0R390		
82121-0R391		
82121-0R392		
82121-0R393		
82121-0R520		
82121-0R521		

Parts Information (continued)

MIL ON P140018 - Loose Pin Tension at EGR Connector

PART NUMBER	PART NAME	QTY
82121-0R522	Wire/Engine	-
82121-42K30		
82121-42K31		
82121-42K80		
82121-42K81		
82121-42L00		
82121-42L01		
82121-42L01		
82121-42N31		
82121-42Q20		
82121-42Q21		
82121-42Q50		
82121-42Q51		
82121-42T70		
82121-42T71		
82121-42T72		
82121-42U80		
82121-42U90		

NOTE

The wire harness should NOT be replaced as part of the Repair Procedures.

MIL ON P140018 - Loose Pin Tension at EGR Connector

Required Tools & Equipment

SPECIAL SERVICE TOOLS (SST)	PART NUMBER	QTY
Lance canceling tool No. 2	09991-00530	1
Clipping tool S	09929-00020	1
Electrical tape	N/A	1

NOTE

Additional SSTs may be ordered by calling 1-800-933-8335 or +(525) 5550 10 3000 (Mexico) or by visiting *Home – Service Resources – Toyota Tools and Equipment Program*.

*Essential SST.

REQUIRED TOOLS & MATERIAL	QUANTITY
Nippers (For Cutting Wiring)	1
Caliper (For Measuring Core Diameter)	1
Dryer/Heat Gun (For Heating Shrink Sleeve)	1
Wood Plate (For Heat Shielding, 300mm x 100mm x 10mm)	1

REQUIRED EQUIPMENT	SUPPLIER	PART NUMBER	QTY
Techstream ADVi*	ADE	TSADVUNITECP	1
Techstream Lite		TSLP3DLR01	
Techstream Lite (Green Cable)		TSLP2DLR01	

*Essential SST

NOTE

- Only ONE of the Techstream units listed above is required.
- Software version 2026.01.003.02 or later is required.
- Additional Techstream units may be ordered by calling Approved Dealer Equipment (ADE) at 1-800-368-6787 (USA) or +(525) 5550 10 3000 (Mexico) or by visiting *TIS – Diagnostics – Tools & Equipment – Techstream Order Portal*.

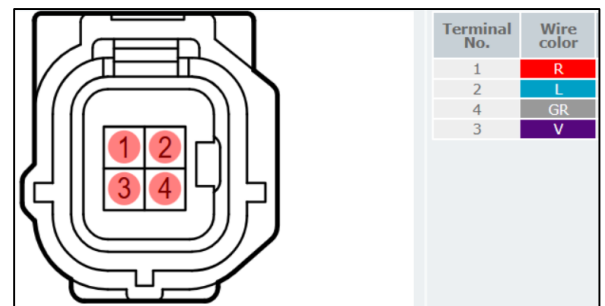
MIL ON P140018 - Loose Pin Tension at EGR Connector

Repair Procedure

1. Confirm the condition exists.
Does the vehicle engine exhibit rough running with MIL ON P140018 DTC?
 - **YES** — Continue to step 2.
 - **NO** — This bulletin does NOT apply. Continue diagnosis using the applicable Repair Manual.

2. Inspect C90/C27 connector at EGR valve and confirm if there are one or more loose terminals as seen in Figure 1. (Often terminal #4 is found to be loose but inspect all four as more than one terminal may be of concern). Are there one or more loose terminals?
 - **YES** — Continue to the applicable step according to the model applicability.
 - A. For RAV4, continue to step 3.
 - B. For Camry, continue to step 4.
 - **NO** — This bulletin does NOT apply. Continue diagnosis using the applicable Repair Manual.

Figure 1.



1	R
2	L
3	V
4	GR

MIL ON P140018 - Loose Pin Tension at EGR Connector

Repair Procedure

3. Remove the outer connector cover and replace all affected terminals shown in Figure 2.
 - A. Access the electrical wiring diagram.
 - B. Refer to TIS, applicable model and model year Electrical Wiring Diagram as shown in Figure 3.
 - 2021 – 2025 RAV4:
 - EWD – General – Introduction*
- (1) Input Division/Model/Year and click search.
 - (2) Select EWD tab.
 - (3) Click the first link:
 - General: INTRODUCTION*

Figure 2.

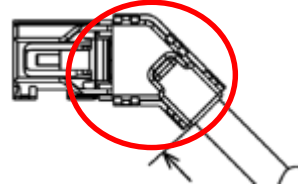
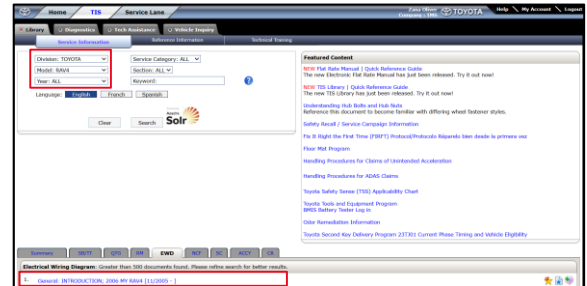


Figure 3.



MIL ON P140018 - Loose Pin Tension at EGR Connector

Repair Procedure (continued)

C. Refer to TIS, applicable model and model year Electrical Wiring Diagram as shown in Figure 4.

- 2021 – 2025 RAV4:
 - System Circuit – Engine / Hybrid System – Engine Control (A25A-FKS) – EGR Valve Assembly

- Click the orange component box in the bottom right corner (Figure 4).
- Click Wire Harness Repair shown in Figure 5.
- Follow the repair guidelines and procedures shown in Figure 6.
- Continue to step 5.

Figure 4.

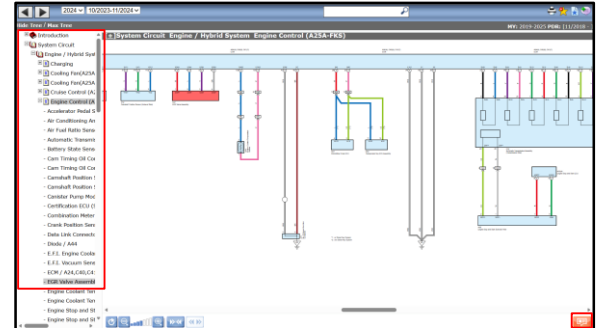
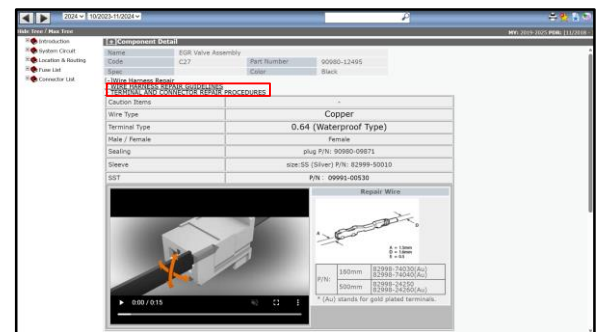


Figure 5.



Figure 6.



MIL ON P140018 - Loose Pin Tension at EGR Connector

Repair Procedure (continued)

4. Remove the outer connector cover and replace all affected terminals as shown in Figure 2.
 - A. Access the electrical wiring diagram.
 - B. Refer to TIS, applicable model and model year Electrical Wiring Diagram as shown in Figure 7.
 - 2021 – 2024 Camry:
 - EWD – General – Introduction*
 - (1) Input Division/Model/Year and click search.
 - (2) Select EWD tab.
 - Click the first link:
 - General: INTRODUCTION*
 - C. Refer to TIS, applicable model and model year Electrical Wiring Diagram as shown in Figure 8.
 - 2021 – 2024 Camry:
 - System Circuit – Engine / Hybrid System – Engine Control (A25A-FKS) – EGR Valve Assembly*
 - (5) Click the orange component box in the bottom right corner (Figure 9).
 - (6) Click Wire Harness Repair as shown in Figure 10.
- Follow the repair guidelines and procedures as shown in Figure 10.

Figure 7.

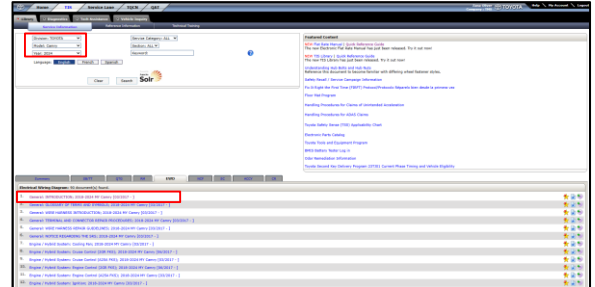


Figure 8.

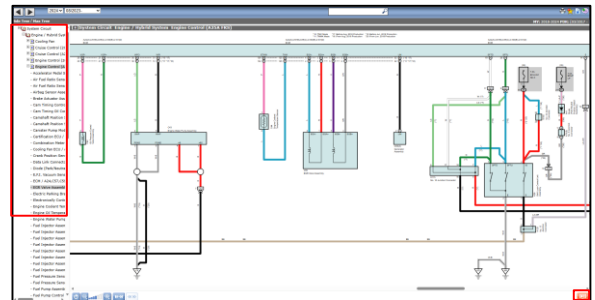


Figure 9.

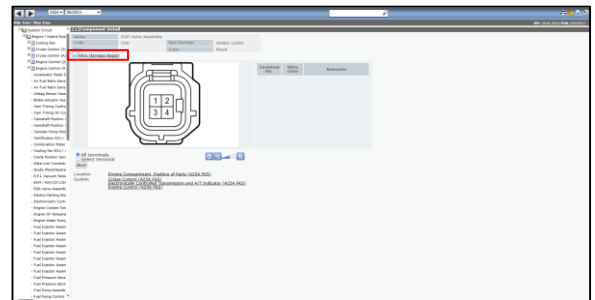
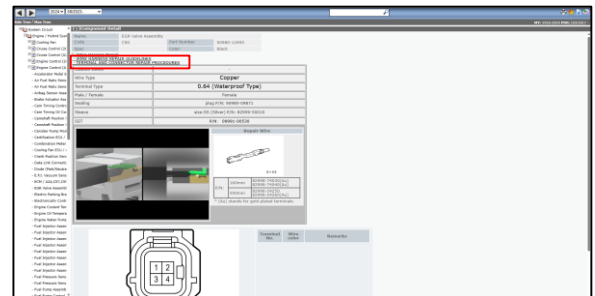


Figure 10.

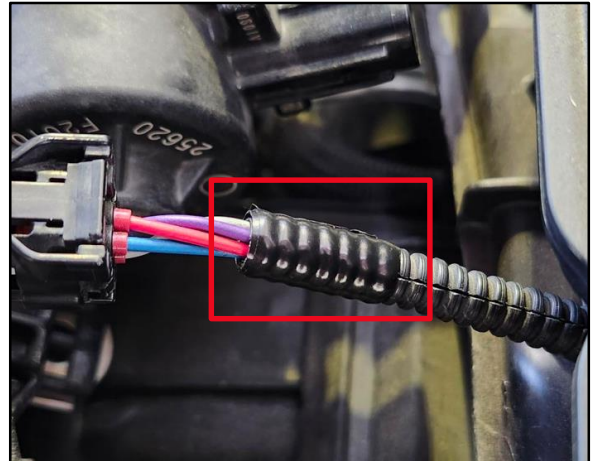


MIL ON P140018 - Loose Pin Tension at EGR Connector

Repair Procedure (continued)

5. Do not reinstall outer connector cover.
6. Using electrical tape, wrap the end of wire loom to secure it (see photo).

Figure 11. Wire Wrapped in Electrical Tape



7. Reconnect the connector to EGR valve.
8. Using GTS+, clear ANY DTCs and test-drive the vehicle to confirm the condition is no longer present.