

Driver Assistance Systems Not Available when Starting a Journey with Cold/Wet Weather - Misting/Lugging Front Camera Area (SY 15/26)

Model Line: **Taycan (Y1A/Y1B/Y1C)**

Model Year: **2025**

Concerns: **Front camera/central control unit for assistance systems (ZFAS)**

Symptom: Various driver assistance systems are not available when readiness for operation is established in conjunction with cold/moist weather. White messages are displayed on the instrument cluster, e.g.:

- Assistance systems currently reduced
- Lane Keep Assist currently not available
- Active Lane Keeping currently not available
- Speed limit display not available
- Proactive occupant protection currently reduced
- Warn and Brake Assist reduced
- Driving light control fault
- Emergency stop function currently not available

After a short journey, all driver assistance systems are available and no further information messages are displayed.

The following fault memory entry is **passively** stored in the fault memory of the control unit for assistance systems (ZFAS):

- **C12B3FD** - Front camera for driver assistance systems, temporary visual impairment (036064)

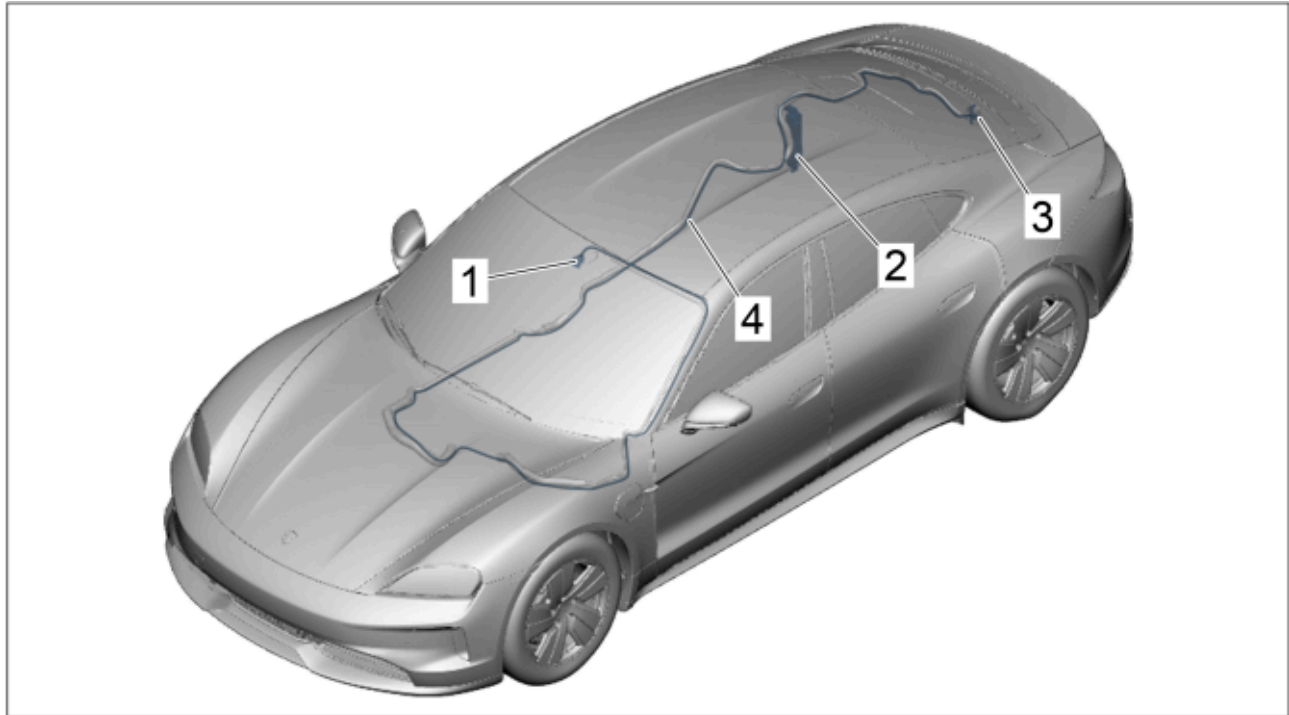
Cause: Due to cold/wet weather conditions, the windshield can mist up and/or ice up in the interior of the camera. As a result, camera vision is restricted. This can lead to the failure of various driver assistance systems.

Remedial Action: In the event of a complaint with regard to the specified weather conditions and if there are no further fault memory entries in the control unit for assistance systems (ZFAS), install new glare cover with integrated heating film and electric wire harness.

Date of Introduction: From 07/01/2025 or from the chassis number WPOZZZY17TSA00023, the new glare cover with heating film is already used in production.

Installation

Position:



Installation position of dipped beam cover and electric wire harness

- 1 – Scattered light cover
- 2 – Rear fuse box
- 3 – Electric plug connection
- 4 – Electric wire harness

Required parts and materials

| Parts Information: | Part No. | Designation | Quantity |
|--------------------|-------------|-------------------------|----------|
| | 9J1858066C | ⇒ Cover for camera | 1 piece |
| | 9J1970728AY | ⇒ Wiring harness | 1 piece |
| | N 01713116 | ⇒ 5-amp blade-type fuse | 1 piece |

Material: **Required materials** (usually already available in the Porsche Center)

| Part No. | Designation | Quantity |
|----------|--|-------------|
| ... | ⇒ Fabric tape, approx. 19 mm wide – e.g. TESA 51026 | As required |
| ... | ⇒ Cable tie – Commercially available | As required |

Required tools

- Tools:
- **P90999 - Porsche Tester 4**
 - Battery charger with a current rating of **at least 90 A** and a **current and voltage-controlled charge map** for lithium starter batteries, e.g. **VAS 5908 battery charger 90 A**. For further information about the battery chargers to be used, see the corresponding Workshop Manual. ⇒ *Workshop Manual '270689 Charging vehicle electrical system battery'*
 - Torque wrench, 0.4-2 Nm (0.3-1.5 ftlb.), e.g., **VAS 6253A - torque wrench, 0.4-2 Nm (0.3-1.5 ftlb.)**
 - Torque wrench 2-10 Nm (2-8 ftlb.), e.g. **V.A.G 1783 - torque wrench 2-10 Nm (2-8 ftlb.)**
 - Torque wrench 6-50 Nm (4.5-37 ftlb.), e.g. **V.A.G 1331A - torque wrench 6-50 Nm (4.5-37 ftlb.)**
 - Plastic wedge, commercially available
 - Cable pull-in aid, commercially available **or** welding wire with bent ends
 - **3438 - Hooks**

Preparatory work

- Work Procedure:
- 1 Loosen ground strap on battery.
For instructions, see: ⇒ *Workshop Manual '978519A1 Remove and install ground strap for battery'*
 - 2 Loosen rear fuse box.
⇒ *Workshop Manual '978409A3 Loosen and fasten rear fuse box'*
 - 3 Remove the (front) left and right inner door sill trim.
⇒ *Workshop Manual '680519A2 Remove and install the (front) inner door sill trim'*
 - 4 Remove cover under dashboard (on driver's side).
⇒ *Workshop Manual '702219A8 Remove and install cover under dashboard (driver side)'*
 - 5 Remove cover under dashboard (on passenger's side).
⇒ *Workshop Manual '702219A7 Remove and install cover under dashboard (on passenger's side)'*
 - 6 Removing center support trim (center) at the bottom on the passenger's side.
⇒ *Workshop Manual '681419 Remove and install centre support trim (centre) at the bottom'*
 - 7 Remove A-pillar trim panel on the left.
⇒ *Workshop Manual '705719A6 Remove and install A-pillar trim panel'*

- 8 Remove the left sun visor.
⇒ *Workshop Manual '682319A1 Remove and install the sun visor'*
- 9 Remove the front roof console.
⇒ *Workshop Manual '708319A4 Remove and install front overhead console'*
- 10 Loosen front left roof trim panel in the area between the A-pillar and front camera.
For instructions, see: ⇒ *Workshop Manual '708419A4 Remove and install roof trim panel'*

Installing new lens hood with integrated heating film and electric wire harness

- Work Procedure: 1 Remove previous glare cover.
For instructions, see: ⇒ *Workshop Manual '963819 Removing and installing front camera cover'*

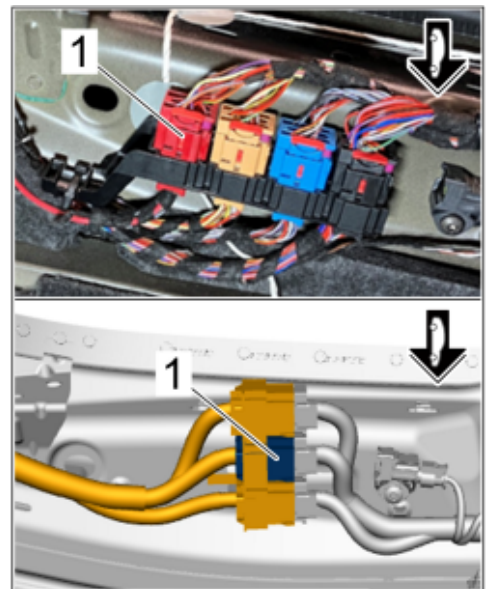


Information

The arrangement of electric plug connections in the luggage compartment can vary depending on the equipment.

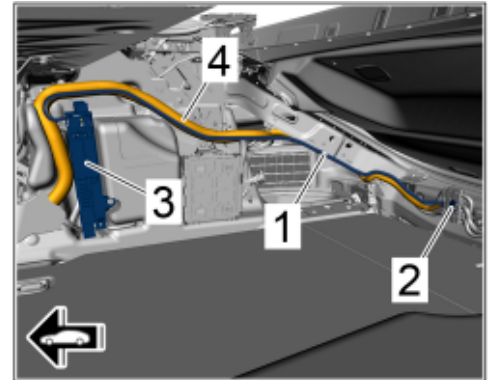
Depending on the equipment, an electric line in the colors "**red/white**" or "**red/black**" is installed in **chamber 16**.

- 2 **Install new** electric wire harness on the electric plug connection ⇒ *Arrangement of plug connections depending on equipment -1-* in the luggage compartment.
 - 2.1 Release red electric plug connection ⇒ *Arrangement of plug connections depending on equipment -1-* and disconnect it.
 - 2.2 Unpin the previous electric line on the connector housing (coming from the right luggage compartment side) from **chamber 16**.
 - 2.3 Secure and insulate the previous electrical line at a suitable point. This is no longer needed.
 - 2.4 Insert **new** electric wire harness with the electric line "**red/white**" into **chamber 16**.



Arrangement of plug connections depending on equipment

- 3 **Route and connect new** electric wire harness ⇒
Electric wire harness luggage compartment -1- from
 electric plug connection ⇒ *Electric wire harness
 luggage compartment -2-* in the direction of the rear
 fuse box ⇒ *Electric wire harness luggage compartment
 -3-* along the main wire harness ⇒ *Electric wire harness
 luggage compartment -4-*.



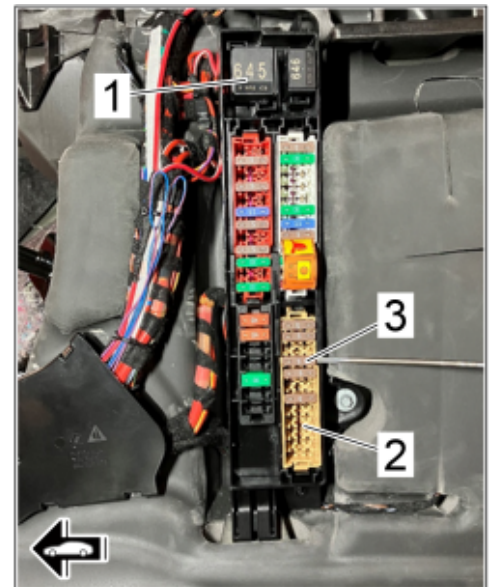
Electric wire harness luggage compartment



Information

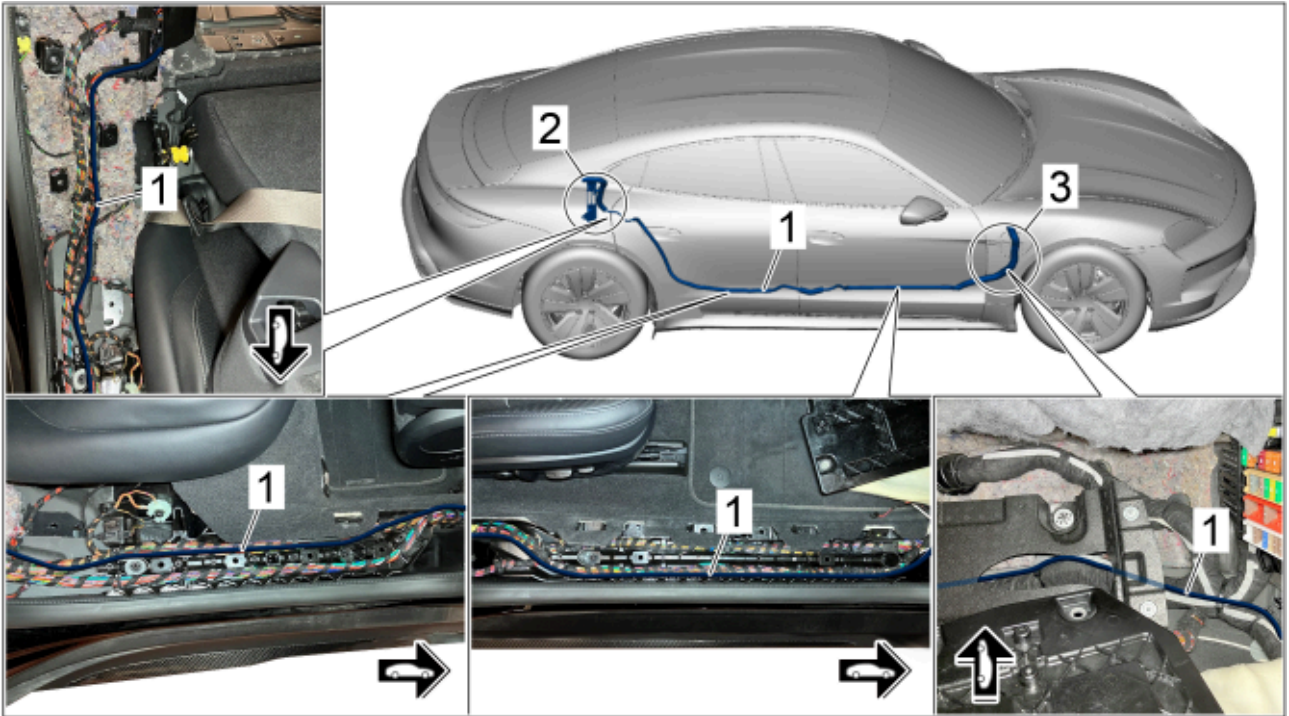
Depending on equipment, an electric line in the colors "red/white" or "red/black" is installed in **chamber A5**.

- 4 **Install new** electric wire harness on rear fuse box.
- 4.1 Unpin previous electric line from the relay slot ⇒ *Rear fuse box -1-* from **chamber A5**.
 - 4.2 Secure and insulate the previous electrical line at a suitable point. This is no longer needed.
 - 4.3 Insert **new** electric wire harness with the electric line "red/white" into **chamber A5**.
 - 4.4 Insert the other "red/white" and "blue/red" electric lines at **slot 4** ⇒ *Rear fuse box -3-* of the fuse carrier ⇒ *Rear fuse box -2-* at the bottom right and install a **5-amp** fuse.



Rear fuse box

- 5 **Route and connect new** electric wire harness ⇒
*Electric wire harness (fuse box to passenger footwell)
 -1-* from rear fuse box ⇒ *Electric wire harness (fuse
 box to passenger footwell) -2-* in the direction of the
 passenger footwell ⇒ *Electric wire harness (fuse box
 to passenger footwell) -3-*, along the main wire harness.



Electric wire harness (fuse box to passenger footwell)

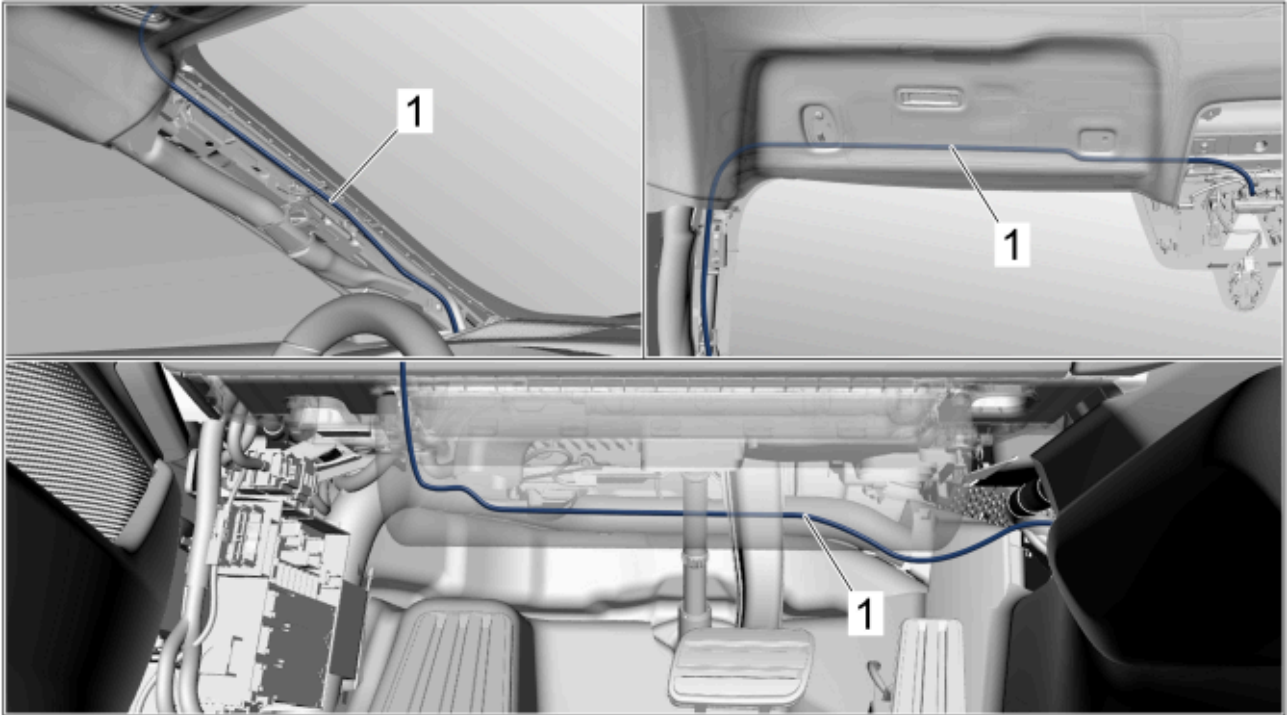
- 6 Route and connect **new** electric wire harness ⇒ *Electric wire harness under dashboard -1-* from passenger footwell in the direction of the driver footwell.



Electric wire harness under dashboard

- 6.1 Lift up floor covering in passenger footwell until the main wire harness is accessible.
- 6.2 **Guide new** electric wire harness ⇒ *Electric wire harness under dashboard -1-* from passenger footwell with the **cable puller in** the direction of the driver footwell.
- 6.3 Fasten **new** electric wire harness ⇒ *Electric wire harness under dashboard -1-* on the main wire harness in the footwells and under the dashboard using suitable aids. Prevent abrasion points in the installation area or mask them if necessary.

- 7 Route and connect **new** electric wire harness ⇒ *Electric wire harness for driver footwell to roof -1-* from the driver footwell towards the front camera along the A-pillar.



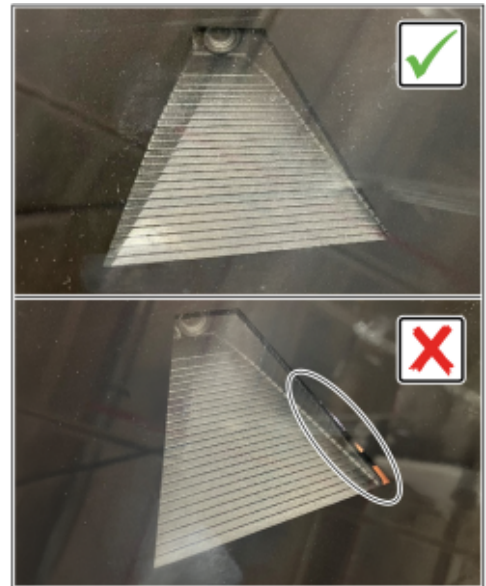
Electric wire harness for driver footwell to roof

- 7.1 **Guide new** electric wire harness ⇒ *Electric wire harness for driver footwell to roof -1-* from the driver footwell in the direction of the A-pillar using **the cable pull-in aid**.
- 7.2 Guide **new** electric wire harness ⇒ *Electric wire harness for driver footwell to roof -1-* along the A-pillar to the front camera.
- 7.3 **Coat new** electric wire harness ⇒ *Electric wire harness for driver footwell to roof -1-* from the driver footwell along the A-pillar to the front camera using suitable means. Prevent abrasion points in the installation area or mask them if necessary.
- 8 Unpin the two "**red/white**" and "**black/yellow**" electric lines from the previous **two-pin connector housing** of the electric wire harness of the diffusing light cover and insert them on the **three-pin connector housing** of the **new** electric wire harness.
- 8.1 Insert "**red/white**" electric line into **chamber 1** on the three-pin connector housing.
- 8.2 Insert "**black/yellow**" electric line into **chamber 2** on the three-pin connector housing.
- 9 Install **new** lens hood.
For instructions, see: ⇒ *Workshop Manual '963819 Removing and installing front camera cover'*



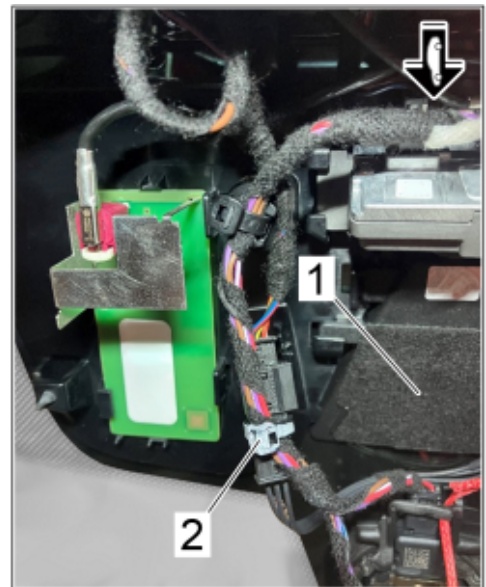
Information

The lens hood must be closed on the windshield.



Scattered light cover

- 10 Fasten **new** wire harness next to the scattered light cover ⇒ *Cable tie -2-* to the electric wire harness of the rain sensor ⇒ *Cable tie -1-* using a tie-wrap.



Cable tie

Follow-up actions

- Work Procedure: 1 Fasten the front roof trim panel.
For instructions, see: ⇒ *Workshop Manual '708419A4 Remove and install roof trim panel'*
- 2 Install front roof console.
⇒ *Workshop Manual '708319A4 Remove and install front overhead console'*
- 3 Install the left sun visor.
⇒ *Workshop Manual '682319A1 Remove and install the sun visor'*
- 4 Install A-pillar trim panel on the left.
⇒ *Workshop Manual '705719A6 Remove and install A-pillar trim panel'*
- 5 Install center support trim (center) at the bottom on the passenger side.
⇒ *Workshop Manual '681419 Remove and install centre support trim (centre) at the bottom'*
- 6 Install cover under dashboard (passenger's side).
⇒ *Workshop Manual '702219A7 Remove and install cover under dashboard (on passenger's side)'*
- 7 Install cover under dashboard (driver's side).
⇒ *Workshop Manual '702219A8 Remove and install cover under dashboard (driver side)'*
- 8 Install the (front) left and right inner door sill trim.
⇒ *Workshop Manual '680519A2 Remove and install the (front) inner door sill trim'*
- 9 Fasten rear fuse box.
⇒ *Workshop Manual '978409A3 Loosen and fasten rear fuse box'*
- 10 Fasten the ground strap to the battery.
For instructions, see: ⇒ *Workshop Manual '978519A1 Remove and install ground strap for battery'*
- 11 Check release of the control unit for assistance systems (ZFAS) and air-conditioning system software.
⇒ *Technical Information '978519A1 Check release of the control unit for assistance systems (ZFAS) and air-conditioning system software'*

Check release of the control unit for assistance systems (ZFAS) and air-conditioning system software

- Work Procedure: 1 Connect and switch on the battery charger.
⇒ *Workshop Manual '270689A4 Charge battery and vehicle electrical system'*
- 2 Place original remote control in emergency start tray.
- 3 Connect **P90999 - Porsche Tester 4**, establish readiness for operation and start the diagnostic application.

- 4 Check release of assistance systems control unit software.
- 4.1 In the '**Overview**', select the '**Assistance Systems**' control unit and confirm with **F12** ("Next").
- 4.2 Select the '**Extended identifications**' tab and check the software release.

| Assessment | Action |
|--|--|
| The software release is " 0511 " (or higher). | The software release is up-to-date. Go back to the control unit selection ' Overview '. Continue with Step: ⇒ 5. |
| The software release is lower than "0511" . | The software release does not match the current version. Re-program control unit for assistance systems. Continue with: ⇒ <i>Technical Information '270689A4 Re-programming control unit for assistance systems (ZFAS)'</i> Then continue with Step: ⇒ 5. |

- 5 Check software release for air-conditioning system control unit.
- 5.1 In the '**Overview**', select the '**Air-conditioning system**' control unit and confirm with **F12** ("Next").
- 5.2 Select the '**Extended identifications**' tab and check the software release.

| Assessment | Action |
|--|--|
| The software release is " 1410 " (or higher). | The software release is up-to-date. Go back to the control unit selection ' Overview '. End of action. |
| The software release is lower than "1410" . | The software release does not match the current version. Re-programming air-conditioning system control unit. Continue with: ⇒ <i>Technical Information '270689A4 Re-programming air-conditioning system control unit'</i> |

Re-programming control unit for assistance systems (ZFAS)

Work Procedure: 1 Re-program control unit for assistance systems (ZFAS)

The basic work procedure for control unit programming is described in the Workshop Manual.
 ⇒ *Workshop Manual '9X00IN Basic instructions and procedure for control unit programming using the PIWIS Tester'*

Specific information on control unit programming during this action:

| | |
|--|--|
| Required Porsche Tester software release: | 43.900.030 (or higher) |
| Type of control unit programming: | Control unit programming using the ' Automatic programming ' function of the control unit: Control unit for ' Assistance systems ' – ' Coding/programming ' menu – ' Automatic programming ' function. |
| Programming sequence: | Read and follow the information and instructions on the Porsche Tester during the guided programming sequence. During the programming sequence, the control unit is re-programmed and then automatically re-coded . Do not interrupt the programming and coding process. Backup documentation for the re-programmed software releases starts after programming. |
| Programming duration: | Programming takes up to 100 minutes , depending on equipment. |
| Software programmed during this action: | ▪ Control unit for assistance systems (ZFAS) Software release: 0511 (or higher) Following control unit programming, the software release can be read out from the respective control unit using the Porsche Tester in the menu ⇒ 'Extended identifications'. |
| Procedure if error messages appear during the programming sequence: | ⇒ <i>Workshop Manual '9X00IN Basic instructions and procedure for control unit programming using the PIWIS Tester'</i> |
| Procedure in the event of a termination in the control unit programming: | Repeat control unit programming by restarting programming. |

- 2 Read out and delete all control unit fault memories.
- 3 Press **(F3)** to start the integration test in the control unit selection.
If there is an integration deviation for individual control units, these must be programmed before vehicle handover to the customer.

**Information**

If, despite the programming performed, a deviation is still displayed during the integration test, the test must be carried out again.

There must be no breaches of integration!

Control units with optional software can be ignored – with the exception of the control unit for assistance systems (ZFAS).

- 4 If you have not already done so, check the release of the air-conditioning system control unit software.
 ⇒ *Technical Information '9X00IN Check release of the control unit for assistance systems (ZFAS) and air-conditioning system software'*

Re-programming air-conditioning system control unit

Work Procedure: 1 Re-programming air-conditioning system control unit.

The basic work procedure for control unit programming is described in the Workshop Manual.

⇒ *Workshop Manual '9X00IN Basic instructions and procedure for control unit programming using the PIWIS Tester'*

Specific information on control unit programming during this action:

| | |
|---|--|
| Required Porsche Tester software release: | 43.900.030 (or higher) |
| Type of control unit programming: | Control unit programming using the ' Automatic programming ' function of the control unit: Control unit ' Air-conditioning system ' – menu ' Coding/programming ' – Function ' Automatic programming '. |
| Programming sequence: | Read and follow the information and instructions on the Porsche Tester during the guided programming sequence. During the programming sequence, the control unit is re-programmed and then automatically re-coded . Do not interrupt the programming and coding process. Backup documentation for the re-programmed software releases starts after programming. |
| Programming duration: | Programming takes up to 3 minutes , depending on equipment. |

| | |
|--|--|
| Software programmed during this action: | ▪ Air-conditioning system control unit Software release: 1410 (or higher) Following control unit programming, the software release can be read out from the respective control unit using the Porsche Tester in the menu ⇒ 'Extended identifications'. |
| Procedure if error messages appear during the programming sequence: | ⇒ <i>Workshop Manual '9X00IN Basic instructions and procedure for control unit programming using the PIWIS Tester'</i> |
| Procedure in the event of a termination in the control unit programming: | Repeat control unit programming by restarting programming. |

- 2 Read out and delete all control unit fault memories.
- 3 Press **F3** to start the integration test in the control unit selection.
If there is an integration deviation for individual control units, these must be programmed before vehicle handover to the customer.



Information

If, despite the programming performed, a deviation is still displayed during the integration test, the test must be carried out again.

There must be no breaches of integration!

Control units with optional software can be ignored – with the exception of the air-conditioning system control unit.

- 4 End the diagnostic application, end readiness for operation and disconnect **P90999 - Porsche Tester 4** from the vehicle.
- 5 Switch off and disconnect the battery charger.
⇒ *Workshop Manual '270689 Charging vehicle electrical system battery'*

Labor position and PCSS encryption

Labor position:

| APOS | Labor operation | I No. |
|----------|---|-------|
| 96384940 | Rework front camera | |
| 91022541 | Re-programming control unit for assistance systems (ZFAS) | |
| 87112540 | Re-programming air-conditioning system control unit | |

PCSS encryption:

| | | |
|--------------------------|-------|--|
| Location (FES5) | 91020 | Assistance systems control unit (ZFAS) |
| Damage type (SA4) | 1613 | temporarily without function |

Important Notice: Technical Bulletins issued by Porsche Cars North America, Inc. are intended only for use by professional automotive technicians who have attended Porsche service training courses. They are written to inform those technicians of conditions that may occur on some Porsche vehicles, or to provide information that could assist in the proper servicing of a vehicle. Porsche special tools may be necessary in order to perform certain operations identified in these bulletins. Use of tools and procedures other than those Porsche recommends in these bulletins may be detrimental to the safe operation of your vehicle, and may endanger the people working on it. Properly trained Porsche technicians have the equipment, tools, safety instructions, and know-how to do the job properly and safely. Part numbers listed in these bulletins are for reference only. The work procedures updated electronically in the Porsche PIWIS diagnostic and testing device take precedence and, in the event of a discrepancy, the work procedures in the PIWIS Tester are the ones that must be followed.

© 2026 Porsche Cars North America, Inc.