
Item: TB261.1

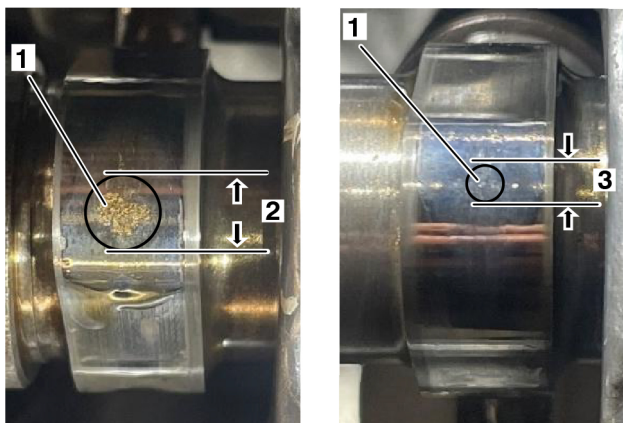
Description: Camshaft Wear

Model Affected: Tiger 1200 Alpine Edition, Tiger 1200 Desert Edition, Tiger 1200 GT, Tiger 1200 GT Pro, Tiger 1200 GT Explorer, Tiger 1200 Rally Pro, Tiger 1200 Rally Black Edition, Tiger 1200 Rally Explorer

At the 20,000 and 40,000 mile service, while checking the valve clearance, dealers are requested to inspect the camshaft lobes for signs of pitting.

Dealers are to renew the camshafts if one or more of the following conditions are met:

- The pitting area on the tip of the camshaft lobe is greater than 3.5 mm in diameter.
- If there are signs of porosity (casting void) no matter the size of the pitting diameter.
- Visual pitting of any size with a noticeability reduction of engine performance.
- Visual pitting of any size with a change of engine/cylinder head noise.



1. Pitting
2. 3.5 mm Diameter or greater
3. Less than 3.5 mm Diameter