

Service Alert

Mazda North American Operations
Irvine, CA 92618-2922



Subject: 12 VOLT BATTERY TEST PROCEDURE REQUIREMENTS FOR WARRANTY (USING THE DCA-8000PM)	Service Alert No.: SA-027/26
	Last Issued : 04/16/2026

BULLETIN NOTES

This SA supersedes the previously issued bulletin(s) listed below. The changes are noted below in Red.

Previous TSBs:	Date(s) Issued:	Previous TSBs:	Date(s) Issued:	Previous TSBs:	Date(s) Issued:
SA-007/25	10/22/25, 06/02/25 and 02/03/25	01-002/19	01/02/19	01-013/10	02/15/10
SA-032/24	05/21/24	01-009/18	03/26/18	01-032/07	08/01/07
01-007/23	11/07/23 and 05/09/23	01-005/16	05/23/12	01-025/04	07/21/04
01-003/22	03/17/22	01-018/12	05/23/12		
01-005/21	02/08/21	01-054/10	12/13/10		

APPLICABLE MODEL(S)/VINS

2020-2026 Mazda3	2020-2026 CX-5	2023-2026 CX-50 (All)
2020-2021 Mazda6	2020-2023 CX-9	2024-2026 CX-90 (All)
2020-2021 CX-3	2020-2026 CX-30	2025-2026 CX-70 (All)
2020-2026 MX-5	2022-2023 MX-30	

NOTE: For 2026 CX-5, the DCA-8000 will not read the VIN. Manually enter a 2025 CX-5 for testing purposes. This will be updated in a future software release.

DESCRIPTION

The Mazda DCA-8000 is required for all warranty battery testing. If the Mazda DCA-8000 is not used, incorrect battery testing may result in unnecessary battery replacement. Use the following test procedures in this Service Bulletin to test Mazda vehicle batteries and to generate a Warranty Code.

NOTE: A Warranty Code is required for warranty claim submission

Battery Identification (Mazda batteries have 2 rating types)

1. JIS (Japanese Industrial Standard):

JIS codes are six-digit alpha-numeric markings (excluding i-STOP batteries e.g. Q-85, S-95) molded into the top of the battery to identify a battery by the capacity (amps), dimensions, and battery terminal type. Vehicles manufactured in Japan come from the factory with a JIS rated battery.

NOTE: Replacement batteries may use a CCA rating. If so, use the CCA rating listed on the battery.

CONSUMER NOTICE: The information and instructions in this bulletin are intended for use by skilled technicians. Mazda technicians utilize the proper tools/ equipment and take training to correctly and safely maintain Mazda vehicles. These instructions should not be performed by "do-it-yourselfers." Customers should not assume this bulletin applies to their vehicle or that their vehicle will develop the described concern. To determine if the information applies, customers should contact their nearest authorized Mazda dealership. Mazda North American Operations reserves the right to alter the specifications and contents of this bulletin without obligation or advance notice. All rights reserved. No part of this bulletin may be reproduced in any form or by any means, electronic or mechanical--including photocopying and recording and the use of any kind of information storage and retrieval system ---without permission in writing.

2. CCA (Cold Cranking Amps):

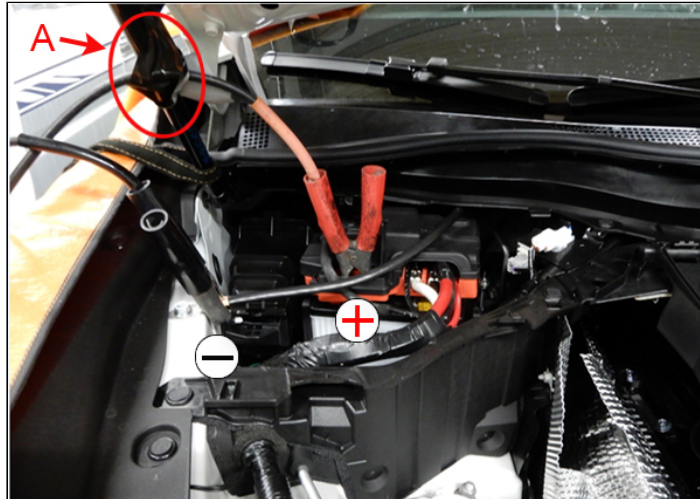
CCA ratings are normally located on a sticker affixed to the top of the battery to indicate a battery's Cold Cranking Amps. CCA rated batteries are supplied with domestically produced vehicles.

NOTE: If an incorrect CCA rating is entered into the Mazda DCA-8000, it will result in a false result and invalid Warranty Code from the tester. This will also result in unnecessary replacement of batteries.

TEST PROCEDURE

1. Connect the charger clamps to the appropriate battery posts.

NOTE: For CX-90/CX-70 Clamp Attachment, use duct tape (A) or equivalent to hold the cable as shown.



2. At the Main Menu, select In Vehicle Charge and the Acquire VIN screen is displayed.



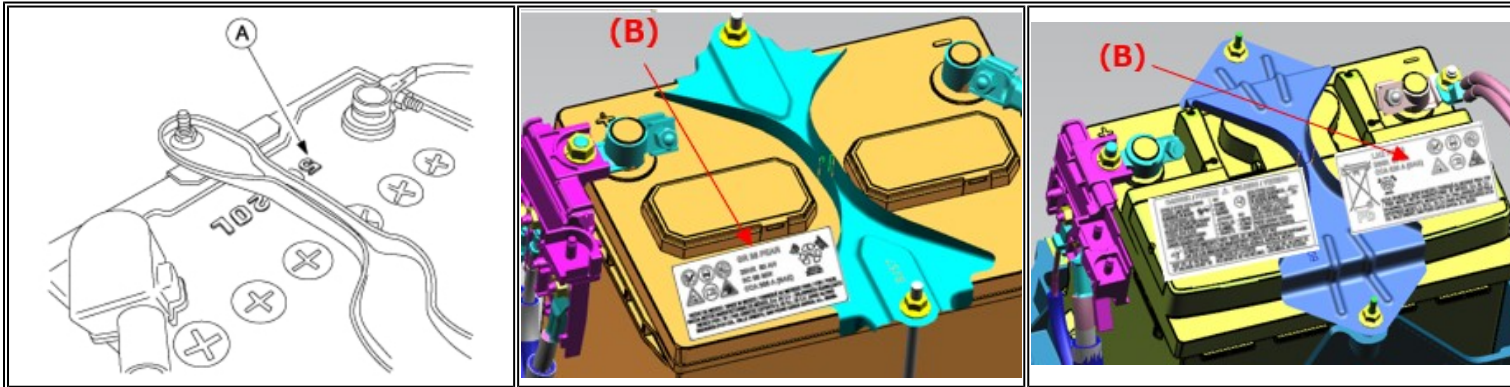
CONSUMER NOTICE: The information and instructions in this bulletin are intended for use by skilled technicians. Mazda technicians utilize the proper tools/ equipment and take training to correctly and safely maintain Mazda vehicles. These instructions should not be performed by "do-it-yourselfers." Customers should not assume this bulletin applies to their vehicle or that their vehicle will develop the described concern. To determine if the information applies, customers should contact their nearest authorized Mazda dealership. Mazda North American Operations reserves the right to alter the specifications and contents of this bulletin without obligation or advance notice. All rights reserved. No part of this bulletin may be reproduced in any form or by any means, electronic or mechanical---including photocopying and recording and the use of any kind of information storage and retrieval system ---without permission in writing.

3. Scan the barcode located on the driver's side door frame using the provided wireless barcode scanner. A single beep indicates the scan was successful.

NOTE: For 2026 CX-5, the DCA-8000 will not read the VIN. Manually enter a 2025 CX-5 for testing purposes. This will be updated in a future software release.

NOTE:

- If the DCA-8000 isn't used very often, the scanner might go dead because it only charges when the unit is plugged in and on.
- If your barcode scanner is unavailable for some reason, the VIN can also be entered manually.
- If the battery parameters were not filled in from the VIN scan, manually enter the battery information.
- Select the correct rating system for the battery by identifying the correct JIS code (A) stamped onto the battery top or CCA code (B) printed on the battery label. The battery hold down may need to be removed in order to read the JIS code.
- Look at the actual battery in the vehicle and enter the JIS/CCA code.



- For CX-90/CX-70 H3T (inline 6) M Hybrid Boost, use the following information for DCA-8000 test/charging since the battery label is not visible without removing the battery.
 - JIS (Japanese Industrial Standard) - 75D23L
 - CCA (Cold Cranking Amps) - 465A
- For CX-90/CX-70 PHEV (2.5L), the battery label is not visible, but the battery type is Q85. Use the following temporary Q85 Battery Charging Procedure until DCA-8000 software update is available.

a. Change Cranking Units to CCA.

b. Edit Battery Info, then Select Continue.

- Battery Type - I-ELOOP
- Cranking Units - CCA
- Cranking Rating - 520 (Q85 type battery) or 622 (S95 and LN3 type battery)
- Post Location - Top Post
- Capacity Units - Rated Ah
- Capacity Rating - 65 (Q85 type battery) or 72 (S95 and LN3 type battery)

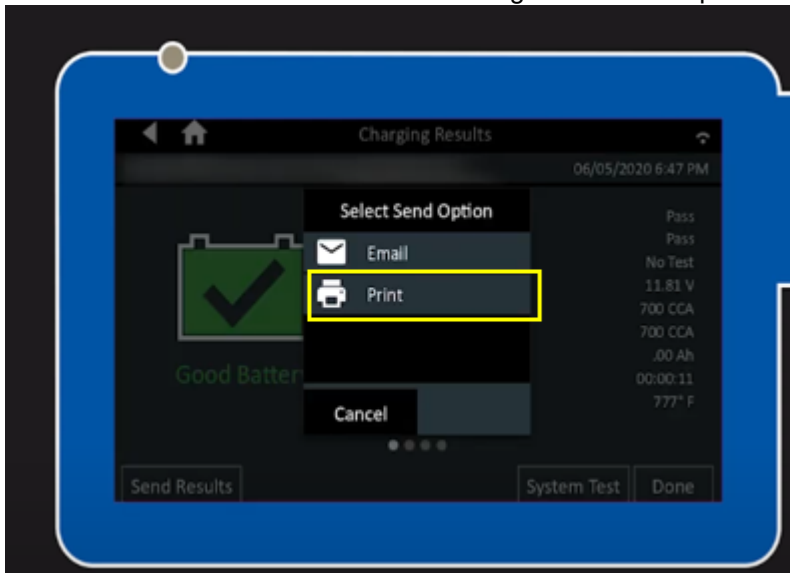
4. Complete the battery test by following the on-screen instructions and entering the appropriate information. Refer to the Mazda DCA-8000 Quick Start Guide or [Midtronics online Instruction Manual](#) for more information.

CONSUMER NOTICE: The information and instructions in this bulletin are intended for use by skilled technicians. Mazda technicians utilize the proper tools/ equipment and take training to correctly and safely maintain Mazda vehicles. These instructions should not be performed by "do-it-yourselfers." Customers should not assume this bulletin applies to their vehicle or that their vehicle will develop the described concern. To determine if the information applies, customers should contact their nearest authorized Mazda dealership. Mazda North American Operations reserves the right to alter the specifications and contents of this bulletin without obligation or advance notice. All rights reserved. No part of this bulletin may be reproduced in any form or by any means, electronic or mechanical--including photocopying and recording and the use of any kind of information storage and retrieval system ---without permission in writing.

5. After the test, the DCA-8000 will display one of the possible battery test results listed below. Review the results and follow the Action for the displayed result.

Battery Tester Display	Action
“GOOD BATTERY”	Return the battery to service.
“GOOD - RECHARGE”	Fully charge the battery and return it to service.
“CHARGE AND RETEST”	Fully charge the battery and retest. Failure to fully charge the battery before retesting may cause false readings. If CHARGE AND RETEST appears again after you fully charge the battery, replace the battery.
“REPLACE BATTERY”	A REPLACE BATTERY result may also mean a poor connection between the battery and the vehicle. If you tested the battery using the System test, disconnect the battery cables and retest using the Battery Test before replacing it.

6. Select Send Results then select Print to get a test result print out.



CONSUMER NOTICE: The information and instructions in this bulletin are intended for use by skilled technicians. Mazda technicians utilize the proper tools/ equipment and take training to correctly and safely maintain Mazda vehicles. These instructions should not be performed by "do-it-yourselfers." Customers should not assume this bulletin applies to their vehicle or that their vehicle will develop the described concern. To determine if the information applies, customers should contact their nearest authorized Mazda dealership. Mazda North American Operations reserves the right to alter the specifications and contents of this bulletin without obligation or advance notice. All rights reserved. No part of this bulletin may be reproduced in any form or by any means, electronic or mechanical--including photocopying and recording and the use of any kind of information storage and retrieval system ---without permission in writing.

TEST PROCEDURE FOR VEHICLES EQUIPPED WITH I-STOP



NOTE: Check the specifications before entering information because the i-stop vehicle markings vary depending on the vehicle model.

1. Connect the charger clamps to the appropriate battery posts.
2. At the main menu, select In Vehicle Charge and the Acquire VIN screen is displayed.
3. Scan the barcode located on the driver's side door frame using the provided wireless barcode scanner.

NOTE: A single beep indicates the scan was successful.

4. After VIN is scanned, clicked "enter VIN manually" or "manual entry". Then enter the battery information manually.

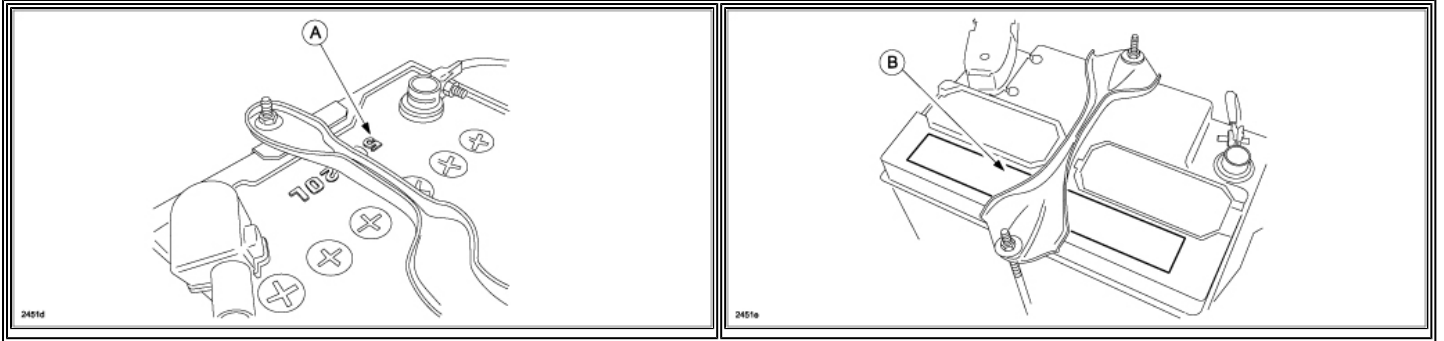
NOTE: This will automatically transfer the 17-digit VIN.

5. For I-STOP batteries, enter the battery type as i-ELOOP.



CONSUMER NOTICE: The information and instructions in this bulletin are intended for use by skilled technicians. Mazda technicians utilize the proper tools/ equipment and take training to correctly and safely maintain Mazda vehicles. These instructions should not be performed by "do-it-yourselfers." Customers should not assume this bulletin applies to their vehicle or that their vehicle will develop the described concern. To determine if the information applies, customers should contact their nearest authorized Mazda dealership. Mazda North American Operations reserves the right to alter the specifications and contents of this bulletin without obligation or advance notice. All rights reserved. No part of this bulletin may be reproduced in any form or by any means, electronic or mechanical--including photocopying and recording and the use of any kind of information storage and retrieval system ---without permission in writing.

NOTE: Select the correct rating system for the battery by identifying the correct JIS code (A) stamped onto the battery top or CCA code (B).



6. Run battery test by following the on-screen instructions, visit the Midtronics online Instruction Manual for more information.

7. Select Send Results then select Print to get a test result print out. Write the Warranty Code on the RO and attach the printed results to the RO (do not attach with tape due to reaction with the printer paper).

NOTE: A Warranty Code is required for warranty claim submission. Claims filed WITHOUT correct codes will be subject to warranty claim denial.

REPAIR PROCEDURE

1. Perform appropriate repair to vehicle. If needed, use the Battery Diagnostics of the DCA-8000 to test the charging and starting systems by following the on-screen instructions for entering the appropriate information. Refer to the Mazda DCA-8000 Instruction Manual for more information.

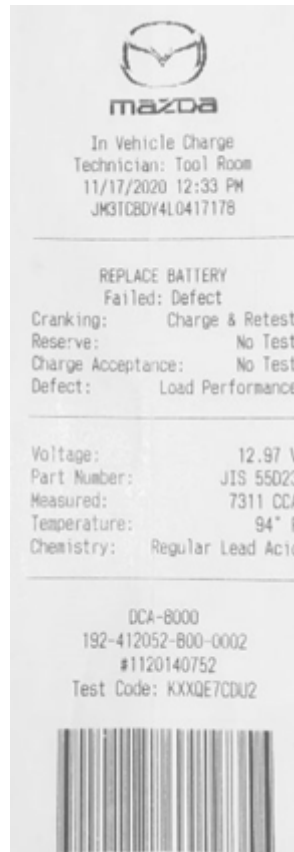
2. Verify the repair.

CONSUMER NOTICE: The information and instructions in this bulletin are intended for use by skilled technicians. Mazda technicians utilize the proper tools/ equipment and take training to correctly and safely maintain Mazda vehicles. These instructions should not be performed by "do-it-yourselfers." Customers should not assume this bulletin applies to their vehicle or that their vehicle will develop the described concern. To determine if the information applies, customers should contact their nearest authorized Mazda dealership. Mazda North American Operations reserves the right to alter the specifications and contents of this bulletin without obligation or advance notice. All rights reserved. No part of this bulletin may be reproduced in any form or by any means, electronic or mechanical--including photocopying and recording and the use of any kind of information storage and retrieval system ---without permission in writing.

WARRANTY INFORMATION

1. Write the Warranty Code on the RO and attach the printed results to the RO (do not attach with tape due to reaction with the printer paper).

NOTE: A Warranty Code is required for warranty claim submission. Claims filed WITHOUT correct codes will be subject to warranty claim denial.



CONSUMER NOTICE: The information and instructions in this bulletin are intended for use by skilled technicians. Mazda technicians utilize the proper tools/ equipment and take training to correctly and safely maintain Mazda vehicles. These instructions should not be performed by "do-it-yourselfers." Customers should not assume this bulletin applies to their vehicle or that their vehicle will develop the described concern. To determine if the information applies, customers should contact their nearest authorized Mazda dealership. Mazda North American Operations reserves the right to alter the specifications and contents of this bulletin without obligation or advance notice. All rights reserved. No part of this bulletin may be reproduced in any form or by any means, electronic or mechanical--including photocopying and recording and the use of any kind of information storage and retrieval system ---without permission in writing.