

ATTENTION:

- GENERAL MANAGER
- PARTS MANAGER
- CLAIMS PERSONNEL
- SERVICE MANAGER

IMPORTANT - All Service Personnel Should Read and Initial in the boxes provided, right.

© 2026 Subaru of America, Inc. All rights reserved.



QUALITY DRIVEN® SERVICE

SERVICE INFORMATION BULLETIN

APPLICABILITY: 1990-25MY Legacy & Outback
 1994-23MY Impreza
 2014-23MY Crosstrek
 1998-18MY Forester
 2015-25MY WRX
 2013-25MY BRZ

NUMBER: 03-97-26

DATE: 04/24/26

SUBJECT: Service Manual Correction / Clutch Master
 Cylinder Reservoir Seal

INTRODUCTION:

This Service Information Bulletin announces the Service Manual Correction regarding clutch master cylinder reservoir service procedures. These procedures are being implemented to ensure proper installation of the clutch master cylinder. Additional parts applicability is also provided for WRX clutch system components. The information supplied in this bulletin is to be used in conjunction with the applicable Service Manual.

PART INFORMATION:

Model	MY	Part Description	Part Number
WRX	All	SEAL-RESERVOIR	37275CC000
	22-25	PISTON STOP RING	114130040
		SPRING PIN	37241AE000
		SEAL RESERVOIR	37275CC000
		PISTON	37232VC010
		BOOT	37242VC000
		PUSH ROD	37233AJ000
		C-RING	37243VC000

CAUTION: VEHICLE SERVICING PERFORMED BY UNTRAINED PERSONS COULD RESULT IN SERIOUS INJURY TO THOSE PERSONS OR TO OTHERS.

Subaru Service Bulletins are intended for use by professional technicians ONLY. They are written to inform those technicians of conditions that may occur in some vehicles, or to provide information that could assist in the proper servicing of the vehicle. Properly trained technicians have the equipment, tools, safety instructions, and know-how to do the job correctly and safely. If a condition is described, DO NOT assume that this Service Bulletin applies to your vehicle, or that your vehicle will have that condition.

Subaru of America, Inc. is ISO 14001 Compliant

ISO 14001 is the international standard for excellence in Environmental Management Systems. Please recycle or dispose of automotive products in a manner that is friendly to our environment and in accordance with all local, state and federal laws and regulations.

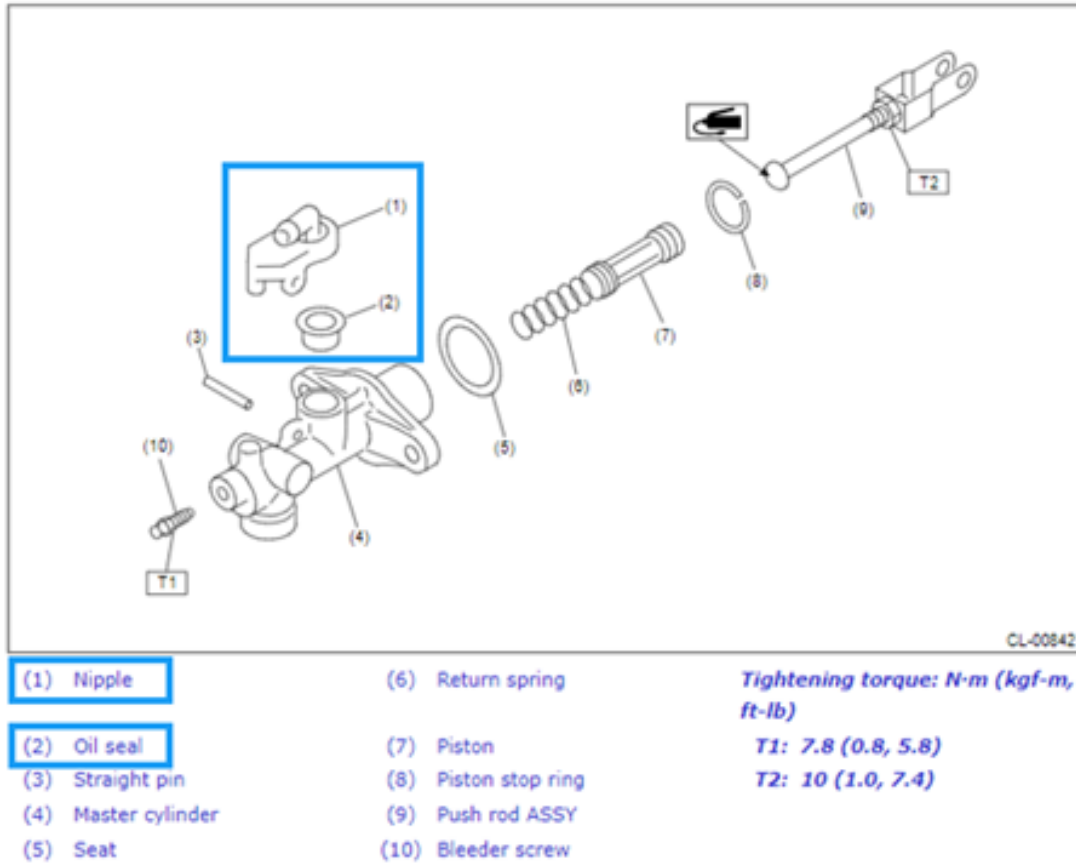
Continued...

SERVICE PROCEDURE / INFORMATION:

There are two corrections of the Service Manual.

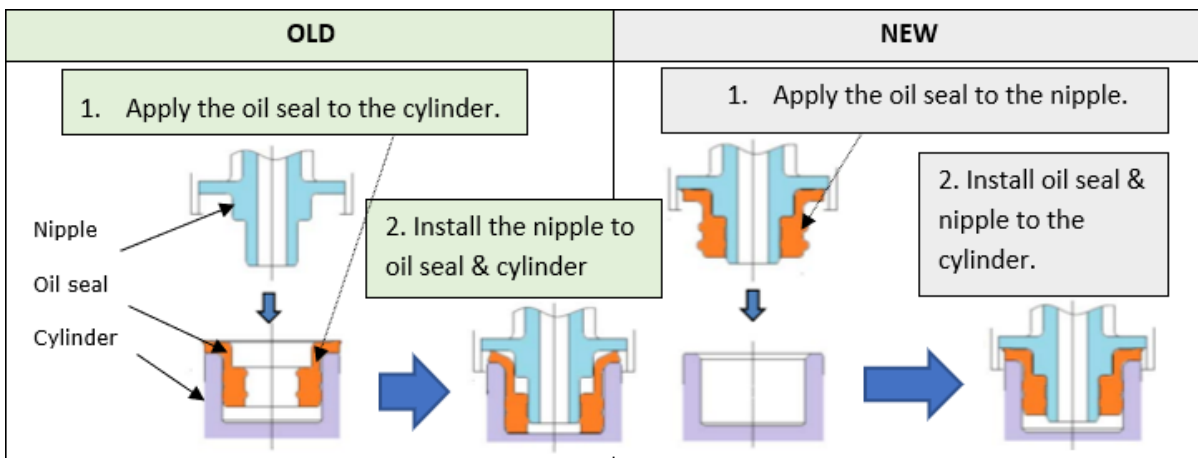
1. MASTER CYLINDER OIL SEAL

Refer to Service Manual Section: CLUTCH SYSTEM > Master Cylinder > ASSEMBLY



The current version of the Service Manual instructs installing the oil seal to the cylinder.

This will be revised to specify installation of the oil seal to the nipple.

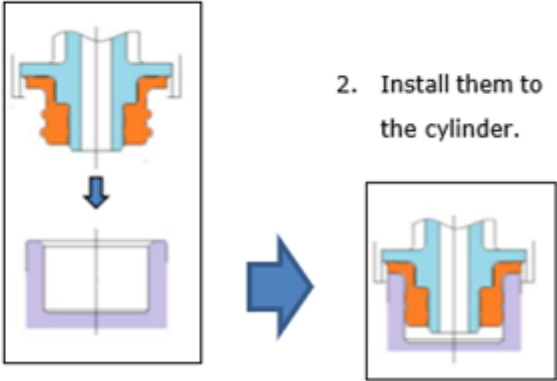


NOTE: The Service Manuals covering this procedure may vary slightly between specific models.

Continued...

EXAMPLE:

2018MY Forester is shown for example purposes.

OLD	NEW
<p>1. Apply a coat of grease to the contact surfaces of the push rod and piston before installation. Grease: SILICONE GREASE G-40M or equivalent</p> <p>2. Assemble in the reverse order of disassembly. Tightening torque: 10 N·m (1.0 kgf·m, 7.4 ft-lb)</p>	<p>1. Apply a coat of grease to the contact surfaces of the push rod and piston before installation. Grease: SILICONE GREASE G-40M or equivalent</p> <p>2. Install the piston stop ring.</p> <p>3. Install the seat.</p> <p>4. Install the oil seal to the nipple.</p> <p>1. Apply the oil seal to the nipple.</p>  <p>2. Install them to the cylinder.</p> <p>5. Install the straight pin and nipple with the seal.</p> <p>Tightening torque: 10 N·m (1.0 kgf·m, 7.4 ft-lb)</p>

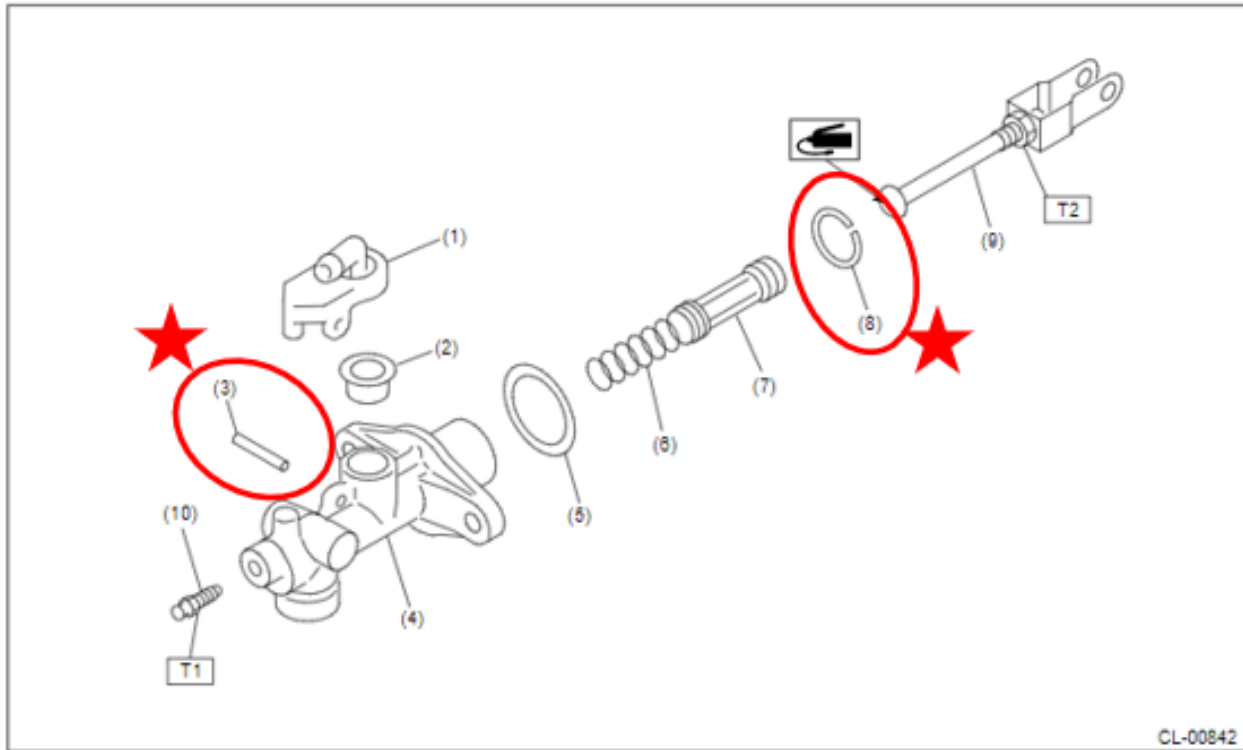
NOTE: The Silicone Grease G-40M equivalent is 3M™ Silicone Paste #08946 (SOA P.N. 004404002).

Continued...

2. ONE-TIME USE PARTS

Refer to Service Manual Section: CLUTCH SYSTEM > General Description > COMPONENT

The current Service Manual indicates the straight pin and the piston stop ring as being reusable parts. These parts are one-time use ONLY. See the illustration below.



(1) Nipple

(2) Oil seal

(3) Straight pin

(4) Master cylinder

(5) Seat

(6) Return spring

(7) Piston

(8) Piston stop ring

(9) Push rod ASSY

(10) Bleeder screw

Tightening torque: N·m (kgf-m, ft-lb)

T1: 7.8 (0.8, 5.8)

T2: 10 (1.0, 7.4)

WARRANTY / CLAIM INFORMATION:

There have been no changes made to the Labor Time Guide regarding these procedures.

IMPORTANT REMINDERS:

- SOA strongly discourages the printing and/or local storage of service information as previously released information and electronic publications may be updated at any time.
- Always check for any open recalls or campaigns anytime a vehicle is in for servicing.
- Always refer to STIS for the latest service information before performing any repairs.