



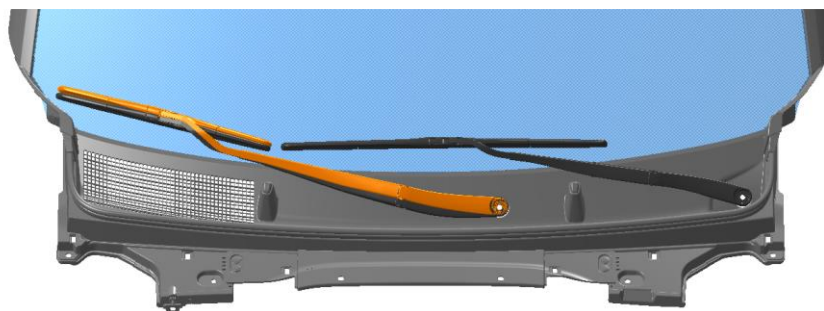
GROUP	MODEL
Product Improvement	2024-2026MY EV9 (MV1, MV1a)
NUMBER	DATE
PI2601A	April 2026

TECHNICAL SERVICE BULLETIN

SUBJECT: **PASSENGER SIDE WIPER ARM REPLACEMENT (PI2601A)**

This bulletin provides the service procedure to replace the passenger-side (RH) windshield wiper arm on certain 2024-2026MY EV9 (MV1, MV1a) vehicles listed in the table below. During winter conditions, the windshield wipers may become temporarily inoperable due to accumulated snow on the windshield or cowl area. Kia has developed a newly designed passenger-side wiper arm of a different shape and angle to increase the clearance between the wiper and windshield cowl. Follow the procedure outlined in this publication to replace the RH wiper arm. Before conducting the procedure, confirm that the vehicle is included in the affected VIN range.

Model	Production Date Range
EV9 (MV1)	September 25, 2023 to April 6, 2026
EV9 (MV1a)	May 16, 2024 to April 6, 2026



NOTICE

A Product Improvement Campaign is a repair program with customer notification. There is no charge to the vehicle owner for this repair.


Repair status for a VIN is provided on KDealer+ (Service → Warranty Coverage → Warranty Coverage Inquiry → Campaign Information). Not completed Recall / Service Action reports are available on KDealer+ (Consumer Affairs → Not Completed Recall → Recall VIN → Select Report), which includes a list of affected vehicles.

This issue number is PI2601A.

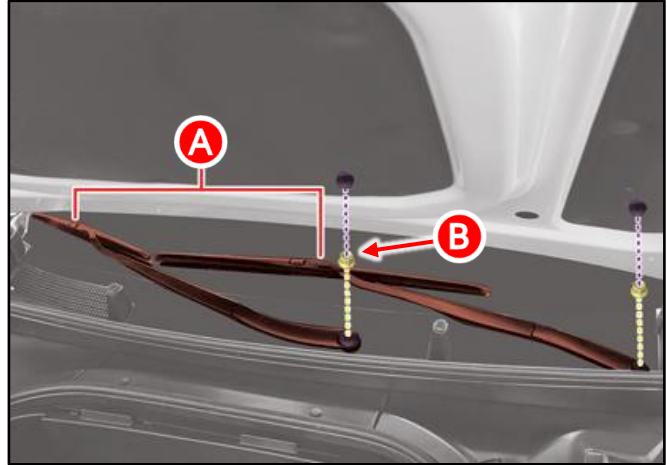
A printed copy is for reference only; publication information can be updated at any time. Always refer to KGIS for the latest information. After logging in kdealer.com, the newest technical publications are listed in 'Service Releases' and has the latest service information that has been released.

Repair Procedure:

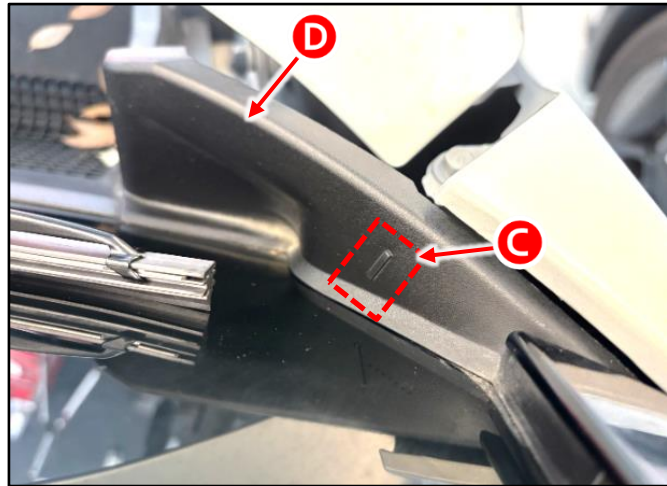
1. Remove the passenger-side (RH) windshield wiper arm (A) by referring to "Body (Interior / Exterior / Electrical) → Exterior Green House → Wiper Arm → Removal and Installation" in the applicable Shop Manual on KGIS.



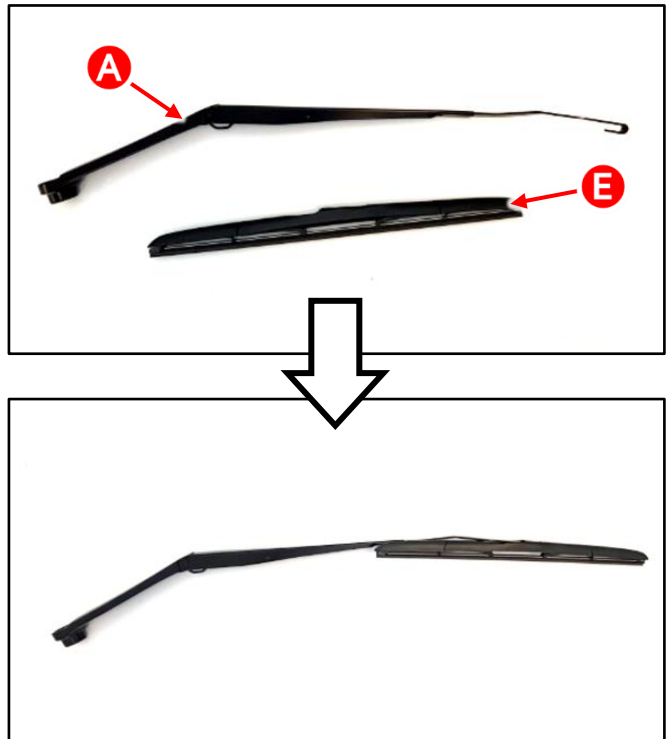
Tightening torque for nut (B):
6.5 - 9.4 lb.ft (8.8 - 12.7 N.m)



2. Locate the installation mark (C) stamped on the passenger (RH) A pillar garnish (D).



3. Install the wiper blade (E) onto the wiper arm (A).



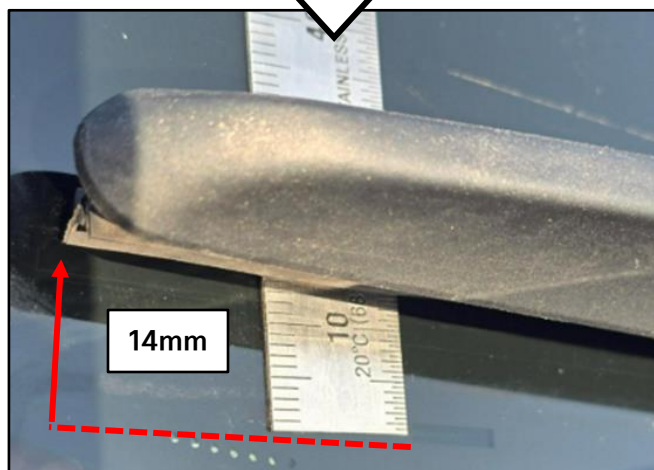
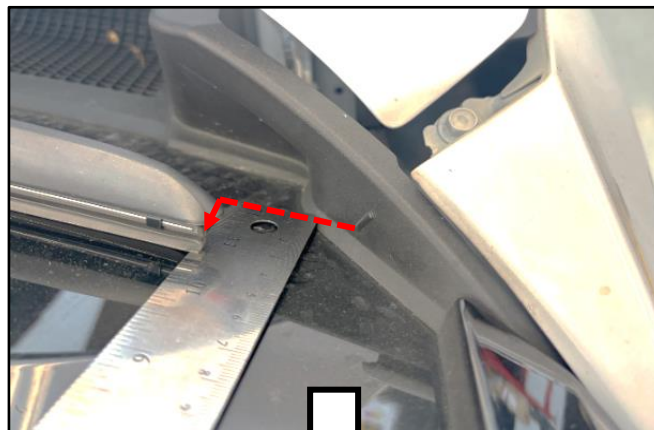
SUBJECT:

PASSENGER SIDE WIPER ARM REPLACEMENT (PI2601A)

- 4a. Install the **new** wiper arm (A) and wiper blade (E) but **DO NOT INSTALL THE NUT (B)**.
- 4b. Align the tip of the wiper blade (E) rubber 14 mm **HIGHER** than the existing installation mark.

ⓘ IMPORTANT

The wiper arm **MUST** be installed at the specified height.



- 5a. Install the nut (B).
- 5b. Apply light downward pressure on the wiper arm (A) at the spring when tightening nut (B). This prevents the wiper arm from popping up, which could cause interference between the wiper arm and the hood.
6. Reinstall all removed parts in reverse order or removal.
7. Confirm normal wiper operation.

**⚠ CAUTION**

Improper seating of the wiper arm on the linkage may cause hood interference and result in component damage. Ensure the wiper arm is correctly installed.



Printed document copy is for reference only; information may be updated at any time. Always refer to KGIS for the latest information.


TSB: PI2601A EV9 (MV1, MV1a) April 2026

SUBJECT:

PASSENGER SIDE WIPER ARM REPLACEMENT (PI2601A)**AFFECTED VEHICLE RANGE:**

Model	Production Date Range
EV9 (MV)	September 25, 2023 to April 6, 2026
EV9 (MVa)	May 16, 2024 to April 6, 2026

REQUIRED PART:

Part Name	Model	Part Number	Figure	Qty.
Windshield Wiper Arm	MV1	98321 DO010QQK		1
	MV1a	98321 XA100QQK		

Note: Dealers will not be able to place orders through DMS/KDP. PartsEye will place replenishment orders based on the dealers' on-hand supply. Please refer to Parts bulletin PB MI-25-08 for information related to Parts Eye Campaign ordering.

WARRANTY INFORMATION:

N Code: N99 C Code: C99

Model	Claim Type	Causal P/N	Qty.	Repair Description	Labor Op Code	Op Time	Replacement P/N	Qty.
MV1	V	98321 DO000	0	(PI2601A) RH Windshield Wiper Arm Replacement	260075R0	0.2 M/H	98321 DO010QQK	1
MV1a		98321 XA000			260A14R0		98321 XA100QQK	

Note: When substitute transportation is provided, manually enter sublet code 'X2' for rental expense reimbursement or one roundtrip rideshare expense.

NOTICE

VIN inquiry data for this repair is provided for tracking purposes only. Kia retailers should reference [PI2601A](#) when accessing the KDealer+ system.