



Service Bulletin

Bulletin No.: PIC6485F

Date: April, 2026

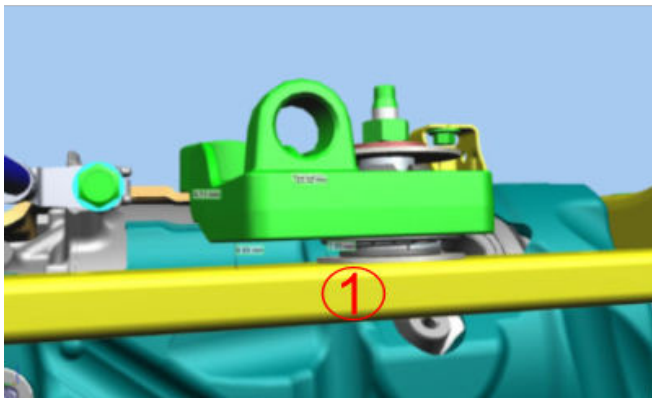
PRELIMINARY INFORMATION

Subject: Diagnostic Tip - Noise or Vibration with A/C Compressor on

Brand:	Model:	Model Year:		VIN:		Engine:	Transmission:
		from	to	from	to		
Cadillac	LYRIQ	2023 - 2026		All	All	All	All

Involved Region or Country	North America
Additional Options (RPO)	RWL - CHASSIS DRIVE LINE-REAR WHEEL DRIVE (RWD)
Condition	A noise or vibration may be noticed while the A/C Compressor is running.
Cause	Compressor upper mount twisted during attachment of the upper mount to the compressor.

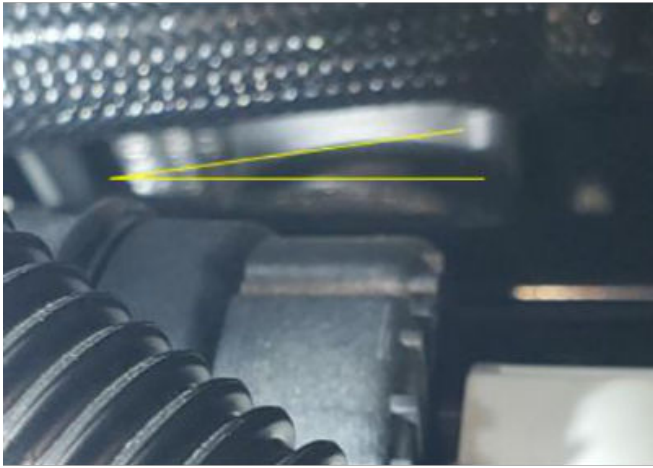
Correction



6236078

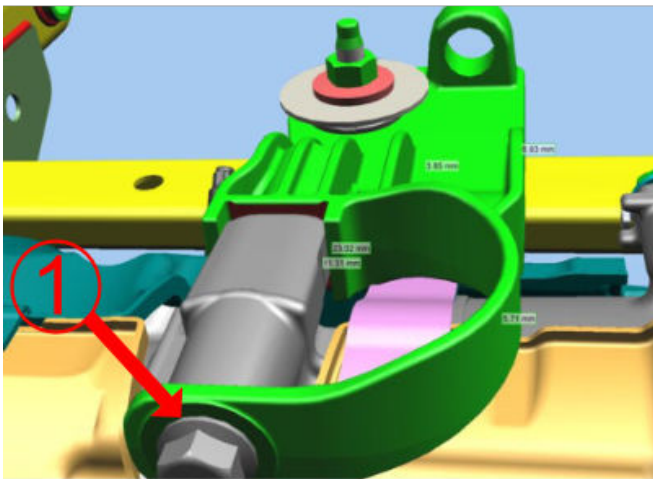
View from top side front of A/C compressor.

1. Front PEC Rail



6236079

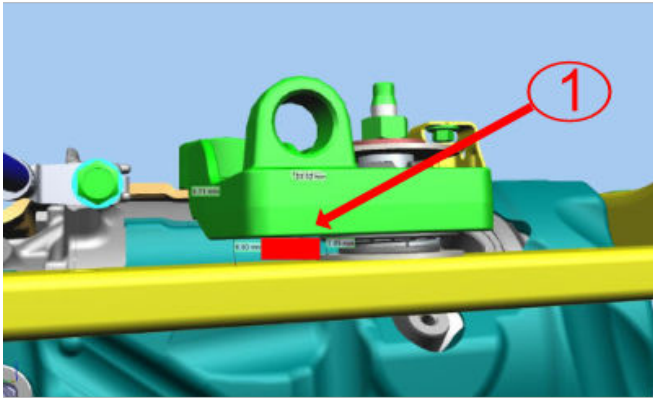
This is a View from the front of the A/C Compressor/Vehicle. If the gap between the upper Compressor mount to the front PEC rail is not even across the width of the part, then the bracket has twisted when it was installed and can cause NVH issues. If it has twisted, then the gap will be less on the passenger side of the part versus the driver's side.



6236080

View from top side rear of A/C Compressor.

1. Loosen the through bolt that secures the compressor to the upper mount bracket enough that the bracket can rotate back to a horizontal position.

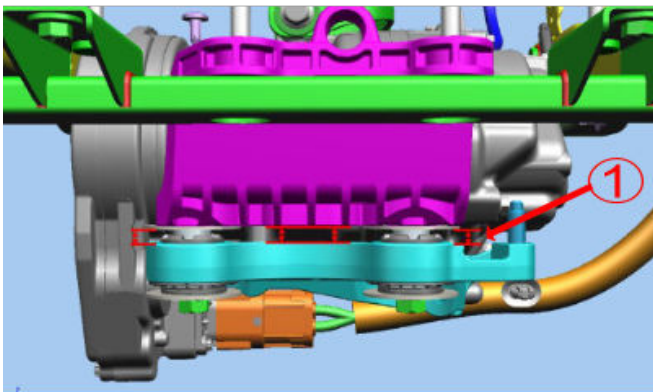


6236081

View from top side front of the A/C Compressor.

Once the bracket is parallel to the ground and the PEC rail again, slide a shim (6.5 mm thick) or a screw driver between the PEC rail and the bottom of the bracket to ensure the bracket does not twist again during re-torquing of the bolt.

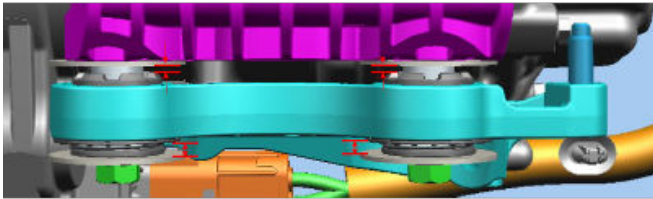
Torque through bolt to 30 nm + 45 to 60 degrees.



6236084

View from bottom side rear of A/C compressor.

After the fastener from the compressor to top mount bracket has been re-torqued, inspect the condition of the 2 lower mounts. The upper bracket (purple) and the lower bracket (cyan) of the lower mount system should be parallel to each other.



6236086

View from bottom side rear of A/C compressor.

With the compressor in static load position, there should be no contact between the rubber isolator (snubbers) and adjacent metal washers.

Warranty Information

For vehicles repaired under the Bumper-to-Bumper coverage (Canada Base Warranty coverage), use the following labor operation. Reference the Applicable Warranties section of Investigate Vehicle History (IVH) for coverage information.

Labor Operation	Description	Labor Time
5080358*	Inspect and Align High Voltage A/C Compressor Mounts	1.5 Hrs.
*This is a unique Labor Operation for Bulletin use only.		

Version	7
Modified	01/06/2023 - Created on. 06/14/2024 - Added 2024 Model Year. 09/13/2024 - Added RPO RWL. 01/29/2025 - Added 2025 Model Year. 10/16/2025 - Added 2026 Model Year. 11/04/2025 - Added 2026 OPTIQ. 04/20/2026 – Updated Models

