



I N F I N I T I

Nissan Group of the Americas
Copyright©

TECHNICAL SERVICE BULLETIN

Classification:

BT26-004

Reference:

ITB26-004

Date:

March 31, 2026

FRONT FASCIA POPPING OUT NEAR HEADLAMP

APPLIED VEHICLES: 2022-2026 QX60 (L51)

IF YOU CONFIRM

The Front Bumper Fascia is detaching from the fender under the headlamp on one/or both sides.

ACTION

Refer to the **SERVICE PROCEDURE** in this bulletin to:

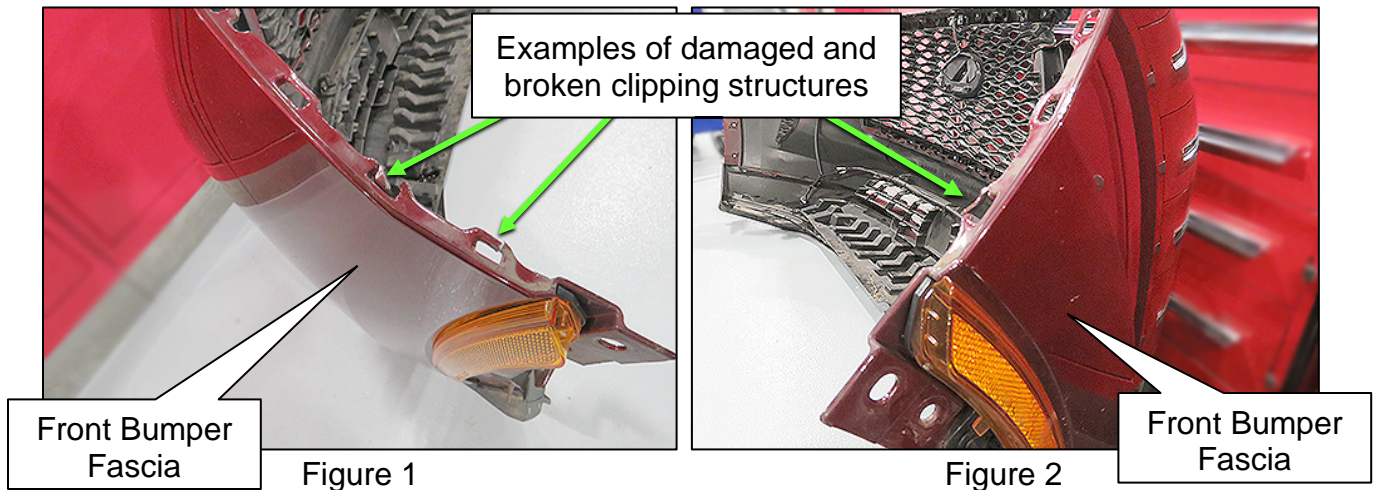
1. Remove the Front Bumper Fascia.
2. Replace the affected Headlamp Bracket.
3. Replace the affected Front Bumper Fascia Side Bracket.
4. Reinstall the Front Bumper Fascia, with Betaseal (or equivalent) adhesive between the Front Bumper Fascia and the affected side Front Bumper Fascia Side Bracket.

IMPORTANT: The purpose of **ACTION** (above) is to give you a quick idea of the work you will be performing. You **MUST** closely follow the entire **SERVICE PROCEDURE** as it contains information that is essential to successfully completing this repair.

Bulletins are intended for use by qualified technicians, not 'do-it-yourselfers'. Qualified technicians are properly trained individuals who have the equipment, tools, safety instruction, and know-how to do a job properly and safely. **NOTE:** If you believe that a described condition may apply to a particular vehicle, **DO NOT** assume that it does. See your Infiniti retailer to determine if this applies to your vehicle.

SERVICE PROCEDURE

1. Remove the Front Bumper Fascia.
 - Refer to the **ESM: BODY EXTERIOR, DOORS, ROOF & VEHICLE SECURITY > EXTERIOR > REMOVAL AND INSTALLATION > FRONT BUMPER**
2. Inspect the clipping structures that attach the Front Bumper Fascia into the Front Bumper Fascia Side Bracket (BRACKET - FRONT BUMPER SIDE).
 - The Front Bumper Fascia should be replaced if the clipping structures are damaged or broken like shown in Figure 1 and Figure 2.

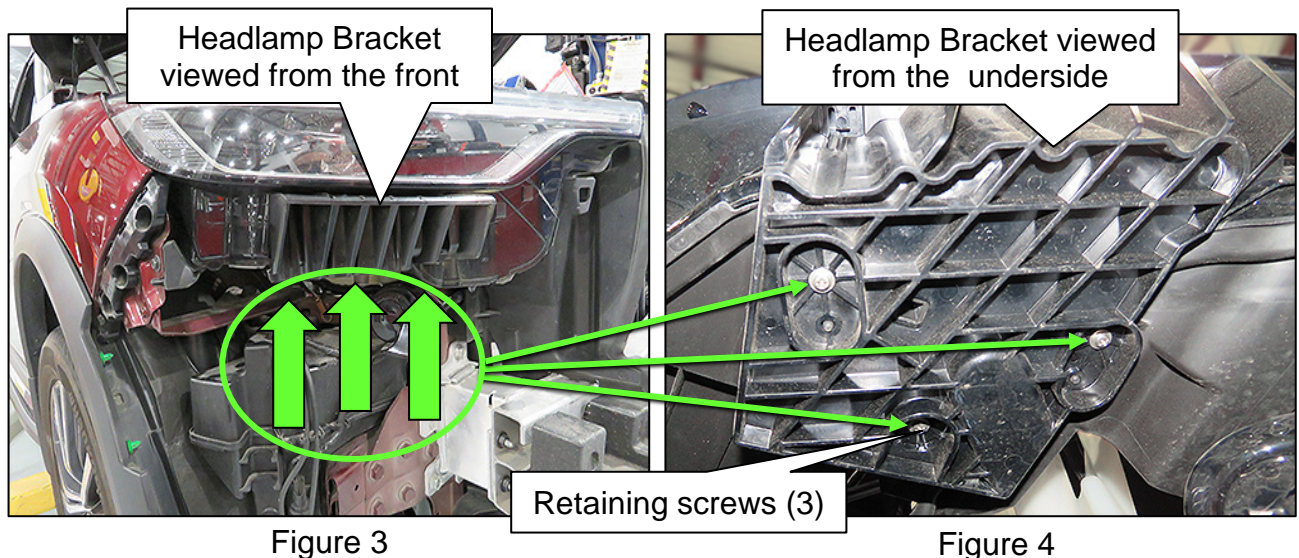


Perform the following on the affected side only (passenger RH, driver LH, or both):

HINT: In the following steps the passenger (RH) side is shown. The driver (LH) side is similar.

3. Replace the Headlamp Bracket.
 - a. Remove the three (3) retaining screws that retain the Headlamp Bracket.

HINT: Located underneath Headlamp Bracket (Figure 3 and Figure 4).



- b. Install the new Headlamp Bracket (Figure 5), and then torque screws as follows:
- Add a shim (washer) to the rearmost attachment point of the Headlamp Bracket.
 - ∅ Shim dimensions are:
 - § 1.3 mm to 1.8 mm thick. Shims may be combined to achieve correct thickness.
 - § Inner diameter of at least 5.5 mm
 - § Outer diameter of 10 mm to 12 mm
 - Torque screws to between: 1.0 - 2.5 N•m (0.102 - 0.255 kg-m, **9 - 22 in-lb**)
 - See **PARTS INFORMATION**.

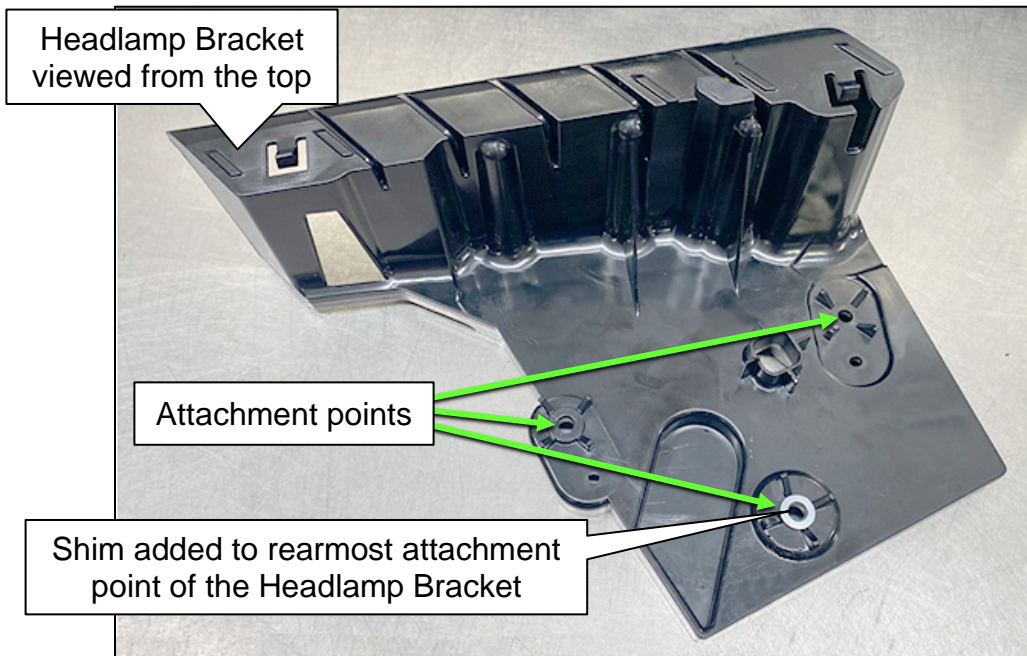


Figure 5

4. Clean and roughen the surface of the new side Front Bumper Fascia Side Bracket (BRACKET - FRONT BUMPER SIDE, RH/LH) where shown in Figure 6 with a piece of emery cloth, and then add primer.
- Clean the surface with Isopropyl alcohol.
 - See **PARTS INFORMATION**.

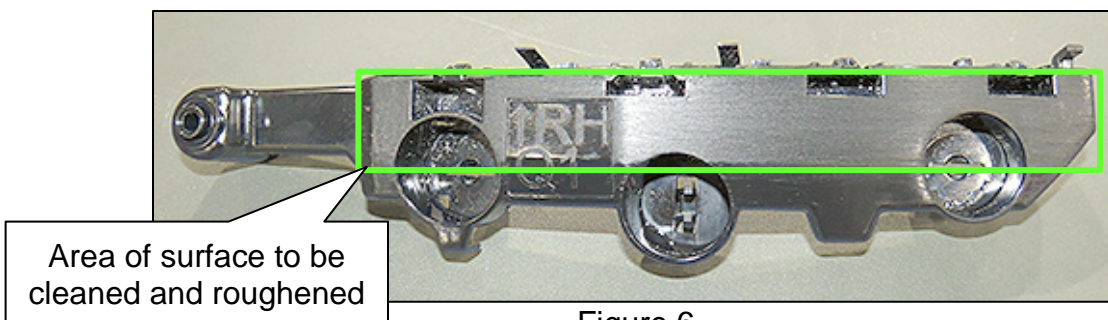


Figure 6

5. Remove the original side Front Bumper Fascia Side Bracket.
 - Two (2) bolts.

6. Install the new Front Bumper Fascia Side Bracket onto the vehicle.

- Torque bolts to between:
1.6 - 2.4 N•m (0.163 - 0.245 kg-m, **14 - 21 in-lb**)

7. Clean and roughen the corresponding surface of the back side of the Front Bumper Fascia where shown in Figure 8, and then add primer.
 - Clean the surface with Isopropyl alcohol.

8. Apply a bead of Betaseal (or equivalent) adhesive to the back side of the Front Bumper Fascia where the surface was cleaned and roughened (Figure 8).

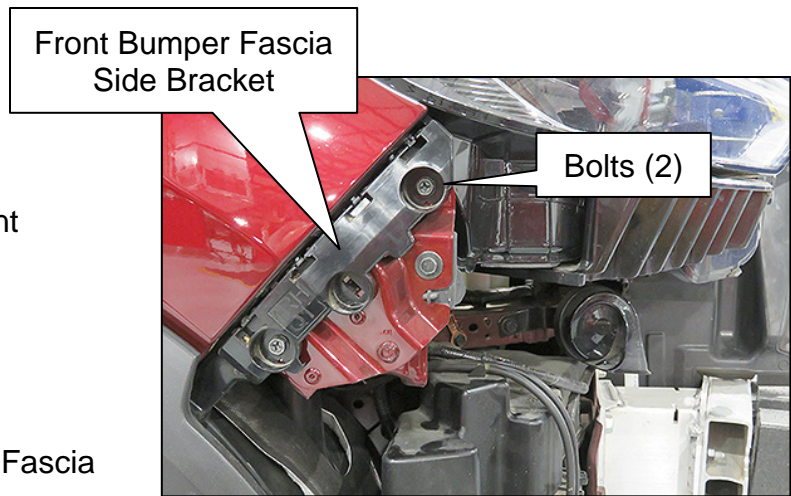


Figure 7

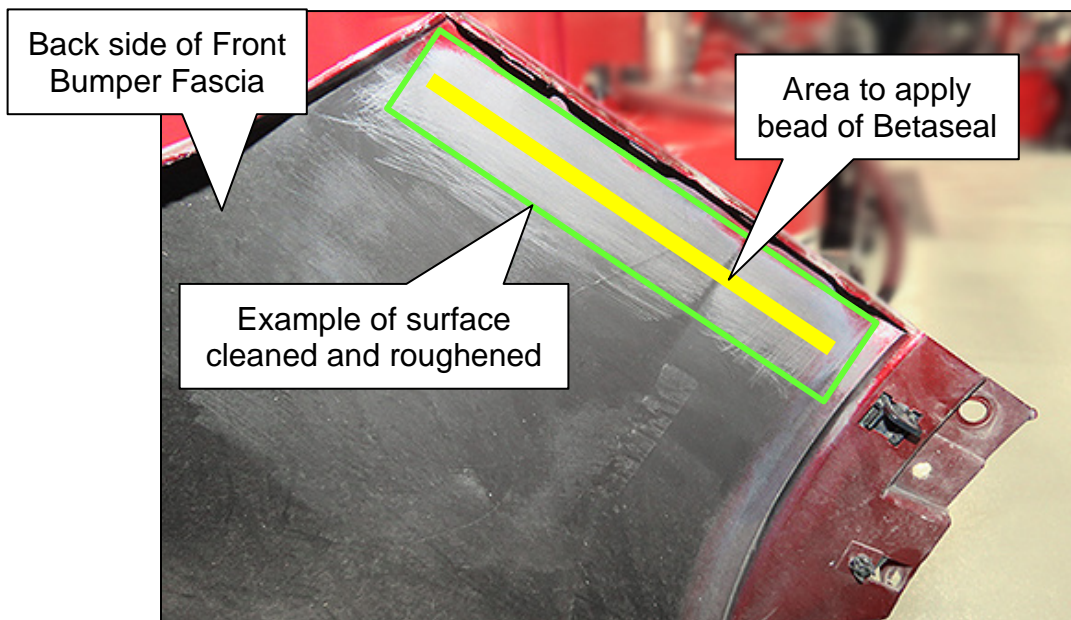


Figure 8

9. Install the Front Bumper Fascia, taking care not to allow the Betaseal adhesive to contact anything other than the Front Bumper Fascia Side Bracket.

HINT: The Betaseal should adhere the Front Bumper Fascia to the Front Bumper Fascia Side Bracket once installed.

- Refer to the ESM: **BODY EXTERIOR, DOORS, ROOF & VEHICLE SECURITY > EXTERIOR > REMOVAL AND INSTALLATION > FRONT BUMPER**

10. Perform any additional steps that are required when the Front Bumper Fascia has been removed or replaced.

- Refer to the ESM:
 - **CRUISE CONTROL & DRIVER ASSISTANCE > DRIVER ASSISTANCE SYSTEM > DRIVER ASSISTANCE SYSTEM > BASIC INSPECTION > ADDITIONAL SERVICE WHEN REPLACING FRONT CAMERA UNIT**
 - **CRUISE CONTROL & DRIVER ASSISTANCE > DRIVER ASSISTANCE SYSTEM > DRIVER ASSISTANCE SYSTEM > BASIC INSPECTION > ADDITIONAL SERVICE WHEN REPLACING DISTANCE SENSOR**
 - **CRUISE CONTROL & DRIVER ASSISTANCE > DRIVER ASSISTANCE SYSTEM > DRIVER ASSISTANCE SYSTEM > BASIC INSPECTION > ADDITIONAL SERVICE WHEN REPLACING SIDE RADAR**

PARTS INFORMATION

DESCRIPTION	PART NUMBER	QUANTITY
Front Bumper Fascia	(1)	1 If needed
BRACKET ASSY - MOUNTING, HEADLAMP (Passenger side)	26040-6SA0A	1 If needed
BRACKET ASSY - HEADLAMP, LH (Driver side)	26090-6SA0A	1 If needed
Small Washer (1.5 mm thick)	(2)	1 per side
BRACKET - FRONT BUMPER SIDE, RH (Front Bumper Fascia Side Bracket)	62226-6SA0B	1 If needed
BRACKET - FRONT BUMPER SIDE, LH (Front Bumper Fascia Side Bracket)	62227-6SA0A	1 If needed
Betaprime Single Application Primer Stick (or equivalent)	5504GSA (3)	1 If needed
Betaseal 310 ml (or equivalent)	U-428 (3)	As needed

- (1) Look up part number in the EPC by VIN.
- (2) Source from local hardware store.
- (3) Source from local supplier, or available through Amazon and other online vendors.

EXPENSE CODE

EXPENSE CODE	DESCRIPTION	MAX AMOUNT
066	Betaprime Single Application Primer Stick	\$10.08 (1)
067	Betaseal U-428	\$1.68
019	Paint Front Bumper Fascia	As Needed

- (1) Amount based on Box of 10 Betaprime Single Application Primer Sticks.

CLAIMS INFORMATION

Submit a Primary Part (PP) type line claim using the following claims coding:

DESCRIPTION	PFP	OP CODE	SYM	DIA	FRT
RPL Headlamp Bracket & Betaseal	(1)	RXL4AA	ZA	03	2.0
RPL Headlamp Bracket & Betaseal With AVM		RXL5AA			2.8

- (1) Reference the electronic parts catalog and use the appropriate Headlamp Bracket as the Primary Failed Part (**PFP**).

And if needed on the same line

DESCRIPTION	OP CODE	SYM	DIA	FRT
Color Coat Block Front Bumper	ZG1EE	ZA	03	(2)
Preparation and Mix Time	ZZ99AA			

- (1) Reference the current Infiniti Warranty Flat Rate Manual and use the indicated Flat Rate Time (**FRT**).

HINT: Use **EXPENSE CODE** 019 for paint materials.

AMENDMENT HISTORY

PUBLISHED DATE	REFERENCE	DESCRIPTION
March 31, 2026	ITB26-004	Original bulletin published

