



Date: 11.03.2026 **Affected Models:** Emira 4-Cylinder Vehicles **Affected Regions:** All Markets **Affected Volume:** N/A **Number:** 131-26007

Copy files should be maintained by:

| | | | | | | | |
|-----------------|--|-------------------|--|------------|--|---------------|--|
| Service Manager | | Service Reception | | Supervisor | | Parts Manager | |
|-----------------|--|-------------------|--|------------|--|---------------|--|

TITLE

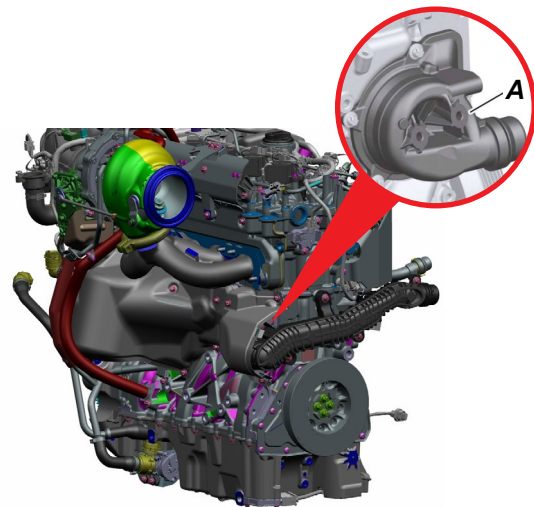
Diagnosing medium temperature engine coolant thermostat operation to prevent unnecessary thermostat replacement.

REASON

The information in this bulletin is intended as a procedure that should be performed if a 4-cylinder Emira has generated Diagnostic Trouble Code (DTC) P2CEF00 Auxiliary Thermostat “A” Stuck Open (see image for thermostat location). Generation of DTC P2CEF00 may also result in:

- Illumination of the Malfunction Indicator Lamp (MIL).
- A low coolant temperature warning message being displayed.

IMPORTANT: Do not continue with the procedure in this bulletin if DTC P2CEF00 has NOT BEEN generated.

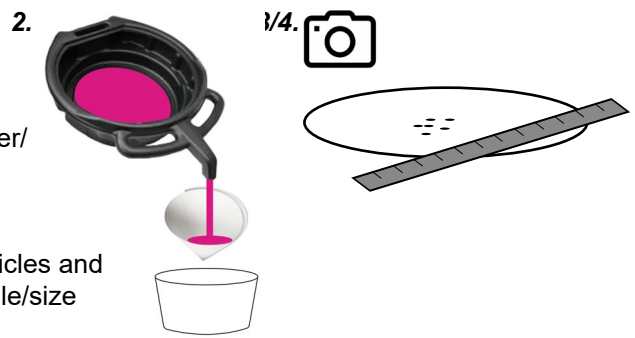


ACTION

If DTC P2CEF00 has been generated, then raise a technical ticket on LCMS (Lotus Cars Management System) and follow the procedure shown below.

Procedure

1. Drain the engine coolant into a clean container*.
2. Filter the coolant through a 200-micron filter paper/ sock.
3. Inspect the filter paper/sock.
4. Place a rule over the filter paper next to any particles and take photographs to give an indication of the scale/size of any particles.
5. Flush the engine coolant system with clean water using a suitable automotive air-powered flushing tool.
6. Remove medium thermostat from engine*.



*Refer to Emira service notes available to view on TIS for coolant drain and vacuum filling process.. Coolant drain, see service notes section: 2 Cooling and A/C > C220 46.01 - Engine Cooling System and Fan > Coolant Replace - 4 Cylinder, replacement.

Medium thermostat removal, see service notes section: 1 Power > 71 Engine > 185 40.13-Water Pump Assemblies and Thermostats-I4 > Medium temperature thermostat - I4, replacement.

Continued...



Inspect for the cold/closed position of the medium temperature thermostat piston.

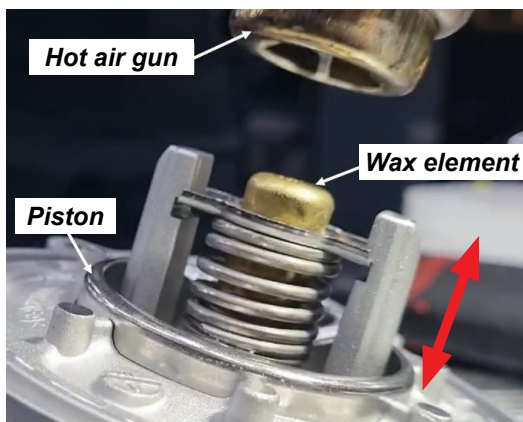


Inspection

✓ The piston should be recessed into the thermostat housing as shown in image A, which is the CORRECT closed position for a cold thermostat.

✗ If the piston is not recessed or protrudes out of the thermostat housing as shown in image B, then it is in the partially or fully open/hot position which is INCORRECT for a cold thermostat.

Action



Check that the thermostat piston moves freely by applying heat from a hot air gun as shown.

If operating correctly:

1. When heated, the thermostat should open (rise out of the housing) ↑.
2. When allowed to cool, the thermostat should close (lower into the housing) ↓.

Action

- Carefully package the thermostat and contact Emira Support using LCMS to arrange collection.
- Fit a new thermostat and gasket and refill the engine with new antifreeze/coolant.

A process flow chart showing all the steps of the thermostat checking procedure is shown on page 4 of this bulletin.

Continued...



Options:

- 1.If the thermostat **MOVES FREELY** when heated and cooled, then refit the original thermostat with a new gasket and refill the engine with new antifreeze/coolant.
- 2.If the thermostat **DOES NOT** move freely when heated and cooled, then fit a **NEW** thermostat and gasket and refill the engine with new antifreeze/coolant. Carefully package the thermostat and contact Emira Support using LCMS to arrange collection.

Warranty Declaration

This technical service bulletin is not intended as a recall procedure, nor will it have an affect on the vehicles warranty period.

CHARGES

The applicable A or B warranty claim option may be submitted on the warranty section of the Lotus Commercial Management System (LCMS).

Option A: Test thermostat, piston working correctly, refit

1 x Thermostat elastomer IC molded seal medium temperature (8896449854) and a sublet value for a suitable quantity of coolant antifreeze. 4.2 hours labour/vehicle, Use operation code 40.13.03-00 Medium Temperature Thermostat Test. Use A code 1F and B code 37.

Quote TSB number QBP-131-26007 in the claim text.

Option B: Test thermostat, piston stuck, renew

1 x Thermostat elastomer IC molded seal medium temperature (8896449854), 1 x Thermostat medium temperature (8896449852) and a sublet value for a suitable quantity of coolant antifreeze. 4.2 hours labour/vehicle, Use operation code 40.13.03-00 Medium Temperature Thermostat Test. Use A code 1F and B code 37.

Quote TSB number QBP-131-26007 in the claim text.

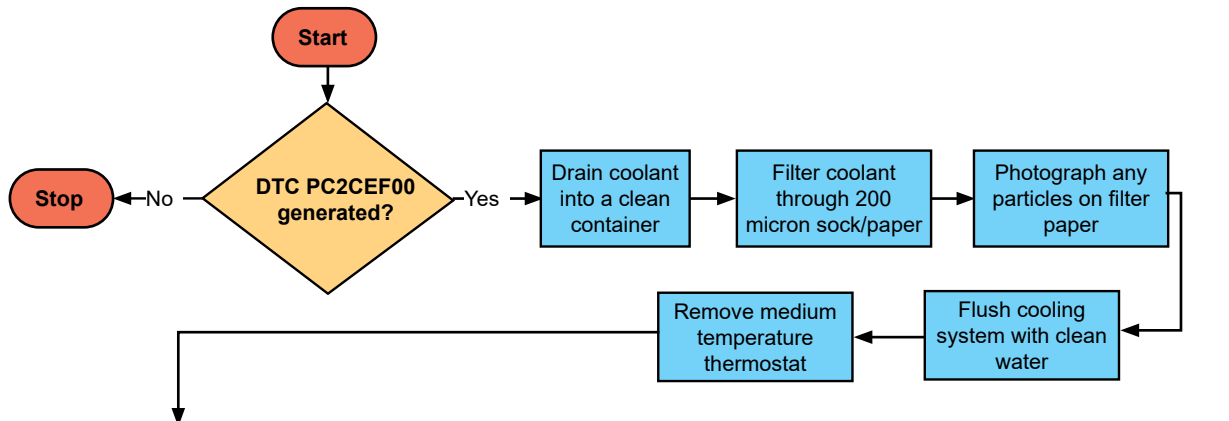
Additional information that must be included for either warranty claim option

- Are particles present in the coolant? (Yes/No).
- If 'Yes' then attach photograph of the particles on the filter paper to the claim.
- Was the thermostat piston stuck open? (Yes/No).
- If the thermostat piston was not stuck open, was the piston free to move? (Yes/No).

Important

- Failure to provide the information above may result in the warranty claim being rejected.
- Any thermostats returned by the dealer as faulty, but found to be operating correctly when tested by Lotus may also result in the warranty claim being rejected.

Ends.



Thermostat Piston Movement Check

