

# 2026 ES 350e and ES 500e Pre-Delivery Service (PDS)

**Service Category** General

**Section** Pre-Delivery Service

**Market** USA

Toyota Supports  
ASE Certification 

## Applicability

YEAR(S)	MODEL(S)	ADDITIONAL INFORMATION
2026	ES350E, ES500E	

## Introduction

Pre-Delivery Service (PDS) is a critical step in satisfying our new car customers. Customer feedback indicates the following areas deserve special attention when performing PDS:

- Careful inspection for paint chips/scratches and body dents/dings.
- Proper operation of electrical accessories (including interior light, clock, and radio reset).
- Interior cleanliness.
- Proper function of mechanical systems.

The PDS process helps identify potential vehicle concerns before customer delivery. After completing the PDS process, maintain accurate PDS records by ensuring the required documents listed below are completed and recorded in accordance with Lexus Warranty Policy.

- GTS+ Health Check
- Completed PDS Check Sheet
- Battery Charge Test Print Out
- GTS+ Tire Pressure Information

Customer retention and proper maintenance of vehicles are and have always been a major focus for Lexus. To help remind customers that regular service is essential to the proper maintenance of the vehicle, dealers are required to install a service reminder sticker before delivery. By doing this, customers will be reminded to return to your dealership for service. Your current service reminder sticker may be used.

## 2026 ES 350e and ES 500e Pre-Delivery Service (PDS)

---

### Introduction (continue)

This bulletin contains the PDS procedures that apply specifically to 2026 model year ES 350e and ES 500e vehicles.

Refer to [L-PDSB-CS001-D](#) the universal *Check Sheet* that contains PDS steps that apply to all 2026 model year Lexus vehicles. To properly perform a complete PDS, you must complete all procedures contained in this TSB as well as the PDS Check Sheet. In addition, if the vehicle is stored for over 30 days, refer to [L-SB-0011-25](#), *Long-Term Vehicle Storage Guidelines*.

Refer to the table below for a definition of terms that may be used in this bulletin.

**Table 1.**

TERM	ACRONYM	DEFINITION
Conventional Vehicle	CV	A vehicle with only a gasoline engine for propulsion
Electrified Vehicle	EV	A vehicle that utilizes a hybrid, plug-in hybrid, or battery electric system for propulsion
Hybrid Electric Vehicle	HEV	A vehicle with both a gasoline engine and an HV battery
Plug-in Hybrid Electric Vehicle	PHEV	A vehicle with both a gasoline engine and an HV battery that can be charged externally
Battery Electric Vehicle	BEV	A vehicle with only an HV battery that can be charged externally
State of Charge	SOC	The remaining capacity available in a battery
12-Volt	12V	Standard 12V battery used to power electrical systems separate from high voltage components
High Voltage	HV	HV battery used to power the electrified vehicle

## 2026 ES 350e and ES 500e Pre-Delivery Service (PDS)

---

### Table of Contents

- [Warranty Policy](#)..... 4
- [Warranty Information](#) ..... 4
- [Required Tools and Equipment](#)..... 4
- [D/C Cut Fuse Installation](#) ..... 5
- [Front License Plate and Mounting Bracket Installation\\*](#) ..... 6
- [Front Emergency Towing Eyelet Removal and Hole Cover Installation](#)..... 8
- [Check Torque of Wheel Fasteners](#)..... 10
- [Tire Pressure Warning System \(TPWS\) Activation and Initialization](#) ..... 10
  - [Activation Procedure](#) ..... 10
  - [Initialization Procedure](#) ..... 11
- [Charging Port Lid Opener Initialization](#)..... 11
- [Seat Position Control ECU Assembly Initialization\\*](#) ..... 11
- [Head Unit System Reset](#)..... 12
- [Driving Assist Setting Enhancement](#) ..... 12
- [Changing The Date & Time Settings](#)..... 12

\*If applicable.

## 2026 ES 350e and ES 500e Pre-Delivery Service (PDS)

---

### Warranty Policy

If the need for additional repairs or adjustment is noted during PDS, the required service should be performed under warranty. Reimbursement will be managed under the warranty policy.

**The Warranty Policy and Procedures Manual requires that you maintain the completed Check Sheet in the customer's file.** If you cannot produce a completed form for each retailed vehicle upon TMS and/or Region/Distributor audit, the PDS payment amount will be subject to debit.

An additional Repair Order completed in conjunction with normal PDS MUST have time punch/flags for service. If multiple repairs are performed, separate time flags MUST be punched for each repair.

### Warranty Information

OP CODE	DESCRIPTION	TIME	OFF	T1	T2
N/A	Not Applicable to Warranty	-	-	-	-

### Required Tools & Equipment

REQUIRED EQUIPMENT	SUPPLIER	PART NUMBER	QTY
Techstream ADVi* w/ Grey Case VIM**	ADE	TSADVUNITECP	1
Techstream Lite w/ Blue & Black Case w/ Detachable Cable**		TSLP3DLR01	

\*Essential SST.

\*\*MFC3 VIM is required for communication with this model.

#### NOTE

- Only ONE of the Techstream units listed above is required.
- GTS+ software version 2026.01.002.02 or later is required.
- Additional Techstream units may be ordered by calling Approved Dealer Equipment (ADE) at 1-800-368-6787 or by visiting *TIS – Diagnostics – Tools & Equipment – Techstream Order Portal*.

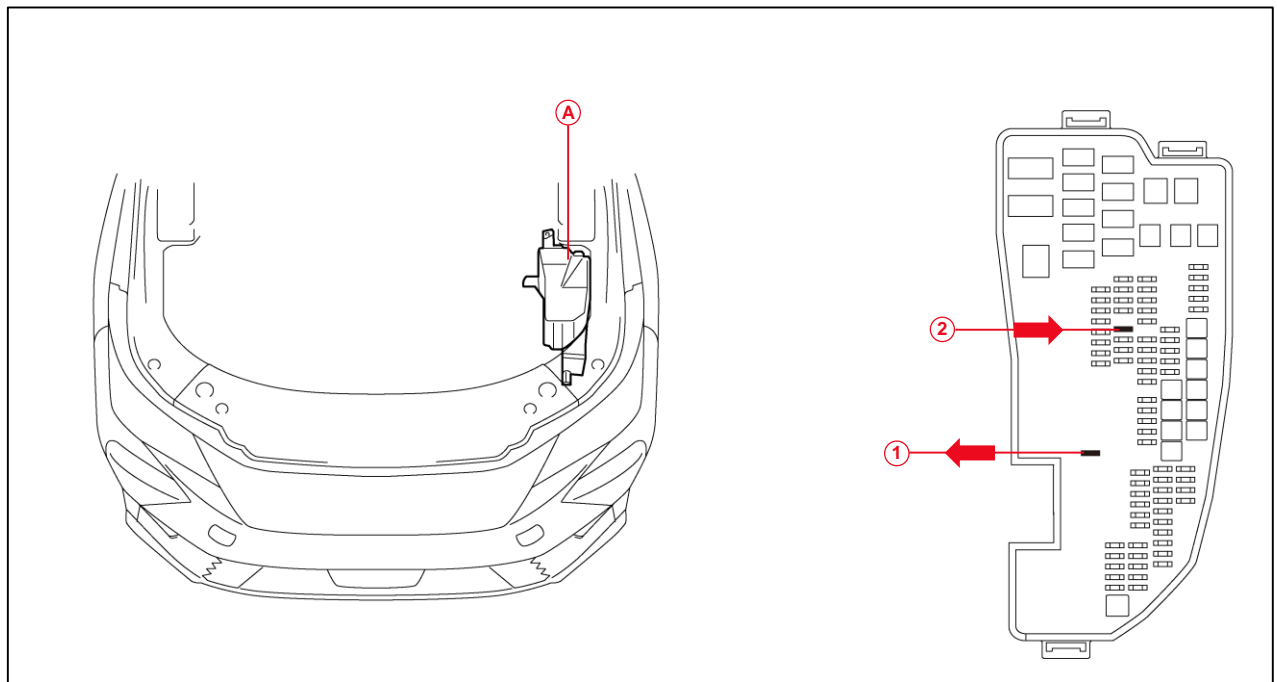
## 2026 ES 350e and ES 500e Pre-Delivery Service (PDS)

### D/C Cut Fuse Installation

Check the location of the D/C Cut fuse (30A). It may have been removed at the assembly plant and temporarily stored in the blank space of the relay block in the engine compartment to minimize battery discharge during transportation and storage.

- If the D/C Cut fuse (30A) is still in its original location in the relay block, proceed with performing a Health Check using GTS+.
- If the D/C Cut fuse (30A) is NOT in its original location, it is necessary to remove the D/C Cut fuse (30A) from the blank space in the relay block and reinstall it to its original location as shown. After installation, confirm ALL related DTCs are cleared.

**Figure 1.**



<b>A</b>	<b>Relay Block</b>
<b>1</b>	<b>Remove the D/C Cut Fuse (30A) (Blank Space)</b>

<b>2</b>	<b>Install the D/C Cut Fuse (30A) (Original Location)</b>
----------	-----------------------------------------------------------

**NOTE**

- With the D/C Cut fuse (30A) removed, if ANY DTCs are detected when the ignition is turned ON during transportation, use GTS+ to clear ALL DTCs AFTER ensuring that there are NO malfunctions.
- While the vehicle is stored at the dealership, disconnect the negative (-) battery terminal to prevent battery discharge. Refer to [L-SB-0019-25](#), *Battery Inspection and Maintenance During PDS*, for battery maintenance information.

## 2026 ES 350e and ES 500e Pre-Delivery Service (PDS)

### Front License Plate and Mounting Bracket Installation

The front license plate mounting bracket and two self-tapping screws are stored in the vehicle at the assembly plant. Follow this procedure to install the front license plate mounting bracket and front license plate in states where it is required by law.

1. Align attachment point "A" of the mounting bracket with the dimples on the front bumper, mark the location of the holes "B" on the front bumper.

**NOTE**

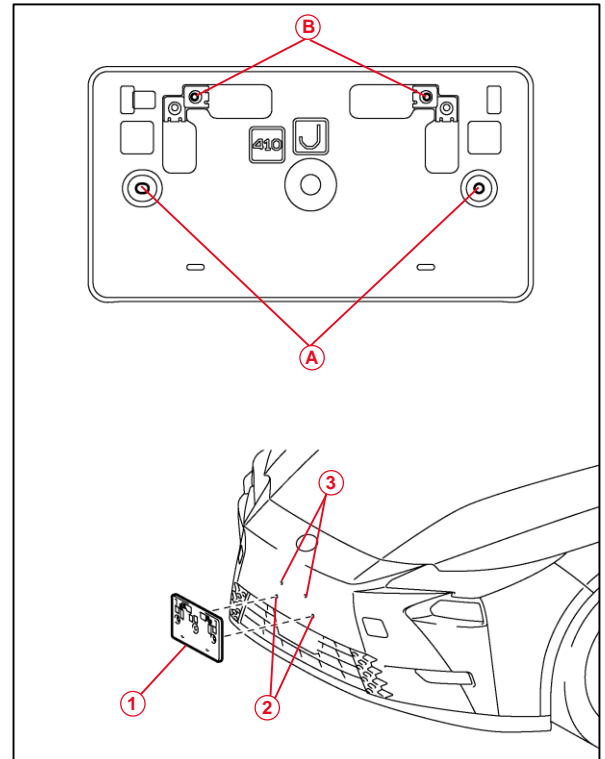
- Attachment point "A" is used for installation of the front license plate mounting bracket to the front bumper.
- Attachment point "B" is used for installation of the front license plate to the mounting bracket.

2. Drill 2 relief holes with a diameter of 14 mm (0.55 in.) at the marks on the front bumper to prevent the license plate bolt from contacting the front bumper.

**NOTICE**

Do not drill holes in the dimples.

**Figure 2.**



<b>1</b>	<b>Mounting Bracket</b>
<b>2</b>	<b>Dimples</b>
<b>3</b>	<b>Mark and Drill Holes</b>
<b>A</b>	<b>Holes "A" for Mounting Bracket</b>
<b>B</b>	<b>Holes "B" for Front License Plate</b>

## 2026 ES 350e and ES 500e Pre-Delivery Service (PDS)

### Front License Plate and Mounting Bracket Installation (continued)

3. Install the mounting bracket to the front bumper using 2 self-tapping screws. Install the driver side self-tapping screw first the install the passenger side.

**NOTICE**

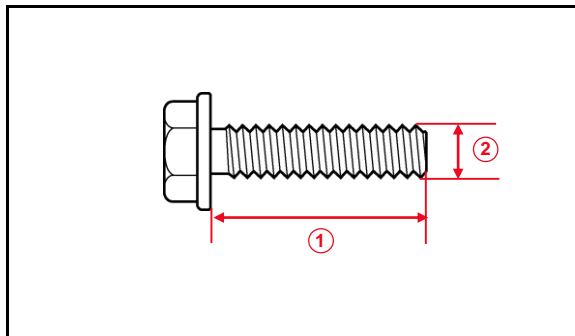
- Do NOT predrill holes into the dimples.
- Do NOT overtighten the self-tapping screws.

4. Install the front license plate onto the mounting bracket using two noncorroding bolts with the following dimensions:

**Nominal Length: 15.0 mm (0.59 in.)**

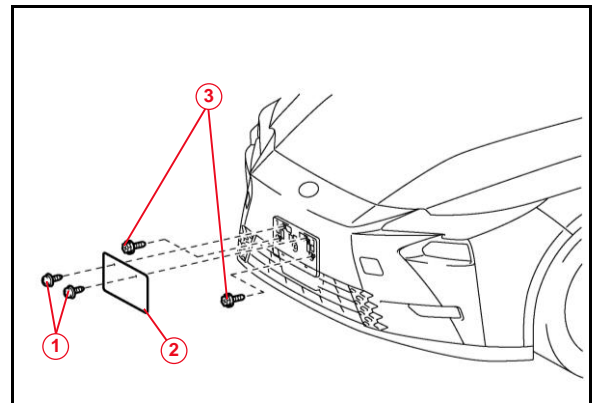
**Diameter: 6.0 mm (0.24 in.)**

**Figure 3.**



<b>1</b>	<b>Nominal Length</b>
<b>2</b>	<b>Diameter</b>

**Figure 4.**



<b>1</b>	<b>Bolts</b>
<b>2</b>	<b>Front License Plate</b>
<b>3</b>	<b>Self-Tapping Screw</b>

## 2026 ES 350e and ES 500e Pre-Delivery Service (PDS)

---

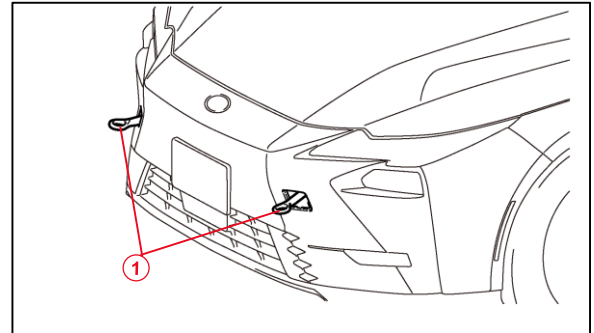
### Front Emergency Towing Eyelet Removal and Hole Cover Installation

1. Remove the front emergency towing eyelets from the front bumper by turning them counterclockwise.

**HINT**

If it is difficult to loosen the emergency towing eyelets, use a steel bar.

**Figure 5.**



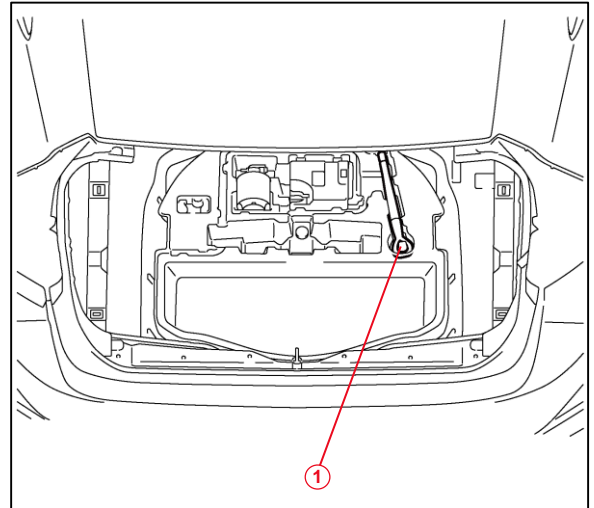
**1** Front Emergency Towing Eyelets

2. Place one of the removed front emergency towing eyelets into the tool tray in the luggage compartment.

**HINT**

Dispose of the other removed front emergency towing eyelet.

**Figure 6.**



**1** Install Self-tapping Screws

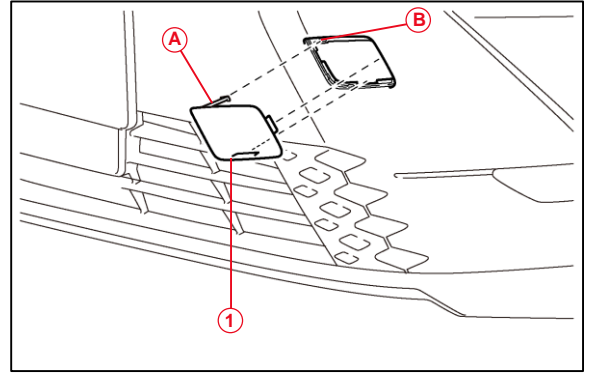
## 2026 ES 350e and ES 500e Pre-Delivery Service (PDS)

---

### Front Emergency Towing Eyelet Removal and Hole Cover Installation (continued)

3. Install the front emergency towing eyelet hole covers which are stored in the console box, onto the front bumper.
  - A. Insert the arrow-shaped part (A) of the emergency towing eyelet hole cover into the hole (B) as shown in the illustration.
  - B. Install the emergency towing eyelet hole cover to the hole of the bumper.

**Figure 7.**



<b>1</b>	Front Emergency Towing Eyelet Hole Cover
<b>A</b>	Arrow-shaped Part
<b>B</b>	Eyelet Hole

## 2026 ES 350e and ES 500e Pre-Delivery Service (PDS)

---

### Check Torque of Wheel Fasteners

Using a calibrated torque wrench, verify the wheel fasteners on each wheel are tightened to at least the specified torque listed in the Repair Manual:

- [2026](#) ES 350e and ES 500e:  
*General – Maintenance – Tire and Wheel – Installation*

**NOTICE**

**Do NOT continue to tighten once verified.**

### Tire Pressure Warning System (TPWS) Activation and Initialization

The tire pressure warning valve and transmitter should be activated and initialized during PDS at the dealership. Follow the procedure below to operate the TPWS.

#### Activation Procedure

1. Connect GTS+ to the diagnostic connector DLC3.
2. Turn the ignition switch ON and verify that the tire pressure warning light remains illuminated after blinking for one minute.
3. For each tire, press the valve core to quickly reduce the tire pressure by 6 psi (0.4 kgf/cm<sup>2</sup>, 40 kPa) or more within 30 seconds.
4. Using GTS+, verify that the Vehicle Control History (RoB) does not display Transmitter Stop codes XC2BA500, XC2BA600, XC2BA700, XC2BA800.
  - A. If the Vehicle Control History (RoB) codes XC2BA500, XC2BA600, XC2BA700, XC2BA800 are displayed, repeat step 3.
  - B. If the Vehicle Control History (RoB) codes XC2BA500, XC2BA600, XC2BA700, XC2BA800 are displayed after repeating step 3, turn the tires 90 – 270 degrees.

**NOTE**

If any Vehicle Control History (RoB) codes other than the Vehicle Control History (RoB) codes XC2BA500, XC2BA600, XC2BA700, XC2BA800 are displayed, refer to the applicable Repair Manual.

## 2026 ES 350e and ES 500e Pre-Delivery Service (PDS)

---

### Tire Pressure Warning System (TPWS) Activation and Initialization (continued)

#### Initialization Procedure

Refer to the applicable Repair Manual for the TPWS initialization procedure.

- [2026](#) ES 350e and ES 500e:

*Suspension – Tire Pressure Monitoring – Tire Pressure Warning Receiver – Initialization*

#### NOTE

- When the outside temperature is significantly colder than the shop's temperature, or there is a significant ambient temperature change overnight, use GTS+ to determine the proper tire pressure.
- From the Health Check Result Status pane, select the refresh button within the Compensation Pressure data display.
- This model has four TPWS sensors.

### Charging Port Lid Opener Initialization

After removing and installing the auxiliary battery or system supply power fuse, you must initialize the charging port lid opener.

- [2026](#) ES 350e and ES 500e:

*Vehicle Exterior – Door / Hatch – Charge Lid Opener Unit – Initialization*

#### NOTE

If the charging cable is connected during initialization, it will be locked during operation.

### Seat Position Control ECU Initialization

The seat ECU must be initialized after reinstalling the D/C Cut fuse during PDS.

Refer to the applicable Repair Manual for the seat Position Control ECU Initialization procedure (procedure 2).

- [2026](#) ES 350e and ES 500e:

*Vehicle Interior – Seat – Front Power Seat Control System (w/ Memory) – Registration*

## 2026 ES 350e and ES 500e Pre-Delivery Service (PDS)

---

### Head Unit System Reset

Before vehicle delivery, confirm that the head unit display shows the welcome screen with the options “Create Profile” and “Sign In” when the ignition is in the ON position. If the welcome screen does not appear, complete the following steps:

1. Turn the engine switch (power switch) to the ON position (ON mode).
2. Enter the Following menus: *Settings* (gear icon) – *Profile*.
3. Select “Reset System”.

#### NOTE

Ensure the head unit remains ON until the welcome screen is displayed. The head unit may reset automatically during the process.

### Driving Assist Setting Enhancement

To enhance user experience please make the following adjustments to Driving Assist. The following two adjustments will be made from the *Notifications* menu.

1. Turn the engine switch (power switch) to the ON position (ON mode).
2. Enter the following menus: *Settings* (gear icon) – *Driving Assist*.
3. Select “*Notifications*.”
4. Select the *Road Sign Assist (RSA) – Settings* (gear icon).
5. Select the blue text “*Speed limit +3*” to the right of *Speed Limit Caution Timing*. At the popup select *Speed limit +5 mph*.
6. At the upper left portion of the screen select the blue text “*Notifications*”.
7. Select “*Driver Monitor*”.
8. Select the blue text “*High*” to the right of *Warning sensitivity*. At the popup select “*Low*”.

#### NOTE

Only complete during PDS or after the Head Unit System Reset has been completed.

### Changing The Date & Time Settings

Prior to vehicle delivery, it is necessary to turn the Set date & time automatically setting to the ON position.

1. Turn the engine switch (power switch) to the ON position (ON mode).
2. Navigate the following menus in the head unit: *Settings* (gear icon) – *General – Date & Time*.
3. Ensure the Set date & time automatically function is set to the ON position.