

Damage to Nano Plug Contacts Due to Utilization of Incorrect Measuring Equipment (12/26)

Model Line: **All model lines**



Information

The nano measuring tips described can generally be used on all Porsche vehicles even if this Technical Information is not available for every specific vehicle in PCSS.

Model Year: **As of 2017**

Concerns: **MQS nano plug contacts (Micro Quadlok system) / MCON plug contacts (Micro Connection)**

Situation: **Electrical fault on vehicles due to damaged plug contacts as a result of an electric measurement using unsuitable measuring equipment.**

As a result, repeat repairs and/or new faults may occur on the vehicle.

Action: When carrying out electrical measurements or checking the pin preload on nano plug contacts, always use the prescribed nano measuring tips. Replace damaged nano plug contacts.

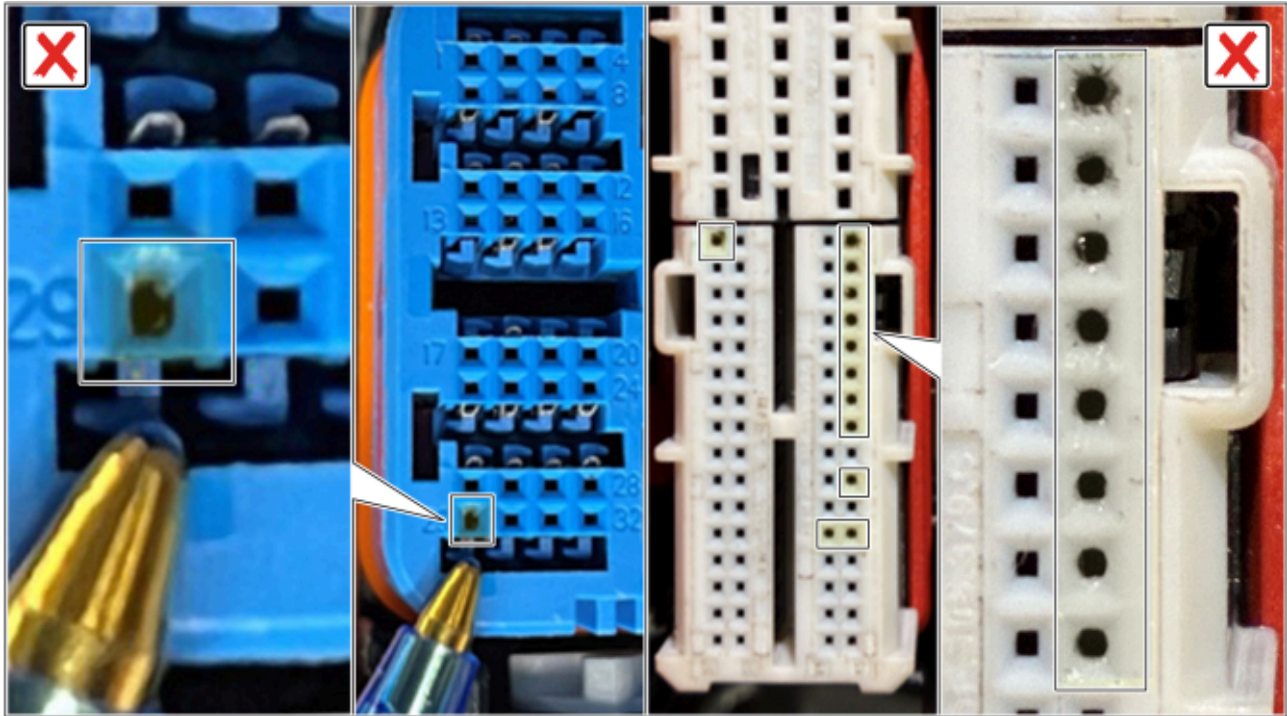


Information

Nano plug contacts are available on various electric plug connections in the vehicle, for example on:

- DME control units
- various main control units (HCP)
- high-voltage pulse-controlled inverter control unit
- headlight control units

Due to the small contact surface, **nano plug contacts** are very sensitive and can be damaged by unsuitable measuring equipment; **careful handling** during measurement is mandatory.



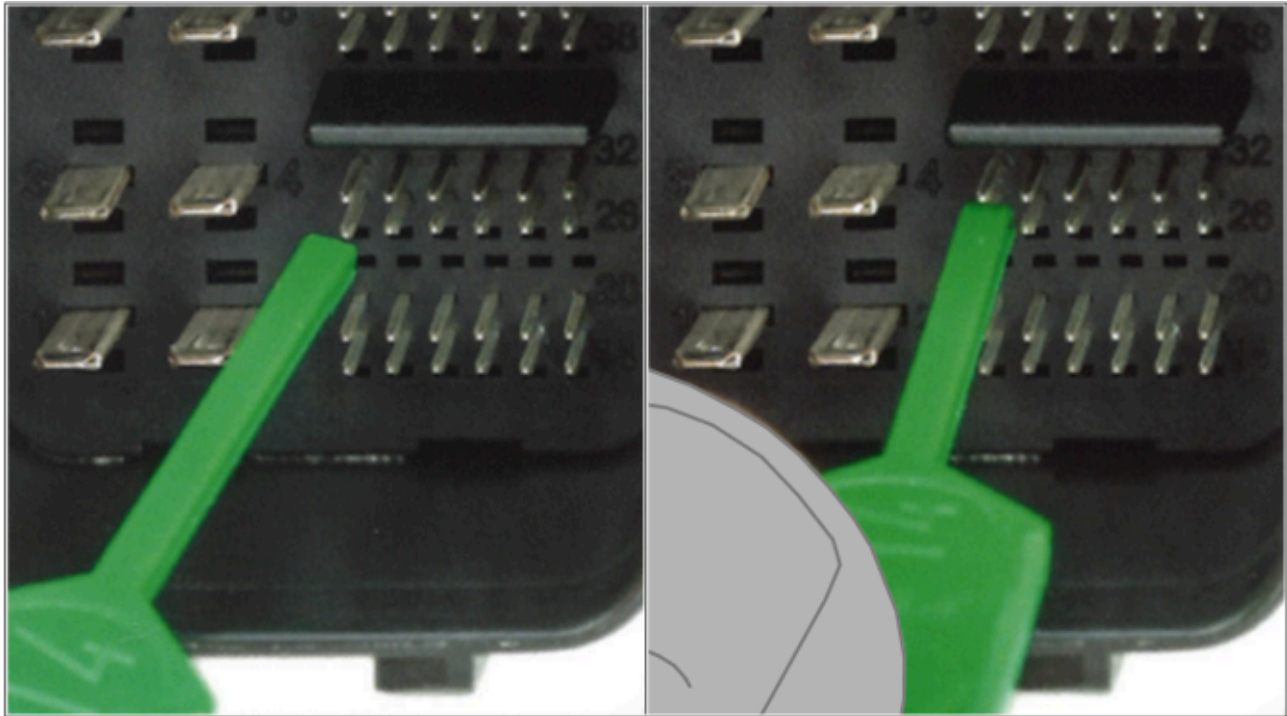
Damaged nano plug contacts due to unsuitable measuring equipment

The only reliable method for testing **nano plug contacts** is the use of the specified **nano measuring tips**:

- **V.A.G 1594/51 - Nano measuring line** (order parts kit with 2 measuring tips and contact gauge)
- **ASE40107500000**

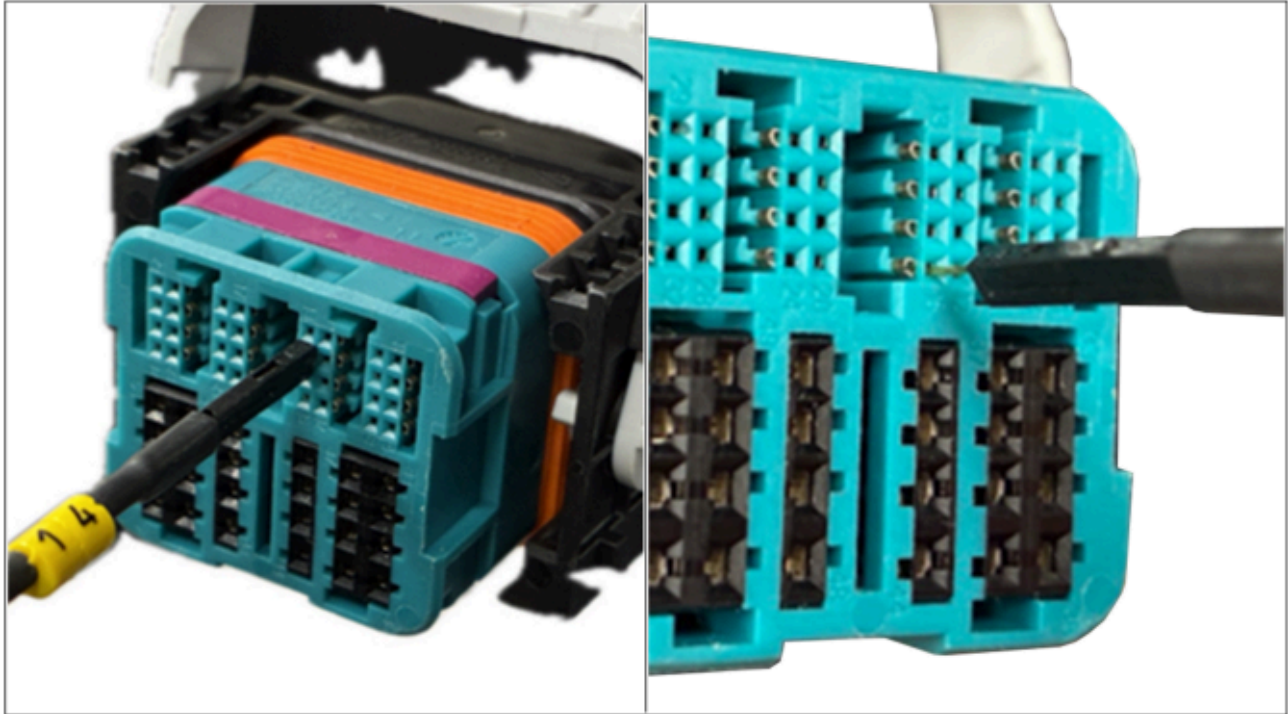
The contact gauge 99-000288 (green) included in the order parts kit V.A.G 1594/51 - Nano measuring line can be used for checking whether these are **nano plug contacts**.

This must be positioned correctly on the rectangular shape of the plug contacts (0.4 x 0.5 mm / 0.015 x 0.019 in) and should be **easy to push onto a pin of correct dimensions**.



Contact gauge 99-000288

If this is the case, the use of the **nano measuring tips** from the order parts kit is correct for the further work procedure. Make sure that these are inserted correctly into the rectangular shape of the plug contacts (0.4 x 0.5 mm / 0.015 x 0.019 in).



Nano measuring tips

For further measurements, such as voltage and current measurements on the DME control unit and the high-voltage pulse inverter control unit in the **active system**, the following measuring equipment is recommended:

- **VAS 6606 - Isolator box, 198-pin**
- **VAS 6606/25 - Test adapter**

Important Notice: Technical Bulletins issued by Porsche Cars North America, Inc. are intended only for use by professional automotive technicians who have attended Porsche service training courses. They are written to inform those technicians of conditions that may occur on some Porsche vehicles, or to provide information that could assist in the proper servicing of a vehicle. Porsche special tools may be necessary in order to perform certain operations identified in these bulletins. Use of tools and procedures other than those Porsche recommends in these bulletins may be detrimental to the safe operation of your vehicle, and may endanger the people working on it. Properly trained Porsche technicians have the equipment, tools, safety instructions, and know-how to do the job properly and safely. Part numbers listed in these bulletins are for reference only. The work procedures updated electronically in the Porsche PIWIS diagnostic and testing device take precedence and, in the event of a discrepancy, the work procedures in the PIWIS Tester are the ones that must be followed.

© 2026 Porsche Cars North America, Inc.