

Rattling Noises from the Front Area of the Front Overhead Console (SY 14/26)

Model Line: **Panamera (YAA/YAB)**

Model Year: **As of 2024**

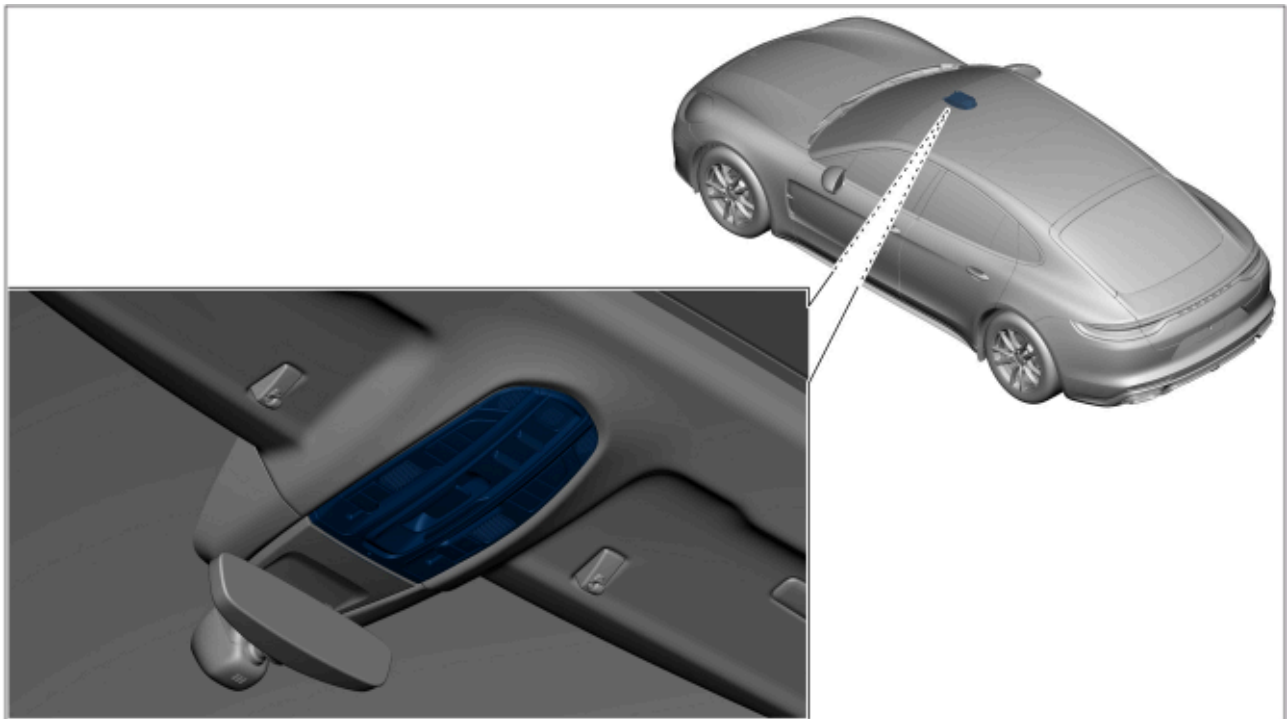
Concerns: **Front overhead console**

Symptom: **The customer complains about rattling noises from the front overhead console area.**

Cause: Unfavourable tolerance pairings can cause rattling noises under certain preconditions on the front guide of the front overhead console in the roof frame.

Remedial Action: If there is a customer complaint, rework the guide pins on the front overhead console.

Installation Position:



Installation position front overhead console

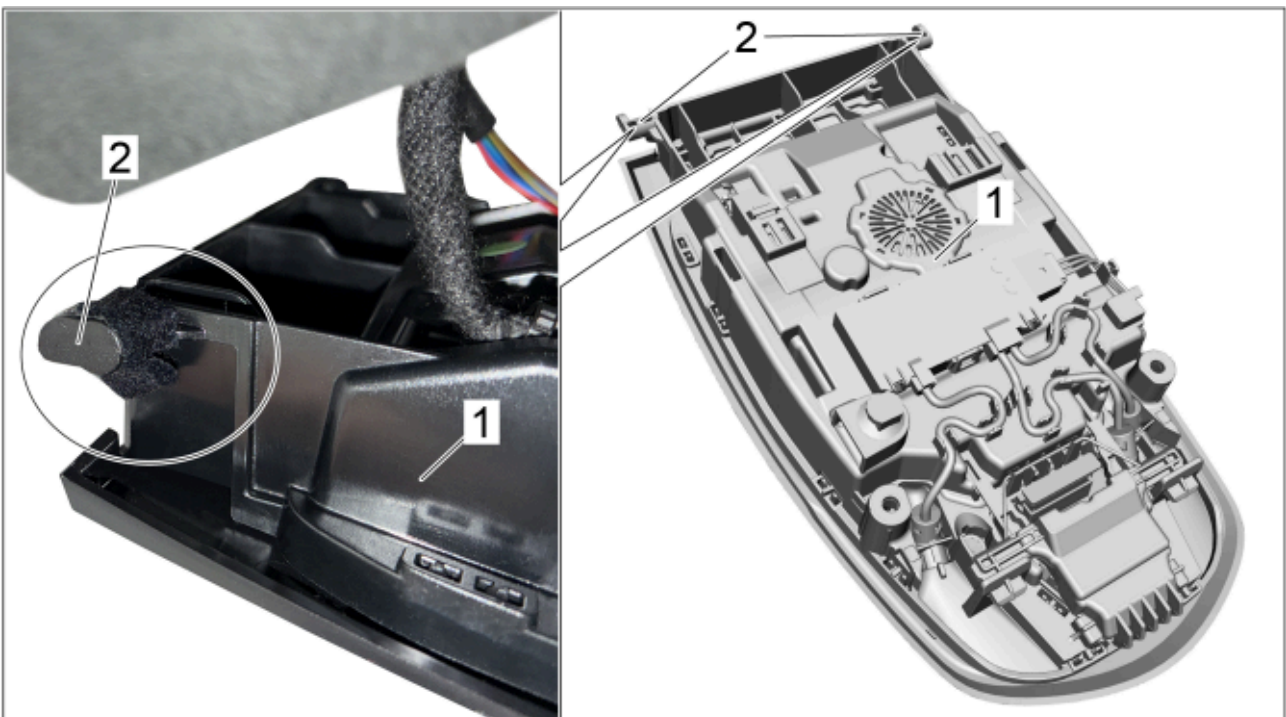
Required material

Material: **Required materials** (usually already available in the Porsche Center)

Part No.	Designation	Quantity
....	⇒ Felt tape, thickness 0.5 - 0.8 mm – commercially available	As required

Reworking front overhead console

- Work Procedure: 1 Remove the front overhead console.
⇒ *Workshop Manual '708319 Removing and installing front overhead console'*
- 2 Reworking front ⇒ *Guide pin for front overhead console -1-* overhead console.
To do this, affix ⇒ *Guide pin for front overhead console -2-* a layer of felt tape with a thickness of 0.5 mm - 0.8 mm all the way around on both guide pins ⇒ *Guide pin for front overhead console -Circle-*.



Guide pin for front overhead console

- 3 Install the front overhead console.
⇒ *Workshop Manual '708319 Removing and installing front overhead console'*

Labor position and PCSS encryption

Labor position:

APOS	Labor operation	I No.
70834940	Reworking front overhead console	

PCSS encryption:

Location (FES5)	70830	Front overhead console
Damage type (SA4)	2014	rattles

Important Notice: Technical Bulletins issued by Porsche Cars North America, Inc. are intended only for use by professional automotive technicians who have attended Porsche service training courses. They are written to inform those technicians of conditions that may occur on some Porsche vehicles, or to provide information that could assist in the proper servicing of a vehicle. Porsche special tools may be necessary in order to perform certain operations identified in these bulletins. Use of tools and procedures other than those Porsche recommends in these bulletins may be detrimental to the safe operation of your vehicle, and may endanger the people working on it. Properly trained Porsche technicians have the equipment, tools, safety instructions, and know-how to do the job properly and safely. Part numbers listed in these bulletins are for reference only. The work procedures updated electronically in the Porsche PIWIS diagnostic and testing device take precedence and, in the event of a discrepancy, the work procedures in the PIWIS Tester are the ones that must be followed.

© 2026 Porsche Cars North America, Inc.