

<b>Subject:</b>  <b>KEEP THE PROTECTIVE FILMS ON DOOR GARNISH</b>	<b>Service Alert No.: SA-019/26</b>
	<b>Last Issued : 03/19/2026</b>

## BULLETIN NOTES

This SA supersedes the previously issued SA(s) listed below. The changes are noted in Red.

Previous SAs:	Date(s) Issued:
SA-045/22	12/06/22 and 07/12/22
SA-006/21	01/20/21

## APPLICABLE MODEL(S)/VINS

2025-2026 Mazda3 (Japan built)

2025-2026 CX-5

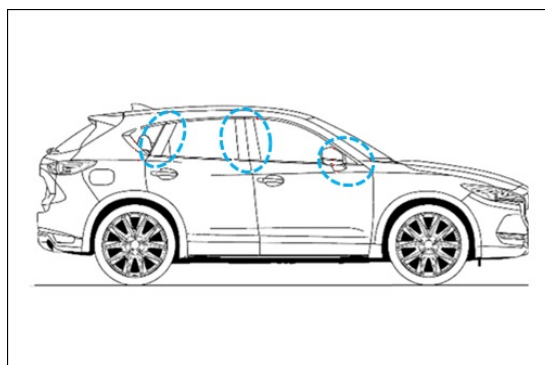
**NOTE:** All vehicles with protective films applied to the piano black door garnishes of the following models are applicable to this Service Alert.

## DESCRIPTION

The purpose of this Service Alert is to remind dealers to keep the protective films on the piano black door garnishes attached until just before delivering the vehicle to the customer. The protective films are attached on new vehicles when shipped from the factory in order to avoid being scratched during transportation and while in dealer stock.

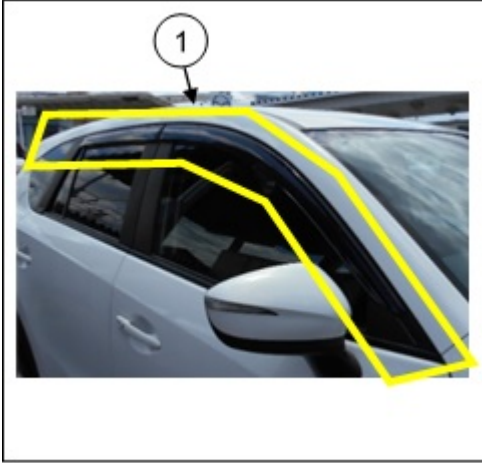
### NOTE:

- Remove the protective films after cleaning the vehicle.
- If any adhesive residue remains on the surface of the door garnish, attach the adhesive side of the protective film on the area again, and then peel it off to remove the residue.
- Refer to the image below for the location of the protective films (4 sheets of films in each side).

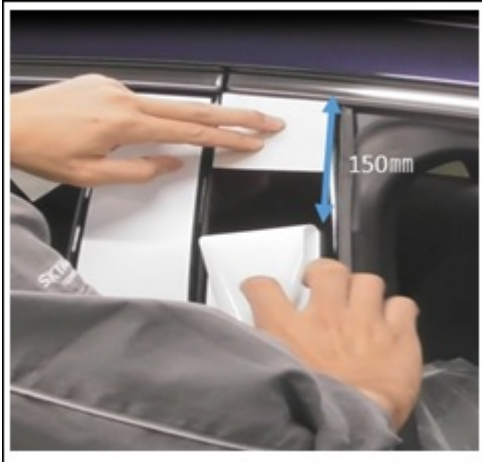


**CONSUMER NOTICE:** The information and instructions in this bulletin are intended for use by skilled technicians. Mazda technicians utilize the proper tools/ equipment and take training to correctly and safely maintain Mazda vehicles. These instructions should not be performed by "do-it-yourselfers." Customers should not assume this bulletin applies to their vehicle or that their vehicle will develop the described concern. To determine if the information applies, customers should contact their nearest authorized Mazda dealership. Mazda North American Operations reserves the right to alter the specifications and contents of this bulletin without obligation or advance notice. All rights reserved. No part of this bulletin may be reproduced in any form or by any means, electronic or mechanical--including photocopying and recording and the use of any kind of information storage and retrieval system ---without permission in writing.

When installing accessory side window deflectors (1), follow the steps below.

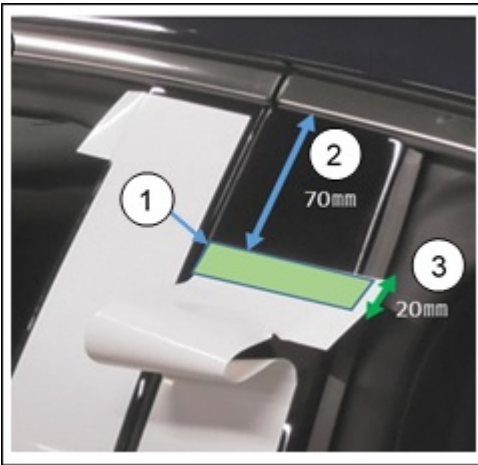


1. Peel off the protective film on the front B- pillar 150mm from the top.



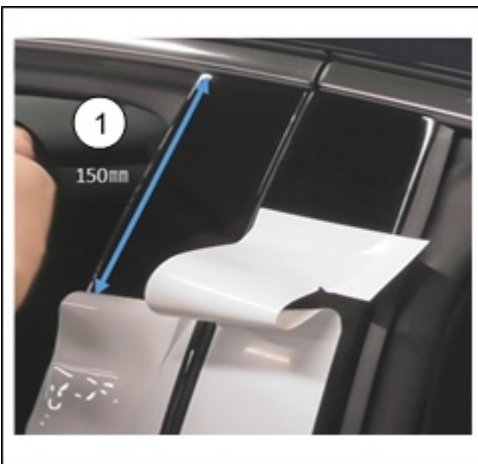
**CONSUMER NOTICE:** The information and instructions in this bulletin are intended for use by skilled technicians. Mazda technicians utilize the proper tools/ equipment and take training to correctly and safely maintain Mazda vehicles. These instructions should not be performed by "do-it-yourselfers." Customers should not assume this bulletin applies to their vehicle or that their vehicle will develop the described concern. To determine if the information applies, customers should contact their nearest authorized Mazda dealership. Mazda North American Operations reserves the right to alter the specifications and contents of this bulletin without obligation or advance notice. All rights reserved. No part of this bulletin may be reproduced in any form or by any means, electronic or mechanical---including photocopying and recording and the use of any kind of information storage and retrieval system ---without permission in writing.

2. Align the top edge (1) of the protective film with the position of 70mm (2) from the top of the front B-pillar, and then stick 20mm (3) from the edge of the protection film (1) onto the front B-pillar.



3. Peel off the protective film on the rear B-pillar 150mm/100mm (1) from the top.

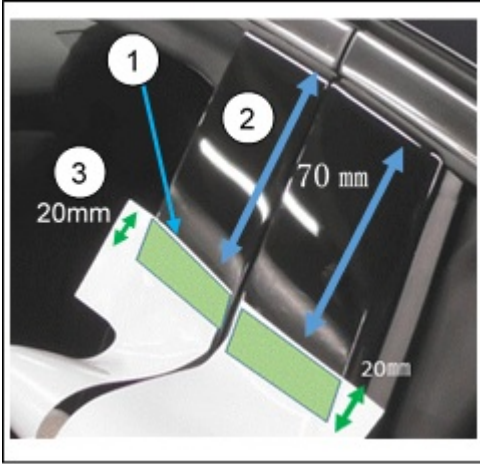
- Mazda3: 150mm
- CX-5: 100mm



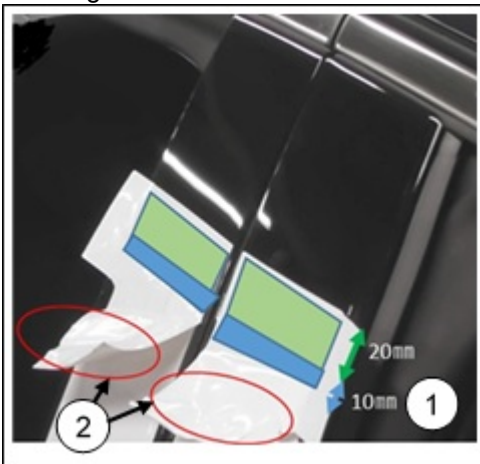
**CONSUMER NOTICE:** The information and instructions in this bulletin are intended for use by skilled technicians. Mazda technicians utilize the proper tools/ equipment and take training to correctly and safely maintain Mazda vehicles. These instructions should not be performed by "do-it-yourselfers." Customers should not assume this bulletin applies to their vehicle or that their vehicle will develop the described concern. To determine if the information applies, customers should contact their nearest authorized Mazda dealership. Mazda North American Operations reserves the right to alter the specifications and contents of this bulletin without obligation or advance notice. All rights reserved. No part of this bulletin may be reproduced in any form or by any means, electronic or mechanical---including photocopying and recording and the use of any kind of information storage and retrieval system ---without permission in writing.

4. Align the top edge (1) of the protective film with the position of 70mm/45mm (2) from top of rear B- pillar, and then stick 20mm (3) from the edge of the protective film (1) onto the rear B-pillar.

- Mazda3: 70mm
- CX-5: 45mm



5. Stick 10mm (1) more of the each protective film onto the front and rear B-pillar. Stick the slack part (2) of the protection films together at each side.



**CONSUMER NOTICE:** The information and instructions in this bulletin are intended for use by skilled technicians. Mazda technicians utilize the proper tools/ equipment and take training to correctly and safely maintain Mazda vehicles. These instructions should not be performed by "do-it-yourselfers." Customers should not assume this bulletin applies to their vehicle or that their vehicle will develop the described concern. To determine if the information applies, customers should contact their nearest authorized Mazda dealership. Mazda North American Operations reserves the right to alter the specifications and contents of this bulletin without obligation or advance notice. All rights reserved. No part of this bulletin may be reproduced in any form or by any means, electronic or mechanical---including photocopying and recording and the use of any kind of information storage and retrieval system ---without permission in writing.

## 6. Proper installation shown.



**CONSUMER NOTICE:** The information and instructions in this bulletin are intended for use by skilled technicians. Mazda technicians utilize the proper tools/ equipment and take training to correctly and safely maintain Mazda vehicles. These instructions should not be performed by "do-it-yourselfers." Customers should not assume this bulletin applies to their vehicle or that their vehicle will develop the described concern. To determine if the information applies, customers should contact their nearest authorized Mazda dealership. Mazda North American Operations reserves the right to alter the specifications and contents of this bulletin without obligation or advance notice. All rights reserved. No part of this bulletin may be reproduced in any form or by any means, electronic or mechanical---including photocopying and recording and the use of any kind of information storage and retrieval system ---without permission in writing.