

Preview Solution CBR-2564-1

Check Radar Pop-up Message - VN (4), PR, AN (4)

Published 17 March 2026

Valid For

Volvo Chassis - VN (4)

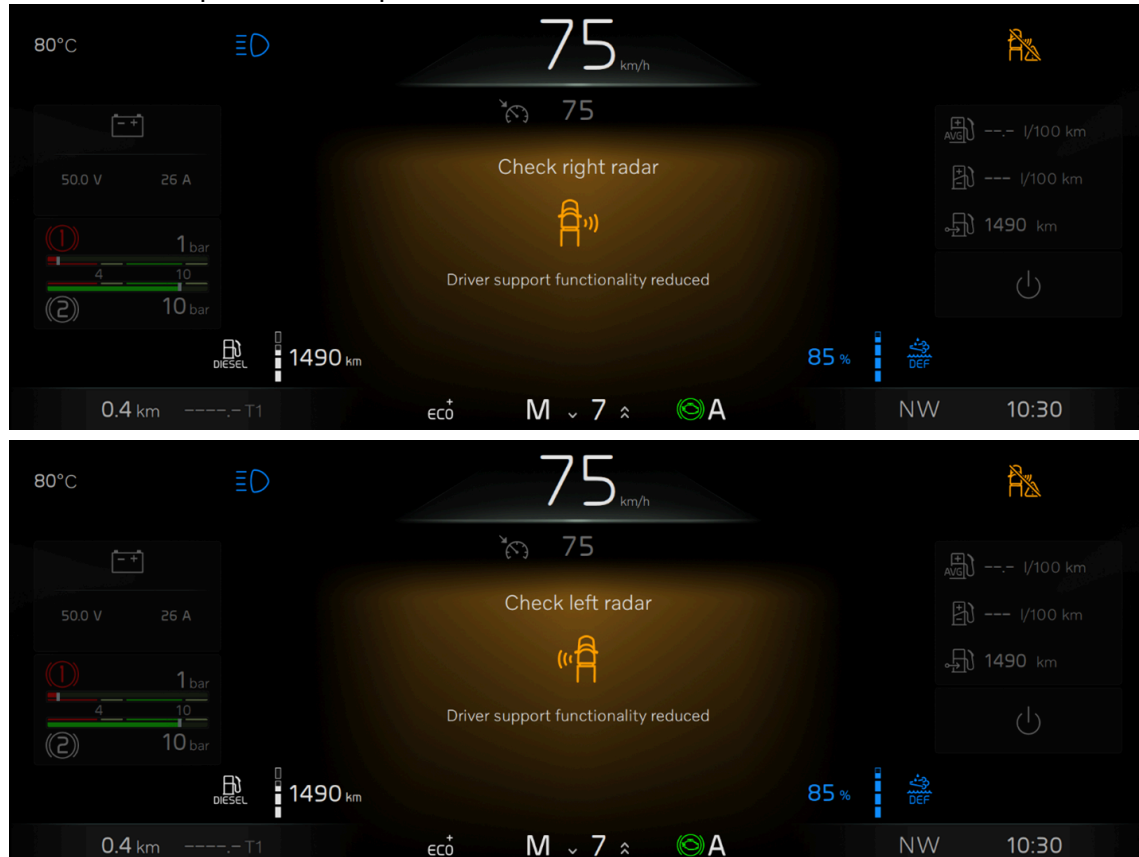
Mack Chassis - AN (4), PR

Model Year - 2024 to current

The purpose of this CBR is to address popup message saying to check right or left side radar.

Overview

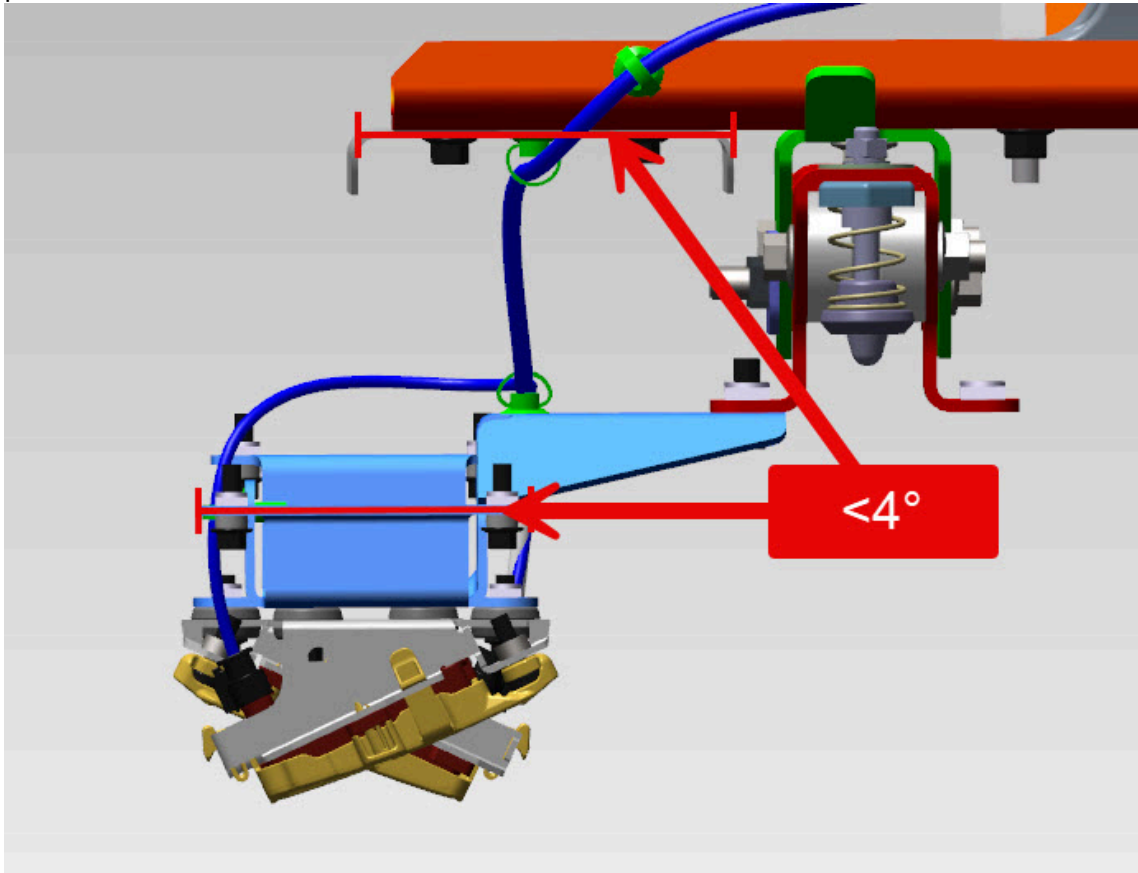
There have been reports of the yellow warning for “Check right radar” and “Check left radar” popping up in the dash. This may be caused by either a radar bracket misalignment or a failed calibration procedure due to a waiting period not included in the calibration process. See pictures below



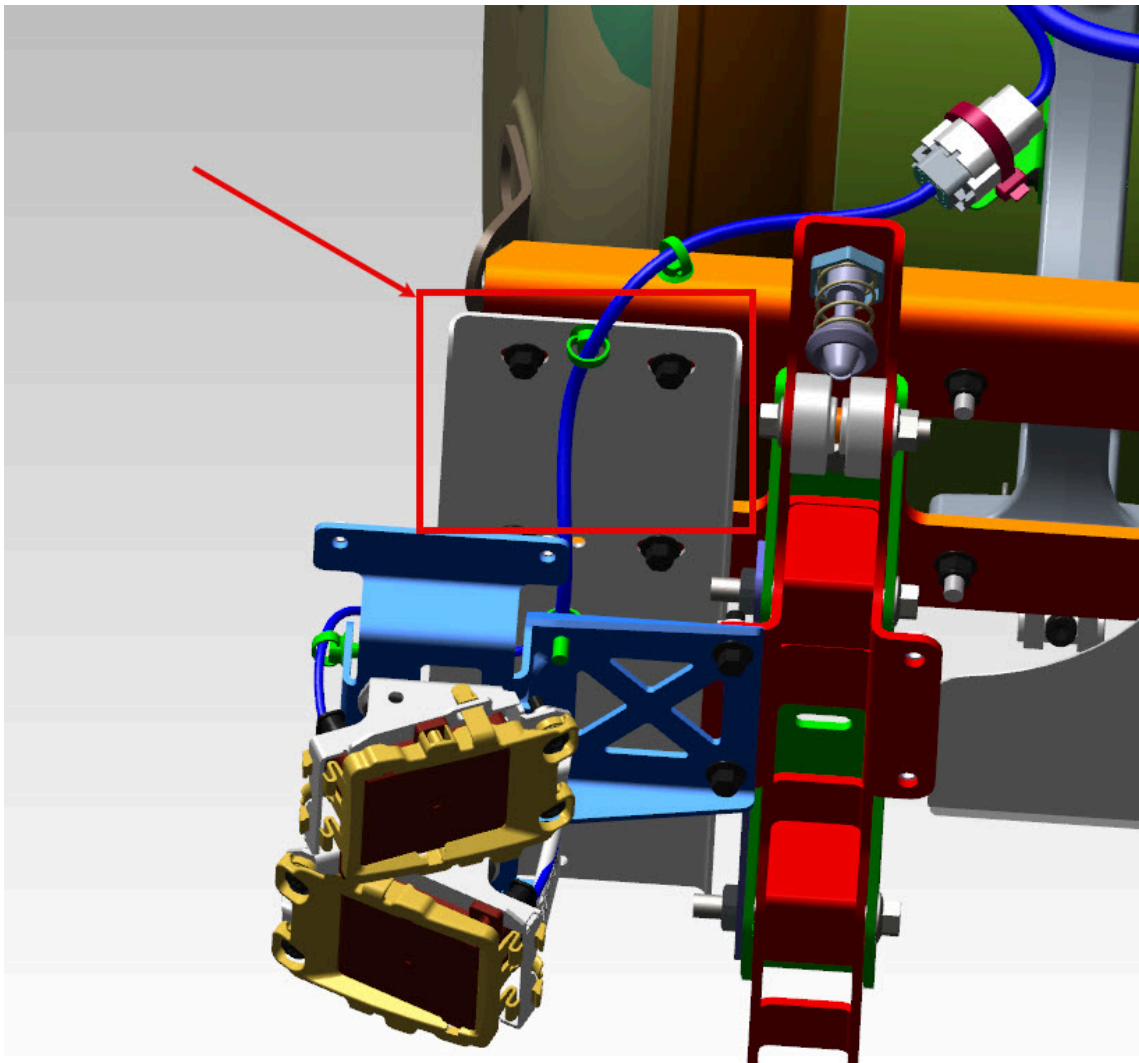
Live UI

Inspection

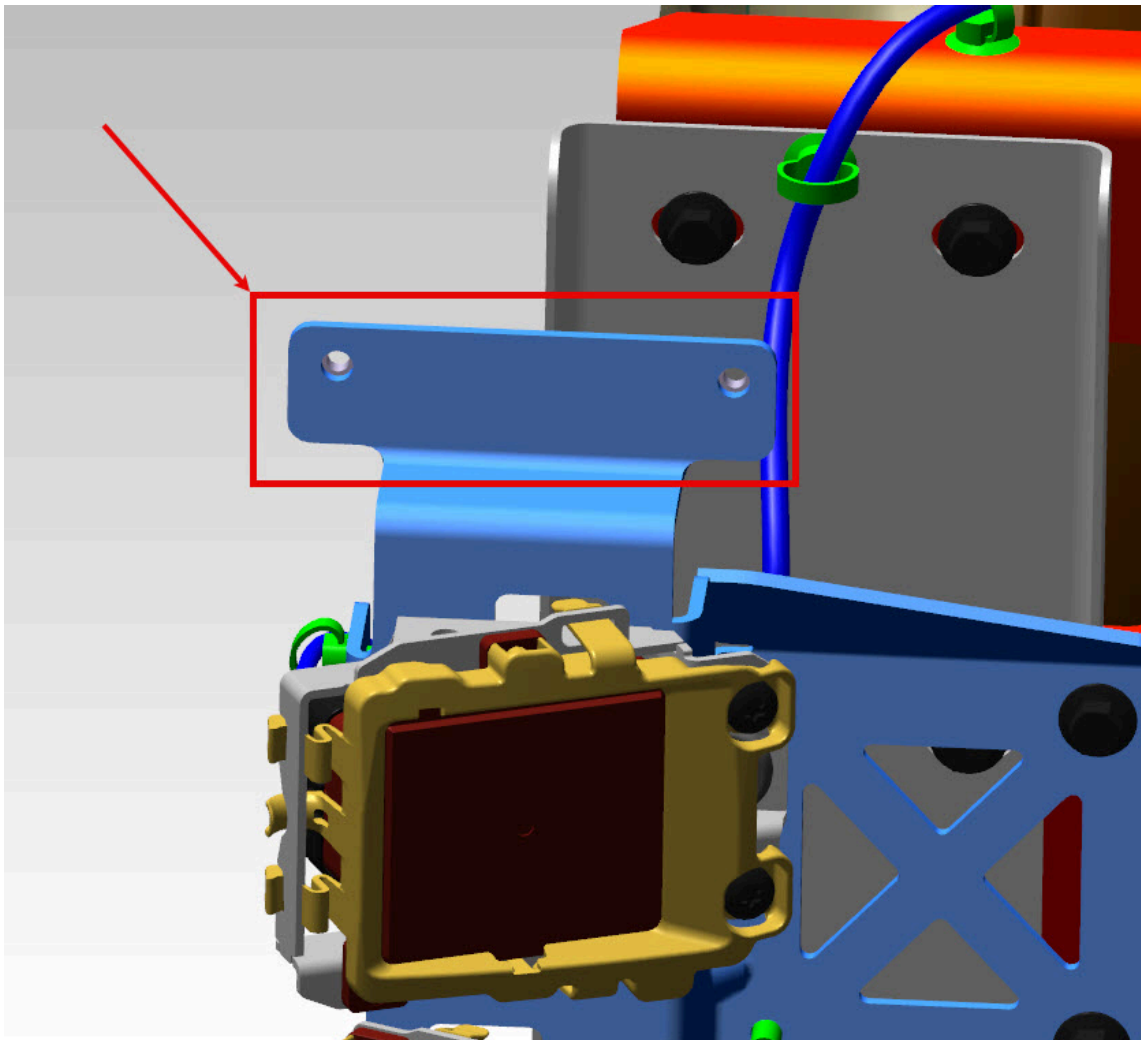
Ensure the radar bracket is parallel or less than 4° from reference point. (See picture below)



To verify the angle, it is recommended to use a digital protractor. Zero the protractor on the mounting bracket behind the sensor. (see picture below)



Once protractor is zeroed, measure off of the flange for mounting the radar cover. (see picture below) NOTE: Radar cover will need to be removed for this inspection. Also ensure between the radars and cover there is no dirt or debris.



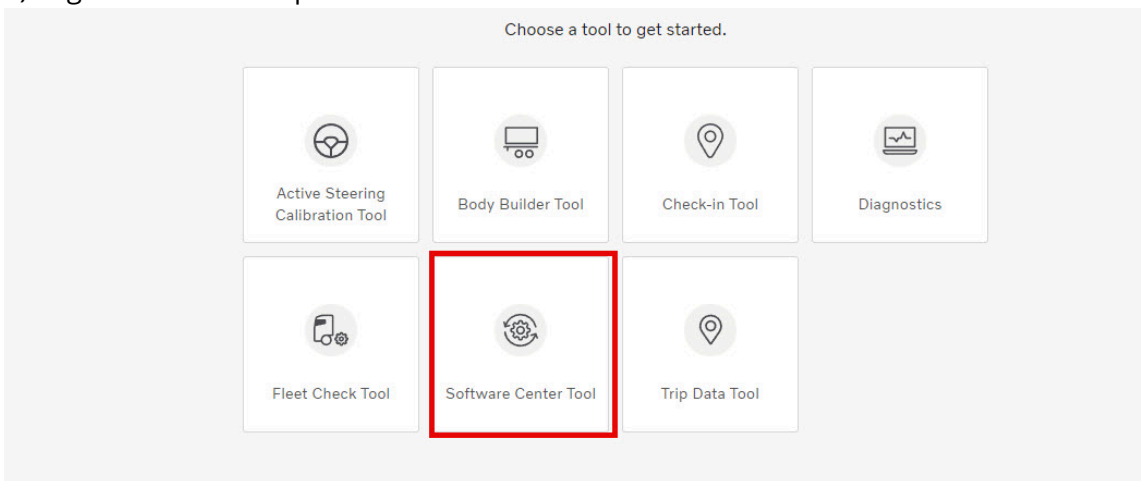
If the measurement is less than 4°, please proceed to calibration of the side radar below. If the measurement is greater than 4°, it is acceptable to bend the bracket to be within tolerance. Once bracket is in spec, proceed to calibration below.

Calibration

To calibrate the sensor(s), there are two options. You can use Workshop Tool Box or PTT.

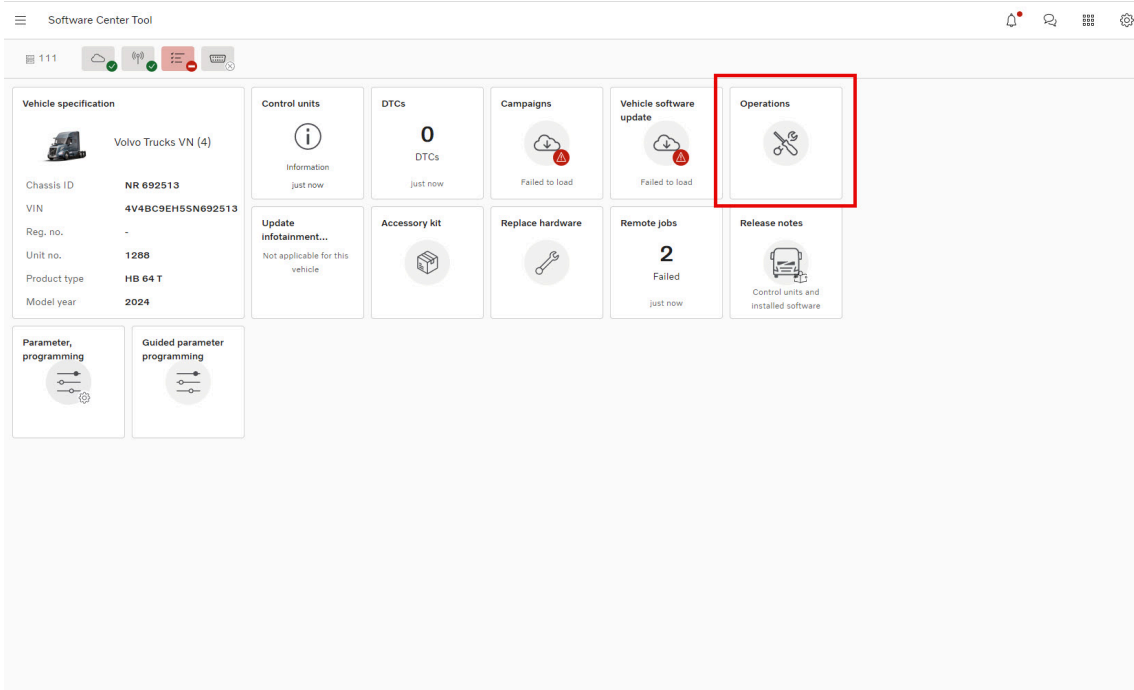
Workshop Tool Box

1) Log in to WSTB and proceed to Software Center.



Live UI

2) Connect to the truck and proceed to Operations widget.



3) Select operation 36108-3 and click start

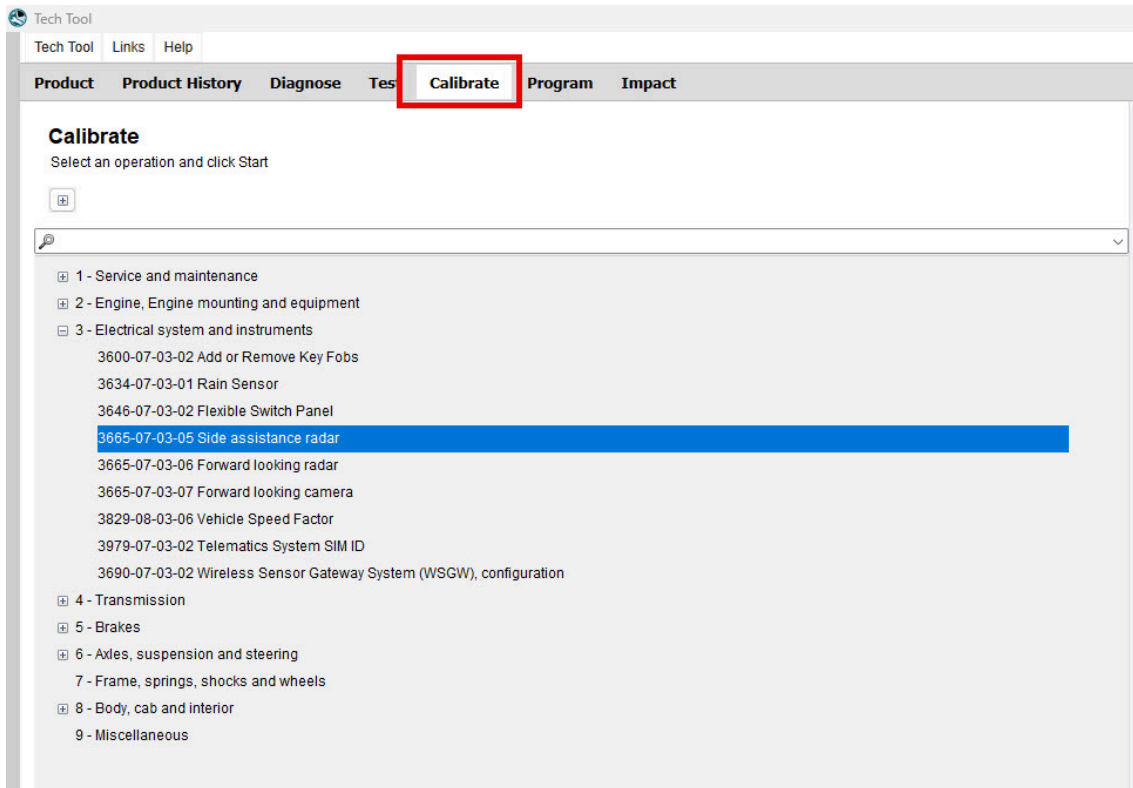


4) Run operation, when calibration is completed do not follow closing steps in WSTB, Instead follow the steps below:

- 1) Stop the truck in a safe location
- 2) Set the ignition to the OFF position for a minimum of 3 minutes.
- 3) After 3 minutes, the ignition can be set back to ON.
- 5) After completing the operation, road test truck to ensure the popup does not return.

PTT

- 1) Log in to PTT and connect the truck.
- 2) Proceed to Calibrate tab and select operation 3665-07-03-05 Side Assistance Radar



3) Once the calibration is completed, DO NOT follow the closing actions, instead follow the instruction below:

- 1) Stop the truck in a safe location
- 2) Set the ignition to the OFF position for a minimum of 3 minutes.
- 3) After 3 minutes, the ignition can be set back to ON.
- 4) After completing the operation, road test truck to ensure the popup does not return.

Related links and attachments

No links or attachments available



Share

to others that might find it helpful



Feedback

[Give feedback](#)

to help improve the content of this article