

- ATTENTION:**
- GENERAL MANAGER
  - PARTS MANAGER
  - CLAIMS PERSONNEL
  - SERVICE MANAGER

IMPORTANT - All Service Personnel Should Read and Initial in the boxes provided, right.


© 2026 Subaru of America, Inc. All rights reserved.



QUALITY DRIVEN® SERVICE

## PRODUCT ENHANCEMENT PROGRAM

**APPLICABILITY:** 2026MY Outback Touring  
2026MY Outback Touring XT

**NUMBER:** EEA-26R

**DATE:** 01/05/26

**REVISED:** 03/16/26

**SUBJECT:** EYESIGHT Product Enhancement  
Reprogramming File Availability

### INTRODUCTION:

This Product Enhancement Program announces the availability of a reprogramming file pack for the eyesight control module. This software update package will allow the following functions to operate:

1. Hands-Free Assist
2. Active Lane Change Assist
3. Pre-Curve Speed Control
4. Automatic Resume Assist
5. Emergency Stop Assist with Safe Lane Selection

### PFC FILE APPLICABILITY:

Model	Specification	File Description	New CID
Outback	Touring, Touring XT	87501AR002.pfc	19210804460F2108053D

### SERVICE PROCEDURE / INFORMATION:

**REMINDER:** Customer satisfaction and retention starts with performing quality repairs.

**Step 1:** All 2026MY Outback Touring and Outback Touring XT models can use these new features as long as the update has been performed.

To check if the update is complete, turn the ignition (IGN) on. The EyeSight Assist Monitor will light up for a few seconds. If the reprogramming has been completed, both end LEDs will blink blue twice. If the blue indicators blink twice, there is no need to perform the reflash.



**Caution: SSM5-D requires the use of the Denso Dst-010 interface.  
Ensure the Eyesight camera is below 176° F(80° C) before programming.**

**CAUTION: VEHICLE SERVICING PERFORMED BY UNTRAINED PERSONS COULD RESULT IN SERIOUS INJURY TO THOSE PERSONS OR TO OTHERS.**

Subaru Service Bulletins are intended for use by professional technicians ONLY. They are written to inform those technicians of conditions that may occur in some vehicles, or to provide information that could assist in the proper servicing of the vehicle. Properly trained technicians have the equipment, tools, safety instructions, and know-how to do the job correctly and safely. If a condition is described, DO NOT assume that this Service Bulletin applies to your vehicle, or that your vehicle will have that condition.

**Subaru of America, Inc. is ISO 14001 Compliant**

ISO 14001 is the international standard for excellence in Environmental Management Systems. Please recycle or dispose of automotive products in a manner that is friendly to our environment and in accordance with all local, state and federal laws and regulations.

*Continued...*

**Step 2:** Using the DCA-8000, select **Power Supply Mode** and follow the on-screen prompts provided by the DCA-8000.

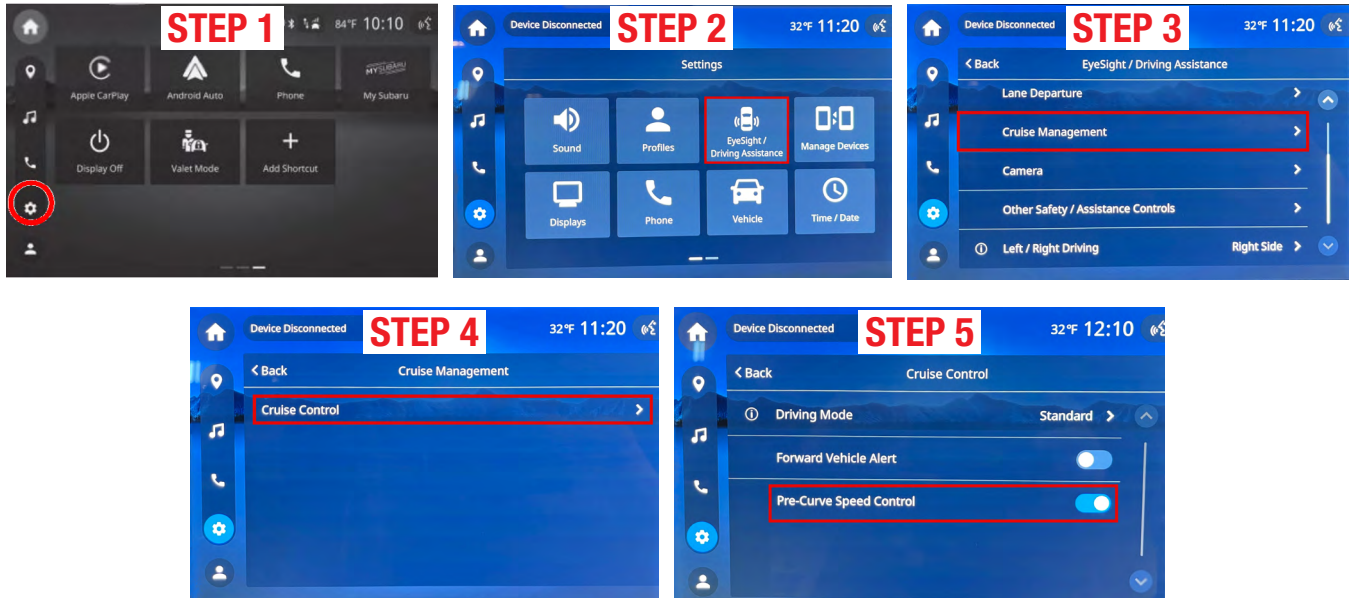
**Step 3:** Using **14-28-21R**, perform the normal reprogramming steps with **SSM5-R**.

**Note:** Two files will display and will be programmed one after the other. No additional actions are required.

**Step 4:** Check Software information and ensure the current CID/ROMID is **19210804460F2108053D**

**Step 5:** Turn the ignition off and on after finishing the reprogramming.

**Step 6:** From the CID select the **Settings(gear icon) > EyeSight/Driving Assistance > Cruise Management > Cruise Control > Pre-Curve Speed Control**



**Step 7:** Repeat Step 1 to confirm that the software update has been completed.

**WARRANTY / CLAIM INFORMATION:**

Reimbursement for completing the EEA-26 Product Enhancement will be based on proper repair documentation and claim submission. Retailers may submit Product Enhancement claims using Claim Type PE through Subaru.net.com. Below is the coding for the EEA-26 Product Enhancement Service Program:

Claim Type	Labor Description	Labor Operation #	Labor Time	Repair Code
PE	Eyesight Reprogramming	A067-786	.7h	EEA-26

**IMPORTANT REMINDERS:**

- SOA strongly discourages the printing and/or local storage of service information as previously released information and electronic publications may be updated at any time.
- Always check for any open recalls or campaigns anytime a vehicle is in for servicing.
- Always refer to STIS for the latest service information before performing any repairs.