

# Error Generates When SSR is Moved into an Engine Brake Position 1, 2, 3

## COMMUNICATION:

FIELD SOLUTION: TSB 26-058 FTL and 26-009 WST

PUBLISH DATE: 9/15/2025

## TOPIC BACKGROUND:

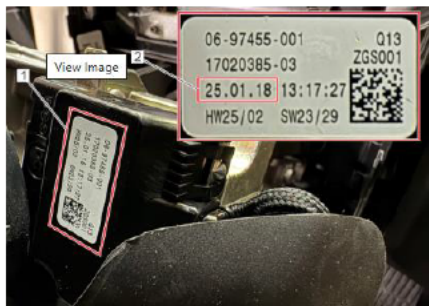
### PRIMARY EFFECT:

- A select range of right-hand stalk switches may have internal damage, causing a consistent fault where the engine brake fails to activate and a fault code is generated when the lever is moved to the engine brake positions, which becomes inactive when moved to the OFF position.

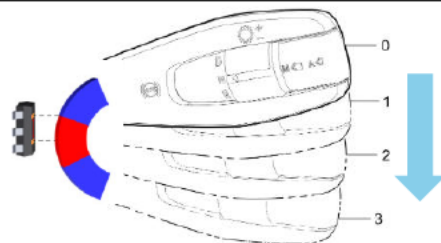
### AFFECTED MODELS:

- Stalk switches that are built Jan 1, 2024 – August 31, 2024.
- These dates do not correlate to Truck build date

## VISUALIZATION:



Engine Brake	Right Stalk Switch Position	Display Status
OFF	ON	Neutral
OFF	level 0	ON
OFF	ON	Neutral
OFF	error	ON
OFF	ON	Neutral
OFF	error	ON
OFF	ON	Neutral
OFF	error	ON



## PROGRESS UPDATES:

- BCS change over 1/27/2025
- TSB published 9/15/2025
- Topic closure requested Q1 2026

## TOPIC RESOLUTION INFORMATION:

### PRODUCTION CHANGEOVER WEEK/MONTH:

- January 27, 2025
- BCS (stalk switch supplier) uses a Hall effect sensor in place of a microswitch

### RESOLUTION:

- TSB 26-058 FTL and 26-009 WST published to aid the diagnosis of a failed microswitch to prevent diagnostics that could lead to replacing the CPC and other components.
- Current troubleshooting does not lead technicians to diagnosing the stalk switch for this symptom which can result in CPC replacement that will not correct the issue and substantially increase the cost of repair.