



Technical Service Bulletin

GROUP ENGINE MECHANICAL	NUMBER 26-01-033H
DATE MARCH 2026	MODEL(S) SEE BELOW

SUBJECT: OP CODE/PART NUMBER
(REFERENCE GUIDE FOR SERVICE CAMPAIGN T6G)

This TSB supersedes 22-01-024H-2 to add corresponding Op codes for 2019-2021MY Tucson (TL) vehicles pertaining to Reman engine 21101-2EG18FFHRM on pages 11-12, and revise the 'Information' box on page 1 to refer to the latest Hyundai Policy & Procedures when ordering an engine.

*** IMPORTANT**

This field action requires both a reported condition consistent with the symptoms outlined in TSB 22-01-023H-2 and dealer confirmation of those symptoms before any repair work is performed.

Description: This TSB references the Op codes to use for claim submission and the Parts required based on the vehicle's inspection results from TSB 22-01-023H-2 (DTC P1326 – Engine Bearing Inspection/Engine Replacement) or the latest version.

i Information

Consult the latest Hyundai Warranty Policy and Procedures when ordering an engine.

Applicable Vehicles:

Model Year	Model	Engine
2010 – 2012	Santa Fe (CM)	Theta II 2.4L MPI
2010 – 2013	Tucson (LM)	
2011 – 2015	Sonata Hybrid (YF HEV)	Theta II 2.4L MPI Atkinson
2014 – 2015	Tucson (LM)	Nu 2.0L GDI
2014	Elantra Coupe (JK)	
2014 – 2016	Elantra (MD)	
2014 – 2017	Elantra GT (GD)	
2018 – 2020	Elantra GT (PD)	
2016 – 2021	Tucson (TL)	
2016 – 2019	Sonata Hybrid Plug-in (LF HEV/PHEV)	
2012 – 2017	Veloster (FS)	Gamma 1.6L GDI

Warranty Information:**Note 1: Claim Submission -**

- One (1) claim for inspection.
- One (1) claim for replacement of engine/knock sensor, as needed.
- Additional claims, as needed:
 - If a part is in need of replacement and the **malfunction is directly caused by Campaign T6G** related engine failure, OR if additional labor is required while performing Campaign T6G:
 - ❖ Submit one compiled separate claim using the same repair order number AND,
 - ❖ Submit with 21101NTT using the engine causal part number associated with the T6G OP Code AND,
 - ❖ Ensure part replacement and punch times are accurate and that they match the labor performed along with the service manager's signature approving the TT time.
 - For TT time best practices, refer to **Hyundaidealer.com > Service Tab > Documents Library > Warranty > ATT-NTT Documentation and Claim Submission Guide.**
 - ❖ Note: If the part replacement does not require additional labor, follow the above steps and use the system minimum of .00 labor time with a quantity of 1.
 - If a part is found in need of replacement while performing this campaign and the affected part (**malfunction not directly caused by Campaign T6G**) is still under warranty, submit a separate claim using the same repair order. If the affected part(s) are out of warranty, submit a Prior Approval (PA) request for goodwill consideration prior to performing the work.

Note 2: PA Approval ONLY required for Op Codes with engine replacement.

- Op codes for engine replacement must only be used if engine replacement is deemed necessary by the service procedure in **T6G TSB 22-01-023H-2 (or the latest version)**.

Note 3: Seized Cases -

- **2010-12MY Santa Fe (CM) 2.4L & 2010-13MY Tucson 2.4L engines ONLY:**
 - There are specific replacement Op codes for seized cases due to engine replacement from the front. These have '(SEIZED)' in their description.
 - An additional 1.2 M/H has been given for these specific models/model years due to additional labor needed to remove both engine AND transmission on seized cases.
 - All other models listed on the TSB have engine replacement from the bottom (regular pull down method).
- **2016MY Sonata Hybrid/Plug-in (LF HEV/PHEV)**
 - Certain vehicles produced before 04/01/2015 may require the replacement of the Hybrid Starter Generator (HSG), part number 373902E930-SJ, if the newly installed long block engine is not compatible with the existing HSG. This may be claimed under 'NTT'. Please refer to **TSB 22-01-023H-2 (or the latest version)** for more information.

Note 4: Campaign 966 Claim Submission -

- Campaign 966 Engine ECM update is **only required if new software is available.**

- Please submit a separate campaign claim for the ECM update using Campaign 966 Op Codes. These particular Op codes are identified in the replacement op code tables below **with an asterisk (*)**.

A summary of the updated T6G claim submission process can also be accessed via the following:

- **Link (hover over):** [Claims Submission](#)
- **QR Code:**



Table of Contents

• Inspection Table for ALL Vehicles	4
• Replacement Op Code Tables.....	5
• 1. 2010-2012MY Santa Fe (CM) 2.4L, FWD.....	5
• 2. 2010-12MY Santa Fe (CM) 2.4L, AWD.....	5
• 3. 2010-13MY Tucson (LM) 2.4L, FWD	6
• 4. 2010-13MY Tucson (LM) 2.4L, AWD	6
• 5. 2011-15MY Sonata Hybrid (YF HEV) 2.4L	7
• 6. 2014-15MY Tucson (LM) 2.0L, FWD	7
• 7. 2014-15MY Tucson (LM) 2.0L, AWD	8
• 8. 2014MY Elantra Coupe (JK) & 2014-16MY Elantra (MD) 2.0L.....	8
• 9. 2014-17MY Elantra GT (GD) 2.0L	9
• 10. 2018-20MY Elantra GT (PD) 2.0L.....	9
• 11. 2016-18MY Tucson (TL) 2.0L, FWD	10
• 12. 2016-18MY Tucson (TL) 2.0L, AWD.....	10
• 13. 2012-17MY Veloster (FS) 1.6L	11
• 14. 2019-21MY Tucson (TL) 2.0L, FWD.....	11
• 15. 2019-21MY Tucson (TL) 2.0L, AWD.....	12
• 16. 2016-19MY Sonata Hybrid/Plug-in (LF HEV/PHEV) 2.0L.....	12

Inspection Table for ALL Vehicles

MY/Model/ Engine	Description	Op Code	Op Time
All	EXTERNAL DAMAGE (NO) + OIL DIPSTICK (NO) + OIL DRAIN ≥ 1.5QT (NO) + SUBMIT PA OR EXTERNAL DAMAGE (YES) + SUBMIT PA	10D02210	0.3 M/H
	(SEIZED): EXTERNAL DAMAGE (NO) + OIL DIPSTICK (NO) + OIL DRAIN ≥ 1.5QT (YES) + CRANK ROTATION (NO) + SUBMIT PA	10D02211	0.5 M/H
	EXTERNAL DAMAGE (NO) + OIL DIPSTICK (NO) + OIL DRAIN ≥ 1. 5QT (YES) + CRANK ROTATION (YES) + BCT RESULT (NO PASS)	10D02212	1.4 M/H
	EXTERNAL DAMAGE (NO) + OIL DIPSTICK (NO) + OIL DRAIN ≥ 1. 5QT (YES) + CRANK ROTATION (YES) + BCT RESULT (PASS)	10D02213	1.1 M/H
	EXTERNAL DAMAGE (NO) + OIL DIPSTICK (NO) + OIL DRAIN ≥ 1. 5QT (YES) + CRANK ROTATION (YES) + BCT RESULT (NO BCT)	10D02214	1.7 M/H
	EXTERNAL DAMAGE (NO) + OIL DIPSTICK (YES) + CRANK ROTATION (YES) + BCT RESULT (NO PASS)	10D02215	1.1 M/H
	EXTERNAL DAMAGE (NO) + OIL DIPSTICK (YES) + CRANK ROTATION (YES) + BCT RESULT (PASS)	10D02216	0.8 M/H
	EXTERNAL DAMAGE (NO) + OIL DIPSTICK (YES) + CRANK ROTATION (YES) + BCT RESULT (NO BCT)	10D02217	1.4 M/H
	(SEIZED): EXTERNAL DAMAGE (NO) + OIL DIPSTICK (YES) + CRANK ROTATION (NO) + SUBMIT PA	10D02218	0.2 M/H

Replacement Op Code Tables

Replacement tables are by Model/Model Year/Drive Train (FWD,AWD).

1. 2010-2012MY Santa Fe (CM) 2.4L, FWD

Description	Op Code	Op Time	Engine	Svc Kit 1	Knock Sensor
Replace Engine (OE) + New ECM S/W Available (NO)	10D223AA	4.8 M/H	21101-2G404FFF	21111-2G4S2FFF	N/A
Replace Engine (OE) + New ECM S/W Available (YES) + ECM Update (YES)*	10D223AB	4.7 M/H	21101-2G404FFF	21111-2G4S2FFF	N/A
Abnormal Engine Noise (NO) + Replace Knock Sensor + ECM Update (NO)	10D223AE	0.6 M/H	N/A	N/A	39250-2G100
Abnormal Engine Noise (YES) + Refer to HTSS (YES)/Submit PA + ECM Update (NO)	10D223AF	0.6 M/H	N/A	N/A	N/A
Abnormal Engine Noise (YES) + Refer to HTSS (YES)/Submit PA + ECM Update (YES)*	10D223AG	0.5 M/H	N/A	N/A	N/A
Abnormal Engine Noise (YES) + Refer to HTSS (YES)/Submit PA + Replace Engine (OE) + New ECM S/W Available (NO)	10D223AH	5.4 M/H	21101-2G404FFF	21111-2G4S2FFF	N/A
Abnormal Engine Noise (YES) + Refer to HTSS (YES)/Submit PA + Replace Engine (OE) + New ECM S/W Available (YES) + ECM Update (YES)*	10D223AI	5.3 M/H	21101-2G404FFF	21111-2G4S2FFF	N/A
Crank Rotation (NO) + Submit PA + Replace Engine (OE) + New ECM S/W Available (NO) (SEIZED)	10D223AL	6.0 M/H	21101-2G404FFF	21111-2G4S2FFF	N/A
Crank Rotation (NO) + Submit PA + Replace Engine (OE) + New ECM S/W Available (YES) + ECM Update (YES)* (SEIZED)	10D223AM	5.9 M/H	21101-2G404FFF	21111-2G4S2FFF	N/A

*Please submit an additional campaign claim under Campaign 966 for performing software update if new software is available.

2. 2010-12MY Santa Fe (CM) 2.4L, AWD

Description	Op Code	Op Time	Engine	Svc Kit 1	Knock Sensor
Replace Engine (OE) + New ECM S/W Available (NO)	10D223BA	5.2 M/H	21101-2G404FFF	21111-2G4S2FFF	N/A
Replace Engine (OE) + New ECM S/W Available (YES) + ECM Update (YES)*	10D223BB	5.1 M/H	21101-2G404FFF	21111-2G4S2FFF	N/A
Abnormal Engine Noise (NO) + Replace Knock Sensor + ECM Update (NO)	10D223BE	0.6 M/H	N/A	N/A	39250-2G100
Abnormal Engine Noise (YES) + Refer to HTSS (YES)/Submit PA + ECM Update (NO)	10D223BF	0.6 M/H	N/A	N/A	N/A
Abnormal Engine Noise (YES) + Refer to HTSS (YES)/Submit PA + ECM Update (YES)*	10D223BG	0.5 M/H	N/A	N/A	N/A
Abnormal Engine Noise (YES) + Refer to HTSS (YES)/Submit PA + Replace Engine (OE) + New ECM S/W Available (NO)	10D223BH	5.8 M/H	21101-2G404FFF	21111-2G4S2FFF	N/A
Abnormal Engine Noise (YES) + Refer to HTSS (YES)/Submit PA + Replace Engine (OE) + New ECM S/W Available (YES) + ECM Update (YES)*	10D223BI	5.7 M/H	21101-2G404FFF	21111-2G4S2FFF	N/A
Crank Rotation (NO) + Submit PA + Replace Engine (OE) + New ECM S/W Available (NO) (SEIZED)	10D223BL	6.4 M/H	21101-2G404FFF	21111-2G4S2FFF	N/A
Crank Rotation (NO) + Submit PA + Replace Engine (OE) + New ECM S/W Available (YES)* (SEIZED)	10D223BM	6.3 M/H	21101-2G404FFF	21111-2G4S2FFF	N/A

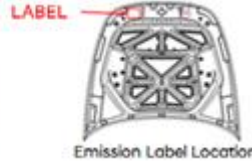
*Please submit an additional campaign claim under Campaign 966 for performing software update if new software is available.

3. 2010-13MY Tucson (LM) 2.4L, FWD

Description	Op Code	Op Time	Engine	Svc Kit 1	Knock Sensor
Replace Engine (OE) + New ECM S/W Available (NO)	10D223CA	4.8 M/H	21101-2G401QQH	21111-2G4S1QQH (ULEV)** 21111-2G4S2FFF (SULEV/PZEV)**	N/A
Replace Engine (OE) + New ECM S/W Available (YES) + ECM Update (YES)*	10D223CB	4.7 M/H	21101-2G401QQH	21111-2G4S1QQH (ULEV)** 21111-2G4S2FFF (SULEV/PZEV)**	N/A
Abnormal Engine Noise (NO) + Replace Knock Sensor + ECM Update (NO)	10D223CE	1.2 M/H	N/A	N/A	39250-2G100
Abnormal Engine Noise (YES) + Refer to HTSS (YES)/Submit PA + ECM Update (NO)	10D223CF	0.6 M/H	N/A	N/A	N/A
Abnormal Engine Noise (YES) + Refer to HTSS (YES)/Submit PA + ECM Update (YES)*	10D223CG	0.5 M/H	N/A	N/A	N/A
Abnormal Engine Noise (YES) + Refer to HTSS (YES)/Submit PA + Replace Engine (OE) + New ECM S/W Available (NO)	10D223CH	5.4 M/H	21101-2G401QQH	21111-2G4S1QQH (ULEV)** 21111-2G4S2FFF (SULEV/PZEV)**	N/A
Abnormal Engine Noise (YES) + Refer to HTSS (YES)/Submit PA + Replace Engine (OE) + New ECM S/W Available (YES) + ECM Update (YES)*	10D223CI	5.3 M/H	21101-2G401QQH	21111-2G4S1QQH (ULEV)** 21111-2G4S2FFF (SULEV/PZEV)**	N/A
Crank Rotation (NO) + Submit PA + Replace Engine (OE) + New ECM S/W Available (NO) (SEIZED)	10D223CL	6.0 M/H	21101-2G401QQH	21111-2G4S1QQH (ULEV)** 21111-2G4S2FFF (SULEV/PZEV)**	N/A
Crank Rotation (NO) + Submit PA + Replace Engine (OE) + New ECM S/W Available (YES)* (SEIZED)	10D223CM	5.9 M/H	21101-2G401QQH	21111-2G4S1QQH (ULEV)** 21111-2G4S2FFF (SULEV/PZEV)**	N/A

*Please submit an additional campaign claim under Campaign 966 for performing software update if new software is available.

**ONLY order 1 service kit - either ULEV or SULEV; Technician may check under the hood if it's a ULEV/SULEV/PZEV vehicle.



4. 2010-13MY Tucson (LM) 2.4L, AWD

Description	Op Code	Op Time	Engine	Svc Kit 1	Knock Sensor
Replace Engine (OE) + New ECM S/W Available (NO)	10D223DA	5.3 M/H	21101-2G401QQH	21111-2G4S1QQH (ULEV)** 21111-2G4S2FFF (SULEV/PZEV)**	N/A
Replace Engine (OE) + New ECM S/W Available (YES) + ECM Update (YES)*	10D223DB	5.2 M/H	21101-2G401QQH	21111-2G4S1QQH (ULEV)** 21111-2G4S2FFF (SULEV/PZEV)**	N/A
Abnormal Engine Noise (NO) + Replace Knock Sensor + ECM Update (NO)	10D223DE	1.2 M/H	N/A	N/A	39250-2G100
Abnormal Engine Noise (YES) + Refer to HTSS (YES)/Submit PA + ECM Update (NO)	10D223DF	0.6 M/H	N/A	N/A	N/A
Abnormal Engine Noise (YES) + Refer to HTSS (YES)/Submit PA + ECM Update (YES)*	10D223DG	0.5 M/H	N/A	N/A	N/A
Abnormal Engine Noise (YES) + Refer to HTSS (YES)/Submit PA + Replace Engine (OE) + New ECM S/W Available (NO)	10D223DH	5.9 M/H	21101-2G401QQH	21111-2G4S1QQH (ULEV)** 21111-2G4S2FFF (SULEV/PZEV)**	N/A
Abnormal Engine Noise (YES) + Refer to HTSS (YES)/Submit PA + Replace Engine (OE) + New ECM S/W Available (YES) + ECM Update (YES)*	10D223DI	5.8 M/H	21101-2G401QQH	21111-2G4S1QQH (ULEV)** 21111-2G4S2FFF (SULEV/PZEV)**	N/A
Crank Rotation (NO) + Submit PA + Replace Engine (OE) + New ECM S/W Available (NO) (SEIZED)	10D223DL	6.5 M/H	21101-2G401QQH	21111-2G4S1QQH (ULEV)** 21111-2G4S2FFF (SULEV/PZEV)**	N/A
Crank Rotation (NO) + Submit PA + Replace Engine (OE) + New ECM S/W Available (YES)* (SEIZED)	10D223DM	6.4 M/H	21101-2G401QQH	21111-2G4S1QQH (ULEV)** 21111-2G4S2FFF (SULEV/PZEV)**	N/A

*Please submit an additional campaign claim under Campaign 966 for performing software update if new software is available.

**ONLY order 1 service kit - either ULEV or SULEV/PZEV. Technician may check under the hood if it's a ULEV/SULEV/PZEV vehicle (see picture above).

SUBJECT:**OP CODE/PART NUMBER
(REFERENCE GUIDE FOR SERVICE CAMPAIGN T6G)****5. 2011-15MY Sonata Hybrid (YF HEV) 2.4L**

Description	Op Code	Op Time	Engine	Svc Kit 1	Knock Sensor
Replace Engine (OE) + New ECM S/W Available (NO)	10D223EA	7.6 M/H	21101-2G406FFF (11-12MY ONLY) 21101-2G407FFF (13-15MY ONLY)	21111-2G4S3FFF	N/A
Replace Engine (OE) + New ECM S/W Available (YES) + ECM Update (YES)*	10D223EB	7.5 M/H	21101-2G406FFF (11-12MY ONLY) 21101-2G407FFF (13-15MY ONLY)	21111-2G4S3FFF	N/A
Abnormal Engine Noise (NO) + Replace Knock Sensor + ECM Update (NO)	10D223EE	0.5 M/H	N/A	N/A	39250-2C500
Abnormal Engine Noise (YES) + Refer to HTSS (YES)/Submit PA + ECM Update (NO)	10D223EF	0.6 M/H	N/A	N/A	N/A
Abnormal Engine Noise (YES) + Refer to HTSS (YES)/Submit PA + ECM Update (YES)*	10D223EG	0.5 M/H	N/A	N/A	N/A
Abnormal Engine Noise (YES) + Refer to HTSS (YES)/Submit PA + Replace Engine (OE) + New ECM S/W Available (NO)	10D223EH	8.2 M/H	21101-2G406FFF (11-12MY ONLY) 21101-2G407FFF (13-15MY ONLY)	21111-2G4S3FFF	N/A
Abnormal Engine Noise (YES) + Refer to HTSS (YES)/Submit PA + Replace Engine (OE) + New ECM S/W Available (YES) + ECM Update (YES)*	10D223EI	8.1 M/H	21101-2G406FFF (11-12MY ONLY) 21101-2G407FFF (13-15MY ONLY)	21111-2G4S3FFF	N/A

*Please submit an additional campaign claim under Campaign 966 for performing software update if new software is available.

6. 2014-15MY Tucson (LM) 2.0L, FWD

Description	Op Code	Op Time	Engine	Svc Kit 1	Fuel Tube	Knock Sensor
Replace Engine (OE) + New ECM S/W Available (NO)	10D223HA	6.1 M/H	21101-2EG05FFF	21111-2EG01FFF	35305-2E510FFF	N/A
Replace Engine (REMAN) + New ECM S/W Available (NO)	10D223HC	6.1 M/H	21101-2EG05FFHRM	21111-2EG01FFF	35305-2E510FFF	N/A
Replace Engine (OE) + New ECM S/W Available (YES) + ECM Update (YES)*	10D223HB	6.0 M/H	21101-2EG05FFF	21111-2EG01FFF	35305-2E510FFF	N/A
Replace Engine (REMAN) + New ECM S/W Available (YES) + ECM Update (YES)*	10D223HD	6.0 M/H	21101-2EG05FFHRM	21111-2EG01FFF	35305-2E510FFF	N/A
Abnormal Engine Noise (NO) + Replace Knock Sensor + ECM Update (NO)	10D223HE	0.9 M/H	N/A	N/A	N/A	39250-2E000
Abnormal Engine Noise (YES) + Refer to HTSS (YES)/Submit PA + ECM Update (NO)	10D223HF	0.6 M/H	N/A	N/A	N/A	N/A
Abnormal Engine Noise (YES) + Refer to HTSS (YES)/Submit PA + ECM Update (YES)*	10D223HG	0.5 M/H	N/A	N/A	N/A	N/A
Abnormal Engine Noise (YES) + Refer to HTSS (YES)/Submit PA + Replace Engine (OE) + New ECM S/W Available (NO)	10D223HH	6.7 M/H	21101-2EG05FFF	21111-2EG01FFF	35305-2E510FFF	N/A
Abnormal Engine Noise (YES) + Refer to HTSS (YES)/Submit PA + Replace Engine (REMAN) + New ECM S/W Available (NO)	10D223HJ	6.7 M/H	21101-2EG05FFHRM	21111-2EG01FFF	35305-2E510FFF	N/A
Abnormal Engine Noise (YES) + Refer to HTSS (YES)/Submit PA + Replace Engine (OE) + New ECM S/W Available (YES) + ECM Update (YES)*	10D223HI	6.6 M/H	21101-2EG05FFF	21111-2EG01FFF	35305-2E510FFF	N/A
Abnormal Engine Noise (YES) + Refer to HTSS (YES)/Submit PA + Replace Engine (REMAN) + New ECM S/W Available (YES) + ECM Update (YES)*	10D223HK	6.6 M/H	21101-2EG05FFHRM	21111-2EG01FFF	35305-2E510FFF	N/A

*Please submit an additional campaign claim under Campaign 966 for performing software update if new software is available.

7. 2014-15MY Tucson (LM) 2.0L, AWD

Description	Op Code	Op Time	Engine	Svc Kit 1	Fuel Tube	Knock Sensor
Replace Engine (OE) + New ECM S/W Available (NO)	10D223IA	6.5 M/H	21101-2EG05FFF	21111-2EG01FFF	35305-2E510FFF	N/A
Replace Engine (REMAN) + New ECM S/W Available (NO)	10D223IC	6.5 M/H	21101-2EG05FFHRM	21111-2EG01FFF	35305-2E510FFF	N/A
Replace Engine (OE) + New ECM S/W Available (YES) + ECM Update (YES)*	10D223IB	6.4 M/H	21101-2EG05FFF	21111-2EG01FFF	35305-2E510FFF	N/A
Replace Engine (REMAN) + New ECM S/W Available (YES) + ECM Update (YES)*	10D223ID	6.4 M/H	21101-2EG05FFHRM	21111-2EG01FFF	35305-2E510FFF	N/A
Abnormal Engine Noise (NO) + Replace Knock Sensor + ECM Update (NO)	10D223IE	0.9 M/H	N/A	N/A	N/A	39250-2E000
Abnormal Engine Noise (YES) + Refer to HTSS (YES)/Submit PA + ECM Update (NO)	10D223IF	0.6 M/H	N/A	N/A	N/A	N/A
Abnormal Engine Noise (YES) + Refer to HTSS (YES)/Submit PA + ECM Update (YES)*	10D223IG	0.5 M/H	N/A	N/A	N/A	N/A
Abnormal Engine Noise (YES) + Refer to HTSS (YES)/Submit PA + Replace Engine (OE) + New ECM S/W Available (NO)	10D223IH	7.1 M/H	21101-2EG05FFF	21111-2EG01FFF	35305-2E510FFF	N/A
Abnormal Engine Noise (YES) + Refer to HTSS (YES)/Submit PA + Replace Engine (REMAN) + New ECM S/W Available (NO)	10D223IJ	7.1 M/H	21101-2EG05FFHRM	21111-2EG01FFF	35305-2E510FFF	N/A
Abnormal Engine Noise (YES) + Refer to HTSS (YES)/Submit PA + Replace Engine (OE) + New ECM S/W Available (YES) + ECM Update (YES)*	10D223II	7.0 M/H	21101-2EG05FFF	21111-2EG01FFF	35305-2E510FFF	N/A
Abnormal Engine Noise (YES) + Refer to HTSS (YES)/Submit PA + Replace Engine (REMAN) + New ECM S/W Available (YES) + ECM Update (YES)*	10D223IK	7.0 M/H	21101-2EG05FFHRM	21111-2EG01FFF	35305-2E510FFF	N/A

*Please submit an additional campaign claim under Campaign 966 for performing software update if new software is available.

8. 2014MY Elantra Coupe (JK) & 2014-16MY Elantra (MD) 2.0L

Description	Op Code	Op Time	Engine	Svc Kit 1	Fuel Tube	Knock Sensor
Replace Engine (OE) + New ECM S/W Available (NO)	10D223JA	6.3 M/H	21101-2EG06FFF	21111-2EG01FFF	35305-2E510FFF	N/A
Replace Engine (REMAN) + New ECM S/W Available (NO)	10D223JC	6.3 M/H	21101-2EG06FFHRM	21111-2EG01FFF	35305-2E510FFF	N/A
Replace Engine (OE) + New ECM S/W Available (YES) + ECM Update (YES)*	10D223JB	6.2 M/H	21101-2EG06FFF	21111-2EG01FFF	35305-2E510FFF	N/A
Replace Engine (REMAN) + New ECM S/W Available (YES) + ECM Update (YES)*	10D223JD	6.2 M/H	21101-2EG06FFHRM	21111-2EG01FFF	35305-2E510FFF	N/A
Abnormal Engine Noise (NO) + Replace Knock Sensor + ECM Update (NO)	10D223JE	0.9 M/H	N/A	N/A	N/A	39250-2E000
Abnormal Engine Noise (YES) + Refer to HTSS (YES)/Submit PA + ECM Update (NO)	10D223JF	0.6 M/H	N/A	N/A	N/A	N/A
Abnormal Engine Noise (YES) + Refer to HTSS (YES)/Submit PA + ECM Update (YES)*	10D223JG	0.5 M/H	N/A	N/A	N/A	N/A
Abnormal Engine Noise (YES) + Refer to HTSS (YES)/Submit PA + Replace Engine (OE) + New ECM S/W Available (NO)	10D223JH	6.9 M/H	21101-2EG06FFF	21111-2EG01FFF	35305-2E510FFF	N/A
Abnormal Engine Noise (YES) + Refer to HTSS (YES)/Submit PA + Replace Engine (REMAN) + New ECM S/W Available (NO)	10D223JJ	6.9 M/H	21101-2EG06FFHRM	21111-2EG01FFF	35305-2E510FFF	N/A
Abnormal Engine Noise (YES) + Refer to HTSS (YES)/Submit PA + Replace Engine (OE) + New ECM S/W Available (YES) + ECM Update (YES)*	10D223JI	6.8 M/H	21101-2EG06FFF	21111-2EG01FFF	35305-2E510FFF	N/A
Abnormal Engine Noise (YES) + Refer to HTSS (YES)/Submit PA + Replace Engine (REMAN) + New ECM S/W Available (YES) + ECM Update (YES)*	10D223JK	6.8 M/H	21101-2EG06FFHRM	21111-2EG01FFF	35305-2E510FFF	N/A

*Please submit an additional campaign claim under Campaign 966 for performing software update if new software is available.

SUBJECT:**OP CODE/PART NUMBER
(REFERENCE GUIDE FOR SERVICE CAMPAIGN T6G)****9. 2014-17MY Elantra GT (GD) 2.0L**

Description	Op Code	Op Time	Engine	Svc Kit 1	Fuel Tube	Knock Sensor
Replace Engine (OE) + New ECM S/W Available (NO)	10D223LA	6.3 M/H	21101-2EG07FFF (14MY ONLY) 21101-2EG06FFF (15-17MY ONLY)	21111-2EG01FFF	35305-2E510FFF	N/A
Replace Engine (REMAN) + New ECM S/W Available (NO)	10D223LC	6.3 M/H	21101-2EG07FFHRM (14MY ONLY) 21101-2EG06FFHRM (15-17MY ONLY)	21111-2EG01FFF	35305-2E510FFF	N/A
Replace Engine (OE) + New ECM S/W Available (YES) + ECM Update (YES)*	10D223LB	6.2 M/H	21101-2EG07FFF (14MY ONLY) 21101-2EG06FFF (15-17MY ONLY)	21111-2EG01FFF	35305-2E510FFF	N/A
Replace Engine (REMAN) + New ECM S/W Available (YES) + ECM Update (YES)*	10D223LD	6.2 M/H	21101-2EG07FFHRM (14MY ONLY) 21101-2EG06FFHRM (15-17MY ONLY)	21111-2EG01FFF	35305-2E510FFF	N/A
Abnormal Engine Noise (NO) + Replace Knock Sensor + ECM Update (NO)	10D223LE	0.9 M/H	N/A	N/A	N/A	39250-2E000
Abnormal Engine Noise (YES) + Refer to HTSS (YES)/Submit PA + ECM Update (NO)	10D223LF	0.6 M/H	N/A	N/A	N/A	N/A
Abnormal Engine Noise (YES) + Refer to HTSS (YES)/Submit PA + ECM Update (YES)*	10D223LG	0.5 M/H	N/A	N/A	N/A	N/A
Abnormal Engine Noise (YES) + Refer to HTSS (YES)/Submit PA + Replace Engine (OE) + New ECM S/W Available (NO)	10D223LH	6.9 M/H	21101-2EG07FFF (14MY ONLY) 21101-2EG06FFF (15-17MY ONLY)	21111-2EG01FFF	35305-2E510FFF	N/A
Abnormal Engine Noise (YES) + Refer to HTSS (YES)/Submit PA + Replace Engine (REMAN) + New ECM S/W Available (NO)	10D223LJ	6.9 M/H	21101-2EG07FFHRM (14MY ONLY) 21101-2EG06FFHRM (15-17MY ONLY)	21111-2EG01FFF	35305-2E510FFF	N/A
Abnormal Engine Noise (YES) + Refer to HTSS (YES)/Submit PA + Replace Engine (OE) + New ECM S/W Available (YES) + ECM Update (YES)*	10D223LI	6.8 M/H	21101-2EG07FFF (14MY ONLY) 21101-2EG06FFF (15-17MY ONLY)	21111-2EG01FFF	35305-2E510FFF	N/A
Abnormal Engine Noise (YES) + Refer to HTSS (YES)/Submit PA + Replace Engine (REMAN) + New ECM S/W Available (YES) + ECM Update (YES)*	10D223LK	6.8 M/H	21101-2EG07FFHRM (14MY ONLY) 2110-12EG06FFHRM (15-17MY ONLY)	21111-2EG01FFF	35305-2E510FFF	N/A

*Please submit an additional campaign claim under Campaign 966 for performing software update if new software is available.

10. 2018-20MY Elantra GT (PD) 2.0L

Description	Op Code	Op Time	Engine	Svc Kit 1	Fuel Tube	Knock Sensor
Replace Engine (OE) + New ECM S/W Available (NO)	10D223KA	6.4 M/H	21101-2EG09FFF	21111-2EG01FFF	35305-2E510FFF	N/A
Replace Engine (OE) + New ECM S/W Available (YES) + ECM Update (YES)*	10D223KB	6.3 M/H	21101-2EG09FFF	21111-2EG01FFF	35305-2E510FFF	N/A
Abnormal Engine Noise (NO) + Replace Knock Sensor + ECM Update (NO)	10D223KE	0.9 M/H	N/A	N/A	N/A	39250-2E000
Abnormal Engine Noise (YES) + Refer to HTSS (YES)/Submit PA + ECM Update (NO)	10D223KF	0.6 M/H	N/A	N/A	N/A	N/A
Abnormal Engine Noise (YES) + Refer to HTSS (YES)/Submit PA + ECM Update (YES)*	10D223KG	0.5 M/H	N/A	N/A	N/A	N/A
Abnormal Engine Noise (YES) + Refer to HTSS (YES)/Submit PA + Replace Engine (OE) + New ECM S/W Available (NO)	10D223KH	7.0 M/H	21101-2EG09FFF	21111-2EG01FFF	35305-2E510FFF	N/A
Abnormal Engine Noise (YES) + Refer to HTSS (YES)/Submit PA + Replace Engine (OE) + New ECM S/W Available (YES) + ECM Update (YES)*	10D223KI	6.9 M/H	21101-2EG09FFF	21111-2EG01FFF	35305-2E510FFF	N/A

*Please submit an additional campaign claim under Campaign 966 for performing software update if new software is available.

11. 2016-18MY Tucson (TL) 2.0L, FWD

Description	Op Code	Op Time	Engine	Svc Kit 1	Fuel Tube	Knock Sensor
Replace Engine (OE) + New ECM S/W Available (NO)	10D223MA	6.1 M/H	21101-2EG08FFF	21111-2EG02FFF	35305-2E510FFF	N/A
Replace Engine (REMAN) + New ECM S/W Available (NO)	10D223MC	6.1 M/H	21101-2EG08FFHRM	21111-2EG02FFF	35305-2E510FFF	N/A
Replace Engine (OE) + New ECM S/W Available (YES) + ECM Update (YES)*	10D223MB	6.0 M/H	21101-2EG08FFF	21111-2EG02FFF	35305-2E510FFF	N/A
Replace Engine (REMAN) + New ECM S/W Available (YES) + ECM Update (YES)*	10D223MD	6.0 M/H	21101-2EG08FFHRM	21111-2EG02FFF	35305-2E510FFF	N/A
Abnormal Engine Noise (NO) + Replace Knock Sensor + ECM Update (NO)	10D223ME	1.0 M/H	N/A	N/A	N/A	39250-2E000
Abnormal Engine Noise (YES) + Refer to HTSS (YES)/Submit PA + ECM Update (NO)	10D223MF	0.6 M/H	N/A	N/A	N/A	N/A
Abnormal Engine Noise (YES) + Refer to HTSS (YES)/Submit PA + ECM Update (YES)*	10D223MG	0.5 M/H	N/A	N/A	N/A	N/A
Abnormal Engine Noise (YES) + Refer to HTSS (YES)/Submit PA + Replace Engine (OE) + New ECM S/W Available (NO)	10D223MH	6.7 M/H	21101-2EG08FFF	21111-2EG02FFF	35305-2E510FFF	N/A
Abnormal Engine Noise (YES) + Refer to HTSS (YES)/Submit Pa + Replace Engine (REMAN) + New ECM S/W Available (NO)	10D223MJ	6.7 M/H	21101-2EG08FFHRM	21111-2EG02FFF	35305-2E510FFF	N/A
Abnormal Engine Noise (YES) + Refer to HTSS (YES)/Submit PA + Replace Engine (OE) + New ECM S/W Available (YES) + ECM Update (YES)*	10D223MI	6.6 M/H	21101-2EG08FFF	21111-2EG02FFF	35305-2E510FFF	N/A
Abnormal Engine Noise (YES) + Refer to HTSS (YES)/Submit PA + Replace Engine (REMAN) + New ECM S/W Available (YES) + ECM Update (YES)*	10D223MK	6.6 M/H	21101-2EG08FFHRM	21111-2EG02FFF	35305-2E510FFF	N/A

*Please submit an additional campaign claim under Campaign 966 for performing software update if new software is available.

12. 2016-18MY Tucson (TL) 2.0L, AWD

Description	Op Code	Op Time	Engine	Svc Kit 1	Fuel Tube	Knock Sensor
Replace Engine (OE) + New ECM S/W Available (NO)	10D223NA	6.5 M/H	21101-2EG08FFF	21111-2EG02FFF	35305-2E510FFF	N/A
Replace Engine (REMAN) + New ECM S/W Available (NO)	10D223NC	6.5 M/H	21101-2EG08FFHRM	21111-2EG02FFF	35305-2E510FFF	N/A
Replace Engine (OE) + New ECM S/W Available (YES) + ECM Update (YES)*	10D223NB	6.4 M/H	21101-2EG08FFF	21111-2EG02FFF	35305-2E510FFF	N/A
Replace Engine (REMAN) + New ECM S/W Available (YES) + ECM Update (YES)*	10D223ND	6.4 M/H	21101-2EG08FFHRM	21111-2EG02FFF	35305-2E510FFF	N/A
Abnormal Engine Noise (NO) + Replace Knock Sensor + ECM Update (NO)	10D223NE	1.0 M/H	N/A	N/A	N/A	392502 E000
Abnormal Engine Noise (YES) + Refer to HTSS (YES)/Submit PA + ECM Update (NO)	10D223NF	0.6 M/H	N/A	N/A	N/A	N/A
Abnormal Engine Noise (YES) + Refer to HTSS (YES)/Submit PA + ECM Update (YES)*	10D223NG	0.5 M/H	N/A	N/A	N/A	N/A
Abnormal Engine Noise (YES) + Refer to HTSS (YES)/Submit PA + Replace Engine (OE) + New ECM S/W Available (NO)	10D223NH	7.1 M/H	21101-2EG08FFF	21111-2EG02FFF	35305-2E510FFF	N/A
Abnormal Engine Noise (YES) + Refer to HTSS (YES)/Submit PA + Replace Engine (REMAN) + New ECM S/W Available (NO)	10D223NJ	7.1 M/H	21101-2EG08FFHRM	21111-2EG02FFF	35305-2E510FFF	N/A
Abnormal Engine Noise (YES) + Refer to HTSS (YES)/Submit PA + Replace Engine (OE) + New ECM S/W Available (YES) + ECM Update (YES)*	10D223NI	7.0 M/H	21101-2EG08FFF	21111-2EG02FFF	35305-2E510FFF	N/A
Abnormal Engine Noise (YES) + Refer to HTSS (YES)/Submit PA + Replace Engine (REMAN) + New ECM S/W Available (YES) + ECM Update (YES)*	10D223NK	7.0 M/H	21101-2EG08FFHRM	21111-2EG02FFF	35305-2E510FFF	N/A

*Please submit an additional campaign claim under Campaign 966 for performing software update if new software is available.

13. 2012-17MY Veloster (FS) 1.6L

Description	Op Code	Op Time	Engine	Svc Kit 1	Svc Kit 2	Fuel Tube	Knock Sensor
Replace Engine (OE) + New ECM S/W Available (NO)	10D223OA	6.4 M/H	21101-2BK04FFF (NON-DCT) 21101-2BK05FFF (DCT)	21111-2BS01FFF	21112-2BS02FFF	35305-2B000FFF	N/A
Replace Engine (REMAN) + New ECM S/W Available (NO)	10D223OC	6.4 M/H	21101-2BK04FFHRM (NON-DCT) 21101-2BK05FFHRM (DCT)	21111-2BS01FFF	21112-2BS02FFF	35305-2B000FFF	N/A
Replace Engine (OE) + New ECM S/W Available (YES) + ECM Update (YES)*	10D223OB	6.3 M/H	21101-2BK04FFF (NON-DCT) 21101-2BK05FFF (DCT)	21111-2BS01FFF	21112-2BS02FFF	35305-2B000FFF	N/A
Replace Engine (REMAN) + New ECM S/W Available (YES) + ECM Update (YES)*	10D223OD	6.3 M/H	21101-2BK04FFHRM(NON-DCT) 21101-2BK05FFHRM (DCT)	21111-2BS01FFF	21112-2BS02FFF	35305-2B000FFF	N/A
Abnormal Engine Noise (NO) + Replace Knock Sensor + ECM Update (NO)	10D223OE	0.4 M/H	N/A	N/A	N/A	N/A	39250-2B000
Abnormal Engine Noise (YES) + Refer to HTSS (YES)/Submit PA + ECM Update (NO)	10D223OF	0.6 M/H	N/A	N/A	N/A	N/A	N/A
Abnormal Engine Noise (YES) + Refer to HTSS (YES)/Submit PA + ECM Update (YES)*	10D223OG	0.5 M/H	N/A	N/A	N/A	N/A	N/A
Abnormal Engine Noise (YES) + Refer to HTSS (YES)/Submit PA + Replace Engine (OE) + New ECM S/W Available (NO)	10D223OH	7.0 M/H	21101-2BK04FFF (NON-DCT) 21101-2BK05FFF (DCT)	21111-2BS01FFF	21112-2BS02FFF	35305-2B000FFF	N/A
Abnormal Engine Noise (YES) + Refer to HTSS (YES)/Submit PA + Replace Engine (REMAN) + New ECM S/W Available (NO)	10D223OJ	7.0 M/H	21101-2BK04FFHRM (NON-DCT) 21101-2BK05FFHRM (DCT)	21111-2BS01FFF	21112-2BS02FFF	35305-2B000FFF	N/A
Abnormal Engine Noise (YES) + Refer to HTSS (YES)Submit PA + Replace Engine (OE) + New ECM S/W Available (YES) + ECM Update (YES)*	10D223OI	6.9 M/H	21101-2BK04FFF (NON-DCT) 21101-2BK05FFF (DCT)	21111-2BS01FFF	21112-2BS02FFF	35305-2B000FFF	N/A

*Please submit an additional campaign claim under Campaign 966 for performing software update if new software is available.

14. 2019-21MY Tucson (TL) 2.0L, FWD

Description	Op Code	Op Time	Engine	Svc Kit 1	Fuel Tube	Knock Sensor
Replace Engine (OE) + New ECM S/W Available (NO)	10D223MA	6.1 M/H	21101-2EG18FFF	21111-2EG02FFF	35305-2E510FFF	N/A
Replace Engine (REMAN) + New ECM S/W Available (NO)	10D223MC	6.1 M/H	21101-2EG18FFHRM	21111-2EG02FFF	35305-2E510FFF	N/A
Replace Engine (OE) + New ECM S/W Available (YES) + ECM Update (YES)*	10D223MB	6.0 M/H	21101-2EG18FFF	21111-2EG02FFF	35305-2E510FFF	N/A
Replace Engine (REMAN) + New ECM S/W Available (YES) + ECM Update (YES)*	10D223MD	6.0 M/H	21101-2EG18FFHRM	21111-2EG02FFF	35305-2E510FFF	N/A
Abnormal Engine Noise (NO) + Replace Knock Sensor + ECM Update (NO)	10D223ME	1.0 M/H	N/A	N/A	N/A	39250-2E000
Abnormal Engine Noise (YES) + Refer to HTSS (YES)/Submit PA + ECM Update (NO)	10D223MF	0.6 M/H	N/A	N/A	N/A	N/A
Abnormal Engine Noise (YES) + Refer to HTSS (YES)/Submit PA + ECM Update (YES)*	10D223MG	0.5 M/H	N/A	N/A	N/A	N/A
Abnormal Engine Noise (YES) + Refer to HTSS (YES)/Submit PA + Replace Engine (OE) + New ECM S/W Available (NO)	10D223MH	6.7 M/H	21101-2EG18FFF	21111-2EG02FFF	35305-2E510FFF	N/A
Abnormal Engine Noise (YES) + Refer to HTSS (YES)/Submit PA + Replace Engine (REMAN) + New ECM S/W Available (NO)	10D223MJ	6.7 M/H	21101-2EG18FFHRM	21111-2EG02FFF	35305-2E510FFF	N/A
Abnormal Engine Noise (YES) + Refer to HTSS (YES)/Submit PA + Replace Engine (OE) + New ECM S/W Available (YES) + ECM Update (YES)*	10D223MI	6.6 M/H	21101-2EG18FFF	21111-2EG02FFF	35305-2E510FFF	N/A
Abnormal Engine Noise (YES) + Refer to HTSS (YES)/Submit PA + Replace Engine (REMAN) + New ECM S/W Available (YES) + ECM Update (YES)*	10D223MK	6.6 M/H	21101-2EG18FFHRM	21111-2EG02FFF	35305-2E510FFF	N/A

*Please submit an additional campaign claim under Campaign 966 for performing software update if new software is available.

SUBJECT:**OP CODE/PART NUMBER
(REFERENCE GUIDE FOR SERVICE CAMPAIGN T6G)****15. 2019-21MY Tucson (TL) 2.0L, AWD**

Description	Op Code	Op Time	Engine	Svc Kit 1	Fuel Tube	Knock Sensor
Replace Engine (OE) + New ECM S/W Available (NO)	10D223NA	6.5 M/H	21101-2EG18FFF	21111-2EG02FFF	35305-2E510FFF	N/A
Replace Engine (REMAN) + New ECM S/W Available (NO)	10D223NC	6.5 M/H	21101-2EG18FFHRM	21111-2EG02FFF	35305-2E510FFF	N/A
Replace Engine (OE) + New ECM S/W Available (YES) + ECM Update (YES)*	10D223NB	6.4 M/H	21101-2EG18FFF	21111-2EG02FFF	35305-2E510FFF	N/A
Replace Engine (REMAN) + New ECM S/W Available (YES) + ECM Update (YES)*	10D223ND	6.4 M/H	21101-2EG18FFHRM	21111-2EG02FFF	35305-2E510FFF	N/A
Abnormal Engine Noise (NO) + Replace Knock Sensor + ECM Update (NO)	10D223NE	1.0 M/H	N/A	N/A	N/A	39250-2E000
Abnormal Engine Noise (YES) + Refer to HTSS (YES)/Submit PA + ECM Update (NO)	10D223NF	0.6 M/H	N/A	N/A	N/A	N/A
Abnormal Engine Noise (YES) + Refer to HTSS (YES)/Submit PA + ECM Update (YES)*	10D223NG	0.5 M/H	N/A	N/A	N/A	N/A
Abnormal Engine Noise (YES) + Refer to HTSS (YES)/Submit PA + Replace Engine (OE) + New ECM S/W Available (NO)	10D223NH	7.1 M/H	21101-2EG18FFF	21111-2EG02FFF	35305-2E510FFF	N/A
Abnormal Engine Noise (YES) + Refer to HTSS (YES)/Submit PA + Replace Engine (REMAN) + New ECM S/W Available (NO)	10D223NJ	7.1 M/H	21101-2EG18FFHRM	21111-2EG02FFF	35305-2E510FFF	N/A
Abnormal Engine Noise (YES) + Refer to HTSS (YES)/Submit PA + Replace Engine (OE) + New ECM S/W Available (YES) + ECM Update (YES)*	10D223NI	7.0 M/H	21101-2EG18FFF	21111-2EG02FFF	35305-2E510FFF	N/A
Abnormal Engine Noise (YES) + Refer to HTSS (YES)/Submit PA + Replace Engine (REMAN) + New ECM S/W Available (YES) + ECM Update (YES)*	10D223NK	7.0 M/H	21101-2EG18FFHRM	21111-2EG02FFF	35305-2E510FFF	N/A

*Please submit an additional campaign claim under Campaign 966 for performing software update if new software is available.

16. 2016-19MY Sonata Hybrid/Plug-in (LF HEV/PHEV) 2.0L

Description	Op Code	Op Time	Engine	Svc Kit 1	Fuel Tube	Knock Sensor
Replace Engine (OE) + New ECM S/W Available (NO)	10D223FA	7.6 M/H	21101-2EG15FFF	21111-2EGA3FFF	35305-2E600FFF	N/A
Replace Engine (OE) + New ECM S/W Available (YES) + ECM Update (YES)*	10D223FB	7.5 M/H	21101-2EG15FFF	21111-2EGA3FFF	35305-2E600FFF	N/A
Abnormal Engine Noise (NO) + Replace Knock Sensor + ECM Update (NO)	10D223FE	1.0 M/H	N/A	N/A	N/A	39250-2E000
Abnormal Engine Noise (YES) + Refer to HTSS (YES)/Submit PA + ECM Update (NO)	10D223FF	0.6 M/H	N/A	N/A	N/A	N/A
Abnormal Engine Noise (YES) + Refer to HTSS (YES)/Submit PA + ECM Update (YES)*	10D223FG	0.5 M/H	N/A	N/A	N/A	N/A
Abnormal Engine Noise (YES) + Refer to HTSS (YES)/Submit PA + Replace Engine (OE) + New ECM S/W Available (NO)	10D223FH	8.2 M/H	21101-2EG15FFF	21111-2EGA3FFF	35305-2E600FFF	N/A
Abnormal Engine Noise (YES) + Refer to HTSS (YES)/Submit PA + Replace Engine (OE) + New ECM S/W Available (YES) + ECM Update (YES)*	10D223FI	8.1 M/H	21101-2EG15FFF	21111-2EGA3FFF	35305-2E600FFF	N/A

*Please submit an additional campaign claim under Campaign 966 for performing software update if new software is available.

NOTE: If the HSG needed replacement as part of the repair, please refer to Note 3 on page 2 for directions on how to claim the HSG.