

Transmission Shift Stalk

TSB-26-058-FTL

Creation Date: 2025-09-15

Engine or Vehicle Affected:

- ▶ New Cascadia
- ▶ Business Class M2-Plus
- ▶ 108SD Plus/114SD Plus

Described Condition

A select range of right-hand stalk switches may have internal damage, causing a consistent fault where the engine brake fails to activate and a fault code is generated when the lever is moved to the engine brake positions, which becomes inactive when moved to the OFF position..

Use the steps below to diagnose this issue more quickly. If the inspection steps do not produce the expected results, then stop using this process and see the previously published diagnostic information based on the complaint.

Parts Details

The switch part numbers that could be affected by this issue are listed in Table 1. A part failure is determined based on the symptoms and the build date.

Table 1, Parts Table

Affected Part Numbers	Part Description
06-87751-XXX	CONTROL-SHIFTER W ENG BRAKE
06-91500-XXX	SWITCH-ENGINE BRAKE,COL MTD

Table 1, Parts Table

Procedure

- Park the vehicle on a level surface, shut down the engine, and set the parking brake. Chock the tires.
- Confirm the right-hand shift stalk is swept all the way counterclockwise, ensuring the engine brake is OFF. For detailed information on the engine brake operation, see the applicable drivers manual.
- Connect the vehicle to DiagnosticLink®.
- Turn the keyswitch to the ON position.
- Expand the Computer Programming Control (CPC) dropdown and open the 'Right Stalk Switch Position' panel.
- Sweep the shift stalk clockwise to each brake position and inspect the engine brake level reading. Stalk switches experiencing this issue display 'error' in place of an engine brake level (1 to 3). See Fig. 1.



04/24/2025

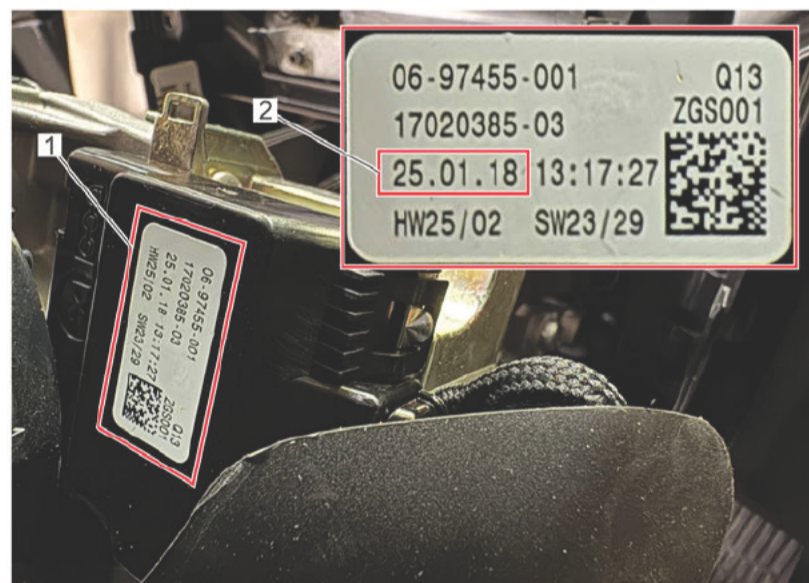
f261601

Fig. 1, Shift Stalk Position Panel on DiagnosticLink

7. Check for the fault code '0/521006/14 Shift Stalk Lever Position - Not Plausible' in the DiagnosticLink fault code log.

- a. If the fault code is found active, then remove the steering column covers. For detailed instructions, see **Group 46** of the applicable workshop manual.

8. Inspect the manufacturer's label on the right-hand stalk switch, and verify if the build date is within the affected range from January 1, 2024 (24.01.01), through August 31, 2024 (24.08.31). See Fig. 2.



04/24/2025

f261602

1. Manufacturer's Label on the Stalk Switch

2. Build Date - January 18, 2025, Clarify this build date is not included in the population

Fig. 2, Manufacturer's Label

9. If the part number, symptoms, and date code criteria are met, then replace the part. If not, use the previously published diagnostic information based on the complaint to continue investigating.

Warranty

If the described condition occurs, then the standard warranty applies.

Note:

027-033-051

REMOVE

INSTALL

REPLACE

INSPECT

ASSEMBLE

DISASSEMBLE

Document Number: 0000161441

Topic Publication Date: 2026-03-13