



INSTRUCTION TO SERVICE

ITS- 61591		03/06/2026
SECTION:	209 - Steering	
SUBJECT:	Steering column shaft collar pinch bolt installation concerns	
ISSUE:	Steering column shaft collar pinch bolt not installed to print.	
CORRECTIVE ACTION:	Inspect steering column shaft collar pinch bolts to ensure installed to print. Rework affected column shaft collar pinch bolts per instructions below.	

ITS-61591

Ref. NHTSA Recall No.	Ref. Transport Canada Recall No.
Not Applicable	Not Applicable

THIS ITS DOCUMENT SHOULD BE RETAINED AND REFERRED TO FOR FUTURE MAINTENANCE UNTIL THE NEW FLYER PARTS AND/OR SERVICE MANUAL IS UPDATED TO REFLECT WORK DONE AS A RESULT OF THIS DOCUMENT. ENSURE THAT THIS DOCUMENT IS AVAILABLE FOR PARTS AND MAINTENANCE STAFF GOING FORWARD.

PROCEDURE:

1. Open steering gear box compartment access panel.
2. Inspect upper and lower steering shaft collar (4 locations) to ensure the shaft collar are fully engaged on to the steering shaft. See figure 1 and 2.
3. If steering shaft collars install unacceptable move on to the next steps.
4. Remove steering shaft collar pinch bolt with lock nut and discard.
5. Slide the steering shaft collar onto the steering shaft.

NOTE: If removing the shaft collar from the steering shaft is necessary, mark the splines between the shaft collar and steering shaft to ensure misalignment does not occur.

6. Install new M10 bolt (Item #1) and M10 locknut (Item #2). Ensure the pinch bolt is installed in the groove of the steering shaft. Torque hardware to 36 FT-LBS. Apply torque stripe across the hardware.
7. Close steering gear box compartment access panel.

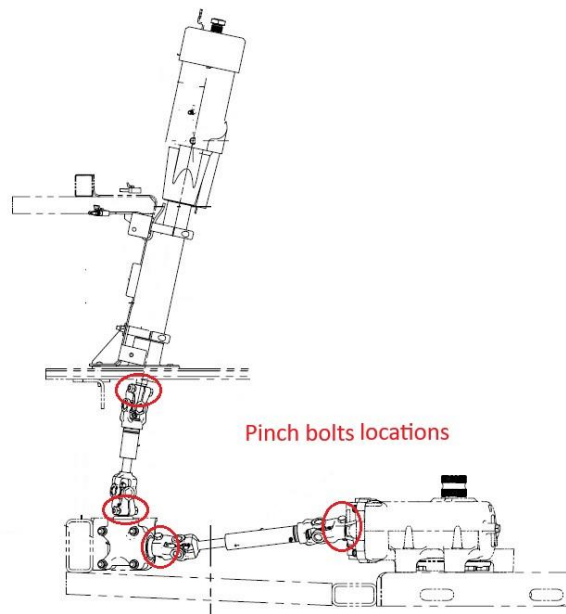


Figure 1: Steering shaft collar location reference.

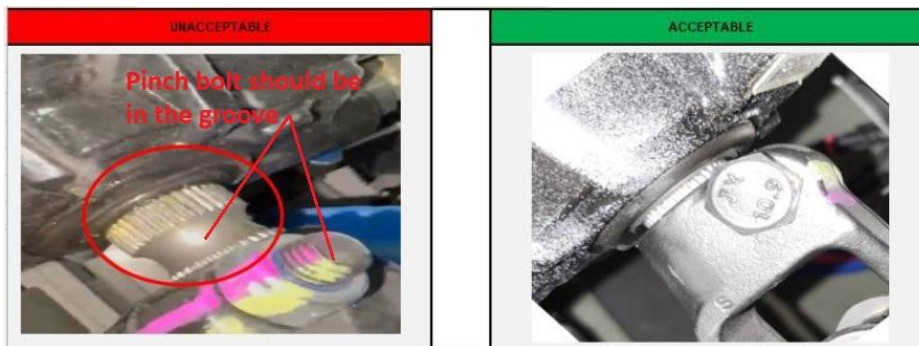


Figure 2: Steering shaft collar “Acceptable, Unacceptable” reference.



LABOUR ESTIMATE				
	Operation	Number of Technician(s)	Hours	Labor Time T X HR
1	Inspect steering column shaft collar pinch bolts	1	0.07	0.07
2	Rework affected column shaft collar pinch bolts	1	0.75	0.75

PARTS REQUIRED					
Item	Part Number	Description	Qty. per Coach	Units	Notes
1	6401795	Bolt, M10 X 1.5 X 50	4	EA	As required
2	6401796	Nut, Nylon Lock M10 X 1.5	4	EA	As required