



## STAR ONLINE PUBLICATION



**Case Number:** S2219000004 Rev. A

**Release Date:** March 2026

**Models Affected:** 2022-2026 Jeep Wagoneer (WS).

**Symptom/Vehicle Issue:** Service Electric Power Steering Message On Cluster.  
C0051-54 Steering Wheel Position Sensor Calibration, C0051-64 Steering Angle Set.

**Discussion:** If Diagnostic Trouble Codes (DTCs) C0051-54 and C0051-64 are both set active at the same time and will not go stored after performing a steering angle calibration routine with wiTECH, alignment of the steering mechanical components should be inspected. Customer may also say the backup camera grid lines are misaligned in relation to steering position.

**<<<Note>>>** This condition may have happened during service work or possibly a minor collision like wheel contact with a curb. A visual symptom of the issue could be the tie rod adjusters exhibit uneven exposed thread count as shown below (Fig 1 and Fig 2). If this exists- continue with the below inspection.

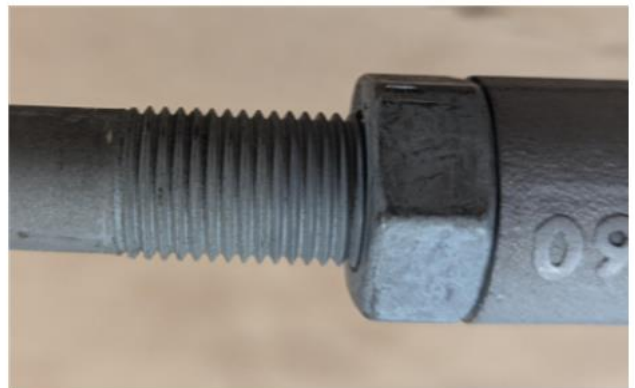


Fig 1 Fig 2.

Left and Right Outer Tie Rod Adjustment Uneven Thread Count.

This document does not authorize warranty repairs. This communication documents a record of past experiences. STAR Online does not provide any conclusions about what is wrong with the vehicle. Rather, it captures all previous cases known that appear to be similar or related to the vehicle symptom / condition. You are the expert, and you are responsible for deciding on the appropriate course of action.

**Contact STAR Center, or your Technical Assistance Center Via TechConnect, eCONTACT or Service Library entry if no solution is found.**



## STAR ONLINE PUBLICATION



Access but do not remove the steering wheel by removing the air bag assembly. Refer to Service Library 19 - Steering / Column / WHEEL, Steering / Removal and Installation.

1. Do the tick marks line up as in Fig 3 and Fig 4?
  - Yes >>> Replace the column referencing Service Library 19 - Steering / Column / Removal and Installation. Proceed to step2
  - No >>> Replace the steering wheel. Refer to 19 - Steering / Column / WHEEL, Steering / Removal and Installation. Proceed to step 2.
2. Once the steering column or steering wheel has been replaced, perform a steering alignment, run steering angle calibration routine and confirm that the DTCs have been resolved. If the condition is not resolved, replace the component not replaced in step 1 (steering wheel or column) and perform step 2 again. Replacement of both components is expected to be extremely rare.



Fig 3

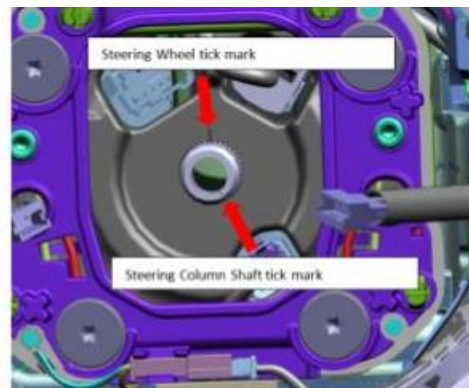


Fig 4

This document does not authorize warranty repairs. This communication documents a record of past experiences. STAR Online does not provide any conclusions about what is wrong with the vehicle. Rather, it captures all previous cases known that appear to be similar or related to the vehicle symptom / condition. You are the expert, and you are responsible for deciding on the appropriate course of action.

**Contact STAR Center, or your Technical Assistance Center Via TechConnect, eCONTACT or Service Library entry if no solution is found.**



## STAR ONLINE PUBLICATION



3. If the tie rod adjusters have a significant visual difference in exposed threads (Fig 1, Fig 2) perform a toe alignment and verify the steering wheel position is straight.
4. Install the driver air bag and any trim removed prior.
5. Test drive the vehicle to confirm customer complaint is resolved.

This document does not authorize warranty repairs. This communication documents a record of past experiences. STAR Online does not provide any conclusions about what is wrong with the vehicle. Rather, it captures all previous cases known that appear to be similar or related to the vehicle symptom / condition. You are the expert, and you are responsible for deciding on the appropriate course of action.

**Contact STAR Center, or your Technical Assistance Center Via TechConnect, eCONTACT or Service Library entry if no solution is found.**