



TECHNICAL SERVICE BULLETIN

Sharp-Angled Contour At The Bottom Rear Edge Of The Front Door(s)

26-2110

16 March
2026

Model:

Ford 2025 Expedition
Lincoln 2025 Navigator

Markets: North American markets only

Issue: Some of the vehicles listed in the Model statement above may exhibit a sharp-angled contour at the bottom rear edge of the front door(s). This bulletin describes the procedure to repair the condition.

Action: For vehicles that meet all of the criteria in the Issue and Model Statements, follow the Service Procedure to round off the sharp-angled edge and touch up the paint on the affected area of the front door(s)

Parts

Service Part Number	Claim Quantity	Description
19500	1	Motorcraft® Touch Up Paint - Refer To The Parts Catalog For The VIN Specific Application
Obtain Locally	As Needed	Scotch-Brite™ Roloc™ Medium Surface Conditioning Disc - 051131-07486
Obtain Locally	As Needed	Paint Preparation Cleaner
Obtain Locally	As Needed	Epoxy Primer

Claim Quantity refers to the total number of individual pieces required to repair the vehicle. This may differ from the number of service part number packages due to the unit of issue (UOI).

As Needed indicates the part is necessary but the amount of the part may vary and/or is not a whole number. Parts can be billed out as non-whole numbers, including less than 1.

Only If Necessary indicates the part is not mandatory. Refer to the Service Procedure to determine the inspection/inclusion criteria.

Warranty Status: Warranty coverage limits and policies are not altered by a TSB. Warranty coverage limits are determined by the identified causal part.

Labor Times

Description	Operation No.	Time
2025 Expedition/Navigator: Inspect Both Front Doors, Print And Install Templates, Remove The Pointed Edge And Apply Touch Up Primer And Paint Following The Service Procedure	262110A	0.6 Hrs

Repair/Claim Coding

Causal Part:	1620124
Condition Code:	91

Service Procedure

1. Open both front doors and inspect for a sharp-angled contour at the bottom rear edge of the front door as shown in Figure 1. Does either front door exhibit a sharp-angled contour as shown in Figure 1?

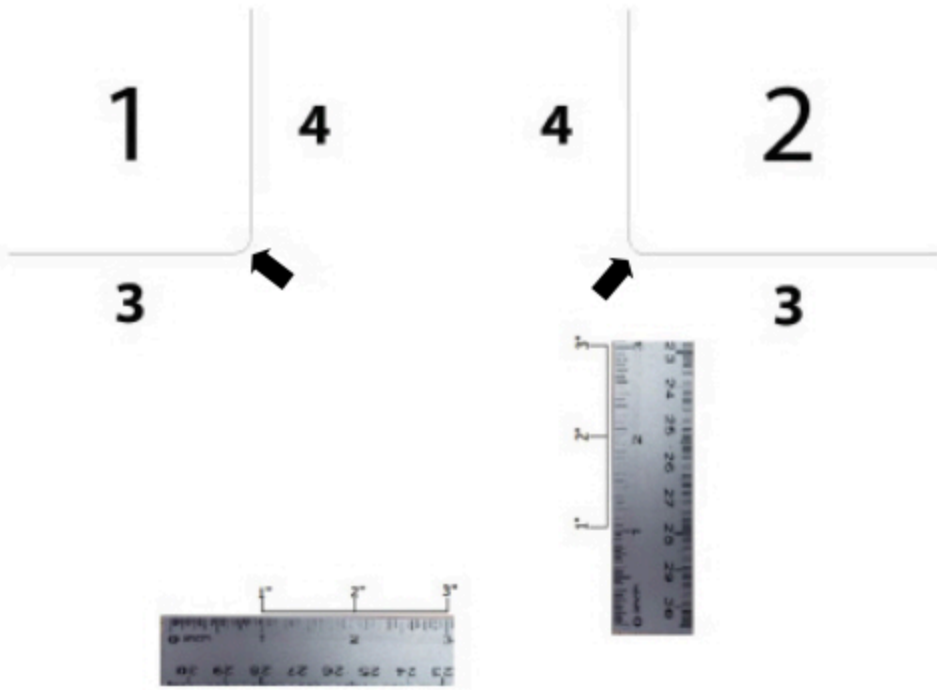
Figure 1



1. Yes - proceed to Step 2.
2. No - this article does not apply.

2. Print a grinding template from the following link:[Grinding Template](#). Verify the horizontal and vertical scale of the image using a ruler against the scale on the grinding template printout (Figure 2) to confirm the image scale is correct. Is the template's scaling correct when compared to the ruler?

Figure 2 - Grinding Template

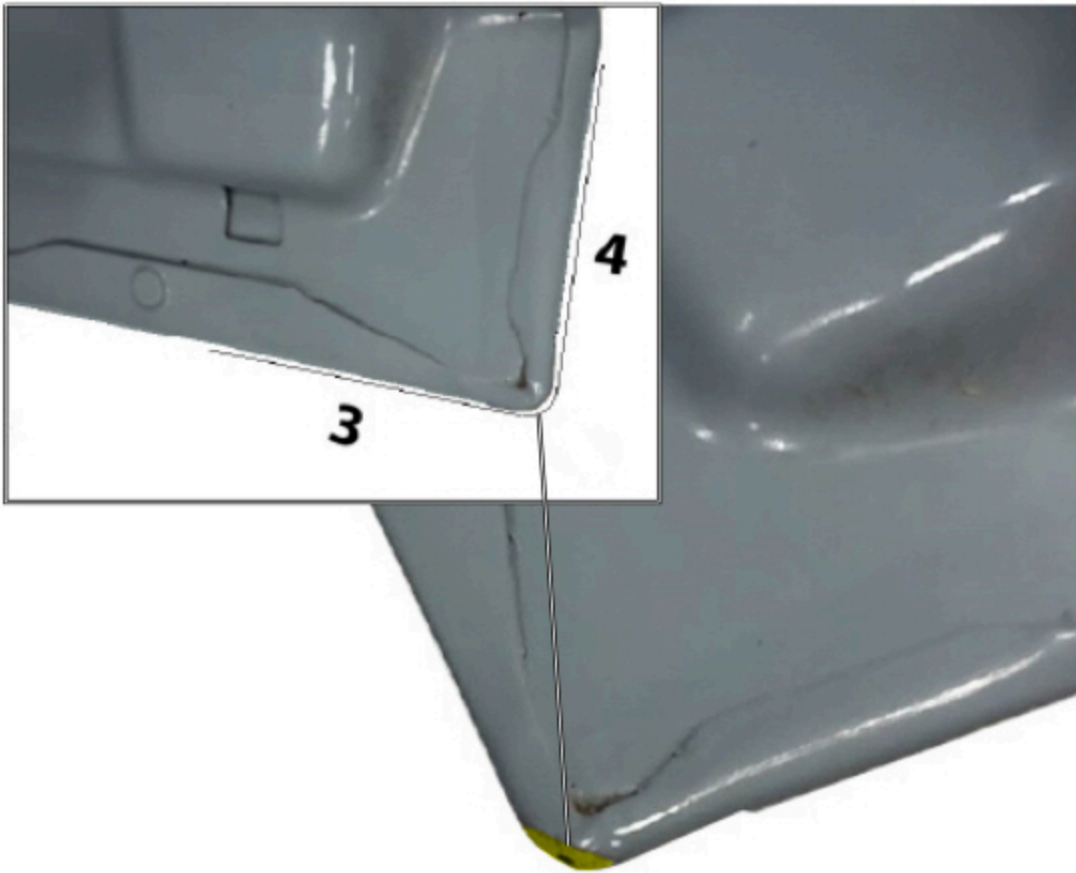


E466469

Item	Description
1	Right front door
2	Left front door
3	Bottom section of the door
4	Outer edge of the door

1. Yes - proceed to Step 3.
2. No - adjust the scale of the printing properties to actual size to resize the image. Repeat step 2.
3. Refer to the following link: [Grinding Video](#) for demonstration. Using an angle grinder with a locally obtained medium Scotch-Brite™ Roloc™ disc, grind down the sharp-angled contour of the front door until a slight rounded edge is present on the bottom corner of the front door skin as shown in Figure 3. Hold the printed template over the bottom corner of the door and grind down the sharp-angled contour until it matches the template.

Figure 3 - Right side front door shown



E466470

Item	Description
3	Bottom section of the door
4	Outer edge of the door

4. Clean the door skin surface using a locally obtained paint preparation cleaner and allow the surface to dry completely.
5. Using a small/fine paint brush, apply a locally obtained epoxy primer to the door skin where the paint was removed. Allow the primer to dry for the required amount of time based on the manufacturer's recommendation.
6. Reference the vehicle's paint code on the door jamb placard and obtain the corresponding Motorcraft™ touch up paint. Using the provided applicator brush, apply one coat of touch up paint over the epoxy primer and allow to dry for 30 minutes.
7. Apply a second coat of touch up paint over the affected area and allow the paint to dry for 30 minutes before closing the door. Repeat these steps on the opposite front door until both front door edges are brought into tolerance using the template as a reference.

© 2026 Ford Motor Company
All rights reserved.

NOTE: The information in Technical Service Bulletins is intended for use by trained, professional technicians with the knowledge, tools, and equipment to do the job properly and safely. It informs these technicians of conditions that may occur on some vehicles, or provides information that could assist in proper vehicle service. The procedures should not be performed by "do-it-yourselfers". Do not assume that a condition

described affects your car or truck. Contact a Ford or Lincoln dealership to determine whether the Bulletin applies to your vehicle. Warranty Policy and Extended Service Plan documentation determine Warranty and/or Extended Service Plan coverage unless stated otherwise in the TSB article. The information in this Technical Service Bulletin (TSB) was current at the time of printing. Ford Motor Company reserves the right to supersede this information with updates. The most recent information is available through Ford Motor Company's on-line technical resources.