

Technical Service Bulletin (TSB)
Power Running Board Trim Paint Peeling

REFERENCE:	TSB: 23-006-26 GROUP: 23 - Body	Date:	March 6, 2026	REVISION:	23-010-25 REV. A
VEHICLES AFFECTED:	2022 - 2024 (WS) Grand Wagoneer/Wagoneer This bulletin applies to vehicles equipped with Power Deployable Running Boards (Sales Code MY7) and Exterior Accents-Piano Black (Sales Code MHY).	MARKET APPLICABILITY: <input checked="" type="checkbox"/> NA <input type="checkbox"/> CH <input type="checkbox"/> EE <input type="checkbox"/> IAP <input type="checkbox"/> SA <input type="checkbox"/> MEA NOTE: This bulletin applies to the North America market.			
CUSTOMER SYMPTOM:	Customers may comment on the following: <ul style="list-style-type: none"> The running board black trim paint is peeling Fig. 1 and Fig. 2. 				
CAUSE:	Material defect				

This bulletin supersedes Technical Service Bulletin (TSB) 23-010-25 REV. A, date of issue August 15, 2025, which should be removed from your files. All revisions are highlighted with ****asterisks**** and include an updated Claims Data table.

This Technical Service Bulletin (TSB) has also been released as a Rapid Service Update (RSU) 25-026, date of issue February 28, 2025.



Fig. 1
Paint Peeling Example

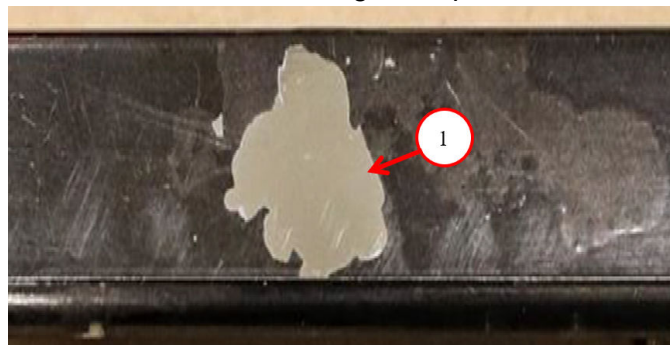


Fig. 2
Paint Peeling Example Close Up

REPAIR SUMMARY:

This bulletin involves painting and replacing one or both power running boards as required.

CLAIMS DATA:

Labor Operation No:	Labor Description	Skill Category	Labor Time
23-09-01-97	Power Running Board - Complete Assembly - Replace One Side (1 - Semi Skilled)	6 - Electrical and Body Systems	0.5 Hrs.
23-09-01-98	Power Running Board - Complete Assembly - Replace Both Sides (1 - Semi Skilled)	6 - Electrical and Body Systems	0.7 Hrs.
23-60-70-50	Paint One Power Running Board **\$83.45 Material Allowance Paint One Power Running Board (Includes Paint Prep)** (1 - Semi Skilled)	6 - Electrical and Body Systems	1.5 Hrs.
23-60-70-51	Paint Two Power Running Board **\$153.10 Material Allowance Paint Two Power Running Boards (Includes Paint Prep)** (1 - Semi Skilled)	6 - Electrical and Body Systems	2.5 Hrs.
Failure Code	ZZ	Service Action	

SPARE PARTS:

Qty	Part No.	Description	Notes
1 (AR)	68614316AA	Step, Power Running Board	Long Wheel Base Right, MY7, MHY
1 (AR)	68614317AA	Step, Power Running Board	Long Wheel Base Left, MY7, MHY
1 (AR)	68602296AA	Step, Power Running Board	Short Wheel Base MY7, Right, MY7, MHY
1 (AR)	68602297AA	Step, Power Running Board	Short Wheel Base MY7, Left, MY7, MHY

DIAGNOSIS:

If the customer describes any of the symptoms listed above in the customer symptom section, perform the Repair Procedure.

REPAIR PROCEDURE:

NOTE: This is not a proactive repair. This Repair Procedure is to only be performed under this RSU if the vehicle exhibits the symptom/conditions listed in this document.

1. Paint the running board(s) as required.
2. Prepare the paint in the ideal proportions according to the manufacturer.

Solvent Basecoat Procedure:

- If using solvent basecoat procedure, paint the repaired area accordingly.
- Refer to the approved refinish paint suppliers (Akzo Nobel, Axalta, BASF, PPG, Sherwin Williams and Valspar) recommended process for cleaning the primed surface area.
- Apply DAS302X sealer or equivalent.
- Apply DBC basecoat with DX57 hardener or equivalent.
- Apply DC4000 clearcoat with SL814 universal flexibilizer or equivalent.

Waterborne Basecoat Procedure:

- If using waterborne basecoat procedure, paint the repaired area accordingly.
 - Refer to the approved refinish paint suppliers (Akzo Nobel, Axalta, BASF, PPG, Sherwin Williams and Valspar) recommended process for cleaning the primed surface area.
 - Apply ECS2X sealer or equivalent.
 - Apply EHP basecoat with T492 and T581 hardener or equivalent.
 - Apply DC4000 clearcoat with SL814 universal flexibilizer or equivalent.
3. Replace the power running board step assembly. Refer to the detailed service procedures listed in DealerCONNECT> Service Library under: 23 - Body / Exterior / Step, Side / Removal and Installation.

POLICY:

Reimbursable within the provisions of the warranty.

This bulletin is supplied as technical information only and is not an authorization for repair. No part of this publication may be reproduced, stored in a retrieval system, or transmitted, in any form or by any means, electronic, mechanical, photocopying, or otherwise, without written permission of FCA US LLC.