

Model series 232, model series 192 wind noises in the area of the mirror triangle on the front doors/side window panes

Topic number	LI67.30-P-080343
Version	1
Function group	67.30 - Side windows
Date	3/11/26
Validity	BR232, BR192
Reason for change	null

Complaint

Wind noises in the area of the mirror triangle on the front doors/side window panes

Cause

Potential causes:

- Adjustment of the side window panes
- Adjustment of the doors
- Influence of seals
- Influence of assembly

Remedy

- If the wind noises only occur on one side: Perform comparison of right/left of the window and door adjustment
- If necessary, correct window and door adjustment according to WIS. For the windows, observe the insertion depth in the Z position and the Y position on the mirror triangle in particular.
- Check inner seal for deformations. To do so, observe attachment 1 and attachment 2. If a deformation (waviness) can be ascertained: Replace seal or reform back into place using heat and fix in place using cold.
- Check outer sealing rail to vertical sealing lip of the mirror triangle. To do so, observe attachment 3. If the sealing rail collides with the vertical sealing lip of the mirror triangle: Either route it such that it rests above the vertical sealing lip of the mirror triangle or shorten.
- Check external sealing rail for correct assembly. To do this, ensure that it is engaged into the three existing mounting straps on the door. See Attachment 4. Also ensure that the outer sealing rail is correctly positioned in the x-direction and closes off flush. See Attachments 5 and 6 for this. Also ensure during assembly that the outer sealing rail is inserted beneath the mirror triangle. See Attachment 7.
- Check the inner seal, especially in the mirror triangle area, for correct assembly. See Attachment 8.

Attachments	
File	Description
Dichtung innen_Deformation_Welligkeit.png	Attachment 1: Check inner seal (SNR A2327203102/-3202)



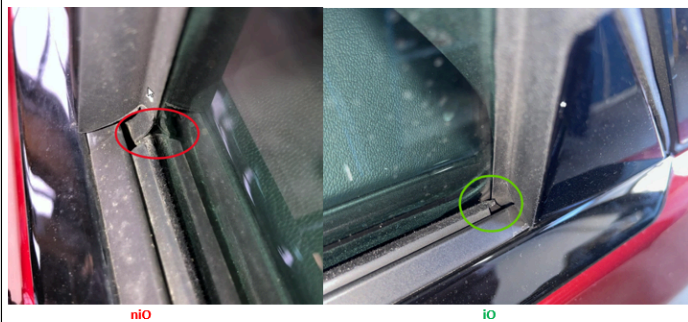
Dichtung innen_Deformation_Welligkeit (2).png

Attachment 2: Check inner seal for deformation by spreading out the outer seal with a wedge. Picture shows the not okay state



Dichtung außen_Bordkantenzierstab.png

Attachment 3: Check outer seal (waistline trim strip) for collision with the vertical sealing lip of the mirror triangle.

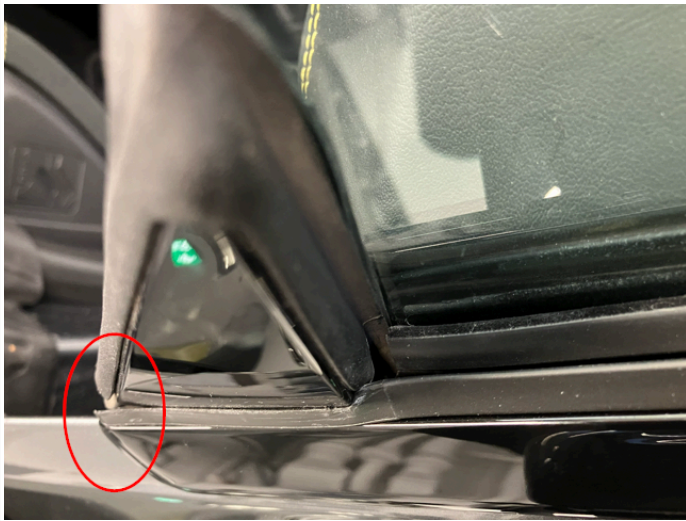


Dichtung außen_Bordkantenzierstab (2).png

Attachment 4: Check the correct installation of the outer seal (waistline trim strip) in the three mounting straps of the door.



Dichtung außen_Bordkantenzierstab (3).png



Attachment 5: Check the correct positioning of the outer seal (waistline trim strip) in the x-direction. Picture shows the not okay state

Dichtung außen_Bordkantenzierstab (4).png



Attachment 6: Check the outer seal (waistline trim strip) for correct positioning.

Dichtung außen_Bordkantenzierstab (5).png



Attachment 7: Check the outer seal (waistline trim strip) for correct positioning in the mirror triangle area. Picture shows the not okay state

Spiegeldreieck.png

Attachment 8: Check the correct assembly of the inner seal and/or mirror triangle.



WIS-References		
Document number	Title	Note
AR67.30-P-0008SLY	Remove/install front door side window	Model series 192, 232
AR67.30-P-0100SLY	Adjust side window at front	BR232
AR67.30-P-0100SLZ	Adjust side window at front	BR192
AR72.10-P-1700SLY	Remove/install outer sealing rail	Model series 192, 232
AR72.10-P-0550SLY	Adjust front door	Model series 192, 232
AR72.10-P-1600SLY	Remove/install inner sealing rail	BR232

Disclaimer

NOTE: The information contained in this document is intended for use by trained, professional technicians with the knowledge to properly and safely perform diagnosis and repairs on Mercedes-Benz vehicles, using Mercedes-Benz approved tools and equipment. It informs service technicians about conditions that could occur in certain vehicles and provides information that could assist in proper vehicle diagnosis, service, or repair. It does not indicate that a defect is present in any vehicle referenced in this document nor does it imply warranty coverage. DO NOT assume that a symptom or condition, or a described cause of a symptom or condition, affects any particular vehicle or groups of vehicles, or that a described repair applies to any particular vehicle or groups of vehicles. There can be multiple causes resulting in the same or similar symptoms or conditions described in this document, and trained professional service technicians must use their diagnostic skills to make evaluations on a case-by-case basis. The information contained in this document does not guarantee warranty coverage nor does it extend the vehicle's warranty in any way.

Symptoms
Body > Body/Cab > Body noises > Wind noises
Body > Door/Flap > Door > Door > Wind noises
Body > Door/Flap > Door > Door > Seal deformed
Body > Glazing > Side window > Noise

Parts						
Part number	ES1	ES2	Designation	Quantity	Note	EPC
A2327203102 / -3202			Inner seal	1		X
A2327203302 / -3402			Outer sealing rail (waistline trim strip)	1		X

Operation numbers/damage codes

XENTRY Tips

Op. no.	Operation text	Time	Damage code	Note
---------	----------------	------	-------------	------