

Field campaign

Topic	Software Update Window Short Drop Deletion Continental GT/GTC 26MY (SC25 /31)
Market area	Bentley: worldwide (2WBE),China 796 VW Import Comp. Ltd (Vico), Beijing (6796)
Brand	Bentley
Transaction No.	2078277/28
Campaign number	ED59
Note	
Type	
US code	

Vehicle data

26MY Continental GT / GTC

Sales types

Type	MY	Brand	Designation	Engine code	Gearbox code	Final drive code
Z23*	2026	E		*	*	*
Z24*	2026	E		*	*	*

Documents

Document name
master.xml
gt_glass_set_measurement_sheet.pdf
gtc_glass_set_measurement_sheet.pdf
v28sc2531vinlist.pdf

ED59

Transaction No.: 2078277
/28

Software Update | Window Short Drop Deletion | Continental GT/GTC | 26MY
(SC25/31)

Release date: Feb 16, 2026

Notes

▼ **Repair instructions**

Technical background

CAUTION

Please refer to all of the instructions within the Work section. The instructions MUST be followed in the exact order as detailed

Remedy

All instructions within the Work section must be conducted as detailed

Software update is available for the left and right hand rear door control modules - Diagnostic address 00BB Driver side and 00BC Passenger side

The software eliminates the rear window short drop function

Customer notification

Please ensure the software instructions within the Service campaign must be conducted at the nearest opportunity

Warranty

Warranty type 710 or 790

Damage service number ED59

Damage code 00 66

Criterion ID 01

Time to conduct the Software Version Management (SVM) update - Rear door control modules

Labour operation code 01 51 00 00

Time As per ODIS log Must not exceed 50 TU

Time to conduct initial measurement checks Profile (Y-Axis) and Interlock (X-Axis)

Labour operation code 64 38 02 99

Time 15 TU

CAUTION

The labour codes below must only be claimed if the Profile (Y-Axis) and Interlock (X-Axis) were out of specification (before and / or after the software update was conducted)

Time to conduct the front glass adjustment procedure

Labour operation code 64 40 15 00

Time 140 TU (per side)

Time to conduct the rear glass adjustment procedure

Labour operation code 64 75 15 00

Time 170 TU (per side)

Water leak test

Labour operation code 64 38 01 99 (Use this code when conducting the water leak test)

Time 20 TU

Additional Time Allowance

A 100TU allowance may be claimed only if a SVM update fails to complete successfully. This is intended to cover additional diagnostic or recovery work directly resulting from the failed update. It must not be used for unrelated delays or issues.

ODIS logs must be attached to a DISS ticket for evidence of failure. Claims without valid documentation will be rejected. Warranty Adjudicators will review associated ODIS logs and DISS queries to determine actual software update time.

Parts

Not applicable

Parts supply

NOTICE

Should one or both of the measurements not be within specification the operative must refer to Rep.Gr 64 - Rear door drop glass - To adjust and conduct the front and rear glass adjustment procedure for the affected side left and / or right hand side to completion (all steps)

NOTICE

Adjustment of all side glass requires the interior trim to be removed. Refer to "Rear quarter trim – To remove and fit". Rep. Gr. 70



To carry out the "Rear quarter trim – To remove and fit". Rep. Gr. 70 procedure, the following one-time-use parts must be replaced during the reinstallation:

N 989 244 01 x4 (Front seat belt slider bar fixing x2 each side)

N 989 244 01 x2 (Rear seat belt fixing x1 each side)

Refer to ETKA parts catalogue

Parts despatch control

Not applicable

Technical background

CAUTION

Please refer to all of the instructions within the Work section. The instructions MUST be followed in the exact order as detailed

Check

If the vehicle is not already listed as repaired in "Repair history" (in Elsa pro), check for the presence of the blue paint completion mark as shown within the Identification section

If neither are evident please conduct the instructions within the Work section to completion.

Parts

Not applicable

Work

CAUTION

Ensure the vehicle is connected to a suitable 12V Lithium Ion battery charger before conducting any work

Section 1 – Initial Glass Set Measurements

NOTICE

Conduct initial glass set measurements and record the results in the model specific measurement document attached (see documents section). After completing the initial measurements, DO NOT make any adjustments until after the software update has been completed

CAUTION

When completing the initial glass set measurements strictly adhere to the instructions in section 2



When completing measurements on Continental GTC models, complete a set of measurements with both the roof up and the roof down, as per the attached glass set measurement sheet

Section 2 – Glass Set Measurement Instructions

CAUTION

When completing the glass set measurement procedure, strictly adhere to the instructions below

If unsure about the measurement process follow the video on eAcademy or raise a full technical DISS query.

To eliminate confusion about the usage of WT10549/3 and the Y axis profile measurement between the front and rear windows and how to correctly read/enter the measurements in the tables, please refer to the below images to aid with accurate reading of the Y axis profile when using WT10549/3.

Window Parallel

When the window is parallel take the 2mm step from the tool and minus the 2mm gap between front window and tool = -0mm (as shown in figure 1)

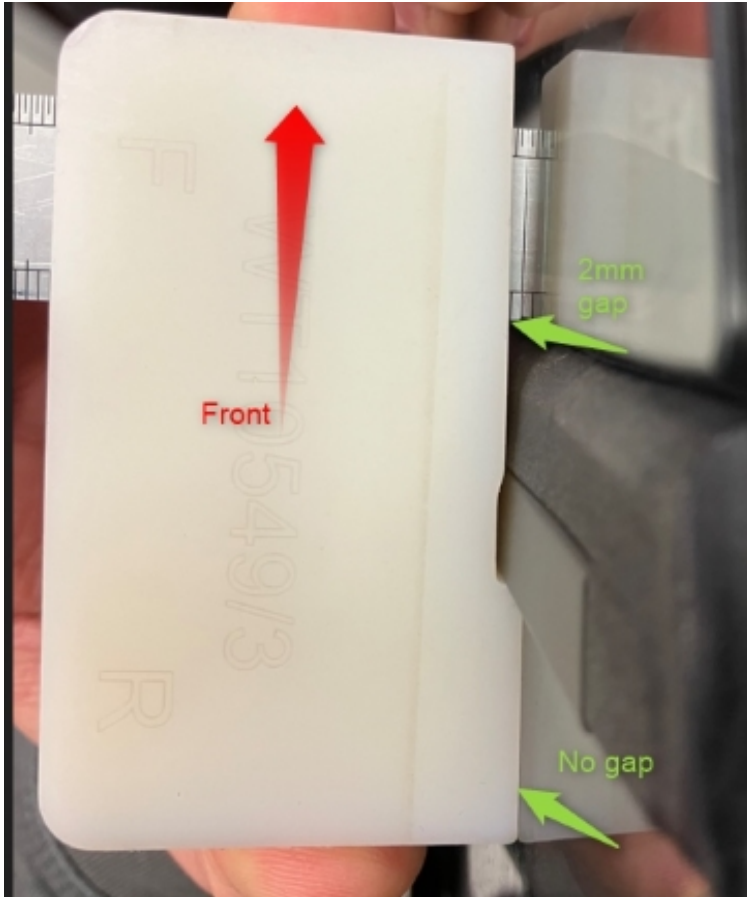


Figure 1

When the rear window is 0mm inboard from the front glass and the windows are parallel, the measurement written as 0mm (figure 2)

Profile (Y-Axis) Roof Down	Vehicle Position	Dimension -X-	Before adjustment
4 50mm from top of division bar	Front drop glass to rear quarter glass	+0 mm / - 2 mm	0mm

Figure 2

Rear Window Inboard

When the rear window is inboard and there is a 2mm step from the tool, when there is no gap between either window and tool (figure 3), the recorded measurement should be -2mm (figure 4)

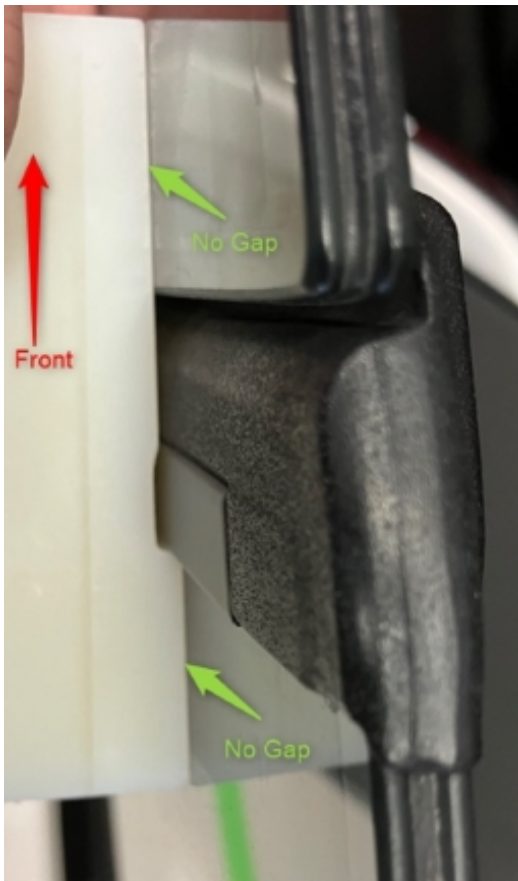


Figure 3

Profile (Y-Axis) Roof Down	Vehicle Position	Dimension -X-	Before adjustment
4 50mm from top of division bar	Front drop glass to rear quarter glass	+0 mm / - 2 mm	-2mm

Figure 4

Rear Window Too Far Inboard

When the rear window is inboard and there is a 2mm step from the tool as well as an additional 1.5mm gap to the window (figure 5), the recorded measurement should be -3.5mm (figure 6).

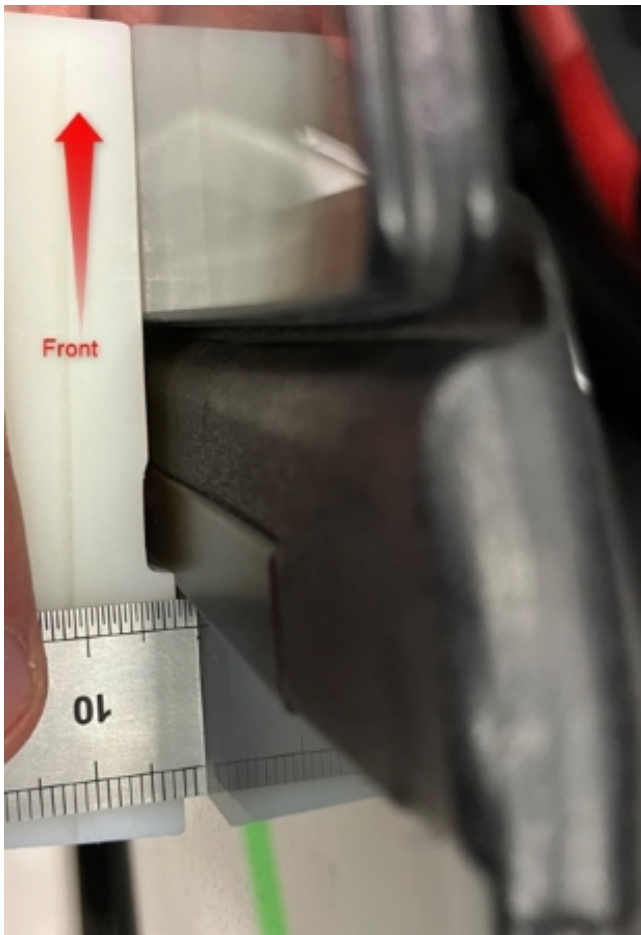


Figure 5

Profile (Y-Axis) Roof Down	Vehicle Position	Dimension -X-	Before adjustment
4 50mm from top of division bar	Front drop glass to rear quarter glass	+0 mm / - 2 mm	-3.5mm

Figure 6

If the tool (WT10549/3) does not sit flush against the rear window then this shows rear window is more than 2mm inboard (more than -2mm), check this by holding the tool on the front window and measuring gap between the rear glass and the tool (as shown in figure 7)

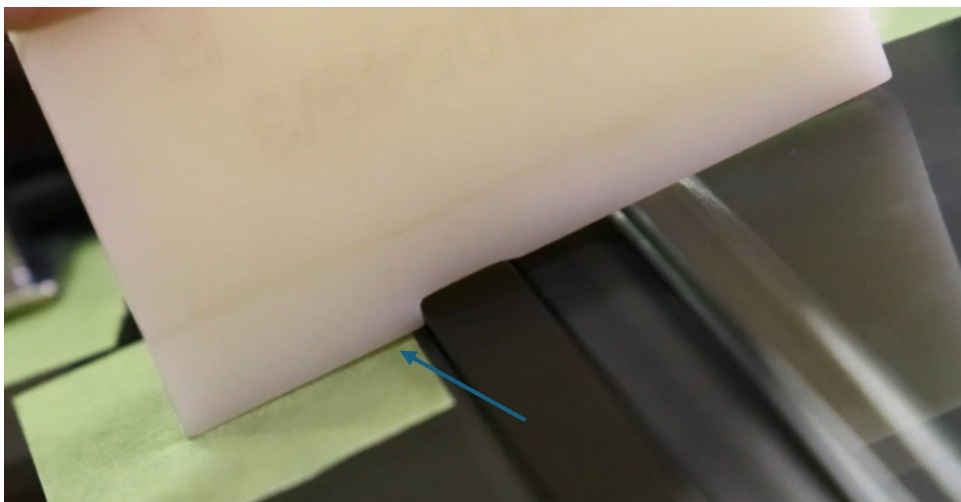


Figure 7

Further explanation can be found in the videos shown in Figure 8, which can be found on eAcademy Digital Learning Hub.

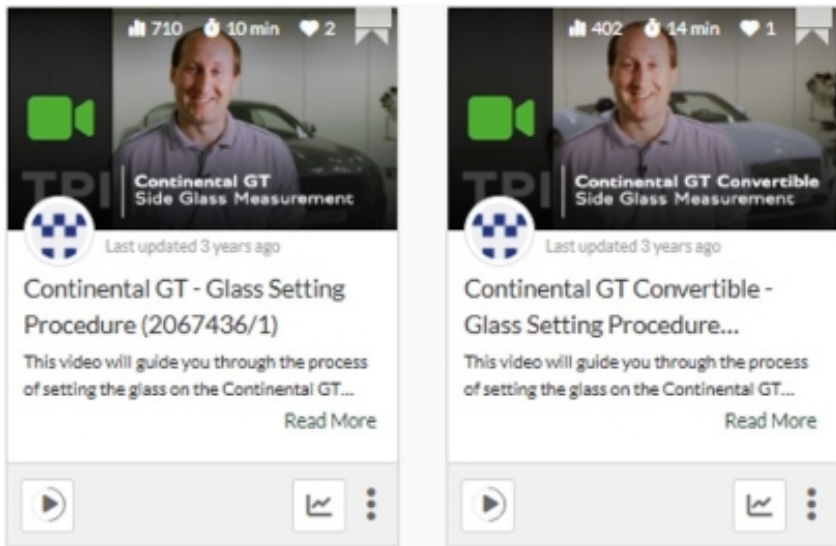


Figure 8

Section 3 - Software update to the rear door control modules 00BB and 00BC - Short drop function elimination

CAUTION

ONLY Chargers that meet the approved specification on the Mandatory Equipment List (available on the Bentley Hub) **MUST** be used.

- The charger must be set to a mode where a **MINIMUM** of 90a is supplied to the battery during the process. Typically, this is known as 'Power Supply Mode' or 'DIAG+ Mode'.
- A voltage of exactly 14.8v must be set and maintained throughout the process.
- Please refer to the manual to ensure that these requirements are met before beginning any SVM update



The following software update eliminates the rear window short drop function

1) Preparation before update

- Conduct a full guided fault find of the vehicle.



If a 'Check installation list' pop-up appears, select 'close' (Figure 9)

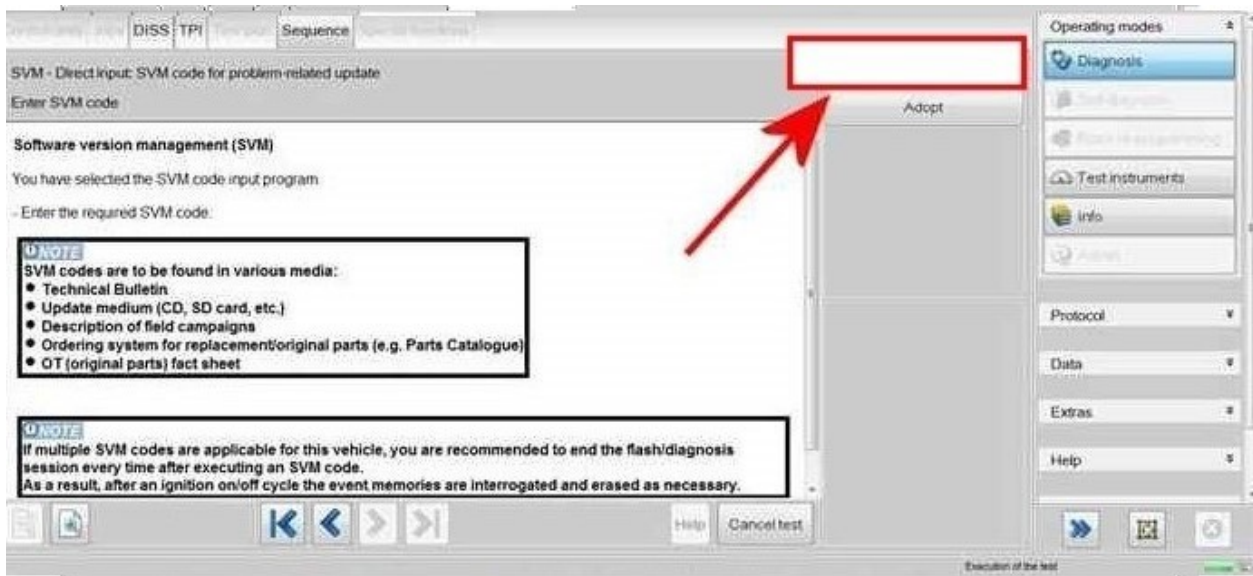


Figure 11

4) The control modules will automatically be updated one by one, starting with 00BB (Driver rear) and then 00BC (passenger rear)



Upon successful completion you will get a failure message of 8113 SVM Error

NOTICE

If you get any other error code, such as 8118, please refer to TPI 2078962

5) On completion open the doors and ensure that the rear windows no longer drop.

6) Switch off the ignition

- Remove the diagnostic interface from the OBD port
- Switch off and remove the battery charger from the vehicle
- Close the bonnet, boot and all doors
- Lock the vehicle
- Wait 5 minutes to allow the vehicle to go into bus silence
- When 5 minutes has elapsed, unlock the vehicle and open the driver's door
- Switch on the ignition

7) Once the software update has been conducted continue with the remaining instructions

Hint: The remaining instructions MUST be conducted regardless if adjustments were conducted or not

8) Referring to Rep.Gr 64 - Measure and record the points as detailed below on the left and right hand side Profile (Y-Axis) and Interlock (X-Axis).



CAUTION

Strictly adhere to the instructions in section 2 when completing the glass set measurements after the

software update has been completed.

Note: Should the measurements for the left and right hand side be within specification please go to step 11 and follow all remaining steps until completion

Or

 NOTICE

Should one or both of the measurements not be within specification the operative must refer to Rep.Gr 64 - Rear door drop glass - To adjust and conduct the front and rear glass adjustment procedure for the affected side left and / or right hand side to completion (all steps) and record a final measurement in the attached document

 CAUTION


All measurements must be recorded in the attached measurement documentation and saved as they will be required to be attached to a non-technical DISS query at the end of the procedure



FAILURE TO ATTACH THE MEASUREMENTS TO THE DISS WILL RESULT IN NON PAYMENT OF THE WARRANTY CLAIM

Note: Once the adjustment has been conducted please go to step 10 and follow all remaining steps until completion

9) **VERY IMPORTANT** - Referring to Rep.Gr 64 - Side glass - To initialise

 CAUTION

When conducting step 11 extra care must be taken to ensure the interior trim is suitably protected, any water which enters the vehicle due to a leak must be dried / cleaned immediately. Ensure all windows, sunroof and convertible roof (where applicable) are fully closed before conducting step 11

10) Conduct a water leak check to ensure that water is not leaking into the vehicles interior - Water leaks must be resolved before handing over the vehicle to the customer

11) Conduct the PDI road test to check for any wind noise related issues

 NOTICE

Should the vehicle fail the water leak check or a wind noise check, please raise a full technical DISS query

12) Upon successful completion of the PDI road test, raise a non-technical DISS query titled SC25/30 X and Y Axis measurement feedback ensuring the following is attached

- Online ODIS log
- A completed model specific measurement table

13) Referring to the Identification section - Apply a blue paint completion mark on the engine partition brace (Figure 12)

Identification

Blue paint completion mark on the engine partition brace



Figure 12

▲ Repair instructions ▲ Notes

Side glass measurements GT 25/26MY					
Interlock (Z-Axis)	Vehicle Position	Dimension -X-	Before SVM	After SVM	After adjustment (if required)
A 50 mm from division bar	Front quarter glass	7.5 mm ± 1 mm			
B 150 mm from division bar	Front of door drop glass	8 mm ± 1 mm			
C 50 mm from rear of door drop glass	Rear of door drop glass	8 mm ± 1 mm			
D 50 mm from rear drop glass division bar	Front of rear quarter glass	8 mm ± 1 mm			
E 50 mm from rearmost section of rear drop glass	Rear of rear quarter glass	8 mm ± 1 mm			
Interlock (X-Axis)	Vehicle Position	Dimension -X-	Before SVM	After SVM	After adjustment (if required)
4 50 mm from the top of the window	Rear door quarter glass strip to front door drop glass edge	11 mm ± 1 mm			
5 50 mm from the waistrail seal	Rear door quarter glass strip to front door drop glass edge	11 mm ± 1 mm			
Profile (Y-Axis)	Vehicle Position	Dimension -X-	Before SVM	After SVM	After adjustment (if required)
1 50 mm from division bar	Front quarter glass	10 mm ± 1 mm			
2 150 mm from division bar	Front of door drop glass	10 mm ± 2 mm			
3 50 mm from rear of door drop glass	Rear of door drop glass	10 mm ± 2 mm			
6 50 mm from rear drop glass division bar	Front of rear quarter glass	10 mm ± 2 mm			
7 50 mm from rearmost section of rear drop glass	Rear of rear quarter glass	10 mm ± 2 mm			
8 50mm forwards of rear of front drop glass (waist rail gap)	Rear of door drop glass	5mm ± 1mm			
9 50mm rearward of front of rear drop glass (waist rail gap)	Front of rear quarter glass	5mm ± 1mm			
Profile (Y-Axis)	Vehicle Position	Dimension -X-	Before SVM	After SVM	After adjustment (if required)
4 50mm from top of division bar	Front drop glass to rear quarter glass	+0 mm / - 2.5 mm			
5 50mm from bottom of division bar	Front drop glass to rear quarter glass	+0 mm / - 2 mm			

Side glass measurements GTC 25/26MY					
Interlock (Z-Axis)	Vehicle Position	Dimension -X-	Before SVM	After SVM	After adjustment (if required)
1 50 mm from division bar	Front quarter glass	7.5 mm ± 1 mm			
2 100 mm from division bar	Front of door drop glass	8.5 mm ± 1 mm			
3 50 mm from rear of door drop glass	Rear of door drop glass	8.5 mm ± 1 mm			
6 50 mm from rear drop glass division bar	Front of rear quarter glass	8.5 mm ± 1 mm			
7 100 mm from where the hood meets the brightware	Rear of rear quarter glass	10 — 16mm			
Interlock (X-Axis) Roof Up	Vehicle Position	Dimension -X-	Before SVM	After SVM	After adjustment (if required)
4 50 mm from the top of the window	Rear door quarter glass strip to front door drop glass edge	11 mm ± 1 mm			
5 50 mm from the waistrail seal	Rear door quarter glass strip to front door drop glass edge	11 mm ± 1 mm			
Interlock (X-Axis) Roof Down	Vehicle Position	Dimension -X-	Before SVM	After SVM	After adjustment (if required)
4 50 mm from the top of the window	Rear door quarter glass strip to front door drop glass edge	11 mm ± 1 mm			
5 50 mm from the waistrail seal	Rear door quarter glass strip to front door drop glass edge	11 mm ± 1 mm			
Profile (Y-Axis)	Vehicle Position	Dimension -X-	Before SVM	After SVM	After adjustment (if required)
1 50 mm from division bar	Front quarter glass	10 mm ± 1 mm			
2 100 mm from division bar	Front of door drop glass	14 mm ± 2 mm			
8 50mm forwards of rear of front drop glass (waist rail gap)	Rear of door drop glass	5mm ± 1mm			
9 50mm rearward of front of rear drop glass (waist rail gap)	Front of rear quarter glass	5mm ± 1mm			
Profile (Y-Axis) Roof Up	Vehicle Position	Dimension -X-	Before SVM	After SVM	After adjustment (if required)
4 50mm from top of division bar	Front drop glass to rear quarter glass	+0 mm / - 2.5 mm			
5 50mm from bottom of division bar	Front drop glass to rear quarter glass	+0 mm / - 2 mm			
Profile (Y-Axis) Roof Down	Vehicle Position	Dimension -X-	Before SVM	After SVM	After adjustment (if required)
4 50mm from top of division bar	Front drop glass to rear quarter glass	+0 mm / - 2.5 mm			
5 50mm from bottom of division bar	Front drop glass to rear quarter glass	+0 mm / - 2 mm			

SCBCB13S6TC028840	SCBCM1ZG8TC028819	SCBDN33SXTC028816
SCBCM13S0TC028780	SCBCP2ZG0TC028861	SCBDP4ZG0TC028777
SCBCM13S3TC028627	SCBDM33S4TC028796	SCBDP4ZG2TC028800
SCBCM13S3TC028790	SCBDM33S5TC028810	SCBDR4ZG2TC028760
SCBCM1ZG0TC028894	SCBDP4ZG5TC028788	SCBDR4ZGXTC028781
SCBDM33S7TC028923	SCBDR4ZG6TC028731	SCBCB13S3TC028696
SCBDM33SXTC028625	SCBDR4ZG8TC028830	SCBCB13S6TC028773
SCBDP4ZG4TC028877	SCBDR4ZG9TC028853	SCBCD13S3TC028742
SCBDP4ZG5TC028726	SCBCB13S1TC028647	SCBCM13S1TC028769
SCBDP4ZG5TC028905	SCBCB13S1TC028650	SCBCM13S6TC028783
SCBCB13S2TC028883	SCBCB13S2TC028642	SCBCM13S6TC028797
SCBCB13SXTC028873	SCBCB13S8TC028645	SCBCM13S9TC028762
SCBCM13S0TC028701	SCBCB13S9TC028640	SCBCM1ZG3TC028775
SCBCM13S4TC028815	SCBCH13S4TC028785	SCBCN13S7TC028739
SCBCM13S6TC028878	SCBCM13S2TC028795	SCBCN13S8TC028751
SCBCM13S9TC028888	SCBCM13S2TC028831	SCBCP2ZG2TC028778
SCBCM1ZG4TC028834	SCBCM13SXTC028799	SCBCP2ZG5TC028631
SCBCN1ZG2TC028862	SCBCN13S3TC028527	SCBCR2ZG0TC028787
SCBDM33S6TC028850	SCBCN13S4TC028715	SCBDB33S0TC028171
SCBDN33S6TC028618	SCBCN13S7TC028286	SCBDM33S8TC028753
SCBDN33S9TC028774	SCBCN13S9TC028709	SCBDN33SXTC028721
SCBDN33SXTC028881	SCBCN1ZGXTC028804	SCBDP4ZGXTC028740
SCBDP4ZG6TC028833	SCBCP2ZG8TC028686	SCBCB13S5TC028652
SCBCB13S0TC028848	SCBCP2ZG9TC028809	SCBCD13S6TC028766
SCBCB13S1TC028812	SCBCR2ZG9TC028822	SCBCM13S3TC028630
SCBCB13S3TC028844	SCBDM33S1TC028710	SCBCP2ZG0TC028729
SCBCB13S8TC028855	SCBDM33S4TC028684	SCBCP2ZG2TC028702
SCBCM13S3TC028689	SCBDN33S3TC028687	SCBCP2ZG3TC028708

SCBCP2ZG4TC028698	SCBDP4ZG9TC028468	SCBCR2ZG9TC028626
SCBCP2ZG4TC028734	SCBCB13S0TC028655	SCBDM33S9TC028552
SCBCP2ZG8TC028705	SCBCB13S0TC028672	SCBDN33S8TC028572
SCBCP2ZGXTTC028429	SCBCB13S4TC028660	SCBDN33S9TC028614
SCBCR2ZG7TC028690	SCBCB13S4TC028674	SCBDP4ZG1TC028352
SCBDM33S7TC028548	SCBCG13S5TC028104	SCBDP4ZG5TC028595
SCBDN33S2TC028194	SCBCM13S0TC028634	SCBDP4ZG5TC028628
SCBDP4ZG9TC028633	SCBCM13S5TC028693	SCBDP4ZGXTTC028611
SCBDP4ZGXTTC028723	SCBCM13S7TC028601	SCBCM13S2TC028537
SCBDR4ZGXTTC028716	SCBCM13SXTTC028530	SCBCM13S6TC028606
SCBCB13S0TC028722	SCBCN13S1TC028283	SCBCM13SXTTC028592
SCBCB13S3TC028665	SCBCP2ZG9TC028678	SCBCN13S1TC028557
SCBCB13S8TC028676	SCBCR2ZG8TC028391	SCBCN13S4TC028617
SCBCG13S9TC028252	SCBCU13S1TC028691	SCBCN13S5TC028593
SCBCJ13S7TC028719	SCBDM33S0TC028679	SCBCN13S5TC028612
SCBCM13S2TC028683	SCBDM33S6TC028699	SCBCN13S9TC028533
SCBCM13S4TC028717	SCBDM33S8TC028588	SCBCP2ZG2TC028635
SCBCM13S7TC028615	SCBDN33S4TC028603	SCBCP2ZG6TC028511
SCBCM13S9TC028566	SCBDR4ZG1TC028524	SCBCP2ZGXTTC028494
SCBCM13S9TC028681	SCBCB13S0TC028669	SCBDM33S4TC028605
SCBCM1ZG1TC028712	SCBCB13S4TC028657	SCBDM33S5TC028600
SCBCN13S6TC028599	SCBCB13S7TC028667	SCBDN33S1TC028512
SCBCN13SXTTC028637	SCBCB13S9TC028671	SCBDN33S3TC028608
SCBCP2ZG9TC028485	SCBCM13S0TC028469	SCBDN33S6TC028389
SCBDM33S0TC028519	SCBCM13S2TC028540	SCBDP4ZG4TC028622
SCBDM33S7TC028565	SCBCM13S6TC028623	SCBDP4ZG9TC028597
SCBDN33SXTTC028234	SCBCN13S1TC028591	SCBDP4ZG9TC028616
SCBDP4ZG7TC028663	SCBCN13S1TC028607	SCBCM13S8TC028610

SCBCN13S2TC028583	SCBCP2ZG1TC028268	SCBCU13S7TC028288
SCBCN13S3TC028575	SCBCP2ZG1TC028481	SCBDP4ZG1TC028528
SCBCN13S6TC028585	SCBCP2ZG2TC028411	SCBDP4ZG9TC028440
SCBCN13S6TC028604	SCBCP2ZG3TC028482	SCBDP4ZG9TC028504
SCBCN13S7TC028594	SCBCP2ZG6TC028363	SCBDR33SXTTC028464
SCBCN13S8TC028555	SCBCP2ZG6TC028380	SCBDR4ZG1TC028488
SCBCN13S9TC028516	SCBCP2ZG6TC028458	SCBCP2ZG0TC028472
SCBCN13S9TC028547	SCBCP2ZG7TC028467	SCBCP2ZG2TC028487
SCBCP2ZG5TC028435	SCBCP2ZG7TC028498	SCBCP2ZG2TC028490
SCBCP2ZG7TC028503	SCBDM33S3TC028532	SCBCP2ZG3TC028501
SCBDM33S4TC028569	SCBDM33S5TC028578	SCBCP2ZG4TC028491
SCBDM33S4TC028586	SCBDM33S8TC028090	SCBCP2ZG4TC028507
SCBDN33S5TC028576	SCBDN33S0TC028534	SCBCP2ZG6TC028475
SCBDP4ZG6TC028590	SCBDP4ZG0TC028522	SCBCR2ZGXTTC028425
SCBDP4ZGXTTC028561	SCBDP4ZG0TC028567	SCBCR2ZGXTTC028506
SCBCM13S1TC028433	SCBDP4ZG3TC028515	SCBDP4ZG2TC028473
SCBCM13S2TC028568	SCBDP4ZG5TC028452	SCBDP4ZG3TC028496
SCBCM13S3TC028563	SCBDP4ZG6TC028508	SCBDP4ZG6TC028492
SCBCM13S3TC028577	SCBDP4ZG6TC028556	SCBDP4ZG7TC028484
SCBCM13S5TC028550	SCBDP4ZG7TC028582	SCBDP4ZGXTTC028480
SCBCM13S5TC028581	SCBDR4ZG3TC028542	SCBDR4ZG4TC028436
SCBCM13S6TC028525	SCBDU33S4TC028538	SCBCB13S6TC028353
SCBCM13S8TC028574	SCBCN13S3TC028544	SCBCM13S8TC028302
SCBCM13S9TC028521	SCBCN13S4TC028553	SCBCN13SXTTC028461
SCBCN13S0TC028579	SCBCN13S5TC028495	SCBCP2ZG0TC028424
SCBCN13S4TC028536	SCBCN13S7TC028546	SCBCP2ZG1TC028447
SCBCN13S5TC028514	SCBCP2ZG4TC028510	SCBCP2ZG2TC028442
SCBCN13S6TC028571	SCBCR2ZG9TC028478	SCBCP2ZG3TC028451

SCBCP2ZG5TC028466	SCBDP4ZG0TC028374	SCBCR2ZG2TC028399
SCBCP2ZG7TC028386	SCBDP4ZG4TC028331	SCBCR2ZG5TC028381
SCBCP2ZG7TC028405	SCBDP4ZG4TC028393	SCBCR2ZG5TC028395
SCBCP2ZG7TC028419	SCBDP4ZG8TC028364	SCBCU13S0TC028343
SCBCP2ZGXTTC028463	SCBDR4ZG1TC028412	SCBCU13S4TC028409
SCBCR2ZG8TC028455	SCBCM13S5TC028340	SCBDP4ZG3TC028367
SCBCR2ZGXTTC028327	SCBCN13S9TC028323	SCBDP4ZG5TC028385
SCBDP4ZG2TC028408	SCBCP2ZG6TC028377	SCBDP4ZG8TC028378
SCBDP4ZG2TC028456	SCBCP2ZG8TC028414	SCBDP4ZG8TC028400
SCBDP4ZG3TC028448	SCBCP2ZG9TC028406	SCBDP4ZGXTTC028334
SCBDP4ZG4TC028460	SCBCP2ZGXTTC028396	SCBDR4ZG1TC028247
SCBDP4ZG6TC028427	SCBCR2ZGXTTC028313	SCBCB13S0TC028316
SCBDP4ZG6TC028444	SCBCU13S0TC028388	SCBCB13S4TC028349
SCBDP4ZG8TC028431	SCBCU13S1TC028383	SCBCB13S5TC028358
SCBDP4ZG8TC028476	SCBDM33S7TC028291	SCBCJ13S1TC028229
SCBDP4ZG9TC028423	SCBDP4ZG1TC028397	SCBCM13SXTTC028298
SCBDP4ZG9TC028471	SCBDP4ZG1TC028416	SCBCN13S3TC028284
SCBCP2ZG0TC028438	SCBDP4ZG3TC028420	SCBCN13S9TC028290
SCBCP2ZG0TC028441	SCBDP4ZG5TC028404	SCBCP2ZG6TC028329
SCBCP2ZG1TC028450	SCBDP4ZG8TC028297	SCBCP2ZG7TC028341
SCBCP2ZG2TC028392	SCBDR4ZGXTTC028361	SCBCR2ZG2TC028371
SCBCP2ZG3TC028434	SCBCB13S8TC028161	SCBCR2ZG6TC028356
SCBCP2ZG5TC028418	SCBCB13S8TC028337	SCBDH33SXTTC028287
SCBCP2ZG6TC028430	SCBCD13S8TC028350	SCBDP4ZG3TC028322
SCBCP2ZG9TC028454	SCBCM13S9TC028373	SCBDP4ZG8TC028266
SCBCP2ZGXTTC028415	SCBCP2ZG1TC028402	SCBDR43S8TC028355
SCBCR2ZG3TC028346	SCBCP2ZG4TC028376	SCBDR4ZG0TC028370
SCBCR2ZG5TC028445	SCBCP2ZG5TC028368	SCBDR4ZG1TC028345

SCBCB13S1TC028163	SCBCM13S3TC028157	SCBCN13S6TC028246
SCBCB13S2TC028317	SCBCN13S4TC028326	SCBCP2ZGXTTC028222
SCBCB13S9TC028279	SCBCN1ZG9TC028275	SCBCU13S4TC028197
SCBCH13S7TC028330	SCBCP2ZG0TC028293	SCBCU13S8TC028249
SCBCJ13S0TC028304	SCBCR2ZG8TC028276	SCBDB33S5TC028182
SCBCM13S0TC028312	SCBCU13SXTTC028320	SCBDM33SXTTC028060
SCBCM13S3TC028238	SCBDP4ZG5TC028239	SCBDP4ZG5TC028189
SCBCM13S4TC028118	SCBDP4ZG5TC028306	SCBDP4ZG5TC028208
SCBCM13S4TC028250	SCBDR4ZG1TC028300	SCBDP4ZG6TC028220
SCBCM13S6TC028265	SCBCM13S8TC028235	SCBDP4ZG6TC028251
SCBCM13S7TC028193	SCBCN13S3TC028236	SCBDP4ZG7TC028131
SCBCN13SXTTC028332	SCBCN13S7TC028269	SCBDP4ZG7TC028212
SCBCP2ZG7TC028310	SCBCN1ZG9TC028261	SCBDP4ZG7TC028243
SCBCR2ZG1TC028295	SCBCP2ZG4TC028281	SCBDP4ZGXTTC028205
SCBCR2ZG5TC028333	SCBCP2ZG9TC028258	SCBDP4ZGXTTC028270
SCBDP4ZG0TC028309	SCBCP2ZGXTTC028253	SCBCB13S8TC028242
SCBDP4ZG3TC028319	SCBCR13S3TC028256	SCBCH13S7TC028120
SCBDP4ZG6TC028315	SCBDB33S7TC028278	SCBCM13S0TC028097
SCBDP4ZG7TC028338	SCBDP4ZG0TC028259	SCBCM13S0TC028133
SCBDP4ZG9TC028325	SCBDP4ZG0TC028262	SCBCM13S2TC028084
SCBDP4ZGXTTC028303	SCBDP4ZG8TC028185	SCBCM13S2TC028134
SCBDP4ZGXTTC028348	SCBDR4ZG0TC028255	SCBCM13S2TC028151
SCBDR4ZG2TC028158	SCBCB13S1TC028227	SCBCM13S2TC028196
SCBDR4ZG3TC028282	SCBCB13S6TC028241	SCBCM13S3TC028062
SCBCB13S6TC028272	SCBCB13S8TC028225	SCBCM13S3TC028109
SCBCB13S7TC028264	SCBCB13S9TC028105	SCBCM13S6TC028203
SCBCB13SXTTC028307	SCBCM13SXTTC028219	SCBCM13S7TC028078
SCBCM13S2TC028201	SCBCN13S4TC028245	SCBCM13S9TC028101

SCBCM13S9TC028213	SCBDP4ZG4TC028135	SCBDR4ZG4TC028145
SCBCM13SXTTC028155	SCBDP4ZG5TC028192	SCBCB13S1TC028177
SCBCN13S0TC028226	SCBDR43SXTTC028082	SCBCB13S8TC028063
SCBCN13S1TC028087	SCBDR4ZG1TC028216	SCBCB13S8TC028113
SCBCN13S2TC028146	SCBDR4ZG8TC028231	SCBCB13SXTTC028114
SCBCN13S6TC028098	SCBCB13S3TC028066	SCBCB13SXTTC028159
SCBCN13S6TC028179	SCBCB13S3TC028181	SCBCP2ZG0TC028049
SCBCN13S7TC028059	SCBCB13S4TC028173	SCBCP2ZG2TC028070
SCBCN13S7TC028076	SCBCB13S5TC028165	SCBCP2ZG5TC028127
SCBCN13S7TC028207	SCBCB13S6TC028191	SCBCP2ZG7TC028081
SCBCN13S8TC028152	SCBCB13S8TC028175	SCBCP2ZGXTTC028107
SCBCN13SXTTC028086	SCBCB13S9TC028055	SCBDP4ZG0TC028102
SCBCN13SXTTC028122	SCBCB13S9TC028167	SCBDP4ZG0TC028116
SCBCN13SXTTC028136	SCBCG13S0TC028169	SCBDP4ZG1TC028075
SCBCP2ZG2TC028232	SCBCM13S3TC028188	SCBDP4ZG3TC028093
SCBCP2ZG8TC028140	SCBCM13S3TC028210	SCBDP4ZG3TC028126
SCBCP2ZG8TC028154	SCBCN13S3TC028186	SCBDP4ZG4TC028068
SCBCR13SXTTC028092	SCBCN13S6TC027999	SCBDP4ZG4TC028099
SCBCR2ZG5TC028199	SCBCN13S6TC028117	SCBDP4ZG8TC028056
SCBCU13S2TC028215	SCBCN1ZG3TC028143	SCBDP4ZG8TC028073
SCBCU13S4TC028183	SCBCP2ZG4TC028149	SCBDP4ZG8TC028106
SCBDM33SXTTC028088	SCBCP2ZGXTTC028138	SCBDR4ZG1TC028121
SCBDN33S1TC028137	SCBDM33S2TC028148	SCBDR4ZG4TC028064
SCBDN33S2TC028079	SCBDM33S6TC028153	SCBDR4ZG4TC028095
SCBDN33S2TC028129	SCBDN33S3TC028141	SCBCP2ZG1TC027993
SCBDN33S5TC028111	SCBDP4ZG0TC028150	SCBCN13S3TC027930
SCBDP4ZG1TC028156	SCBDP4ZG0TC028200	SCBCP2ZG4TC028054
SCBDP4ZG1TC028223	SCBDP4ZGXTTC028124	SCBDN33S4TC027984

SCBDN33S8TC028006	SCBDP4ZG8TC028039	SCBDP4ZGXTTC027992
SCBDP4ZG6TC028069	SCBDP4ZGXTTC027944	SCBDR4ZG5TC028011
SCBDP4ZG7TC027948	SCBDP4ZGXTTC028043	SCBDR4ZG6TC027997
SCBDP4ZG7TC028050	SCBDR4ZGXTTC028036	SCBCB13S1TC027837
SCBCB13S7TC028040	SCBCB13S0TC027988	SCBCB13S2TC028009
SCBCM1ZG2TC028072	SCBCB13S5TC028022	SCBCB13S6TC027946
SCBCN13S5TC028058	SCBCB13S6TC028014	SCBCB13S6TC027963
SCBCP2ZG6TC028041	SCBCB13S9TC027990	SCBCB13S7TC027986
SCBCP2ZG8TC028042	SCBCB13S9TC028038	SCBCB13S8TC027978
SCBCU13S2TC027971	SCBCB13SXTTC027979	SCBCB13SXTTC027982
SCBDM33S9TC028020	SCBCB13SXTTC028016	SCBCN13S1TC027960
SCBDM33SXTTC028026	SCBCM13S8TC028025	SCBCP2ZG0TC027967
SCBDP4ZG0TC028018	SCBCN13S2TC027661	SCBCP2ZG1TC027976
SCBDP4ZG5TC028046	SCBCN13S9TC027995	SCBCP2ZG5TC027950
SCBCB13S3TC028052	SCBCP2ZG2TC028019	SCBCP2ZG8TC027974
SCBCB13S5TC028005	SCBCP2ZG3TC028031	SCBCP2ZG9TC027966
SCBCB13S6TC028045	SCBCP2ZG7TC028002	SCBCP2ZGXTTC027958
SCBCN13S2TC028034	SCBCP2ZG9TC027983	SCBCU13S8TC027828
SCBCP2ZG3TC028028	SCBCP2ZGXTTC027961	SCBDM33S1TC027959
SCBCP2ZG9TC028048	SCBCR23S6TC028001	SCBDM33S2TC027954
SCBCP2ZGXTTC028012	SCBCU13S0TC028035	SCBDM33S7TC027965
SCBCR2ZG6TC028051	SCBDM33S5TC028015	SCBDP4ZG4TC027969
SCBDM33S3TC027994	SCBDM33S6TC027973	SCBDP4ZG5TC027981
SCBDM33S4TC027115	SCBDP4ZG4TC028023	SCBDP4ZG9TC028003
SCBDM33S5TC027933	SCBDP4ZG5TC028032	SCBDP4ZGXTTC027989
SCBDM33S5TC028029	SCBDP4ZG7TC027951	SCBDR4ZG1TC027941
SCBDN33S5TC027962	SCBDP4ZG8TC028008	SCBDR4ZG5TC027912
SCBDP4ZG3TC028000	SCBDP4ZG9TC027918	SCBCB13S0TC027957

SCBCB13S1TC027935	SCBCN13S6TC027856	SCBCU13S6TC027858
SCBCB13S2TC027975	SCBCP2ZG1TC027914	SCBDB33S6TC027896
SCBCB13S3TC027953	SCBCP2ZG2TC027906	SCBDM33S5TC027835
SCBCB13S4TC027945	SCBCP2ZG2TC027923	SCBDM33S7TC027805
SCBCB13S6TC027932	SCBCP2ZG6TC027911	SCBDN33S5TC027881
SCBCB13S7TC027938	SCBCP2ZG7TC027917	SCBDP4ZG3TC027915
SCBCB13S8TC027883	SCBCU13S4TC027907	SCBCB13S0TC027859
SCBCB13S9TC027925	SCBCU13SXTTC027894	SCBCB13S2TC027815
SCBCN13S0TC027898	SCBDM33S0TC027905	SCBCB13S4TC027850
SCBCN13S0TC027920	SCBDM33S1TC027797	SCBCB13S5TC027825
SCBCN13S4TC027970	SCBDM33S2TC027873	SCBCB13S8TC027866
SCBCP2ZG2TC027940	SCBDM33S5TC027625	SCBCB13S9TC027889
SCBCP2ZG8TC027943	SCBDM33S6TC027892	SCBCN13S7TC027641
SCBCP2ZG9TC027949	SCBDM33S9TC027840	SCBCN13SXTTC027682
SCBCR13S2TC027972	SCBDN33S7TC027686	SCBCP2ZG4TC027874
SCBCU13S9TC027627	SCBDP4ZG0TC027936	SCBCR2ZG5TC027845
SCBDB33S3TC027855	SCBDP4ZG1TC027900	SCBCR2ZG8TC027774
SCBDM33S1TC027847	SCBDP4ZG5TC027902	SCBCU13S9TC027871
SCBDM33S4TC027888	SCBDP4ZG8TC027876	SCBDM33S5TC027818
SCBDM33S6TC027939	SCBDP4ZG9TC027921	SCBDM33S5TC027821
SCBDN3ZG0TC027435	SCBCB13S3TC027886	SCBDM33S6TC027780
SCBDP4ZG8TC027909	SCBCM13S1TC027878	SCBDM33S6TC027827
SCBDR33S7TC027823	SCBCN13S3TC027863	SCBDM33S9TC027868
SCBDR4ZG3TC027956	SCBCN13S4TC027869	SCBDN33S0TC027884
SCBDR4ZG9TC027928	SCBCN13S7TC027820	SCBDN33S5TC027864
SCBCB13S2TC027927	SCBCN13S7TC027879	SCBDN33S8TC027843
SCBCM13S2TC027842	SCBCN13S8TC027891	SCBDN33S9TC027852
SCBCN13S2TC027899	SCBCP2ZG7TC027903	SCBDN33SXTTC027861

SCBDP4ZGXTC027801	SCBCP2ZG8TC027778	SCBDN33S7TC027753
SCBCB13S1TC027787	SCBCU13S8TC027795	SCBDN33S7TC027770
SCBCB13S3TC027791	SCBDM33S4TC027745	SCBCB13S4TC027685
SCBCB13S4TC027816	SCBDM33SXTTC027653	SCBCB13S7TC027678
SCBCB13S9TC027830	SCBDN33S0TC027108	SCBCB13SXTTC027691
SCBCB13SXTTC027755	SCBDN33S6TC027789	SCBCG13SXTTC027739
SCBCG13S4TC027848	SCBDN33S8TC027793	SCBCM13S5TC027690
SCBCM13S5TC027737	SCBDN33S9TC027303	SCBCM13S5TC027740
SCBCN13S0TC027853	SCBDN3ZG3TC027784	SCBCN13S1TC027747
SCBCN13S2TC027742	SCBDR33S2TC027809	SCBCN13S4TC027693
SCBCN13S2TC027806	SCBDU33S4TC027776	SCBCN13S5TC027623
SCBCN13S4TC027838	SCBCB13S0TC027764	SCBCU13S1TC027590
SCBCN13S5TC027833	SCBCB13S3TC027743	SCBDM33S6TC027567
SCBCN13S6TC027811	SCBCB13S7TC027762	SCBDN33S9TC027608
SCBCN13S8TC027857	SCBCB13S8TC027768	SCBCB13S5TC027680
SCBDB33S9TC027813	SCBCB13S8TC027785	SCBCM13S1TC027282
SCBDM33S1TC027749	SCBCD13S2TC027467	SCBCM13S2TC027534
SCBDN33S3TC027832	SCBCM13S7TC027688	SCBCM13S2TC027677
SCBCB13S2TC027751	SCBCN13S0TC027772	SCBCM13S6TC027617
SCBCB13S2TC027782	SCBCN13S7TC027736	SCBCM13SXTTC027670
SCBCB13S2TC027796	SCBCN13S8TC027759	SCBCM13SXTTC027734
SCBCG13S3TC027730	SCBCN1ZG6TC027732	SCBCM1ZG4TC027568
SCBCM13S8TC027683	SCBDM33S2TC027761	SCBCN13S0TC027674
SCBCN13S5TC027752	SCBDM33S9TC027577	SCBCN13S1TC027666
SCBCN13S6TC027808	SCBDN33S0TC027741	SCBCN13S4TC027631
SCBCN13S7TC027803	SCBDN33S1TC027733	SCBCN13S5TC027654
SCBCN13S9TC027799	SCBDN33S3TC027765	SCBCN13S8TC027650
SCBCN1ZG0TC027581	SCBDN33S4TC027757	SCBCN13S9TC027673

SCBCN1ZG1TC027668	SCBDN33S2TC027644	SCBCB13S5TC027548
SCBCN1ZG1TC027735	SCBDN33S4TC027659	SCBCD13S3TC027560
SCBCR13S7TC027630	SCBDN33S5TC027640	SCBCM13S4TC027583
SCBDB33S4TC027234	SCBDR33SXTTC027671	SCBCM13S8TC027599
SCBDM33S0TC027676	SCBCJ13S5TC027620	SCBCM13SXTTC027569
SCBDM33S1TC027637	SCBCM13S2TC027615	SCBCM13SXTTC027586
SCBDM33S2TC027694	SCBCM13S3TC027638	SCBCM1ZG0TC027518
SCBDN33S0TC027612	SCBCM13S5TC027592	SCBCM1ZG8TC027573
SCBDN33S8TC027633	SCBCM13S5TC027642	SCBCN13S3TC027328
SCBCB13S1TC027594	SCBCM13S6TC027553	SCBCN13S5TC027606
SCBCB13S5TC027601	SCBCM13S7TC027643	SCBCN13S7TC027588
SCBCB13S7TC027664	SCBCM13S8TC027635	SCBCN1ZG4TC027602
SCBCB13S8TC027656	SCBCM13SXTTC027619	SCBCR2ZGXTTC027565
SCBCC13S6TC027622	SCBCM1ZG7TC027564	SCBCU13S7TC027609
SCBCM13S0TC027628	SCBCN13S0TC027576	SCBDB33S0TC027571
SCBCM13S0TC027662	SCBCN13S4TC027595	SCBDM33S9TC027191
SCBCM13S6TC027648	SCBCP2ZG2TC027498	SCBDN33S0TC027545
SCBCM13S6TC027651	SCBCU13S1TC027539	SCBDN33S0TC027559
SCBCM13S7TC027514	SCBCU13S2TC027646	SCBDP4ZG9TC027515
SCBCN13S0TC027657	SCBDM33S8TC027439	SCBDP4ZGXTTC027507
SCBCN13S3TC027636	SCBDM33S9TC027529	SCBDR4ZGXTTC027551
SCBCN13S4TC027614	SCBDN33S2TC027563	SCBCB13S2TC027572
SCBCN13S9TC027611	SCBDN33S6TC027579	SCBCB13S8TC027561
SCBCP2ZG8TC027506	SCBDN33S8TC027597	SCBCM13S0TC027516
SCBCR2ZG1TC027552	SCBDN3ZG0TC027483	SCBCM13S0TC027547
SCBCU13S3TC027557	SCBDP4ZG5TC027480	SCBCM13S1TC027556
SCBDM33S8TC027604	SCBDR4ZG0TC027574	SCBCN13S1TC027523
SCBDN33S1TC027585	SCBCB13S4TC027542	SCBCN13S6TC027520

SCBCN13S7TC027350	SCBDN33S6TC027503	SCBCM1ZG6TC027488
SCBCN13S9TC027429	SCBDP4ZG4TC027499	SCBCN13S2TC027319
SCBCN1ZGXTTC027538	SCBDP4ZGXTTC027443	SCBCN13S3TC027426
SCBCP2ZG4TC027535	SCBDP4ZGXTTC027541	SCBCR2ZG2TC027432
SCBDH33S0TC027522	SCBCB13S1TC027496	SCBCR2ZG4TC027478
SCBDM33S9TC027546	SCBCB13S9TC027326	SCBCR2ZG6TC027482
SCBDM33SXTTC027555	SCBCM13S0TC027502	SCBCU13S4TC027454
SCBDP4ZG1TC027511	SCBCM13S1TC027458	SCBDM33S1TC027153
SCBDP4ZG7TC027447	SCBCM13S2TC027484	SCBDM33S1TC027461
SCBCB13S2TC027524	SCBCM13S3TC027459	SCBDM33S2TC027453
SCBCB13S8TC027530	SCBCM13S7TC027500	SCBDM33S6TC027407
SCBCC13S5TC027322	SCBCP2ZG5TC027494	SCBDN33S0TC027450
SCBCM13S3TC027526	SCBCU13S2TC027470	SCBDN33S1TC027120
SCBCM13S3TC027543	SCBCU13S4TC027504	SCBDN33S2TC027465
SCBCM13S4TC027471	SCBDM33S3TC027476	SCBDN33S9TC027415
SCBCM13S4TC027549	SCBDM33S6TC027472	SCBDP4ZG3TC027431
SCBCM13S7TC027531	SCBDM33S8TC027487	SCBDP4ZG4TC027468
SCBCM13SXTTC027510	SCBDM33SXTTC027457	SCBCB13S1TC027451
SCBCM1ZG1TC027527	SCBDP4ZGXTTC027491	SCBCD13S3TC027445
SCBCN13S1TC027490	SCBCB13S1TC027479	SCBCJ13S3TC027440
SCBCN1ZG1TC027508	SCBCB13S4TC027492	SCBCM13S2TC027405
SCBCR2ZG0TC027512	SCBCB13S5TC027288	SCBCM13S2TC027436
SCBCR2ZG6TC027448	SCBCB13S9TC027441	SCBCM13S4TC027406
SCBCU13S1TC027475	SCBCM13S0TC027466	SCBCM13S4TC027423
SCBDC33S7TC027533	SCBCM13S5TC027463	SCBCM13S5TC027317
SCBDM33S6TC027519	SCBCM13S6TC027455	SCBCM1ZG7TC027449
SCBDM33S7TC027495	SCBCM13S6TC027486	SCBCN13S0TC027335
SCBDN33S1TC027537	SCBCM13SXTTC027474	SCBCN13S0TC027402

SCBCN13S0TC027416	SCBCB13S6TC027381	SCBCM13S4TC027356
SCBCN13S1TC027425	SCBCB13S9TC027309	SCBCM13S9TC027353
SCBCN13S2TC027403	SCBCB13S9TC027410	SCBCM13SXTC027359
SCBCN13S9TC027396	SCBCB13SXTC027366	SCBCM1ZG0TC027373
SCBCN1ZG1TC027444	SCBCJ13S7TC027375	SCBCM1ZG6TC027166
SCBCN1ZG3TC027462	SCBCM13S1TC027394	SCBCN13S2TC027367
SCBCN1ZG4TC027194	SCBCM13S5TC027379	SCBCN13S2TC027370
SCBCR2ZG4TC027433	SCBCM13S7TC027349	SCBCN13S5TC027332
SCBDM33S2TC027386	SCBCM13S7TC027397	SCBCN13S5TC027346
SCBDM33S3TC027400	SCBCM13S9TC027384	SCBCN13S7TC027347
SCBDN33S0TC027352	SCBCM13SXTC027362	SCBCU13S8TC027196
SCBDN3ZGXTTC027393	SCBCN13S3TC027409	SCBDM33S0TC027371
SCBDP4ZG1TC027251	SCBCN13S6TC027209	SCBDM33S8TC027344
SCBDP4ZG1TC027427	SCBCN13S9TC027382	SCBDN33S7TC027297
SCBCJ13S1TC027369	SCBCN13SXTC027388	SCBDR4ZG7TC027183
SCBCJ13SXTC027385	SCBCN13SXTC027391	SCBCB13S0TC027313
SCBCM13S0TC027399	SCBDH33S8TC027378	SCBCB13S3TC027340
SCBCM13S0TC027418	SCBDM33S0TC027242	SCBCB13S5TC027274
SCBCM13S2TC027422	SCBDM33SXTC027085	SCBCD13S9TC027286
SCBCM13S4TC027390	SCBDN33S1TC027330	SCBCG13S6TC027267
SCBCM13S4TC027437	SCBDN33S7TC027364	SCBCM13S1TC026827
SCBCM13SXTC027412	SCBDN3ZG8TC027358	SCBCM13S1TC027220
SCBCN13S1TC027361	SCBDP4ZG2TC027307	SCBCM13S2TC027291
SCBCN13S2TC027420	SCBCD13S9TC027272	SCBCM13S2TC027341
SCBCN13S5TC027315	SCBCJ13S1TC027355	SCBCM13S4TC027311
SCBCN13S5TC027413	SCBCJ1ZG5TC027295	SCBCM13S5TC027334
SCBCN13S7TC027428	SCBCM13S2TC027324	SCBCM1ZG5TC027126
SCBCB13S2TC027376	SCBCM13S2TC027338	SCBCN13SXTC027343

SCBCN1ZGXTC027250	SCBCP2ZG7TC027030	SCBCN13S9TC027205
SCBDM33S0TC027337	SCBCP2ZG9TC027028	SCBDJ33SXTTC027175
SCBDM33S4TC027261	SCBCU13S1TC027265	SCBDM33S6TC027164
SCBDM33S5TC027320	SCBDM33S2TC027128	SCBDM33SXTTC027104
SCBDN33S3TC027216	SCBDN33S2TC027207	SCBDN33S7TC027199
SCBCB13S8TC027284	SCBDP4ZG5TC026877	SCBDP4ZG0TC027113
SCBCB13SXTTC027187	SCBCB13S3TC027211	SCBDP4ZG3TC027168
SCBCB13SXTTC027304	SCBCB13S7TC027227	SCBDP4ZG4TC027180
SCBCM13S1TC027301	SCBCD13S8TC027215	SCBDP4ZG5TC026989
SCBCM13S4TC027244	SCBCJ13S1TC027257	SCBCB13S4TC027198
SCBCM13S6TC027293	SCBCM13S1TC027203	SCBCM13S0TC027189
SCBCM13S7TC027299	SCBCM13S5TC027236	SCBCM13S4TC027132
SCBCM13S9TC027269	SCBCM13S5TC027253	SCBCM13S5TC027155
SCBCN13S1TC027263	SCBCM13S7TC027240	SCBCM13S8TC027182
SCBCN13S2TC027305	SCBCM13S8TC027201	SCBCM1ZG0TC027177
SCBCN13S3TC027278	SCBCM13SXTTC027233	SCBCM1ZG3TC027173
SCBCN1ZG5TC027138	SCBCM1ZG2TC027178	SCBCM1ZG8TC027170
SCBCU13S6TC027276	SCBCN1ZG4TC027213	SCBCN13S7TC027185
SCBDM33S8TC027280	SCBDM33S3TC027221	SCBCN13S9TC027060
SCBDN33S9TC027270	SCBDM33S6TC027133	SCBCP2ZG8TC026985
SCBDP4ZG0TC027080	SCBDP4ZG0TC027046	SCBDM33S0TC027161
SCBDR4ZG2TC027172	SCBDP4ZG0TC027225	SCBDM33S9TC027157
SCBCB13S0TC027246	SCBDR4ZG1TC027146	SCBDP4ZG5TC027124
SCBCB13S1TC027238	SCBCB13SXTTC027223	SCBDR4ZG3TC027150
SCBCB13S4TC027248	SCBCM13S5TC027222	SCBCJ13S9TC027135
SCBCJ13S9TC027152	SCBCM13S6TC027231	SCBCM13S1TC027119
SCBCM13S9TC027255	SCBCN13S1TC027229	SCBCM13S2TC027159
SCBCN13SXTTC027259	SCBCN13S7TC027218	SCBCM13S2TC027162

SCBCM13S5TC027107	SCBCM13SXTC027099	SCBCM13S8TC027084
SCBCM1ZG4TC027148	SCBCM1ZG4TC027053	SCBCM13S9TC026624
SCBCM1ZG5TC027076	SCBCN13S1TC027005	SCBCM1ZG3TC027089
SCBCM1ZG7TC027063	SCBCN13S3TC026955	SCBCN13S8TC026983
SCBCN13S7TC027140	SCBCN13S5TC027041	SCBCN13S9TC026698
SCBCN13SXTC027102	SCBCN13S8TC027096	SCBCN1ZG3TC026621
SCBCN13SXTC027116	SCBCN13S9TC027110	SCBCP2ZG1TC026570
SCBCR2ZG8TC027015	SCBCP2ZG0TC026933	SCBCP2ZG2TC027078
SCBDM33S0TC026348	SCBCP2ZG1TC026777	SCBCP2ZG3TC026876
SCBDM33S3TC027137	SCBCP2ZG4TC026868	SCBCP2ZG3TC026974
SCBDM33S5TC027088	SCBCR2ZG9TC027069	SCBCP2ZG3TC027008
SCBDM33S7TC027075	SCBCU13S1TC027122	SCBCP2ZG6TC026970
SCBDM3ZG1TC027091	SCBDM33S2TC027064	SCBCR2ZG2TC027074
SCBDN33S1TC027117	SCBDM33S6TC027097	SCBCR2ZG4TC027013
SCBDN33S4TC027144	SCBDN33SXTC027049	SCBCR2ZG5TC026811
SCBDP4ZG0TC027130	SCBDP4ZG4TC027082	SCBDP4ZG1TC027010
SCBDP4ZG5TC027141	SCBDP4ZG7TC026864	SCBDP4ZG7TC026900
SCBCM13S1TC027105	SCBDP4ZG7TC027058	SCBDP4ZG8TC027067
SCBCM13S3TC027039	SCBDP4ZGXTC027071	SCBDR4ZG1TC026921
SCBCM13S7TC027142	SCBDR4ZG1TC027101	SCBDR4ZG4TC026993
SCBCN13S7TC027087	SCBDR4ZG3TC027004	SCBDR4ZG4TC027061
SCBDN33S4TC027094	SCBDR4ZG7TC026910	SCBCM13S2TC027050
SCBDP4ZG4TC026952	SCBCD13S1TC026987	SCBCM13S8TC027036
SCBDP4ZG5TC026913	SCBCM13S1TC027072	SCBCM1ZG1TC027057
SCBCM13S1TC026648	SCBCM13S2TC027081	SCBCN13S8TC027051
SCBCM13S6TC026922	SCBCM13S3TC027042	SCBCP2ZG2TC027016
SCBCM13S6TC027066	SCBCM13S7TC026962	SCBCP2ZG4TC026997
SCBCM13S7TC027092	SCBCM13S8TC026923	SCBCP2ZG5TC027026

SCBCP2ZG9TC026851	SCBCP2ZG4TC027003	SCBCP2ZG8TC026971
SCBCU13S5TC027012	SCBCP2ZG5TC026992	SCBCR23S1TC026883
SCBDB33S6TC026568	SCBCP2ZG6TC026550	SCBDP4ZG3TC026943
SCBDM33S1TC027055	SCBCP2ZG7TC026945	SCBDP4ZG9TC026591
SCBDM33S7TC027044	SCBCP2ZG8TC026999	SCBCM1ZG9TC026948
SCBDN33S5TC026956	SCBCP2ZG9TC026994	SCBCN13S4TC026902
SCBDN33SXTTC027021	SCBCP2ZG9TC027000	SCBCN13S6TC026870
SCBDP4ZG0TC026978	SCBCP2ZG9TC027031	SCBCN13S6TC026979
SCBDP4ZG0TC027032	SCBCR13S1TC026960	SCBCP2ZG1TC026942
SCBDP4ZG1TC027038	SCBCR2ZG0TC026862	SCBCP2ZG3TC026926
SCBDP4ZG2TC026917	SCBCR2ZG0TC027011	SCBCP2ZG4TC026949
SCBDP4ZG3TC027025	SCBCR2ZG5TC026873	SCBCP2ZG6TC026905
SCBDP4ZG6TC026936	SCBCR2ZG5TC026940	SCBCP2ZG7TC026976
SCBDP4ZG6TC027052	SCBDN33S3TC026986	SCBCP2ZG8TC026937
SCBDP4ZG8TC026954	SCBDP4ZG0TC026897	SCBCP2ZG9TC026980
SCBDR4ZG7TC026969	SCBDP4ZG1TC026925	SCBCP2ZGXTTC026972
SCBCM13S3TC026909	SCBDP4ZG1TC026939	SCBCR13S1TC026912
SCBCM13S7TC026105	SCBDP4ZG2TC026996	SCBCR2ZG6TC026963
SCBCM13S8TC026968	SCBDP4ZG3TC026991	SCBCR2ZG7TC025272
SCBCM13S8TC027019	SCBDP4ZG4TC027034	SCBCU13S5TC026930
SCBCM13SXTTC026695	SCBDP4ZG7TC026959	SCBDP4ZG2TC026819
SCBCN13S7TC026957	SCBDP4ZG8TC026856	SCBDP4ZG3TC026814
SCBCN13SXTTC027018	SCBDP4ZGXTTC027006	SCBDP4ZG5TC026958
SCBCN1ZGXTTC027023	SCBDR4ZG0TC026988	SCBDP4ZG6TC026399
SCBCP2ZG0TC027001	SCBDR4ZG1TC026840	SCBDP4ZG6TC026872
SCBCP2ZG1TC026844	SCBDR4ZG5TC026890	SCBDP4ZG8TC026842
SCBCP2ZG2TC026951	SCBDR4ZGXTTC026965	SCBDP4ZG9TC026932
SCBCP2ZG4TC026904	SCBDR4ZGXTTC026982	SCBDR33S9TC026964

SCBCB13S4TC026908	SCBCN13S5TC026861	SCBCM13S4TC026773
SCBCH13S0TC026855	SCBCN13S6TC026898	SCBCM13S7TC026847
SCBCM13S1TC026813	SCBCN13S9TC026345	SCBCM13SXTC026213
SCBCM13S3TC026747	SCBCP2ZG0TC026866	SCBCN13S0TC026766
SCBCM13S9TC026879	SCBCP2ZG1TC026858	SCBCN13S0TC026816
SCBCM13SXTC026891	SCBCP2ZG3TC026487	SCBCN13S1TC025982
SCBCP2ZG3TC026859	SCBCP2ZG8TC026422	SCBCN13S1TC026095
SCBCP2ZG4TC026935	SCBCP2ZG9TC026770	SCBCN13S1TC026839
SCBCP2ZG5TC026894	SCBCP2ZG9TC026848	SCBCP2ZG0TC026821
SCBCP2ZG9TC026915	SCBCP2ZG9TC026865	SCBCP2ZG2TC026786
SCBCP2ZG9TC026946	SCBCP2ZGXTTC026874	SCBCP2ZG3TC026828
SCBCR13S7TC026882	SCBCR2ZG9TC026889	SCBCP2ZG4TC026837
SCBCR2ZG4TC026928	SCBCU13S8TC026887	SCBCP2ZG8TC026808
SCBCR2ZG5TC026906	SCBDP4ZG0TC026236	SCBCR2ZG0TC026800
SCBDM33S8TC026372	SCBDP4ZG1TC026696	SCBDM33SXTC026633
SCBDP4ZG1TC026875	SCBDP4ZG2TC026836	SCBDP4ZG0TC026804
SCBDP4ZG3TC026845	SCBDP4ZG2TC026853	SCBDP4ZG1TC026794
SCBDP4ZG5TC026880	SCBDP4ZG2TC026867	SCBDP4ZG2TC026822
SCBDP4ZG6TC026919	SCBDP4ZG3TC026537	SCBDP4ZG6TC026189
SCBDP4ZG8TC026789	SCBDP4ZG6TC026886	SCBDP4ZG6TC026810
SCBDP4ZG9TC026929	SCBDP4ZG7TC026850	SCBDP4ZG7TC026749
SCBDR4ZG3TC026869	SCBDR4ZG1TC026692	SCBDP4ZG8TC026825
SCBDR4ZG4TC026833	SCBDR4ZG2TC026782	SCBDP4ZG9TC026798
SCBCM13S2TC026884	SCBDR4ZG3TC026581	SCBDR4ZG1TC026806
SCBCM13S4TC025963	SCBDR4ZG9TC026892	SCBCM13S0TC026835
SCBCM13S7TC026895	SCBCB13S4TC026701	SCBCM13S3TC026098
SCBCM1ZG0TC026708	SCBCG13SXTTC026316	SCBCM13S5TC026832
SCBCN13S2TC026803	SCBCM13S0TC026818	SCBCM13S6TC026791

SCBCM13S8TC026792	SCBCP2ZG8TC026744	SCBCP2ZG0TC026611
SCBCN13S1TC026274	SCBCP2ZG9TC026736	SCBCP2ZG0TC026690
SCBCN13S2TC026638	SCBCP2ZGXTTC026731	SCBCP2ZG0TC026723
SCBCP2ZG2TC026805	SCBCU13S1TC026780	SCBCP2ZG0TC026754
SCBCP2ZG6TC026757	SCBDM33S8TC026369	SCBCP2ZG4TC026739
SCBCP2ZG6TC026760	SCBDM3ZG5TC026722	SCBCP2ZG5TC026720
SCBCP2ZG6TC026824	SCBDP43S3TC026714	SCBCP2ZG6TC026726
SCBDM33S6TC026466	SCBDP4ZG2TC026755	SCBCP2ZG8TC026758
SCBDM33S9TC025960	SCBDP4ZG5TC026765	SCBCR2ZG6TC025814
SCBDP4ZG1TC026830	SCBDP4ZG6TC026483	SCBCU13S2TC026318
SCBDP4ZG2TC026772	SCBDP4ZG7TC026735	SCBDJ33S9TC026017
SCBDP4ZG5TC026779	SCBDP4ZG8TC026694	SCBDM33S7TC026640
SCBDP4ZG7TC026752	SCBDP4ZG8TC026775	SCBDN33S7TC026666
SCBDP4ZG7TC026802	SCBDP4ZGXTTC026745	SCBDP4ZG2TC026710
SCBDP4ZG9TC026784	SCBDR4ZG6TC026266	SCBDP4ZG2TC026741
SCBDP4ZGXTTC026504	SCBDR4ZG9TC026620	SCBDP4ZG2TC026769
SCBDR4ZG0TC026313	SCBDR4ZGXTTC026738	SCBDP4ZG5TC026670
SCBDR4ZG7TC026762	SCBCJ13S6TC026332	SCBDP4ZG7TC026282
SCBCD13S3TC026764	SCBCM13S1TC026603	SCBDP4ZG8TC026730
SCBCM13S3TC026795	SCBCM13S3TC026733	SCBDP4ZG9TC026655
SCBCN13S8TC026272	SCBCM13S4TC026305	SCBDP4ZGXTTC026647
SCBCN13S8TC026658	SCBCM13S4TC026742	SCBDR4ZG1TC026725
SCBCN13S9TC026524	SCBCM13S8TC026713	SCBDR4ZG7TC026728
SCBCN13S9TC026751	SCBCM13SXTTC026664	SCBCM13S2TC026562
SCBCN13SXTTC026662	SCBCN13S2TC026610	SCBCM13S3TC026716
SCBCN13SXTTC026788	SCBCN13S3TC025899	SCBCM13S6TC026645
SCBCP2ZG0TC026768	SCBCN13S7TC026697	SCBCM13S7TC026704
SCBCP2ZG5TC026796	SCBCN1ZG2TC026657	SCBCM1ZG0TC026711

SCBCM1ZG6TC026616	SCBCM13S5TC026555	SCBCP2ZG9TC026557
SCBCN13S5TC026651	SCBCM13S7TC026668	SCBDM33S0TC026608
SCBCN13S6TC026688	SCBCM13S8TC026677	SCBDM33S6TC026595
SCBCN13S7TC025341	SCBCN13S1TC026467	SCBDM33S8TC026565
SCBCN13S7TC026683	SCBCN13S2TC026588	SCBDP4ZG6TC026516
SCBCP2ZG2TC026660	SCBCN13S2TC026672	SCBDP4ZG6TC026628
SCBCP2ZG5TC026717	SCBCN13S4TC026043	SCBDP4ZG7TC026637
SCBCP2ZG7TC026654	SCBCN13S4TC026575	SCBDR4ZG8TC026589
SCBCP2ZG7TC026685	SCBCN13S8TC026675	SCBCM13S2TC026576
SCBCU13S7TC026606	SCBCP2ZG3TC026635	SCBCM13S3TC026585
SCBDN33S2TC026641	SCBCR2ZG1TC026126	SCBCM13S6TC026578
SCBDP4ZG0TC026687	SCBDM33S5TC025843	SCBCM1ZG5TC026543
SCBDP4ZG0TC026706	SCBDN33S0TC026492	SCBCN13S1TC026193
SCBDP4ZG1TC026682	SCBDP4ZG1TC026407	SCBCN13S2TC026560
SCBDP4ZG3TC026652	SCBDP4ZG1TC026617	SCBCN13S3TC026454
SCBDP4ZG5TC026541	SCBDP4ZG2TC026674	SCBCP2ZG5TC026622
SCBDP4ZG5TC026703	SCBDP4ZG3TC026473	SCBCP2ZGXTTC026602
SCBDP4ZG6TC026600	SCBDP4ZG5TC026586	SCBCR2ZG7TC026521
SCBDP4ZG6TC026659	SCBDP4ZG5TC026605	SCBDB33S7TC026384
SCBDR4ZG6TC026719	SCBDP4ZG6TC026614	SCBDM33S9TC026333
SCBDR4ZG7TC026678	SCBDP4ZG8TC026632	SCBDM33SXTTC026597
SCBDR4ZG7TC026700	SCBDP4ZG8TC026663	SCBDN33S4TC026513
SCBCB13S0TC026680	SCBDR4ZG4TC026296	SCBDN33S4TC026558
SCBCM13S1TC026231	SCBCM1ZG0TC026613	SCBDN33S7TC026554
SCBCM13S1TC026519	SCBCN13S5TC026598	SCBDN33S8TC026403
SCBCM13S2TC026626	SCBCN13S6TC026643	SCBDN33S8TC026577
SCBCM13S3TC026618	SCBCN13S8TC026515	SCBDP4ZG0TC026527
SCBCM13S4TC026630	SCBCP2ZG2TC026593	SCBDP4ZG2TC026447

SCBDP4ZG4TC026109	SCBDR4ZG9TC026469	SCBCM13S3TC026375
SCBDP4ZG6TC025947	SCBCB13S8TC026457	SCBCM13S4TC026434
SCBDP4ZG7TC026573	SCBCH13S1TC025875	SCBCM13S8TC026503
SCBDP4ZG8TC026579	SCBCJ13S8TC026509	SCBCM13S9TC026459
SCBDP4ZG8TC026582	SCBCM13S0TC026494	SCBCM1ZG6TC026339
SCBDR4ZG2TC026507	SCBCM13S1TC026536	SCBCN13S1TC026484
SCBCM13S2TC026464	SCBCM13S2TC026478	SCBCN13S8TC026482
SCBCM13S3TC026540	SCBCM13S7TC026475	SCBCN13S9TC026412
SCBCM13S4TC026546	SCBCN13S2TC026512	SCBCP2ZG1TC026018
SCBCN13S2TC026431	SCBCN13S2TC026526	SCBCP2ZG1TC026472
SCBCN13S8TC026532	SCBCN13S7TC026506	SCBCP2ZG5TC026491
SCBCN13S9TC026359	SCBCN13S8TC026370	SCBCP2ZG9TC026364
SCBCN13S9TC026538	SCBCN13S8TC026465	SCBCP2ZG9TC026400
SCBCP2ZG3TC026571	SCBCN13S8TC026529	SCBCR2ZG8TC026379
SCBCR2ZGXTTC026500	SCBCN13SXTTC026354	SCBCU13S7TC026461
SCBDN33S1TC026257	SCBCN13SXTTC026497	SCBDB33S3TC026186
SCBDN33S7TC026358	SCBCP2ZG6TC026306	SCBDM33S0TC026303
SCBDP4ZG0TC026432	SCBCP2ZG8TC026517	SCBDM33S7TC026251
SCBDP4ZG0TC026477	SCBDB33S7TC026238	SCBDM33S8TC026498
SCBDP4ZG1TC026438	SCBDM33S0TC026544	SCBDN33S0TC026427
SCBDP4ZG1TC026455	SCBDN33S4TC026530	SCBDP4ZG7TC026489
SCBDP4ZG1TC026486	SCBDP4ZG4TC026501	SCBDR4ZG1TC026451
SCBDP4ZG2TC026495	SCBDP4ZG5TC026510	SCBCM13S6TC026449
SCBDP4ZG3TC026523	SCBDP4ZG6TC026435	SCBCR2ZG3TC026452
SCBDP4ZG7TC026430	SCBDP4ZG8TC026534	SCBCN13S7TC026389
SCBDP4ZG7TC026444	SCBDP4ZGXTTC026552	SCBCN13S7TC026442
SCBDP4ZG8TC026520	SCBDR4ZG8TC026480	SCBDM33S7TC026377
SCBDR4ZG5TC026548	SCBCM13S2TC026335	SCBDM3ZG8TC026360

SCBDN33S2TC026462	SCBDP4ZG1TC026343	SCBCN13S8TC026255
SCBDR4ZG4TC026136	SCBDP4ZG1TC026410	SCBCP2ZGXTTC026311
SCBCB13S7TC026367	SCBDP4ZG3TC026425	SCBCR2ZG3TC026323
SCBCJ13S3TC026417	SCBDP4ZG5TC026314	SCBDH33S7TC025590
SCBCN13S3TC026437	SCBDR4ZG9TC026388	SCBDM33S4TC026353
SCBCN13S3TC026440	SCBDR4ZG9TC026391	SCBDM33S5TC026233
SCBCN1ZG6TC026337	SCBDU33SXTTC026406	SCBDM33S9TC026235
SCBCP2ZG5TC026295	SCBCM13S8TC026341	SCBDM33SXTTC026227
SCBCP2ZG8TC026386	SCBCM13S9TC026039	SCBDN33S4TC026320
SCBCR13S6TC026470	SCBCN13S7TC026280	SCBDN3ZG9TC026042
SCBDM33S9TC026414	SCBCN13S9TC026409	SCBDP4ZG2TC026271
SCBDM3ZG6TC026325	SCBCN1ZG0TC026396	SCBDP4ZG7TC026329
SCBDN33S4TC026382	SCBCP2ZG3TC026392	SCBDP4ZGXTTC026356
SCBDP4ZG1TC026441	SCBCR2ZG0TC026361	SCBDR4ZG7TC026308
SCBDP4ZG2TC026416	SCBCR2ZG7TC026289	SCBDR4ZG9TC026262
SCBDP4ZG8TC026419	SCBDM33S8TC026209	SCBCB13S5TC025654
SCBCM13S1TC026424	SCBDN33S3TC026373	SCBCM13S2TC026030
SCBCM13S9TC026350	SCBDN33S6TC026299	SCBCM13S2TC026285
SCBCM13S9TC026428	SCBDP4ZG4TC026336	SCBCM13S3TC026277
SCBCM1ZG3TC026380	SCBDP4ZG7TC026363	SCBCM13S4TC026322
SCBCN13S1TC026405	SCBDP4ZG8TC026291	SCBCM13S7TC026007
SCBCP2ZG3TC026330	SCBCJ13SXTTC026270	SCBCN13S0TC026301
SCBCP2ZG4TC026420	SCBCM13S0TC026351	SCBCN13S1TC026260
SCBCP2ZG7TC026394	SCBCM1ZG1TC025891	SCBCP2ZG0TC026298
SCBDM33S0TC026401	SCBCN13S0TC026346	SCBCP2ZG3TC026246
SCBDM33S2TC026366	SCBCN13S6TC026223	SCBCR2ZG5TC026310
SCBDM33S7TC025746	SCBCN13S7TC026117	SCBDN33S9TC026278
SCBDN33S7TC025677	SCBCN13S7TC026327	SCBDP4ZG0TC026284

SCBDP4ZG1TC026245	SCBCP2ZG2TC026240	SCBDM33SXTC026132
SCBDP4ZG4TC026286	SCBCP2ZG6TC026225	SCBDN33S2TC026221
SCBDP4ZG7TC026198	SCBCP2ZG8TC026243	SCBDN33S6TC026190
SCBDP4ZG7TC026248	SCBCR13S4TC025902	SCBDP4ZG5TC026118
SCBDP4ZG8TC026288	SCBCU13S1TC026228	SCBDP4ZG7TC025973
SCBDP4ZG9TC026218	SCBDM33S4TC026207	SCBDP4ZG8TC026047
SCBDR4ZG3TC026340	SCBDM3ZGXTTC026022	SCBDP4ZG8TC026176
SCBCB13S8TC026264	SCBDN33S2TC026168	SCBDP4ZGXTTC025580
SCBCB13S9TC025589	SCBDN33S7TC026179	SCBDR4ZG1TC026112
SCBCB13SXTTC026153	SCBDP4ZG3TC026151	SCBDR4ZG6TC026171
SCBCM13S1TC026293	SCBDP4ZG9TC026204	SCBDR4ZG8TC026138
SCBCM13S2TC026268	SCBDP4ZGXTTC026230	SCBDR4ZG9TC026164
SCBCM13S5TC026250	SCBCD13S7TC026184	SCBCB13S2TC025188
SCBCM13S9TC026283	SCBCM13S0TC025586	SCBCJ13S5TC026130
SCBCM1ZG4TC026131	SCBCM13S0TC026219	SCBCM13S0TC026060
SCBCN13S6TC025850	SCBCM13S5TC026149	SCBCM13S0TC026169
SCBCP2ZG2TC026142	SCBCM13S5TC026202	SCBCM13S2TC026173
SCBCP2ZG6TC026242	SCBCM1ZG1TC026216	SCBCM13S3TC026148
SCBCP2ZG6TC026287	SCBCM1ZGXTTC026201	SCBCM13S4TC026160
SCBDM33S9TC026252	SCBCN13S3TC026096	SCBCM13S4TC026174
SCBCJ13S3TC026188	SCBCN13S5TC026195	SCBCM13S5TC026166
SCBCM13S2TC026206	SCBCN13S9TC026183	SCBCN13S0TC025598
SCBCM13SXTTC026163	SCBCN13SXTTC026211	SCBCN13S1TC026162
SCBCN13S6TC026187	SCBCN1ZG8TC025951	SCBCN13S3TC026177
SCBCN1ZG7TC026234	SCBCP2ZG0TC025992	SCBCN13S8TC026157
SCBCP2ZG0TC026253	SCBCR2ZG6TC026199	SCBCN1ZG0TC026172
SCBCP2ZG1TC026181	SCBCR2ZG9TC026214	SCBCP2ZG6TC026127
SCBCP2ZG1TC026259	SCBCU13SXTTC026034	SCBCR13S4TC026144

SCBCR2ZG4TC026122	SCBCU13S8TC026100	SCBDP4ZGXTTC026082
SCBCU13S2TC026139	SCBDM33S6TC025771	SCBDR4ZG5TC025920
SCBCU13S9TC025750	SCBDM33S6TC026094	SCBCM13S0TC026026
SCBDM33S4TC026059	SCBDM33S7TC026038	SCBCM13S1TC026066
SCBDP4ZG0TC026141	SCBDP4ZG0TC026091	SCBCM13S3TC025954
SCBDP4ZG3TC026036	SCBDP4ZG3TC026053	SCBCM13S4TC025977
SCBDP4ZG3TC026134	SCBDP4ZG4TC025929	SCBCM13S6TC026063
SCBDR4ZG5TC026159	SCBDP4ZG4TC026031	SCBCM13S6TC026080
SCBDR4ZG6TC026106	SCBDP4ZG4TC026143	SCBCN13S0TC026041
SCBDR4ZG8TC026155	SCBDP4ZG5TC026040	SCBCN13S0TC026072
SCBCM13S1TC026083	SCBDP4ZG5TC026068	SCBCN13S4TC026009
SCBCM13S3TC026103	SCBDP4ZG9TC025327	SCBCN13S5TC026049
SCBCM13S5TC025485	SCBDP4ZGXTTC026129	SCBCN13S6TC026061
SCBCM13S5TC026135	SCBCM1ZG6TC026115	SCBCN1ZG6TC026077
SCBCM13S6TC025995	SCBDP4ZGXTTC026101	SCBCP2ZG0TC026074
SCBCM13S7TC026055	SCBCM13S0TC026088	SCBCP2ZG4TC026093
SCBCM13S8TC025903	SCBCM13S5TC026121	SCBCP2ZG5TC025986
SCBCM13SXTTC025997	SCBCM13S7TC025584	SCBCP2ZG9TC026090
SCBCM13SXTTC026146	SCBCN13S0TC026010	SCBDM33S4TC026028
SCBCN13S7TC026019	SCBCN13S6TC025931	SCBDM33S8TC026064
SCBCN13S9TC026071	SCBCP2ZG0TC026012	SCBDP4ZG0TC025927
SCBCN1ZG0TC026124	SCBCP2ZG0TC026057	SCBDP4ZG4TC025722
SCBCP2ZG0TC025801	SCBCP2ZG2TC026108	SCBDP4ZG9TC026056
SCBCP2ZG9TC026087	SCBCP2ZG3TC026120	SCBDP4ZGXTTC026079
SCBCR2ZG5TC026114	SCBDC33S9TC026013	SCBDR4ZG7TC026020
SCBCU13S2TC026111	SCBDM33S5TC026085	SCBCB13S5TC025752
SCBCU13S7TC025942	SCBDN33S8TC026076	SCBCM13S2TC025976
SCBCU13S7TC026069	SCBDP4ZG5TC025776	SCBCM13S3TC025968

SCBCM13S6TC026046	SCBCN13S4TC025958	SCBCM13S9TC025716
SCBCM13S8TC026002	SCBCN13S6TC025864	SCBCM1ZG4TC025772
SCBCM13SXTTC025871	SCBCN13S6TC025945	SCBCM1ZG7TC025880
SCBCN13S0TC026024	SCBCN13S6TC025962	SCBCN13S4TC025376
SCBCN13S1TC025934	SCBCP2ZG7TC025794	SCBCN13S5TC025905
SCBCN13S1TC026033	SCBCP2ZG9TC025957	SCBCN13S9TC025938
SCBCN13S5TC026052	SCBCR2ZG0TC025923	SCBCP2ZG0TC025913
SCBCN13S7TC025839	SCBCR2ZG9TC025872	SCBCP2ZG0TC025961
SCBCP2ZG1TC026004	SCBCU13S9TC025988	SCBCR2ZG1TC025834
SCBCP2ZG5TC026037	SCBDG33S9TC025559	SCBCR2ZG1TC025915
SCBCP2ZG6TC025737	SCBDM33S1TC025953	SCBCR2ZG3TC025835
SCBCP2ZG6TC026015	SCBDM33S5TC025924	SCBCR2ZG6TC025926
SCBCP2ZG8TC026050	SCBDN33S1TC025884	SCBCU13S5TC025955
SCBCR2ZG5TC025979	SCBDN33S4TC025622	SCBCU13S5TC025969
SCBCR2ZGXTTC026027	SCBDN33S4TC025975	SCBCU13S6TC025785
SCBCR2ZGXTTC026044	SCBDP4ZG1TC025936	SCBCU13S6TC025964
SCBCU13S4TC025980	SCBDP4ZG6TC026001	SCBCU13SXTTC025949
SCBDN33SXTTC025978	SCBDP4ZG7TC025682	SCBDB33S8TC025017
SCBDP4ZG3TC025999	SCBDP4ZGXTTC025742	SCBDN33S0TC025732
SCBDP4ZG4TC025896	SCBDR4ZG0TC026005	SCBDN33S4TC025863
SCBDP4ZG4TC025994	SCBDR4ZG8TC025944	SCBDP4ZG2TC025833
SCBDP4ZG8TC025870	SCBDR4ZG9TC025970	SCBDP4ZG2TC025881
SCBDR4ZG2TC025972	SCBCM13S0TC025894	SCBDP4ZG2TC025900
SCBDR4ZGXTTC025878	SCBCM13S1TC025869	SCBDP4ZG3TC025890
SCBCC13S3TC025990	SCBCM13S1TC025919	SCBDP4ZG5TC025874
SCBCJ13S0TC025984	SCBCM13S1TC025922	SCBDP4ZG5TC025910
SCBCM13S4TC026000	SCBCM13S6TC025866	SCBDP4ZG6TC025950
SCBCM1ZGXTTC025937	SCBCM13S8TC025769	SCBDP4ZG8TC025867

SCBDP4ZG8TC025917	SCBCN13S9TC025888	SCBDP4ZG2TC025718
SCBDP4ZGXTTC025966	SCBCN13SXTTC025883	SCBDP4ZG2TC025847
SCBDR43S1TC025815	SCBCP2ZG4TC025820	SCBDP4ZG3TC025856
SCBCH13S3TC025912	SCBCP2ZG7TC025651	SCBDP4ZG6TC025818
SCBCM13S0TC025748	SCBCU13S8TC025898	SCBDP4ZG8TC025836
SCBCM13S1TC025886	SCBCU13S9TC025876	SCBDR4ZG0TC025792
SCBCM13S3TC025906	SCBDN33S2TC025845	SCBDR4ZG8TC025782
SCBCM13S4TC025882	SCBDP4ZG9TC025859	SCBCB13S8TC025809
SCBCM13S6TC025821	SCBDP4ZGXTTC025904	SCBCB13SXTTC025777
SCBCM13S7TC025908	SCBCB13S6TC025825	SCBCD13SXTTC025823
SCBCM1ZG2TC025706	SCBCB13SXTTC025813	SCBCM13S3TC025744
SCBCM1ZG2TC025916	SCBCM13S4TC025798	SCBCM13S7TC025715
SCBCN13S4TC025930	SCBCM13S5TC025602	SCBCM13S7TC025830
SCBCP2ZG0TC025846	SCBCM13S8TC025741	SCBCM13SXTTC025790
SCBCP2ZG4TC025848	SCBCM13S9TC025067	SCBCN13S0TC025844
SCBCP2ZG5TC025941	SCBCM13SXTTC025854	SCBCN13S3TC025403
SCBCR2ZG6TC025909	SCBCN13S3TC025840	SCBCN13S5TC025676
SCBDN33SXTTC025849	SCBCN13S3TC025868	SCBCP2ZG0TC025605
SCBDP4ZG2TC025587	SCBCP2ZG4TC025851	SCBCP2ZG1TC025824
SCBDP4ZG3TC025940	SCBCP2ZG7TC025858	SCBCP2ZG3TC025842
SCBDP4ZG4TC025767	SCBCP2ZG7TC025861	SCBCP2ZG5TC025812
SCBDP4ZG4TC025932	SCBCP2ZG8TC025691	SCBCP2ZG7TC025827
SCBCB13S2TC025806	SCBCP2ZG8TC025805	SCBCP2ZG9TC025831
SCBCB13S9TC025382	SCBCP2ZG8TC025853	SCBCP2ZGXTTC025787
SCBCM13S4TC025817	SCBCR2ZG2TC025857	SCBCR13S0TC025802
SCBCM13S4TC025879	SCBDM33S7TC025438	SCBCU13S2TC025797
SCBCM13S7TC025505	SCBDM33S8TC025822	SCBDC33S6TC025160
SCBCN13S2TC025893	SCBDM3ZG8TC025760	SCBDM33S0TC025796

SCBDM33S5TC025390	SCBCP2ZG4TC025249	SCBCB13S0TC025612
SCBDM33S9TC025800	SCBCP2ZG5TC025745	SCBCB13S1TC025702
SCBDM3ZG8TC025838	SCBCU13S0TC025717	SCBCB13S7TC025705
SCBDN33S1TC025710	SCBCU13SXTTC025711	SCBCB13S9TC025690
SCBDN33S3TC025756	SCBDP4ZG1TC025693	SCBCC13S8TC025130
SCBDP4ZG0TC025829	SCBDP4ZG1TC025810	SCBCD13S4TC025686
SCBDP4ZG3TC025596	SCBDP4ZG4TC025445	SCBCH13S1TC025701
SCBDP4ZG6TC025804	SCBDP4ZG5TC025728	SCBCM13S0TC025684
SCBCB13S1TC025778	SCBDP4ZG6TC025575	SCBCM13S6TC025723
SCBCB13S2TC025725	SCBDP4ZG8TC025688	SCBCM13S9TC025666
SCBCB13S6TC025758	SCBDR4ZG9TC025788	SCBCM13SXTTC025708
SCBCB13S6TC025761	SCBCB13S2TC025658	SCBCM1ZG3TC025679
SCBCB13S8TC025762	SCBCB13S8TC025695	SCBCN13S5TC025323
SCBCM13S0TC025698	SCBCM13S0TC025720	SCBCN13S8TC025364
SCBCM13S1TC025709	SCBCM13S3TC025775	SCBCN13SXTTC025687
SCBCM13S1TC025757	SCBCM13S7TC025729	SCBCN13SXTTC025740
SCBCM13S3TC025808	SCBCM1ZG4TC025755	SCBCP2ZG0TC025670
SCBCM13S4TC025784	SCBCM1ZGXTTC025646	SCBCP2ZG1TC025712
SCBCM13S8TC025738	SCBCN13S0TC025780	SCBCP2ZG2TC025668
SCBCM13S9TC025697	SCBCN13S7TC025730	SCBCR2ZG1TC025719
SCBCN13S2TC025764	SCBCP2ZG6TC025673	SCBCU13S9TC025733
SCBCN13S2TC025781	SCBCP2ZG6TC025768	SCBDM33S4TC025672
SCBCN13S4TC025734	SCBDM33SXTTC025644	SCBDN33S0TC024810
SCBCN13S5TC025726	SCBDP4ZG2TC025699	SCBDN33S2TC025599
SCBCN13S7TC025467	SCBDP4ZG3TC025632	SCBDP4ZG3TC025629
SCBCN13S8TC025753	SCBDP4ZG5TC025714	SCBDP4ZG4TC025736
SCBCP2ZG0TC025765	SCBDP4ZG7TC025648	SCBCB13S1TC025618
SCBCP2ZG1TC025774	SCBDR4ZGXTTC025704	SCBCD13S7TC025620

SCBCJ13S7TC025643	SCBCB13S4TC025631	SCBDP4ZG3TC025405
SCBCM13S2TC025637	SCBCB13S5TC025556	SCBDP4ZG6TC025639
SCBCM1ZGXTTC025680	SCBCB13S7TC025509	SCBDP4ZG7TC025603
SCBCN13S0TC025519	SCBCB13S8TC025616	SCBDR4ZG1TC025607
SCBCN13S9TC025664	SCBCB13S9TC025334	SCBDR4ZG3TC025625
SCBCP2ZG0TC025667	SCBCM13S4TC025641	SCBCB13S3TC025457
SCBCP2ZG3TC025694	SCBCM13S5TC025650	SCBCB13S4TC025595
SCBCP2ZG4TC025297	SCBCM13SXTTC025563	SCBCB13S7TC025560
SCBCP2ZG4TC025462	SCBCM13SXTTC025630	SCBCM13S1TC025564
SCBCP2ZG4TC025638	SCBCM1ZG6TC025210	SCBCM13S1TC025581
SCBCP2ZG6TC025494	SCBCN13S1TC025626	SCBCM13S2TC025203
SCBCP2ZG6TC025611	SCBCN13S3TC025577	SCBCM13S2TC025606
SCBCP2ZG8TC025660	SCBCN13S7TC025615	SCBCM13S3TC025579
SCBCP2ZGXTTC025661	SCBCN13S8TC025591	SCBCM13S5TC025356
SCBCP2ZGXTTC025675	SCBCP2ZG5TC025647	SCBCM13S7TC025567
SCBCU13S1TC025354	SCBCP2ZG6TC025592	SCBCM13S8TC025187
SCBCU13S8TC025657	SCBCP2ZG6TC025608	SCBCM13S8TC025576
SCBDM33S3TC025663	SCBCP2ZG7TC025634	SCBCN13S4TC025507
SCBDM33S5TC025583	SCBCP2ZG9TC025585	SCBCN13S7TC024433
SCBDM33S8TC025609	SCBCP2ZGXTTC025627	SCBCN13S7TC025582
SCBDN33S2TC025652	SCBCU13S3TC025601	SCBCN13S9TC025552
SCBDP4ZG0TC025636	SCBCU13S4TC025624	SCBCN13S9TC025566
SCBDP4ZG3TC025517	SCBCU13S6TC025642	SCBCP2ZG2TC025525
SCBDP4ZG6TC025656	SCBDB33S9TC025396	SCBCP2ZG4TC025588
SCBDP4ZGXTTC025613	SCBDM33S2TC025413	SCBCP2ZG5TC025597
SCBCB13S0TC025366	SCBDM33S8TC025593	SCBCP2ZG6TC025561
SCBCB13S1TC025361	SCBDM33SXTTC025546	SCBCP2ZG7TC025553
SCBCB13S2TC025529	SCBDP4ZG0TC025538	SCBCP2ZGXTTC025594

SCBCR2ZG1TC025557	SCBCJ13S1TC024780	SCBCB13S6TC025498
SCBCR2ZG6TC025537	SCBCN13S0TC025536	SCBCD13S9TC025439
SCBCU13S9TC025540	SCBCN13S6TC025475	SCBCJ1ZG3TC025481
SCBDM33S1TC025550	SCBCN13S7TC025520	SCBCM13S0TC025491
SCBDN33S6TC025508	SCBCN13S9TC025311	SCBCM13S2TC025511
SCBDN33S7TC025470	SCBCP2ZG0TC025510	SCBCM13S3TC025369
SCBDN33S9TC025292	SCBCP2ZG1TC025337	SCBCM13S3TC025453
SCBDP4ZG1TC025483	SCBCP2ZG1TC025418	SCBCM13S3TC025484
SCBDP4ZG4TC025574	SCBCP2ZG1TC025516	SCBCM13S5TC025454
SCBDP4ZG9TC025554	SCBCP2ZG8TC025495	SCBCM13S7TC025469
SCBDR4ZG2TC025499	SCBCP2ZG9TC025473	SCBCM1ZG4TC025478
SCBDR4ZG8TC025460	SCBCU13S0TC025541	SCBCN13S6TC025458
SCBCB13S0TC025545	SCBCU13S4TC025512	SCBCP2ZG4TC025476
SCBCB13S6TC025548	SCBCU13S9TC024744	SCBCP2ZG5TC025471
SCBCM13SXTTC025451	SCBDC33S6TC025496	SCBCP2ZG9TC025487
SCBCN13S2TC025523	SCBDM33S4TC025493	SCBCP2ZGXTTC025482
SCBCN13S5TC025533	SCBDM33S6TC025527	SCBCR2ZG7TC025501
SCBCN13SXTTC025544	SCBDN33S2TC025344	SCBCU13SXTTC025465
SCBCP2ZGXTTC025532	SCBDN33S7TC025503	SCBDB33S9TC025253
SCBCU13S1TC025502	SCBDP4ZG2TC025542	SCBDM33S8TC025464
SCBCU13S5TC025504	SCBDP4ZG5TC025521	SCBDN33S0TC025455
SCBDM33S6TC025513	SCBDR4ZG7TC025448	SCBDN33S3TC025479
SCBDN33S7TC025534	SCBDR4ZG8TC025426	SCBDP4ZG6TC025401
SCBDP4ZG2TC025489	SCBCB13S1TC025215	SCBCB13S0TC025450
SCBCB13S0TC025433	SCBCB13S2TC025417	SCBCB13S2TC025420
SCBCB13S3TC025216	SCBCB13S3TC025488	SCBCB13S5TC025251
SCBCB13S9TC025530	SCBCB13S5TC025346	SCBCB13S9TC025379
SCBCH13S4TC025515	SCBCB13S5TC025492	SCBCC13S6TC025093

SCBCM13S0TC025443	SCBDN33SXTTC025091	SCBCM13S8TC025285
SCBCM13S1TC024950	SCBDR4ZG6TC025358	SCBCN13S1TC025299
SCBCM13S6TC025415	SCBCC13S7TC025393	SCBCN13S5TC025371
SCBCM13S7TC025441	SCBCM13S0TC025328	SCBCN13SXTTC025348
SCBCM13S8TC025352	SCBCM13S3TC025386	SCBCP2ZG5TC025373
SCBCM1ZG6TC024610	SCBCM13S7TC025312	SCBCP2ZG7TC025259
SCBCM1ZG8TC025435	SCBCM13S7TC025388	SCBCR2ZG2TC025342
SCBCP2ZG6TC025446	SCBCM13SXTTC025269	SCBDP4ZG6TC025172
SCBCR2ZG2TC025437	SCBCM13SXTTC025305	SCBDP4ZG6TC025219
SCBDM33S1TC025421	SCBCN13S0TC025150	SCBDP4ZG7TC025164
SCBDM33S7TC025407	SCBCN13S0TC025391	SCBDP4ZG9TC025246
SCBDM33S7TC025410	SCBCN13S2TC025389	SCBDP4ZGXTTC024932
SCBDP4ZG3TC025288	SCBCN13S2TC025411	SCBDP4ZGXTTC025322
SCBDP4ZG3TC025372	SCBCN13S8TC025235	SCBCB13S1TC025280
SCBDP4ZG6TC025432	SCBCN13S9TC025177	SCBCB13S7TC024988
SCBDR4ZG1TC025381	SCBCN1ZG0TC025278	SCBCB13S8TC025308
SCBCB13S6TC025422	SCBCN1ZGXTTC025398	SCBCM13S7TC025228
SCBCB13S7TC025414	SCBCP2ZG1TC025399	SCBCM13S9TC025201
SCBCM13S0TC025233	SCBCR2ZG7TC025384	SCBCM13S9TC025263
SCBCM13S4TC025428	SCBDP4ZG5TC025339	SCBCM13S9TC025294
SCBCM13S7TC025424	SCBDP4ZGXTTC025367	SCBCM1ZG2TC025320
SCBCM13S9TC025408	SCBDR4ZG1TC025350	SCBCN13S4TC025247
SCBCN13S6TC025430	SCBDR4ZGXTTC025332	SCBCN13S4TC025295
SCBCN13S8TC025395	SCBCB13S0TC025318	SCBCN13S7TC025291
SCBCP2ZG2TC025377	SCBCB13S1TC025330	SCBCN13S9TC025325
SCBDM33S9TC025375	SCBCB13S5TC025315	SCBCN13SXTTC024863
SCBDN33S3TC024879	SCBCD13S7TC025360	SCBCN13SXTTC025141
SCBDN33S4TC025362	SCBCM13S2TC025301	SCBCP2ZG3TC025310

SCBCP2ZG7TC025276	SCBCN13S4TC025152	SCBCN13S1TC025125
SCBCU13S3TC025243	SCBCN13S4TC025264	SCBCN13S3TC024896
SCBCU13S8TC025237	SCBCN13S5TC025256	SCBCP2ZG0TC024843
SCBDM33S2TC025265	SCBCN13SXTTC024619	SCBCR2ZG9TC025208
SCBDM33S3TC025307	SCBCP2ZG1TC025225	SCBCU13S6TC025012
SCBDN33S9TC025115	SCBCP2ZG3TC025274	SCBDM33S1TC025189
SCBDN33SXTTC025284	SCBCP2ZG4TC025039	SCBDM33S3TC025226
SCBDP4ZG2TC025279	SCBCR23S6TC025079	SCBCB13SXTTC025245
SCBDP4ZG6TC025205	SCBCR23S9TC025206	SCBCM13S1TC025192
SCBDP4ZG6TC025317	SCBCR2ZG2TC025289	SCBCM13S4TC025199
SCBDP4ZG8TC025268	SCBCR2ZG7TC025191	SCBCM13S4TC025204
SCBDP4ZG9TC025313	SCBDM33S1TC025273	SCBCM13S4TC025221
SCBDR4ZG0TC025033	SCBDM33S4TC024652	SCBCM13S9TC025120
SCBDR4ZG3TC025303	SCBDN33S1TC025061	SCBCN13S1TC025240
SCBCB13S4TC025287	SCBDN33S1TC025271	SCBCP2ZG2TC025184
SCBCB13S5TC025282	SCBDN33S2TC024906	SCBCP2ZG8TC024881
SCBCB13S6TC024822	SCBDP4ZG0TC025250	SCBCP2ZG9TC025232
SCBCB13S8TC025258	SCBDP4ZG4TC025168	SCBDM33S9TC025182
SCBCC13S6TC024977	SCBDP4ZG5TC025261	SCBDM33SXTTC024946
SCBCD13S7TC024922	SCBDP4ZG5TC025275	SCBDN33S0TC025214
SCBCG13S5TC024926	SCBDP4ZG8TC025044	SCBDN33S2TC025179
SCBCM13S4TC025218	SCBDP4ZG8TC025223	SCBDP4ZG5TC025065
SCBCM13S4TC025266	SCBDR43S4TC025145	SCBDP4ZG7TC025052
SCBCM13S8TC025254	SCBDR4ZG0TC025212	SCBDP4ZG7TC025147
SCBCM13SXTTC025031	SCBDR4ZG6TC025229	SCBCB13SXTTC025133
SCBCM1ZG0TC024764	SCBDR4ZG7TC025241	SCBCD13S6TC024944
SCBCN13S2TC024646	SCBCM13S5TC025230	SCBCM13S2TC025167
SCBCN13S2TC024887	SCBCM13S9TC025196	SCBCM13S4TC025171

SCBCM13S9TC025165	SCBCM13SXTC025076	SCBCN13S9TC024921
SCBCN13S0TC024967	SCBCN13S7TC025128	SCBCP2ZG2TC025119
SCBCN13S0TC025181	SCBCN13SXTC025088	SCBCP2ZG6TC025043
SCBCN13S1TC025173	SCBCN1ZG9TC025070	SCBCP2ZG9TC025036
SCBCN13S4TC025006	SCBCP2ZG1TC025175	SCBCR2ZG9TC025113
SCBCN13S5TC024477	SCBCP2ZG3TC025159	SCBDB33S5TC024763
SCBCN13SXTC025138	SCBCR2ZG6TC025053	SCBDG33S1TC024938
SCBCN13SXTC025155	SCBCU13SXTC025157	SCBDJ33SXTC025085
SCBCP2ZG9TC025148	SCBDN33S0TC025021	SCBDM33S0TC025099
SCBCP2ZGXTC025143	SCBDN33S1TC025058	SCBDM33S4TC024893
SCBDB33SXTC024581	SCBDP4ZG0TC025037	SCBDM33S6TC024958
SCBDM33S2TC025153	SCBDP4ZG2TC025122	SCBDN33S2TC024968
SCBDM33S8TC025013	SCBDP4ZG3TC025095	SCBDN33S4TC024759
SCBDN33S4TC024986	SCBDR4ZG0TC025131	SCBDN33S9TC024840
SCBDN33S9TC025194	SCBDR4ZG1TC025137	SCBDP4ZG0TC025068
SCBDP4ZG0TC025197	SCBDR4ZG4TC025049	SCBDP4ZG0TC025071
SCBDP4ZG6TC025186	SCBCB13S4TC025001	SCBDP4ZG0TC025118
SCBDR4ZG7TC024784	SCBCB13S7TC025090	SCBDP4ZG1TC025046
SCBCB13S3TC025135	SCBCB13S8TC024952	SCBDP4ZG2TC025041
SCBCB13S4TC025144	SCBCJ13S1TC024858	SCBDR4ZG9TC025077
SCBCB13S8TC024983	SCBCM13S3TC024870	SCBDR4ZG9TC025080
SCBCD13S8TC023908	SCBCM13S7TC025097	SCBCP2ZG5TC025101
SCBCM13S2TC025086	SCBCM1ZG8TC024575	SCBCP2ZG1TC025063
SCBCM13S3TC025162	SCBCN13S0TC024760	SCBCP2ZG4TC025073
SCBCM13S7TC024824	SCBCN13S3TC025126	SCBDM33S1TC025029
SCBCM13S7TC025083	SCBCN13S5TC024916	SCBDM33S4TC025025
SCBCM13S7TC025116	SCBCN13S7TC025081	SCBDP4ZG6TC025074
SCBCM13S9TC025103	SCBCN13S8TC024960	SCBCB13S5TC025024

SCBCB13S6TC025016	SCBDM33S6TC024829	SCBDM33S5TC024790
SCBCB13S8TC024966	SCBDM33S6TC025009	SCBDM33S6TC024975
SCBCB13SXTTC024919	SCBDM33S7TC024998	SCBDN33S3TC024994
SCBCB13SXTTC024970	SCBDP4ZG2TC025055	SCBDN33S6TC024990
SCBCJ1ZG0TC024370	SCBDP4ZG8TC024928	SCBDP4ZG3TC024755
SCBCM13S3TC024979	SCBDR4ZG4TC024192	SCBDR4ZG2TC024885
SCBCM13S3TC024996	SCBCB13S6TC024948	SCBDR4ZG4TC024032
SCBCM13S5TC024465	SCBCB13S8TC024918	SCBCB13S0TC024878
SCBCM13S6TC025060	SCBCB13S8TC025020	SCBCB13S2TC024963
SCBCM13S7TC024936	SCBCM13S1TC024883	SCBCB13S7TC024912
SCBCM13S9TC025005	SCBCM13S2TC025010	SCBCB13S7TC025008
SCBCM13SXTTC025028	SCBCM13S3TC024965	SCBCM13S0TC024874
SCBCM1ZG2TC024992	SCBCM13S5TC025003	SCBCM13S0TC024924
SCBCM1ZG4TC024797	SCBCM13S7TC025004	SCBCM13S2TC024908
SCBCN13S1TC024573	SCBCM13S8TC024914	SCBCM13S2TC024942
SCBCN13S2TC024985	SCBCM13S9TC024954	SCBCM13S4TC024974
SCBCN13S3TC025045	SCBCM13S9TC025019	SCBCM13S5TC024904
SCBCN13S6TC024617	SCBCM1ZG7TC024700	SCBCM13S6TC024961
SCBCN13SXTTC025026	SCBCN13S2TC024999	SCBCN13S4TC024972
SCBCP2ZG5TC025048	SCBCN13S2TC025022	SCBCN13S5TC024821
SCBCP2ZG6TC024703	SCBCN13S5TC024981	SCBCN13S6TC024844
SCBCP2ZG7TC025035	SCBCP2ZG2TC024861	SCBCN13S8TC024876
SCBCP2ZG9TC024307	SCBCP2ZG8TC024931	SCBCU13S0TC024969
SCBCR2ZG1TC025042	SCBCR13SXTTC025015	SCBCU13S1TC024902
SCBCR2ZG3TC025057	SCBCR2ZG0TC024934	SCBCU13S8TC024766
SCBDB33S5TC024889	SCBCR2ZG7TC024929	SCBDM33S8TC024864
SCBDM33S0TC024115	SCBCR2ZGXTC024326	SCBDN33S4TC024910
SCBDM33S3TC025002	SCBCU13S8TC024587	SCBCB13S0TC024900

SCBCB13S1TC024940	SCBCM13S0TC024390	SCBCB13S5TC024830
SCBCB13S5TC024682	SCBCM13S5TC024871	SCBCB13S8TC024837
SCBCM13S5TC024739	SCBCM13S7TC024788	SCBCM13S0TC024714
SCBCM13S6TC024698	SCBCM1ZG4TC024735	SCBCM13S1TC024687
SCBCM13S6TC024894	SCBCM1ZG5TC024629	SCBCM13S4TC024747
SCBCM1ZG4TC024637	SCBCN13S0TC024709	SCBCM13S9TC024825
SCBCM1ZG7TC024695	SCBCN13S0TC024743	SCBCM13S9TC024839
SCBCM1ZG8TC024852	SCBCN13S6TC024827	SCBCM13SXTTC024722
SCBCN13S5TC024866	SCBCN13SXTTC024684	SCBCM1ZG2TC024832
SCBCN13S6TC024956	SCBCN1ZG5TC024658	SCBCM1ZG5TC024503
SCBCN13S7TC024898	SCBCP2ZG1TC024799	SCBCM1ZG5TC024677
SCBDM33S1TC024334	SCBCR2ZG3TC024846	SCBCM1ZGXTTC024819
SCBDM33S4TC024456	SCBCR2ZG4TC024855	SCBCN13S1TC024623
SCBDN33S0TC024872	SCBCR2ZG9TC024673	SCBCN13S4TC024163
SCBDN33S8TC024635	SCBCU13S9TC024811	SCBCN13SXTTC024376
SCBDR4ZG3TC024121	SCBDB33S8TC024868	SCBCP2ZG4TC024716
SCBCB13S2TC024848	SCBDP4ZG1TC024818	SCBCP2ZG7TC024791
SCBCM13S0TC024891	SCBDP4ZG2TC024794	SCBCR2ZG2TC024305
SCBCR13S5TC024807	SCBDP4ZG3TC024769	SCBDM33S0TC024745
SCBCR2ZG8TC024812	SCBDP4ZG4TC024697	SCBDM33S4TC024621
SCBCU13S9TC024842	SCBDP4ZG4TC024778	SCBDN33S5TC024740
SCBDM33S8TC024251	SCBDP4ZG4TC024845	SCBDP4ZG4TC024814
SCBDP4ZG8TC024850	SCBDP4ZG5TC024806	SCBCB13S4TC024804
SCBDR4ZG8TC024860	SCBDP4ZG5TC024854	SCBCB13S6TC024786
SCBCB13S1TC024856	SCBDP4ZGXTTC024834	SCBCB13S9TC024779
SCBCB13S3TC024728	SCBCB13S0TC024816	SCBCM13S0TC024762
SCBCB13SXTTC024757	SCBCB13S2TC024476	SCBCM13S0TC024793
SCBCD13S3TC024318	SCBCB13S4TC024835	SCBCM13S2TC024777

SCBCM1ZG2TC024751	SCBCM1ZGXTC024495	SCBCR2ZG9TC024737
SCBCM1ZG5TC024730	SCBCM1ZGXTC024643	SCBDM33S1TC024611
SCBCM1ZG7TC024809	SCBCN13S0TC024659	SCBDM33S7TC024693
SCBCN13S5TC024253	SCBCN13S9TC024773	SCBDM33S8TC024685
SCBCN13SXTTC024720	SCBCP2ZG8TC024301	SCBDM3ZG8TC024480
SCBCN1ZG0TC024583	SCBCR13S1TC024710	SCBDP4ZGXTTC024719
SCBCP2ZG1TC024771	SCBCR13S8TC024669	SCBDR33S0TC024715
SCBCU13S4TC024795	SCBCU13S6TC024782	SCBCB13S1TC024680
SCBCU13S6TC024801	SCBCU13SXTTC024655	SCBCB13S4TC024625
SCBCU13S9TC024775	SCBDM33S0TC024597	SCBCM13S6TC024491
SCBDM33S0TC024602	SCBDM33S1TC024639	SCBCM13S9TC024209
SCBDM33S2TC024388	SCBDM33S4TC024666	SCBCM1ZG4TC024718
SCBDP4ZG1TC024012	SCBDM3ZG9TC024679	SCBCN13S5TC024706
SCBDP4ZG6TC024507	SCBDN33S6TC024701	SCBCN13S8TC024313
SCBDP4ZG8TC024802	SCBDP4ZG4TC024473	SCBCN13S8TC024599
SCBDU33S2TC024732	SCBDP4ZG5TC024711	SCBCR2ZG4TC024662
SCBCD13S3TC024724	SCBDP4ZG7TC024726	SCBCU13S0TC024616
SCBCJ13S6TC024712	SCBDP4ZG8TC024749	SCBCU13S3TC024707
SCBCM13S1TC024270	SCBDU33S1TC024530	SCBCU13SXTTC024641
SCBCM13S1TC024768	SCBCB13S2TC024526	SCBDB33S6TC024321
SCBCM13S5TC024675	SCBCB13SXTTC024483	SCBDM33S7TC024497
SCBCM13S5TC024756	SCBCM13S3TC024187	SCBDM33S9TC024565
SCBCM13S6TC024653	SCBCM13S7TC024631	SCBDM3ZG6TC024607
SCBCM13SXTTC024753	SCBCM1ZG0TC024733	SCBDN33S9TC024627
SCBCM1ZG4TC024671	SCBCM1ZG2TC024510	SCBDN3ZG5TC024689
SCBCM1ZG4TC024704	SCBCP2ZG3TC024691	SCBDN3ZGXTTC024672
SCBCM1ZG7TC024664	SCBCP2ZG6TC024667	SCBDP4ZG9TC024615
SCBCM1ZG8TC024608	SCBCR2ZG0TC024741	SCBDR4ZG7TC024414

SCBDU33S1TC024656	SCBCM13S5TC024613	SCBDR4ZGXTTC024567
SCBDU33S4TC024554	SCBCM13S7TC024595	SCBCM13S5TC024546
SCBCB13S4TC024592	SCBCM1ZG2TC024605	SCBCM13S6TC024538
SCBCB13S8TC024322	SCBCM1ZG5TC024372	SCBCM13SXTTC024512
SCBCM13S2TC024603	SCBCN13S0TC024628	SCBCN13S1TC024508
SCBCM13S5TC024563	SCBCN13S5TC023930	SCBCN13S5TC024513
SCBCM13S5TC024644	SCBCN13S8TC024568	SCBCN13S9TC024353
SCBCM1ZG2TC024541	SCBCN1ZG3TC024545	SCBCP2ZG6TC024555
SCBCM1ZGXTTC024528	SCBCN1ZG4TC024604	SCBCP2ZG9TC024551
SCBCM1ZGXTTC024562	SCBCP2ZG5TC024577	SCBCR2ZG5TC024458
SCBCN13S4TC024650	SCBCP2ZGXTTC024543	SCBCU13S0TC024499
SCBCP2ZG0TC024633	SCBCU13S2TC024620	SCBCU13S8TC024525
SCBCU13S1TC024558	SCBCU13S5TC024594	SCBCU13S8TC024556
SCBCU13S2TC024505	SCBCU13S9TC024601	SCBDN33S6TC024536
SCBCU13S4TC024571	SCBDM33S2TC024018	SCBDN33SXTTC024569
SCBDM33S0TC024230	SCBDN3ZG9TC024534	SCBDP4ZG4TC024487
SCBDM33S1TC024124	SCBDP4ZG6TC024572	SCBDP4ZG5TC024501
SCBDM33S4TC024585	SCBDP4ZG8TC024511	SCBDR4ZG4TC024550
SCBDM33S9TC024548	SCBCB13S1TC024579	SCBDR4ZGXTTC024522
SCBDN33S7TC024478	SCBCB13S5TC024472	SCBDU33S2TC024360
SCBDN33S7TC024660	SCBCM13S5TC024532	SCBCB13S4TC024463
SCBDP4ZG8TC024590	SCBCM13S7TC024516	SCBCG13S1TC024521
SCBDP4ZG9TC024355	SCBCM1ZG3TC024533	SCBCM13S0TC023983
SCBDP4ZGXTTC024560	SCBCN1ZG2TC024553	SCBCM13S9TC024520
SCBDP4ZGXTTC024574	SCBCP2ZG0TC024311	SCBCN13S0TC024404
SCBDU33S2TC024648	SCBDB33S3TC024258	SCBCN13S1TC024489
SCBCB13S4TC024589	SCBDN33S6TC024570	SCBCN13S9TC024515
SCBCB13S7TC024425	SCBDP4ZG4TC024540	SCBCN13SXTTC024474

SCBCR2ZG6TC024484	SCBDN33S4TC024485	SCBCD13S8TC024427
SCBDM33S0TC024518	SCBDR4ZG2TC024367	SCBCM13S1TC024382
SCBDM33S3TC023749	SCBDR4ZGXTTC024441	SCBCM13S3TC024416
SCBDM33S6TC024412	SCBCB13S0TC024444	SCBCM13S4TC024294
SCBDM33S8TC024363	SCBCB13S7TC024411	SCBCM13S4TC024361
SCBDN33S3TC024493	SCBCB13S7TC024439	SCBCM13S5TC024255
SCBDN33S4TC024504	SCBCM13S7TC024046	SCBCM13S5TC024269
SCBDN33SXTTC024524	SCBCM13S7TC024435	SCBCM13SXTTC024381
SCBDP4ZG0TC023966	SCBCM1ZG5TC024419	SCBCM13SXTTC024431
SCBDP4ZG0TC024373	SCBCN13S3TC024297	SCBCN13S3TC024333
SCBDP4ZG1TC024429	SCBCN13S4TC024406	SCBCN13S5TC024298
SCBCB13S0TC024332	SCBCN13S6TC024245	SCBCN13S5TC024320
SCBCB13S1TC024467	SCBCN13S9TC024448	SCBCN13S5TC024379
SCBCB13S1TC024470	SCBCN1ZG4TC024344	SCBCN13S7TC024335
SCBCB13S5TC024455	SCBCN1ZG9TC024436	SCBCR2ZG2TC024420
SCBCB13S8TC024451	SCBCP2ZG8TC024119	SCBDM33S4TC024392
SCBCB13S9TC024460	SCBCR2ZG4TC024399	SCBDM33S7TC024385
SCBCM13S5TC024191	SCBDB33S6TC024383	SCBDM33S7TC024418
SCBCN13S7TC024481	SCBDN33S5TC024446	SCBDM33S8TC024282
SCBCN1ZG1TC024432	SCBDN33S8TC024327	SCBDP4ZG1TC024303
SCBCR2ZG0TC024271	SCBDP4ZG0TC024437	SCBDP4ZG4TC024330
SCBCR2ZG6TC024453	SCBDP4ZG2TC024424	SCBDP4ZG4TC024408
SCBDB33S5TC024309	SCBDP4ZG5TC024000	SCBDP4ZG9TC024422
SCBDM33S2TC024035	SCBDP4ZG7TC024449	SCBDR4ZG7TC024400
SCBDM33S6TC024443	SCBCB13S2TC024395	SCBCB13S2TC024364
SCBDM33SXTTC024462	SCBCB13S4TC024396	SCBCJ1ZG7TC024351
SCBDN33S4TC024454	SCBCB13S6TC024402	SCBCM13S3TC024092
SCBDN33S4TC024468	SCBCB13SXTTC024421	SCBCM13S7TC024337

SCBCN13SXTC024409	SCBCP2ZG4TC024232	SCBDR4ZG4TC024323
SCBDM33SXTC024378	SCBDM33S4TC024182	SCBDR4ZG5TC023973
SCBDN33S5TC024317	SCBDM33S6TC024166	SCBCM13S3TC023783
SCBCB13S0TC024346	SCBDM33S6TC024300	SCBCM13S4TC024263
SCBCB13S2TC024350	SCBDM3ZG2TC024247	SCBCM13S6TC024281
SCBCB13S5TC024133	SCBDN33S3TC024204	SCBCM13S7TC024239
SCBCB13S6TC024304	SCBDN33S8TC024201	SCBCM13S9TC024257
SCBCB13S7TC024375	SCBDP4ZG0TC024325	SCBCN13S0TC024080
SCBCG13S8TC024340	SCBDP4ZG3TC024349	SCBCN13S2TC024114
SCBCM13S5TC024210	SCBDP4ZG9TC024338	SCBCN13S2TC024243
SCBCM13SXTC024090	SCBDR4ZG0TC024268	SCBCN13S2TC024274
SCBCN13S0TC024290	SCBCN13S1TC024315	SCBCN13S3TC024235
SCBCN13S4TC024292	SCBCN13S8TC024277	SCBCN13S3TC024266
SCBCN13S8TC024215	SCBCN13S9TC024160	SCBCN13S9TC024224
SCBCP2ZG7TC024287	SCBCN1ZG6TC024328	SCBCP2ZG0TC024194
SCBCP2ZG9TC024386	SCBCP2ZG4TC024229	SCBCP2ZG1TC024107
SCBDM33S1TC024155	SCBCP2ZG4TC024280	SCBCP2ZG3TC024206
SCBDM33S1TC024365	SCBCP2ZG6TC024250	SCBCP2ZG5TC024241
SCBDP4ZG5TC024398	SCBCP2ZG6TC024314	SCBCP2ZG8TC024248
SCBCM13S0TC024356	SCBCP2ZGXTTC024218	SCBCP2ZG9TC024260
SCBCM13S1TC024284	SCBCR2ZG3TC024295	SCBCP2ZGXTTC024154
SCBCM13S1TC024348	SCBCR2ZG5TC024203	SCBDM33S8TC024170
SCBCM13S4TC024358	SCBDM33S0TC024261	SCBDM33S9TC024226
SCBCM13S7TC024368	SCBDM33S3TC024240	SCBDN33S4TC024275
SCBCM1ZGXTTC024156	SCBDM33S8TC024279	SCBDN33S5TC024219
SCBCN13S2TC024310	SCBDP4ZG5TC024286	SCBDN33S7TC024254
SCBCN13S4TC024342	SCBDP4ZG8TC024265	SCBDP4ZG4TC024196
SCBCP2ZG0TC024289	SCBDR4ZG0TC024237	SCBDP4ZG5TC024272

SCBDP4ZG6TC024152	SCBDP4ZG6TC024233	SCBCP2ZG0TC024146
SCBDP4ZG7TC024189	SCBDR4ZG7TC024140	SCBCP2ZG4TC024151
SCBDP4ZGXTTC024185	SCBCM13S2TC024181	SCBCP2ZG6TC024054
SCBDR4ZG2TC024045	SCBCM13S7TC024130	SCBCR2ZG9TC024110
SCBCM13S0TC024227	SCBCM13S9TC024176	SCBDM33S9TC024131
SCBCM13S1TC024236	SCBCM13SXTTC024087	SCBDN33SXTTC024118
SCBCM13S2TC024228	SCBCM13SXTTC024137	SCBDP4ZG4TC024098
SCBCM13S3TC024190	SCBCN13S4TC024180	SCBCM13S0TC024079
SCBCM13S8TC024167	SCBCN13S5TC024172	SCBCM13S1TC024088
SCBCM13SXTTC024171	SCBCN13S6TC024097	SCBCM13S2TC024052
SCBCM13SXTTC024221	SCBCP2ZG5TC024143	SCBCM13S2TC024116
SCBCN13S1TC024184	SCBCP2ZGXTTC024123	SCBCM13S3TC023959
SCBCN13S4TC024213	SCBCP2ZGXTTC024199	SCBCM13S4TC024036
SCBCN13SXTTC024197	SCBCR2ZG8TC024177	SCBCM13S7TC023964
SCBCP2ZG0TC023921	SCBDN33S0TC024175	SCBCM13S7TC023981
SCBCR2ZG8TC023949	SCBDP4ZG6TC024216	SCBCM13S9TC023884
SCBDM33S2TC024178	SCBDP4ZG9TC023707	SCBCM13S9TC023951
SCBDM33S5TC024207	SCBCM13S0TC024096	SCBCM13S9TC024128
SCBDM33S7TC024144	SCBCM13S2TC023824	SCBCN13S1TC024105
SCBDM33S7TC024161	SCBCM13S2TC024150	SCBCN13S2TC024100
SCBDM33S9TC024212	SCBCM13S3TC024111	SCBCN13S2TC024145
SCBDM33SXTTC024168	SCBCM13S3TC024173	SCBCP2ZG8TC024072
SCBDN33S0TC024158	SCBCM13S6TC023860	SCBCP2ZGXTTC024008
SCBDN33S7TC024223	SCBCM13S7TC023866	SCBCR2ZG2TC024126
SCBDP4ZG0TC024244	SCBCM13S7TC024113	SCBDM33S3TC024027
SCBDP4ZG1TC024057	SCBCN13S0TC024063	SCBDM33S5TC024109
SCBDP4ZG5TC024059	SCBCN13S5TC024141	SCBDM33S6TC024104
SCBDP4ZG5TC024076	SCBCN13S7TC024089	SCBDM33S9TC024078

SCBDN33S4TC024082	SCBDP4ZG3TC023993	SCBDP4ZG6TC024037
SCBDP4ZG0TC024101	SCBDP4ZG4TC024070	SCBDP4ZG6TC024040
SCBDP4ZG4TC024148	SCBDP4ZG5TC024112	SCBDP4ZG8TC023987
SCBDP4ZG6TC024068	SCBDP4ZG8TC023942	SCBDP4ZG8TC024024
SCBDP4ZG6TC024135	SCBDP4ZG9TC024050	SCBDP4ZG9TC024047
SCBDP4ZG7TC024127	SCBDR4ZG8TC024065	SCBDR4ZG4TC023771
SCBDR4ZG9TC024091	SCBCM13S6TC023969	SCBCM13S8TC023827
SCBCM13S4TC023971	SCBCM13S6TC024023	SCBCM13S8TC023939
SCBCM13S7TC024029	SCBCM13S7TC023897	SCBCN13S6TC024021
SCBCM13SXTTC024056	SCBCM13SXTTC024011	SCBCP2ZG4TC024019
SCBCN13S0TC023995	SCBCM13SXTTC024042	SCBCP2ZG7TC023835
SCBCN13S0TC024094	SCBCN13S3TC024073	SCBCP2ZG8TC024041
SCBCN13S2TC023979	SCBCN13S5TC024009	SCBDM33S0TC023840
SCBCN13S6TC024066	SCBCP2ZG0TC024034	SCBDP4ZG2TC024004
SCBCN13S8TC024005	SCBCP2ZG1TC024060	SCBDP4ZG5TC023946
SCBCN13S8TC024103	SCBCP2ZG3TC023976	SCBDP4ZG9TC023867
SCBCN13SXTTC024085	SCBCP2ZG3TC024075	SCBDR4ZG6TC023996
SCBCP2ZG0TC023711	SCBCR2ZG0TC024044	SCBCM13S0TC023997
SCBCP2ZG5TC023798	SCBCR2ZG7TC024039	SCBCM13S2TC023872
SCBCP2ZG5TC024031	SCBDM33S7TC023883	SCBCM13S4TC023999
SCBCP2ZG8TC024069	SCBDN33S3TC023859	SCBCM13S8TC023889
SCBCP2ZG8TC024122	SCBDN33S7TC024030	SCBCM13S9TC024002
SCBCP2ZG9TC024016	SCBDN33S8TC024053	SCBCN13S0TC023947
SCBCP2ZGXTTC024025	SCBDP4ZG2TC023984	SCBCN13S3TC023957
SCBDM33S2TC023970	SCBDP4ZG5TC023719	SCBCN13S3TC023991
SCBDM33S3TC024061	SCBDP4ZG5TC023977	SCBCN13S4TC023904
SCBDM33S9TC023786	SCBDP4ZG5TC024014	SCBCN13S5TC023913
SCBDN33S6TC023905	SCBDP4ZG6TC024006	SCBCN13S7TC023900

SCBCN13SXTC023986	SCBDN33S9TC023963	SCBCP2ZG7TC023933
SCBCP2ZG1TC023989	SCBDP4ZG1TC023944	SCBCR2ZG2TC023882
SCBCP2ZG7TC023916	SCBDP4ZG3TC023928	SCBCR2ZG9TC023779
SCBCR2ZG9TC023927	SCBDP4ZG9TC023917	SCBDM33S2TC023855
SCBDM33S6TC023714	SCBDR4ZG1TC023873	SCBDM33S9TC023836
SCBDP4ZG4TC023811	SCBDR4ZG7TC023876	SCBDM33S9TC023898
SCBDP4ZG4TC023940	SCBCM13S1TC023877	SCBDN33S0TC023799
SCBDP4ZG5TC023980	SCBCM13S5TC023851	SCBDP4ZG4TC023923
SCBDP4ZG7TC023902	SCBCN13S6TC023791	SCBDP4ZG5TC023896
SCBDP4ZG7TC023950	SCBCP2ZG2TC023919	SCBDP4ZG8TC023777
SCBDP4ZGXTTC023845	SCBCP2ZG2TC023936	SCBDP4ZGXTTC023862
SCBDR4ZG2TC023932	SCBCP2ZG6TC023938	SCBDP4ZGXTTC023893
SCBCM13S1TC023961	SCBCP2ZG8TC023911	SCBDP4ZGXTTC023912
SCBCM13S2TC023953	SCBCP2ZG9TC023822	SCBDP4ZGXTTC023926
SCBCN13S5TC023829	SCBCR2ZG5TC023892	SCBDR4ZG1TC023890
SCBCN13S9TC023879	SCBDJ33S9TC023909	SCBDR4ZG5TC023746
SCBCP2ZG1TC023846	SCBDM33S2TC023886	SCBCN13S5TC023720
SCBCP2ZG2TC023967	SCBDM33S9TC023805	SCBCR2ZG0TC023895
SCBCP2ZG3TC023864	SCBDN33S6TC023838	SCBDM33S2TC023774
SCBCP2ZG3TC023945	SCBDP4ZG0TC023935	SCBCM13S0TC023854
SCBCP2ZG3TC023962	SCBDP4ZG3TC023802	SCBCM13S1TC023751
SCBCP2ZG5TC023820	SCBCM13S2TC023922	SCBCM13SXTTC023831
SCBCP2ZG6TC023941	SCBCM13S5TC023901	SCBCP2ZG0TC023806
SCBCP2ZG8TC023925	SCBCM13S6TC023907	SCBCP2ZG0TC023837
SCBCP2ZGXTTC023974	SCBCP2ZG2TC023760	SCBCP2ZG0TC023868
SCBDM33S4TC023937	SCBCP2ZG3TC023914	SCBCP2ZG1TC023698
SCBDM33S6TC023955	SCBCP2ZG4TC023887	SCBCP2ZG1TC023801
SCBDM33S9TC023920	SCBCP2ZG6TC023874	SCBCP2ZG5TC023834

SCBCP2ZG7TC023754	SCBDM33SXTTC023747	SCBCR2ZG7TC023702
SCBCP2ZG8TC023813	SCBDP4ZG1TC023703	SCBCR2ZG8TC023692
SCBCR2ZG2TC023803	SCBDP4ZG1TC023765	SCBCR2ZGXTTC023709
SCBCR2ZG3TC023812	SCBDP4ZG3TC023735	SCBDM33S0TC023742
SCBCR2ZG9TC023796	SCBDP4ZG6TC023759	SCBDM33S4TC023789
SCBDM33S1TC023815	SCBDP4ZGXTTC023733	SCBDM33S9TC023691
SCBDM33S9TC023870	SCBDR4ZG4TC023818	SCBDN33S1TC023780
SCBDM33SXTTC023697	SCBCM13S5TC023767	SCBDN33S7TC023752
SCBDP4ZG1TC023880	SCBCM13S6TC023809	SCBDP4ZG2TC023726
SCBDP4ZG3TC023850	SCBCM13S7TC023785	SCBDP4ZG6TC023700
SCBDP4ZG4TC023808	SCBCM13S9TC023772	SCBDP4ZG8TC023729
SCBDP4ZG4TC023825	SCBCN13S1TC023732	SCBDR4ZG1TC023694
SCBDP4ZG5TC023722	SCBCN13S3TC023781	SCBDR4ZG7TC023716
SCBDP4ZG6TC023843	SCBCN13S9TC023817	SCBCM13S1TC023734
SCBDP4ZG7TC023821	SCBCP2ZG2TC023743	SCBCM13S6TC023731
SCBDP4ZGXTTC023795	SCBCP2ZG2TC023757	SCBCM13S9TC023741
SCBDP4ZGXTTC023828	SCBCP2ZG3TC023704	SCBCN13S4TC023708
SCBDR4ZG0TC023833	SCBCP2ZG5TC023736	SCBDP4ZG9TC023495
SCBCM13S3TC023699	SCBCP2ZG7TC023690	SCBCN13S4TC023725
SCBCM13S4TC023842	SCBCP2ZG7TC023706	SCBCN13S5TC023748
SCBCM13S6TC023857	SCBCP2ZG7TC023723	SCBCN13S8TC023727
SCBCN13S7TC023816	SCBCP2ZGXTTC023764	SCBDM33S2TC023712
SCBCN13S9TC023848	SCBCP2ZGXTTC023778	SCBDN33S4TC023739
SCBCP2ZG2TC023788	SCBCR2ZG0TC023718	SCBDM33S5TC023493
SCBCP2ZG6TC023762	SCBCR2ZG1TC023775	
SCBCP2ZG8TC023794	SCBCR2ZG3TC023695	
SCBCP2ZG9TC023769	SCBCR2ZG3TC023745	
SCBDM33S4TC023792	SCBCR2ZG6TC023738	