

# SF706 - Cascadia Axle Conversion: Adaptive Tandem (AT) 6x4 to New Final Drive (NFD)

Daimler Truck  
North America LLC

## Field Service Campaign

SF706 A-B

Creation Date: February 2026

### Cascadia Axle Conversion: Adaptive Tandem (AT) 6x4 to New Final Drive (NFD)

Models Affected					
Make	Model	Model Year Start	Model Year End	Production Start Date	Production End Date
Freightliner	Cascadia	2021	2024	02/24/2020	02/02/2023

### General Information

On behalf of the entry listed below, Daimler Truck North America LLC (DTNA), is initiating Field Service Campaign SF706 to modify the affected vehicles.

- Freightliner Trucks Division

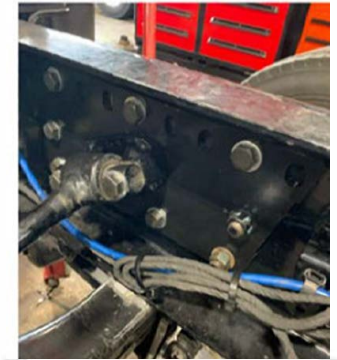
**PROBLEM:** Due to discontinued production, certain vehicles with an Adaptive Tandem (AT) 6x4 axle configuration will no longer be supported with service documentation and service parts.

**SOLUTION:** The vehicles will be retrofitted, replacing the AT 6x4 axle configuration with New Final Drive (NFD) axles and supporting parts.

Setting the paramGaugePos3 Parameter Value



Axle Removed from the Chassis



Left-Hand Forward Lateral Rod and Bolt Installation After Drilling Is Completed



Dash Side Panel



Right-Hand Lateral Rod and Bolt Installation After Drilling Is Completed