



Crank Improvement of the Wiper Motor

This instruction refers to other documents that are necessary to do the procedure.

Situation

Crank of the wiper motor may wear prematurely.

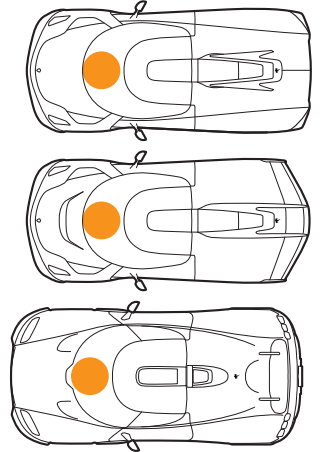
Action

Replace the original crank with a new one in steel.



WARNING

Always refer to the manufacturer's safety data sheet for the chemicals and use the necessary PPE. The chemicals can cause injury or death.



PPE	REFERENCE	QUANTITY
Protective gloves	–	1 pair
Safety goggles	–	1

PARTS	REFERENCE	QUANTITY
DOGA wiper motor crank	1093518	1 pcs
Nut clange M8 10 -0010	1035526	1 pcs
Washer wedge lock large 16.6x8.7x2.15 520HV A4	1036320	2 pcs

TOOLS	SPECIFICATION	QUANTITY
General mechanical tools	–	–
Cloth	–	–

CONSUMABLES	REFERENCE	QUANTITY
Brake cleaner	130-183-6101	–
High temperature grease	130-183-5002	–
Loctite 243	130-174-0552	–
Masking tape	–	–

Prepare

1. Open the front hood with the key fob or from the center console.
2. Disconnect the 12 V system, refer to:
 - ° Jesko, **WOM-00082**.
 - ° CC850, **WOM-00489**.

Remove the Old Motor Crank

1. Put on the personal protective equipment.

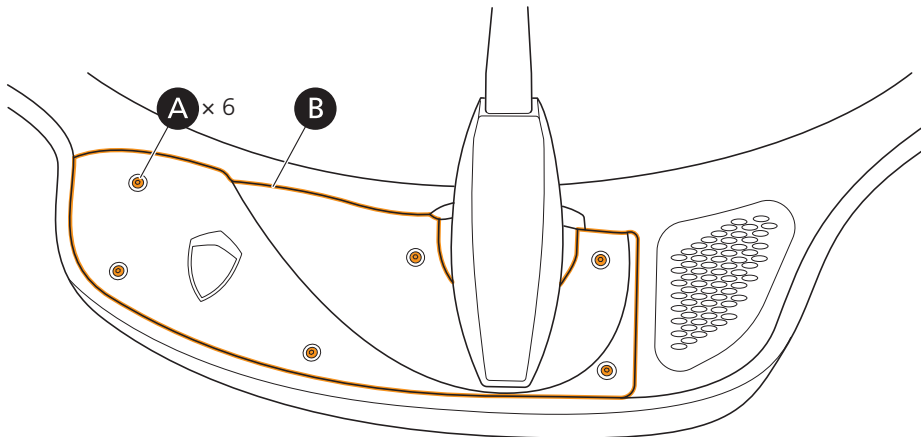




CAUTION

Put masking tape on sensitive areas to prevent damage to the surface.

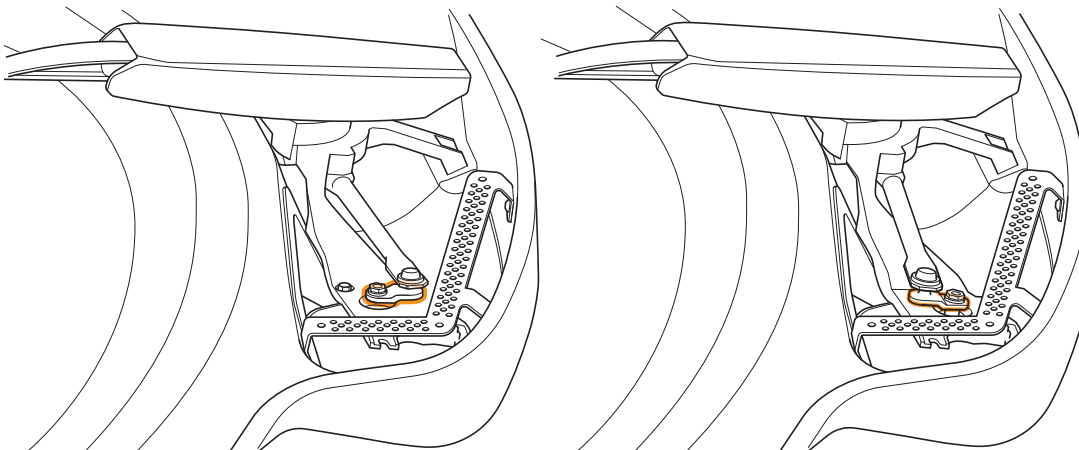
2. Put masking tape on sensitive areas to prevent damage to the surface.
3. Remove 6x T25 bolts **A** from the dashboard wiper lid **B**.



4. Remove the dashboard wiper lid.
5. Record the position of the motor crank to help you when you install the new crank.

Note

See the difference between the location of the motor crank for RHD and LHD vehicles shown below.



RHD and LHD vehicle.

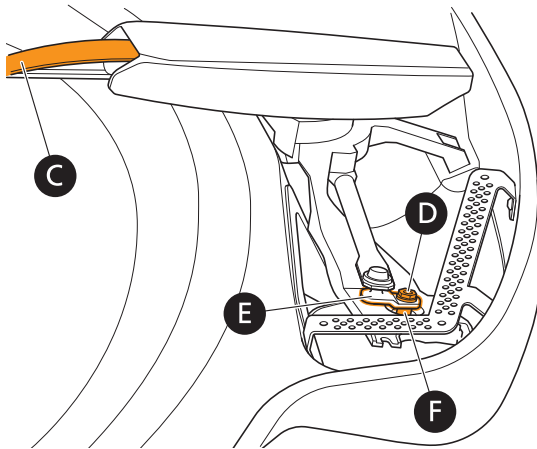
6. Remove the motor crank:
 - 6.1 Hold the carbon sword **C** with one hand and loosen the 13 mm nut **D** on the motor crank **E**.

Note

The nut must still be tightened sufficiently to hold the motor crank to the motor

F.





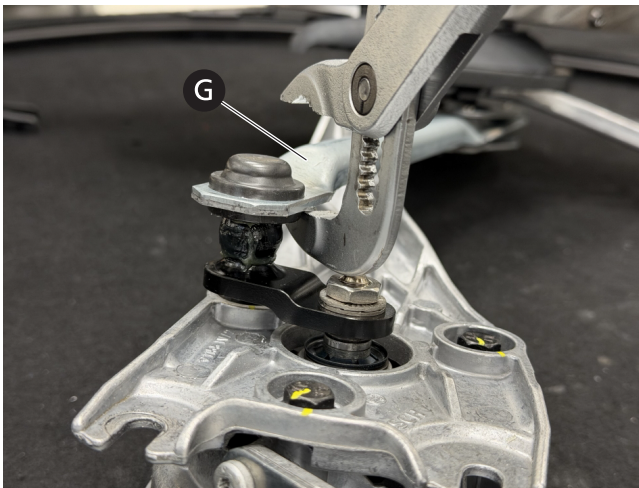
The illustration shows the LHD vehicle.



CAUTION

Be careful not to scratch or damage the rod or the crank.

6.2 Use pliers to remove the wiper rod **G** from the motor crank.



6.3 Remove and discard the nut and the washer from the motor crank.

6.4 Remove and discard the motor crank from the wiper motor.

6.5 Clean the threads and the splines of the wiper motor.

Tool: Cloth

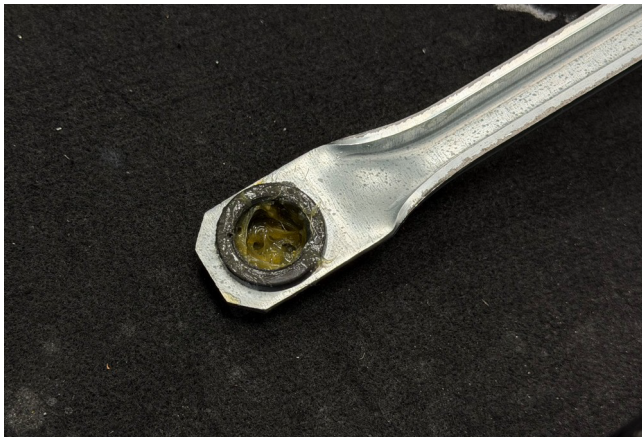
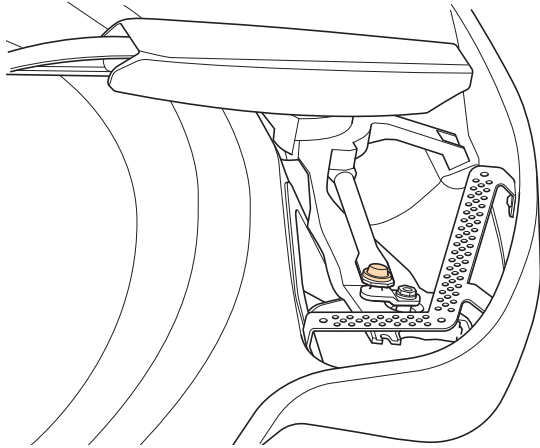
Consumable: Brake cleaner

Install the New Motor Crank

1. Apply grease to the inside of the wiper rod.

Consumable: 130-183-5002





CAUTION

Be careful not to scratch or damage the rod or the crank.



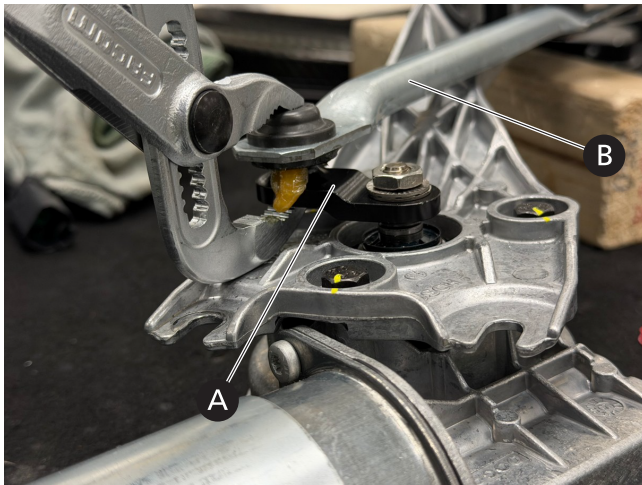
CAUTION

Make sure the rod and the crank are properly connected.

2. Use pliers to install the new motor crank **A** to the wiper rod **B**.

Part: 1093518





The illustration shows the crank already attached to the wiper motor but the crank should not be attached to the wiper motor yet.

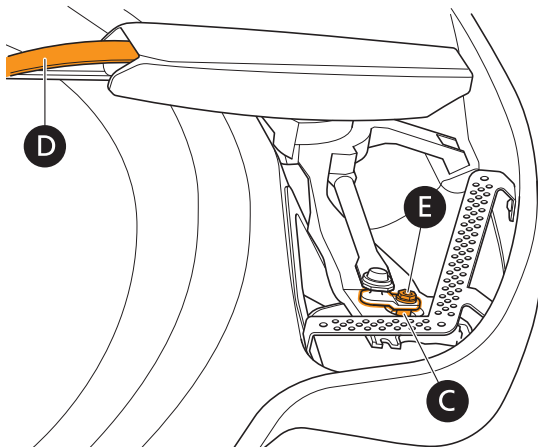
3. Remove excessive grease with cloth or paper.
4. Set the 12 V main switch to **ON**.
5. Start the ignition.
6. Let the wiper arm operate at low speed for a minimum of one complete cycle.
7. Stop the ignition.
8. Set the 12 V main switch to **OFF**.



WARNING

Make sure that you set the 12 V main switch to **OFF**. A movement of the wiper motor can cause injury to a person.

9. Align the wiper arm with the center of the windshield.
10. Attach the new motor crank to the wiper motor **C** in the recorded position.



11. Hold the carbon sword **D** with one hand and install the new 13 mm nut **E** and the new washer to the motor crank.

Parts: 1035526 (nut), 1036320 (washer)

Threadlocker: Loctite 243

Torque: 30 Nm

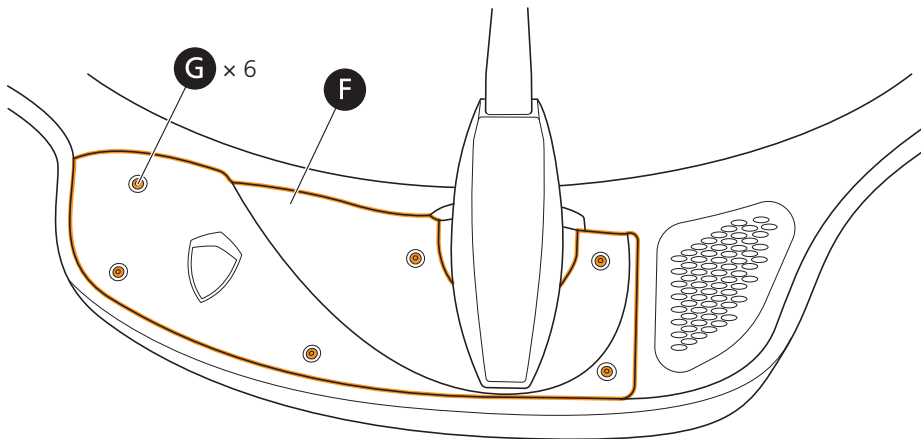
12. Set the 12 V main switch to **ON**.
13. Start the ignition.
14. Do a check of the windshield wiper arm position:





- If the windshield wiper arm is at the center of the windshield, it is in the correct position. Continue to step **16** to complete the installation.
 - If the windshield wiper arm is not at the center of the windshield, continue to step **15** to adjust it.
15. Adjust the wiper:
 - 15.1 Stop the ignition.
 - 15.2 Set the 12 V main switch to **OFF**.
 - 15.3 Remove the 13 mm nut **E** and the washer from the new motor crank **A**. Save the nut for installation. Discard the washer.
 - 15.4 Disengage the new motor crank from the motor **C**.
 - 15.1 Do step **4** thru **14** again.
 16. Stop the ignition.
 17. Set the 12 V main switch to **OFF**.
 18. Remove the protective masking tape.
 19. Install the dashboard wiper lid **F** with 6x T25 bolts **G**.

Torque: 5 Nm



20. Set the 12 V main switch to **ON**.
21. Close the front hood with the key fob or from the center console.

Warranty Information

If the repair is covered by the warranty terms, refer to Koenigsegg Warranty Process.

OPERATION

KWO906606

PART NO

Refer to the invoiced kit number

