



Jesko Door Emblem and Front Hood Shield Update

This instruction refers to other documents that are necessary to do the procedure.

Situation

Jesko door emblems and front hood shield may wear prematurely.

Action

Install new tape under the different parts.

PARTS	REFERENCE	QUANTITY
Jesko Door Sign Tape	1091498	2
Shield Emblem tape	1092170	1*

*Only required if the shield tape is damaged.

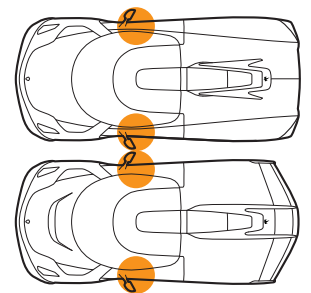
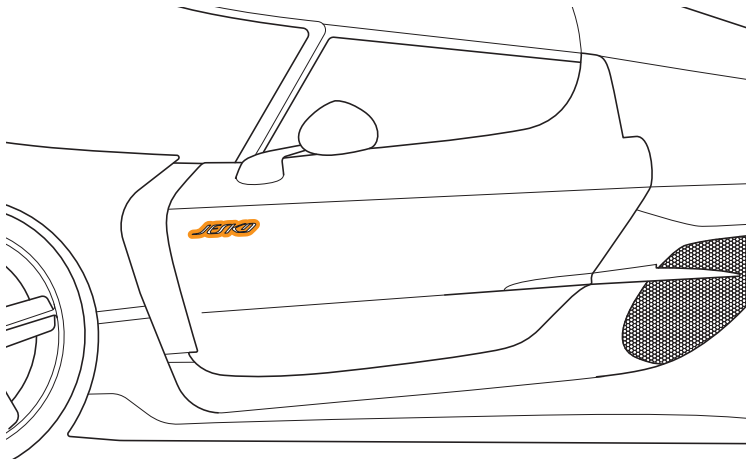
TOOLS	SPECIFICATION	QUANTITY
Fishing line or equivalent	–	–
Jesko Door Emblem Fixture LH	1016372	1
Jesko Door Emblem Fixture RH	1016373	1
Plastic container	–	–
Plastic pry tool	–	–
Scrub sponge	–	–

CONSUMABLES	REFERENCE	QUANTITY
Isopropanol, 99%	–	–

Door Emblem

This instruction is applicable to the RH and LH side. The illustrations show the LH side.

1. Put tape around the door emblem.



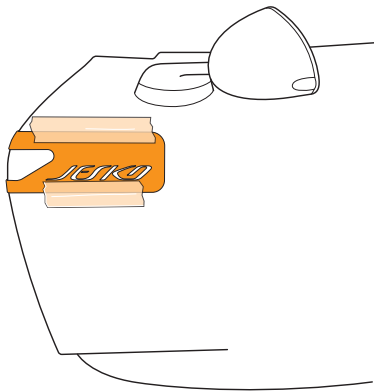


CAUTION

Do not use sharp or hard tools to remove the emblem. This can cause scratches or other damages.

2. Use a fishing line or equivalent to carefully remove the door emblem from the door.
3. Remove and discard the double-sided tape from the bottom of the door emblem.
4. Make a 50/50 mixture of isopropanol and water in a clean container.
5. Use the prepared mixture to remove the glue from the contact surface on the emblem and the door.
6. Use a scrub sponge to make the back of the door emblem rough.
7. Use the prepared mixture to clean the dust from the back of the door emblem.
8. Open the doors with the key fob or with the door button.
9. Align the template with the door and attach it with masking tape.

Tool: 1016372 (LH), 1016373 (RH)



CAUTION

Make sure that there is no contamination on the contact surface of the door emblem. If the door emblem has contamination, the tape will not bond correctly.



CAUTION

Make sure that the double-sided tape is on the emblem letters and does not extend outside of the letter shape. If the tape is outside of the letter shape, the emblem will not bond correctly. The emblem can come off easily.

10. Put double-sided tape on the contact surface on the back of the door emblem.

Part: 1091498



11. Use the template to correctly attach the door emblem.
12. Apply pressure along all the emblem letters to make sure that all of the tape surfaces are attached to the door.
13. Remove the masking tape together with the template.





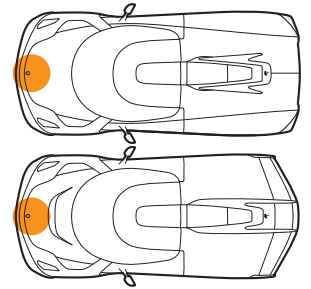
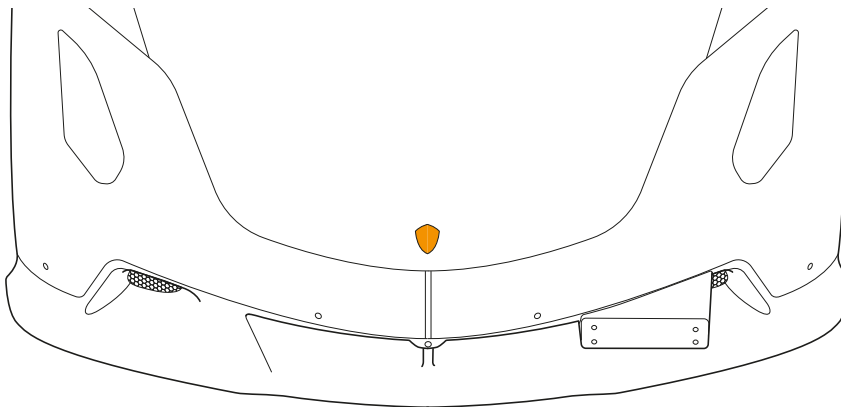
Shield Emblem



CAUTION

Do not apply too much force. Too much force can damage the tape bond.

1. Examine the shield emblem to make sure that it is attached correctly.
 - 1.1 Use a pry tool on four corners of the shield emblem and apply a light force.
 - 1.2 Do a check on the bond of the shield emblem.
 - If the shield emblem does not lift and shows no separation, do not continue with the procedure that follows.
 - If the shield emblem lifts and shows separation, continue with this procedure.
2. Put masking tape around the shield emblem on the front hood.



CAUTION

Do not use sharp or hard tools to remove the emblem. This can scratches or other damages.

3. Use a fishing line or equivalent to remove the shield emblem from the front hood.
4. Remove and discard the double-sided tape from the bottom of the shield emblem.
5. Make a 50/50 mixture of isopropanol and water in a clean container.
6. Use the prepared mixture to remove the glue from the contact surface on the shield and the front hood.
7. Use a scrub sponge to make the back of the shield emblem rough.
8. Use the prepared mixture to clean the dust from the back of the shield emblem.





CAUTION

Make sure that there is no contamination on the contact surface of the shield emblem. If the shield emblem has contamination, the tape will not bond correctly.

- Put double-sided tape on the contact surface on the back of the shield emblem.

Part: 1092170



- Attach the shield emblem to the recess in the front hood. Make sure that the distance from the emblem to the edge of the recess is the same along the full length.
- Push the shield emblem onto the front hood until it is attached along its full length.
- Remove the masking tape.

Warranty Information

If the repair is covered by the warranty terms, refer to Koenigsegg Warranty Process.

OPERATION
KWO883607

PART NO
Refer to the invoiced kit number.

